

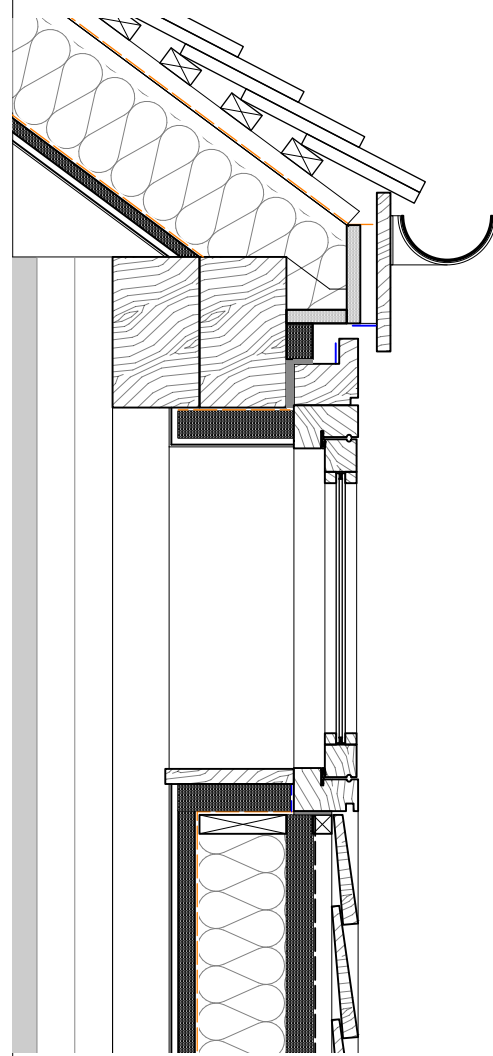
PLAN

Annex Windows W0.12, W0.13, W0.14, & W0.15

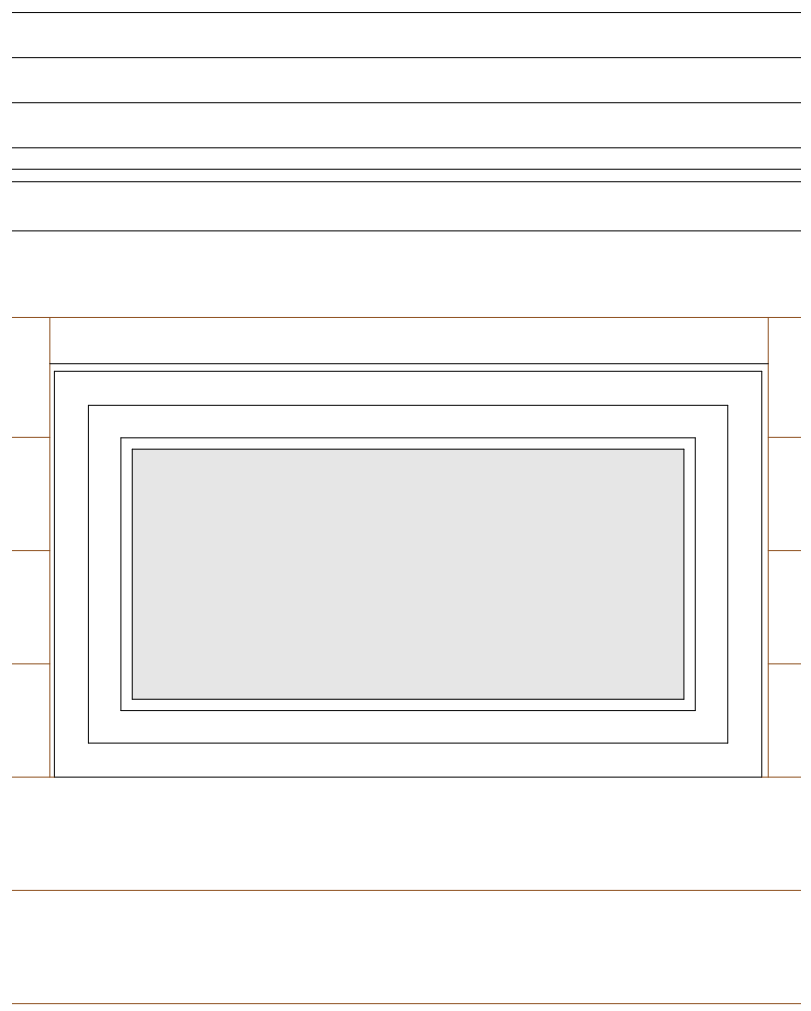
new flush outward opening top hung casement windows:

Door and liner all from oak.
finish: low sheen varnish.

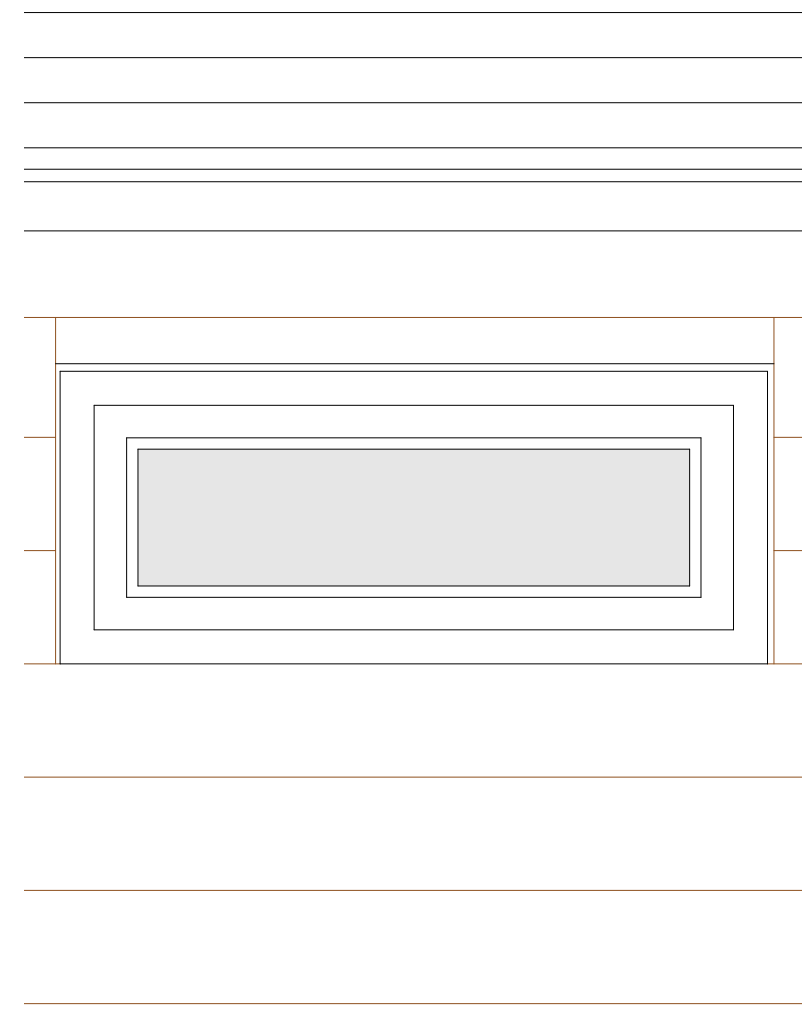
Glazing:
12mm slim heritage double glazing consisting of 4mm low iron glass with low emissivity coating to inner pane.
Black warm edge spacer bar



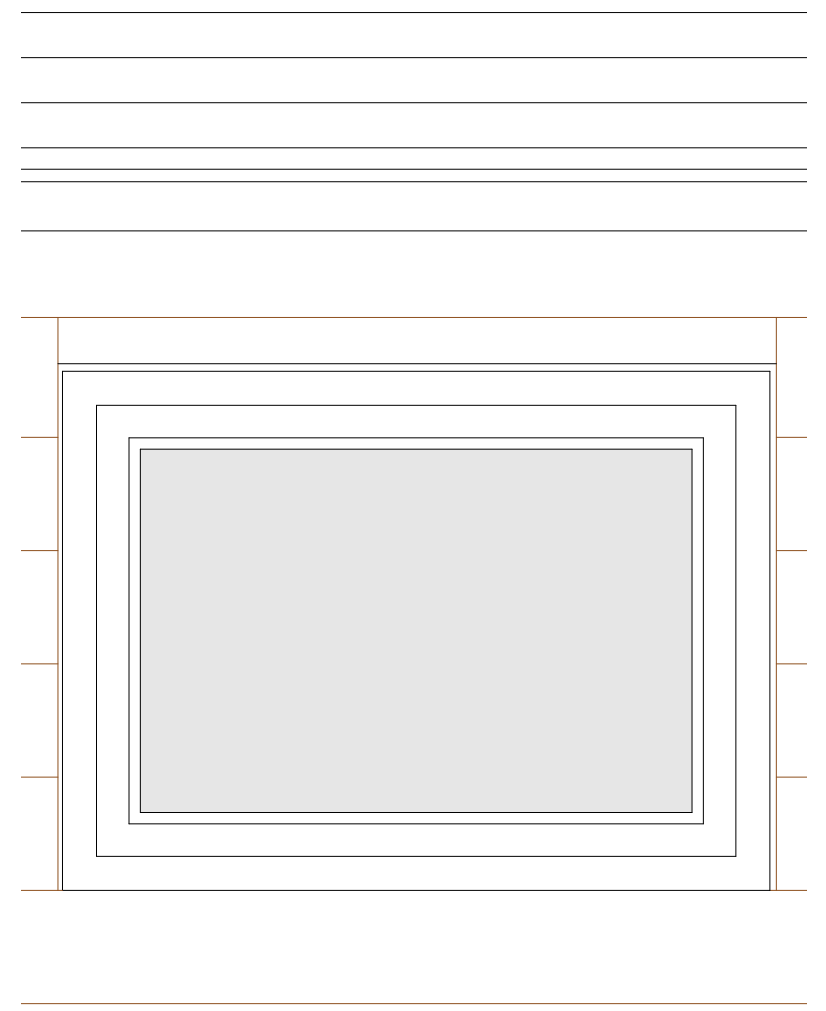
SECTION



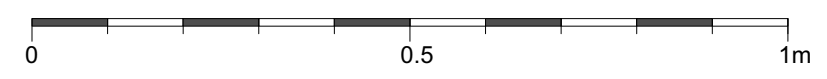
ELEVATION W0.12 & W0.14



ELEVATION W0.13



ELEVATION W0.15



TO BE READ IN CONJUNCTION WITH:
- DRAWING "2212_ASH COTTAGES WINDOW & DOOR REFERENCES"
- DRAWING "2212_1214 ELEVATIONS PROPOSED ANNEX"

Project Address
1-3 Ash Cottages
Albury Road
Little Hadham SG11 2DQ

Drawing Title
3/23/0424/LBC Condition 3
DETAIL: Barn/ Annex
Windows

Drawing No.:	2212_2511	Revision:	
Scale@A1:	5	Scale@A3:	10
Rev. Date:		Rev. Date:	
Drawn by:	RP	Date:	17/10/2023
Status:		Status:	DoC

Pardon
Chambers
Architects