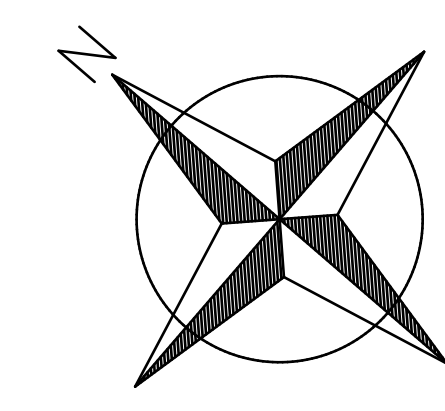
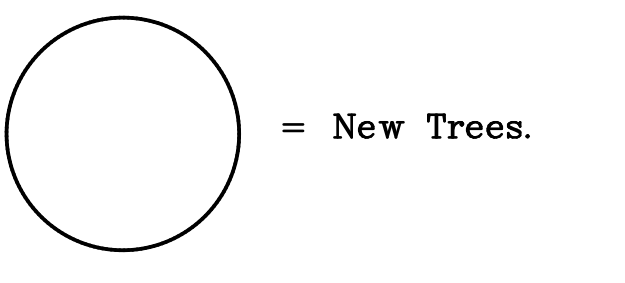
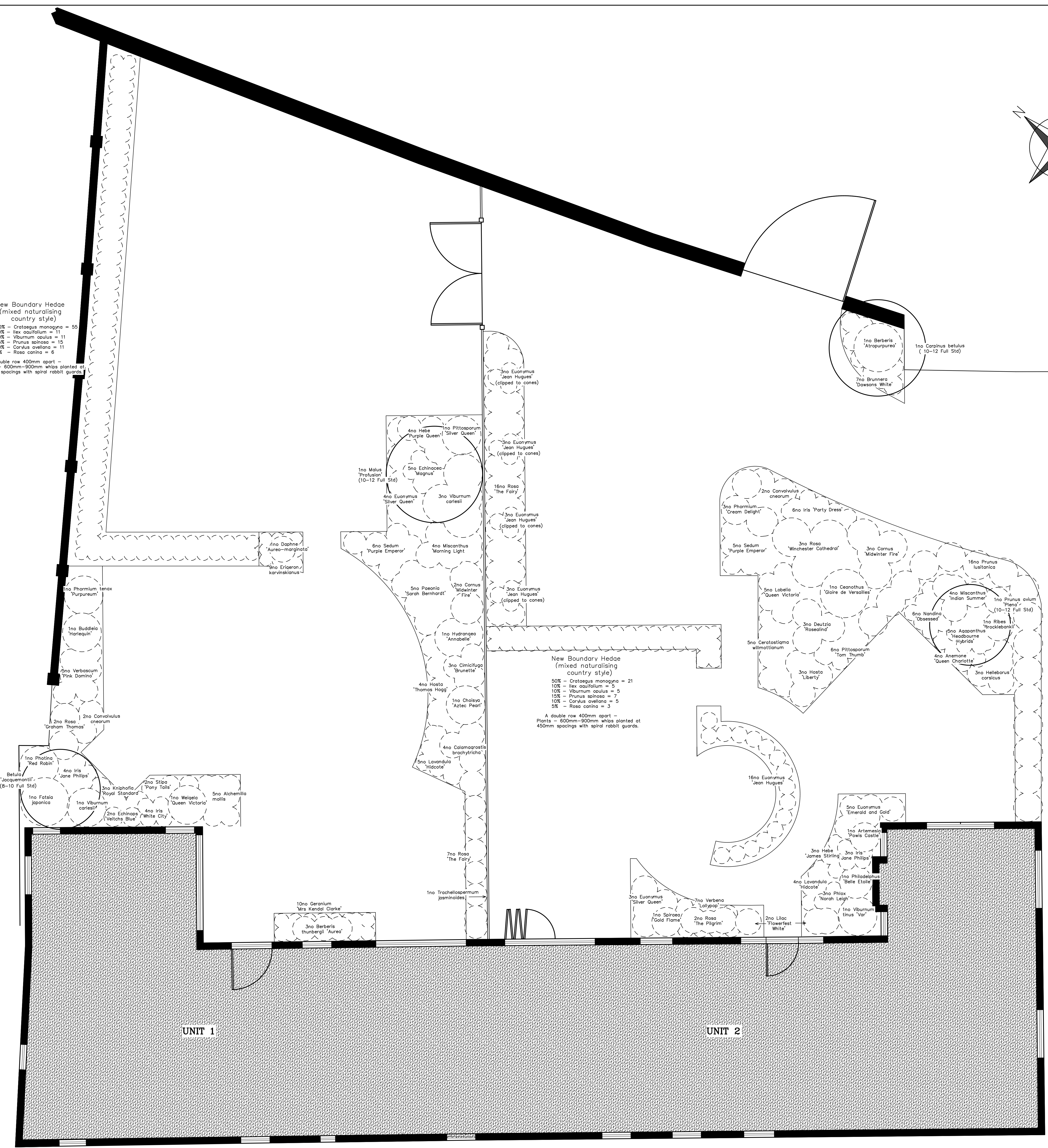


Notes  
All dimensions must be checked on site and not scaled from this drawing.



New Boundary Hedge  
(mixed naturalising  
country style)  
50% - *Crataegus monogyna* = 55  
10% - *Ilex aquifolium* = 11  
10% - *Viburnum coccineum* = 11  
10% - *Prunus spinosa* = 15  
10% - *Carus ovata* = 11  
5% - *Rosa canina* = 6  
A double row 400mm apart -  
Plants = 600mm-800mm whips planted at  
450mm spacings with spiral rabbit guards.

New Boundary Hedge  
(mixed naturalising  
country style)  
50% - *Crataegus monogyna* = 21  
10% - *Ilex aquifolium* = 5  
10% - *Viburnum coccineum* = 5  
10% - *Prunus spinosa* = 7  
10% - *Carus ovata* = 5  
5% - *Rosa canina* = 3  
A double row 400mm apart -  
Plants = 600mm-800mm whips planted at  
450mm spacings with spiral rabbit guards.



This detail is to be read in conjunction with  
Dwg No - 1146.M.23 Rev A



Date	Revisions
15.11.23	Notes added

copyright  
Kevin Murphy, Dip LC, MSGD,  
GARDEN DESIGNER AND CONSULTANT  
Longmead,  
Orchard Way,  
Fontwell,  
Nr Arundel,  
West Sussex, BN18 0SH.  
TEL/FAX - (01243) 814644.  
www.kevinmurphy.co.uk

Client  
St Edmunds Developments  
Job Title  
Proposed Developments at  
Lockner Farm,  
Dorking Road,  
Chilworth,  
Guildford, Surrey.

Drawing Title  
Planting Detail.

Scale 1:50 -- If Printed at A0.  
0m 1 2 3 4m  
Date 17.11.23. Drawn by K.M.

Dwg No 1147.M.23. Rev.