

PROPOSED

DRAINAGE

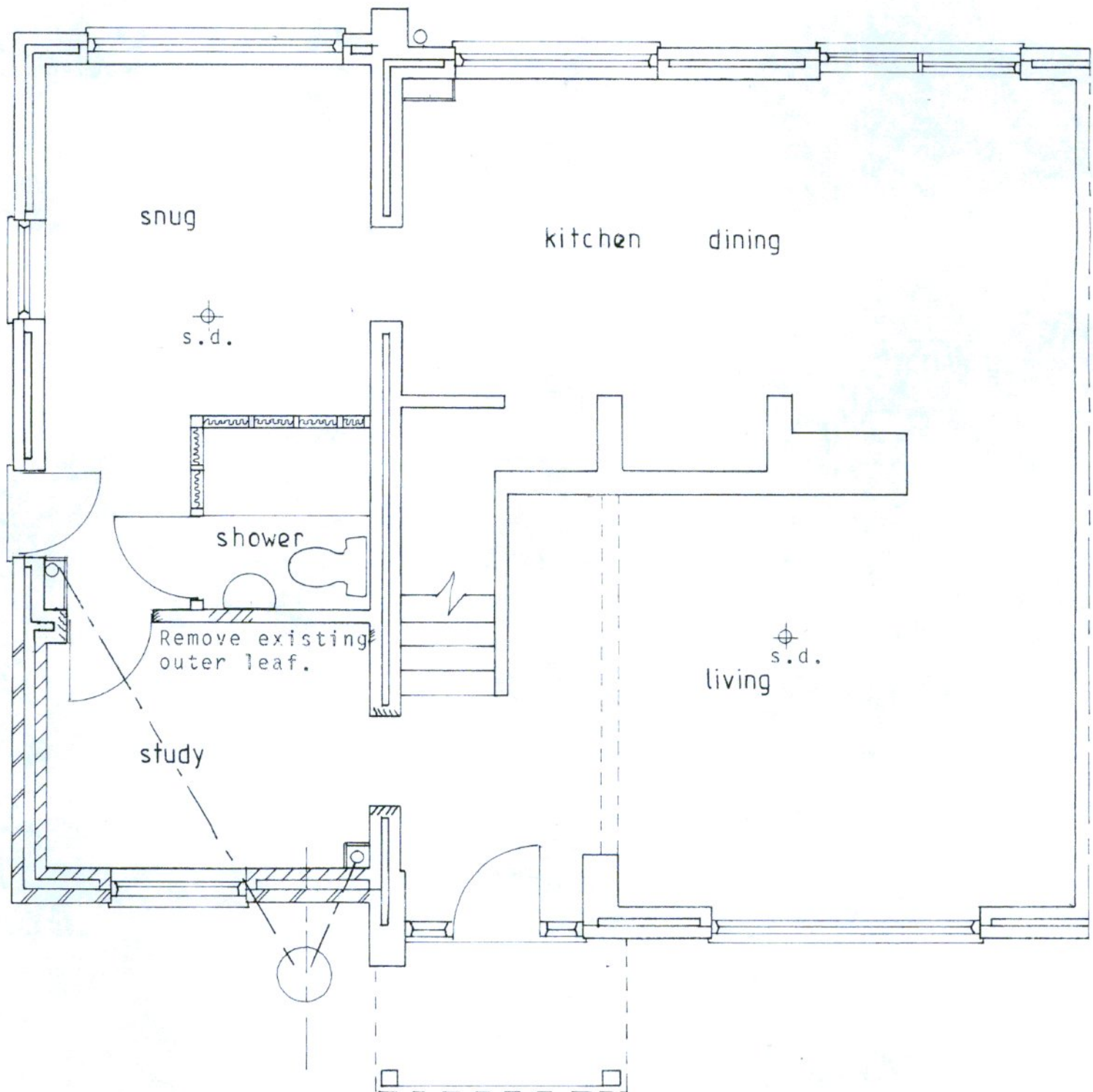
Replace & reposition existing i.c. with 450 dia. plastic max. 1000 deep. Reconnect existing drain & new connections from s.& v.p.s. New drains 100 u.p.v.c. laid at min. 1:40 bedded & surrounded with 100 pea gravel. S.& v.p.s to terminate with Durgo valves above basin levels. 40 wastes to showers, 32 to basins all with 75 deep seal traps. 100 h.r. gutter & 68 downpipes to existing surface water system or soakaways min. 5000 from building.

Install linked, mains operated smoke detection system with battery back-up to BS 5839, with detectors where shown.

Thermostatic valves to new rads.

New light fittings to be energy efficient.

All electrical work required to meet the requirements of Part P (Electrical Safety) must be designed, installed, inspected & tested by a person competent to do so. Prior to issuing a completion certificate the Council must be satisfied that either an electrical installation certificate provided under a Competent Person Scheme has been issued; or an appropriate electrical installation certificate has been issued for the work, & that it has been signed by a person competent to do so.



Ground Floor Plan 1:50

Drg. no. 0989/4

South Gloucestershire Council
Business Support - 6
17 NOV 2023
Received