

Schedule of replacement doors/windows



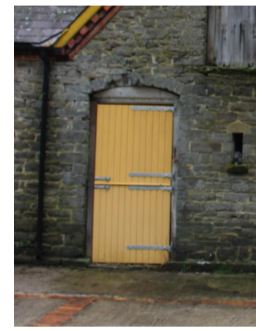
T1: Unauthorised work for removal
Original windows removed in 2017 and replaced with modern painted timber double glazed windows. Cast iron windows reported to be from these openings stored on site.



T1A: Unauthorised work for removal
opening reported to be blocked prior to installation replaced with modern painted timber double glazed windows. It is proposed to remove these windows and replace with cast iron windows to match those removed from openings designated T1.



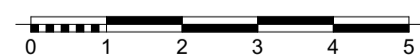
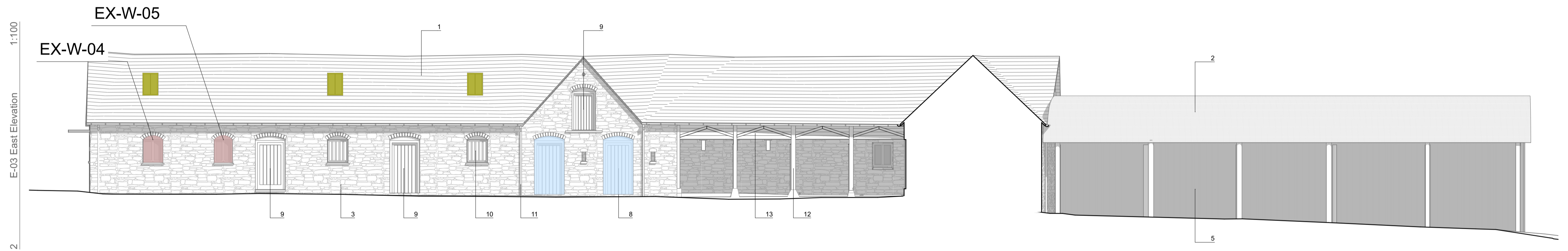
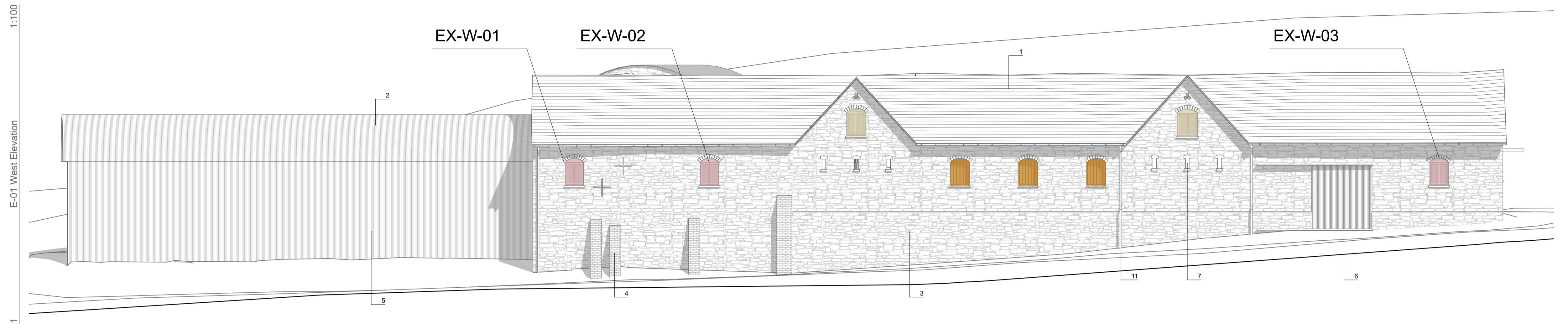
T2: Unauthorised work seeking approval:
Original window removed due to being rotten, replaced with like for like.



T3: Unauthorised work seeking approval:
Original doors removed due to being rotten, replaced with like for like.



T4: Unauthorised work for removal:
Rooflights installed without LBC. Removal proposed with roof slates to match existing reinstated. Modern rafters repaired as required.



Strategy Drawing - Openings to East and West Elevations