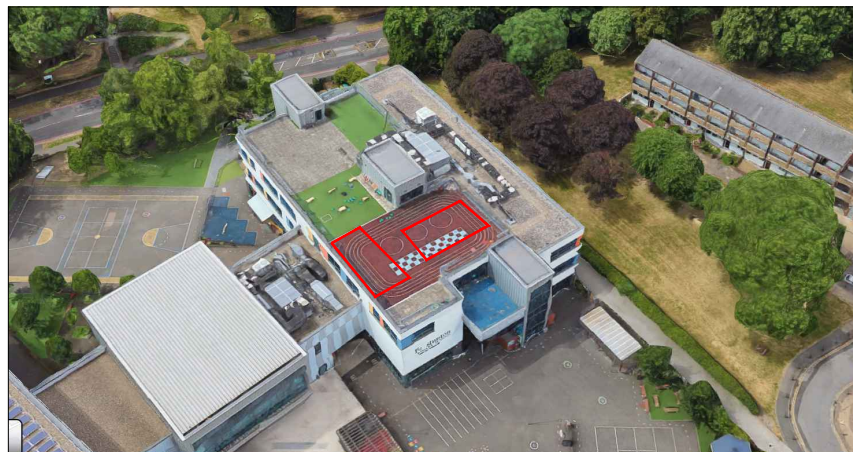


**ASHP Enclosure Layout**  
Scale 1:100



**ASHP Enclosure Location**



THIS DRAWING IS COPYRIGHT OF ALTERNATIVE HEAT LTD.  
THIS DRAWING MAY NOT BE COPIED OR REPRODUCED WITHOUT THE  
CONSENT OF ALTERNATIVE HEAT LTD.  
THIS DRAWING IS FOR USE ON THIS PROJECT ONLY UNLESS  
CONTRACTUALLY OTHERWISE STATED.

**DO NOT SCALE THIS DRAWING** (PRINTED OR ELECTRONIC VERSIONS).  
THIS DRAWING IS FOR SPATIAL CO-ORDINATION PURPOSES ONLY. ALL  
CONTRACTORS ARE RESPONSIBLE FOR SETTING OUT AND MUST CHECK  
ALL LEVELS AND DIMENSIONS PRIOR TO INSTALLATION /  
CONSTRUCTION.

ALL OTHER DESIGN ELEMENTS, WHERE INDICATED, HAVE BEEN  
IMPORTED FOR EXTERNAL CONSULTANTS DRAWINGS AND REFERENCE  
SHOULD BE MADE TO THE INDIVIDUAL CONSULTANT DRAWINGS FOR  
EXACT DIMENSIONS & CO-ORDINATION PRIOR TO ONSITE  
INSTALLATION.

DISCREPANCIES AND/OR AMBIGUITIES WITHIN THIS DRAWING AND  
INFORMATION PROVIDED ELSEWHERE, MUST BE REPORTED  
IMMEDIATELY TO ALTERNATIVE HEAT LTD. FOR CLARIFICATION BEFORE  
PROCEEDING WITH INSTALLATION.

ALL WORKS ARE TO BE CARRIED OUT IN ACCORDANCE WITH THE  
LATEST BRITISH STANDARDS AND CODES OF PRACTICE UNLESS  
SPECIFICALLY DIRECTED OTHERWISE IN THE SPECIFICATION.

**SCHEDULE OF FINISHES**

- ASHP UNITS OUTER CASING - GREY
- GALVANISED ACCESS LADDER
- GALVANISED GANTRY FRAME
- GALVANISED 1100mm HIGH GUARD RAIL
- GREY WHITE 9002 RAL DOUBLE DOORS
- INSULATED WALL PANEL GREY WHITE RAL 9002
- INSULATED ROOF PANEL GREY WHITE RAL 9002

P02	New Location	AMcA	EE	09/08/23
P01	First Issue	AMcA	EE	24/07/23
Rev	Revision Description	Drw	Chk	Date

status:  
**PRELIMINARY**



project title:  
LAMBETH PSDS3B

drawing title:  
FENSTANTON SCHOOL ASHP  
ENCLOSURE LAYOUT

drawing no: CN2302-ALT-FEN-XX-DR-Z-1009  
Rev: P02

date: 09/08/2023 scale: 1:100

drawn by: AMcA checked by: EE



Head Office: Unit 18 - 19 Scarva Road Industrial Estate,  
Scarva Road, Banbridge, Co. Down, BT32 3QD  
Tel: +44 (0) 28 437 70700 Fax: +44 (0) 28 437 78404

info@alternativeheat.co.uk | www.alternativeheat.co.uk

