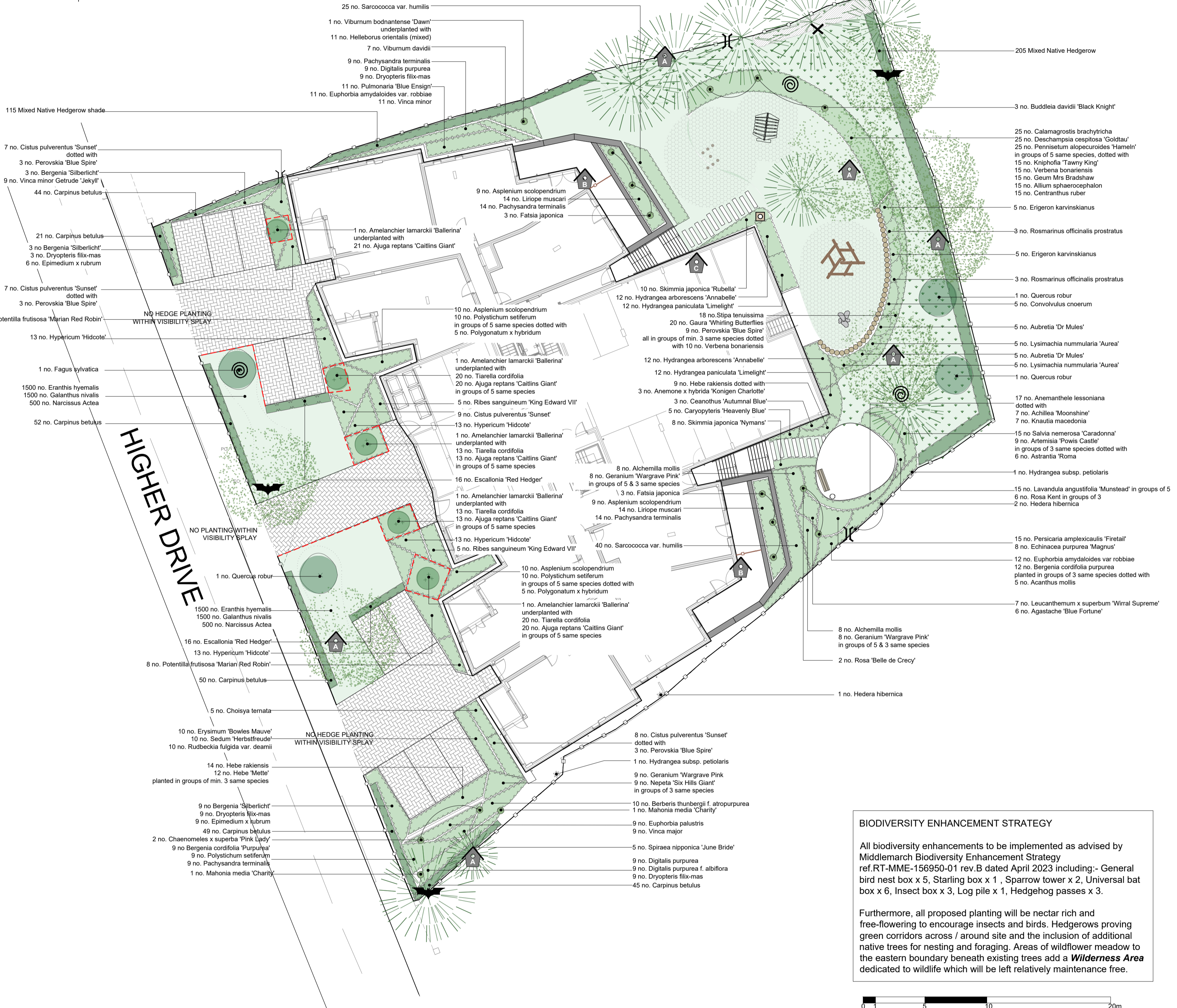
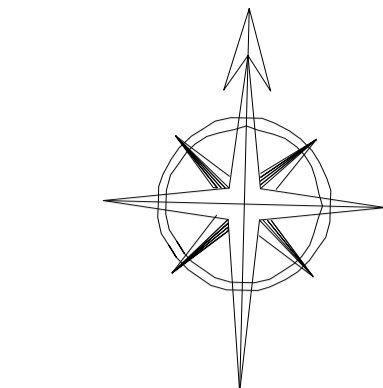


PLANTING SCHEDULE					
CLASS	QTY	SPECIES	SIZE & SPECIFICATION	ROOT	DENSITY / NOTES
Trees	5	Amelanchier lamarckii 'Ballarina'	250-300cm multistem, umbrella form, min 3 stems	RB	Each secured with underground guys and fitted RootRain irrigation available from www.greenblue.com
	1	Fagus sylvatica	Extra heavy standard 18-20cm girth, 3x, 400-450cm height, min 200cm clearstem	RB	
	3	Quercus robur	Extra heavy standard 18-20cm girth, 3x, 400-450cm height, min 200cm clearstem	RB	
Mixed native hedgerow	32	Acer campestre	60-80cm ht, Transplant 1+1, bushy	BR	5 per Lm, planted in double-staggered rows in groups of >3 same species. Fitted with spiral guards if rabbits present
	64	Cornus sanguinea	40-60cm ht, Transplant 1+1, bushy	BR	
	64	Corylus avellana	60-80cm ht, Transplant 1+1, bushy	BR	
	96	Crataegus monogyna	60-80cm ht, Transplant 1+1, bushy	BR	
	32	Ilex aquifolium	Leader with laterals	2L	
32	Ligustrum vulgare	60-80cm ht, Transplant 1+1, bushy	BR		
Single species hedging	261	Carpinus betulus	80-100cm ht, Transplant 1+2, bushy	BR	5 per Lm in dbl-staggered rows
	32	Escallonia 'Red Hedger'	40-60cm ht, branched min 4 breaks	5L	3 per Lm
Grasses & Ferns	17	Anemathelle lessoniana	Full pot, fully rooted, healthy crown	3L	5 per m2
	38	Asplenium scolopendrium	Full pot, fully rooted, healthy crown	3L	5 per m2
	25	Calamagrostis brachytricha	Full pot, fully rooted, healthy crown	3L	5 per m2
	25	Deschampsia cespitosa	Full pot, fully rooted, healthy crown	3L	5 per m2
	30	Dryopteris filix-mas	Full pot, fully rooted, healthy crown	3L	5 per m2
	28	Liriope muscari	Full pot, fully rooted, healthy crown	3L	5 per m2
	25	Pennisetum alopecuroides 'Hamlet'	Full pot, fully rooted, healthy crown	3L	5 per m2
	38	Polystichum setiferum	Full pot, fully rooted, healthy crown	3L	5 per m2
18	Stipa tenuissima	Full pot, fully rooted, healthy crown	3L	5 per m2	
Climbers	3	Hedera hibernica	60-80cm ht, several shoots, caned	3L	as shown, trained on stainless steel wires, 1m in length affixed to fence 50cm from GL, then every 50cm to top of fence
	2	Hydrangea subsp. petiolaris	60-80cm ht, several shoots, caned	3L	
Specimen Shrubs	3	Buddleia davidii 'Black Knight'	80-100cm ht, branched min 6 breaks	10L	as shown
	2	Chaenomeles x superba 'Pink Lady'	40-60cm ht, branched min 3 breaks	10L	
	6	Fatsia japonica	60-80cm ht, bushy, min 3 breaks	10L	
	2	Mahonia x media 'Charity'	60-80cm ht, bushy, min 3 breaks	10L	
	2	Rosa 'Belle de Cresp'	40-60cm ht, bushy	4L	
1	Viburnum x bodnantense 'Dawn'	100-120cm, branched min 5 breaks	20L		
Bulbs	3000	Eranthis hyemalis	Topsize		75 per m2
	3000	Galthus nivalis	Topsize		75 per m2
	1000	Narcissus Actaea	Topsize		25 per m2

PLANTING SCHEDULE					
CLASS	QTY	SPECIES	SIZE & SPECIFICATION	ROOT	DENSITY
Shrubs	10	Berberis thunbergii atropurpurea	40-60cm ht, branched, min. 7 breaks	5L	3 per m2
	5	Caryopteris x dianensis 'Heavenly Blue'	40-60cm ht, bushy, min. 4 breaks	5L	3 per m2
	3	Ceanothus 'Autumnal Blue'	60-80cm ht, leader with laterals	5L	2-3 per m2
	5	Choisya ternata	40-60cm ht, bushy, min. 5 breaks	5L	2-3 per m2
	31	Cistus pulcherrimus 'Sunset'	30-40cm ht, bushy, min. 4 breaks	5L	3 per m2
	5	Convulvulus cnoerum	30-40cm ht, bushy, min. 4 breaks	3L	3 per m2
	12	Hebe 'Mette'	60-60cm ht, bushy, min. 6 breaks	5L	3 per m2
	23	Hebe rakiensis	30-35cm dia, bushy, min. 8 breaks	5L	3 per m2
	24	Hydrangea arborescens 'Annabelle'	40-60cm ht, branched, min 5 breaks	5L	2-3 per m2
	24	Hydrangea paniculata 'Limelight'	40-60cm ht, branched, min 5 breaks	5L	2-3 per m2
	52	Hypericum 'Hidcote'	30-40cm ht, bushy, min. 7 breaks	5L	3 per m2
	15	Lavandula angustifolia 'Munstead'	15-20cm dia, bushy, min. 5 breaks	3L	4 per Lm
	46	Pachysandra terminalis	15-20cm diameter, full pot	2L	3-4 per m2
	18	Perovskia atriplicifolia 'Blue Spire'	40-60cm ht, bushy, min. 4 breaks	5L	dot plants
	16	Potentilla fruticosa 'Marian Red Robin'	40-60cm ht, branched, min 4 breaks	5L	3 per m2
	10	Ribes sanguineum 'King Edward VII'	60-80cm ht, branched, min 3 breaks	5L	2-3 per m2
	6	Rosa 'Kent'	30-40cm ht, branched min 3 breaks	3L	3 per m2
	6	Rosmarinus officinalis prostratus	20-30cm dia, bushy, min 4 breaks	3L	3 per m2
	8	Skimmia japonica 'Nymans'	40-60cm dia, bushy, min. 4 breaks	5L	3 per m2
	10	Skimmia japonica Rubella	40-60cm dia, bushy, min. 4 breaks	5L	3 per m2
5	Spiraea nipponica 'June Bride'	40-60cm dia, bushy, min. 6 breaks	5L	3 per m2	
65	Sarcococca var. humilis	30-40cm ht, bushy, min. 7 breaks	5L	3 per m2	
7	Viburnum davidii	30-40cm dia, bushy, min. 5 breaks	5L	3 per m2	
Herbaceous Perennials	5	Acanthus mollis	Full pot, fully rooted, healthy crown	2L	dot plants
	7	Achillea 'Moonshine'	Full pot, fully rooted, healthy crown	2L	dot plants
	6	Agastache 'Blue Fortune'	Full pot, fully rooted, healthy crown	2L	5 per m2
	87	Ajuga reptans 'Caitlins Giant'	Full pot, fully rooted, healthy crown	2L	5 per m2
	16	Alchemilla mollis	Full pot, fully rooted, healthy crown	2L	5 per m2
	15	Allium sphaerocephalon	Full pot, fully rooted, healthy crown	2L	dot plants
	3	Anemone x hybrida 'Konigin Charlotte'	Full pot, fully rooted, healthy crown	2L	5 per m2
	9	Artemisia 'Powis Castle'	Full pot, fully rooted, healthy crown	2L	5 per m2
	6	Astrantia 'Roma'	Full pot, fully rooted, healthy crown	2L	5 per m2
	10	Aubretia 'Dr Mules'	Full pot, fully rooted, healthy crown	2L	5 per m2
	21	Bergenia cordifolia purpurea	Full pot, fully rooted, healthy crown	2L	5 per m2
	15	Bergenia 'Silberlicht'	Full pot, fully rooted, healthy crown	2L	5 per m2
	15	Centranthus ruber	Full pot, fully rooted, healthy crown	2L	dot plants
	18	Digitalis purpurea	Full pot, fully rooted, healthy crown	2L	dot plants
	9	Digitalis purpurea f. alba	Full pot, fully rooted, healthy crown	2L	dot plants
8	Echinacea purpurea 'Magnus'	Full pot, fully rooted, healthy crown	2L	5 per m2	
15	Epimedium x rubrum	Full pot, fully rooted, healthy crown	2L	5 per m2	
10	Erigeron karvinskianus	Full pot, fully rooted, healthy crown	2L	5 per m2	
10	Erysimum 'Bowles Mauve'	Full pot, fully rooted, healthy crown	2L	5 per m2	
23	Euphorbia amygdaloides var. robbiae	Full pot, fully rooted, healthy crown	2L	5 per m2	
9	Euphorbia palustris	Full pot, fully rooted, healthy crown	2L	5 per m2	
20	Gaura lindheimeri 'Whirling Butterflies'	Full pot, fully rooted, healthy crown	2L	5 per m2	
25	Geranium 'Wargrave Pink'	Full pot, fully rooted, healthy crown	2L	5 per m2	
15	Geum 'Mrs Bradshaw'	Full pot, fully rooted, healthy crown	2L	dot plants	
11	Helleborus hybridus - mixed	Full pot, fully rooted, healthy crown	2L	5 per m2	
7	Knautia macedonia	Full pot, fully rooted, healthy crown	2L	5 per m2	
15	Kniphofia 'Tawny King'	Full pot, fully rooted, healthy crown	2L	dot plants	
7	Leucanthemum x superbum 'Wirral Supreme'	Full pot, fully rooted, healthy crown	2L	5 per m2	
10	Lysimachia nummularia 'Aurea'	Full pot, fully rooted, healthy crown	2L	5 per m2	
9	Nepeta 'Six Hills Giant'	Full pot, fully rooted, healthy crown	2L	5 per m2	
15	Persicaria amplexicaulis 'Firetail'	Full pot, fully rooted, healthy crown	2L	5 per m2	
10	Polygonatum x hybridum	Full pot, fully rooted, healthy crown	2L	5 per m2	
11	Pulmonaria 'Blue Ensign'	Full pot, fully rooted, healthy crown	2L	dot plants	
10	Rudbeckia var. fulgida deamii	Full pot, fully rooted, healthy crown	2L	5 per m2	
15	Salvia nemerosa 'Caradonna'	Full pot, fully rooted, healthy crown	2L	5 per m2	
10	Sedum 'Herbstfreude'	Full pot, fully rooted, healthy crown	2L	5 per m2	
66	Tiarella cordifolia	Full pot, fully rooted, healthy crown	2L	5 per m2	
25	Verbena bonariensis	Full pot, fully rooted, healthy crown	2L	dot plants	
9	Vinca major	Full pot, fully rooted, healthy crown	2L	5 per m2	
11	Vinca minor	Full pot, fully rooted, healthy crown	2L	5 per m2	
9	Vinca minor 'Gertrude Jekyll'	Full pot, fully rooted, healthy crown	2L	5 per m2	
General Notes	All new planting to be top-dressed with a 50mm layer of medium grade bark mulch. All shrubs & seed to be of local (UK) provenance. Use of herbicides to be avoided.				



### KEY

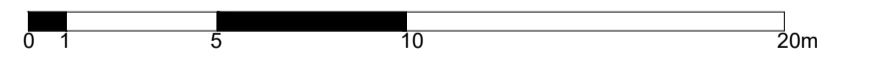
- Amenity lawn - new turf laid to BS3883:2015 on 150mm blended topsoil / compost mix
- Rubber safety matting with hard wearing grass seed eg. Safety Matta ex. www.matta.co.uk
- Wildflower meadow seed - Emorsgate EH1 ex. www.wildseed.co.uk
- Bulbs in lawn - scattered and left to naturalise
- Proposed mixed native hedgerow - see planting schedule for further information
- Proposed shrubs & herbaceous - see planting schedule for further information
- Proposed specimen shrubs - see planting schedule for further information
- Proposed climbers - see planting schedule for further information
- Root barrier - GT Rootbarrier 360 ex. Green-Tech
- Proposed standard trees - see planting schedule for further information
- Proposed multistem trees - see planting schedule for further information
- Bat box - Schwegler 2F Universal Bat Box mounted in 3's. ex. www.nhbs.com
- Bird box A: Single hole nest box - Schwegler 1B ex. www.nhbs.com
- Bird box B: Sparrow Eco Tower ex. www.nhbs.com
- Bird box C: Starling Nest Box ex. www.nestbox.co.uk
- Insect box - National Trust Apex Insect House ex. www.nhbs.com
- Log pile from site won material, varying in length from 100mm - 1000mm of various widths
- Hedgehog pass - a hole 130mm height x 130mm width in the closeboard fencing
- Existing vegetation retained
- Existing broadleaved trees to be retained & protected in accordance with BS5837:2012 & Crown Arborescultural Survey & Report ref: 10121 dated June 2019
- Existing conifers to be retained & protected in accordance with BS5837:2012 & Crown Arborescultural Survey & Report ref: 10121 dated June 2019

All ecological mitigation to be adhered to in accordance with Biodiversity Enhancement Strategy Report No: RT-MME-156950-01 dated April 2022

### BIODIVERSITY ENHANCEMENT STRATEGY

All biodiversity enhancements to be implemented as advised by Middlemarch Biodiversity Enhancement Strategy ref. RT-MME-156950-01 rev.B dated April 2023 including:- General bird nest box x 5, Starling box x 1, Sparrow tower x 2, Universal bat box x 6, Insect box x 3, Log pile x 1, Hedgehog passes x 3.

Furthermore, all proposed planting will be nectar rich and free-flowering to encourage insects and birds. Hedgerows proving green corridors across / around site and the inclusion of additional native trees for nesting and foraging. Areas of wildflower meadow to the eastern boundary beneath existing trees add a **Wilderness Area** dedicated to wildlife which will be left relatively maintenance free.



Refer to the following for further information :-  
 23/0306 rev.B Landscape Masterplan  
 23/0611 Outline Specification & Detail  
 23/0612 rev.A Landscape Management Plan

Site:	59-63 Higher Drive, Purley CR8 2HR		
Drawing Ref.:	23/0610 - rev.A		
Drawing Title:	Planting Plan & Schedule		
Stage:	PLANNING		
Scale:	1 : 200 @ A1 (DO NOT SCALE)		
Date:	19/06/2023		
Client:	Selsdon Construction		
Rev.	Description	Drawn	Date
A	Visibility splay note added	CJD	04/10/23
CHRISTINA ODELL, CHARTERED LANDSCAPE ARCHITECT			
7 St Margarets Terrace, St Leonards-on-Sea, East Sussex TN37 6EN christinaodell@gmail.com 0781 8566522			