

Design & Access Statement and Construction Logistics Plan



Scarcroft Golf
Club

Syke Lane
Leeds
LS14 3BQ

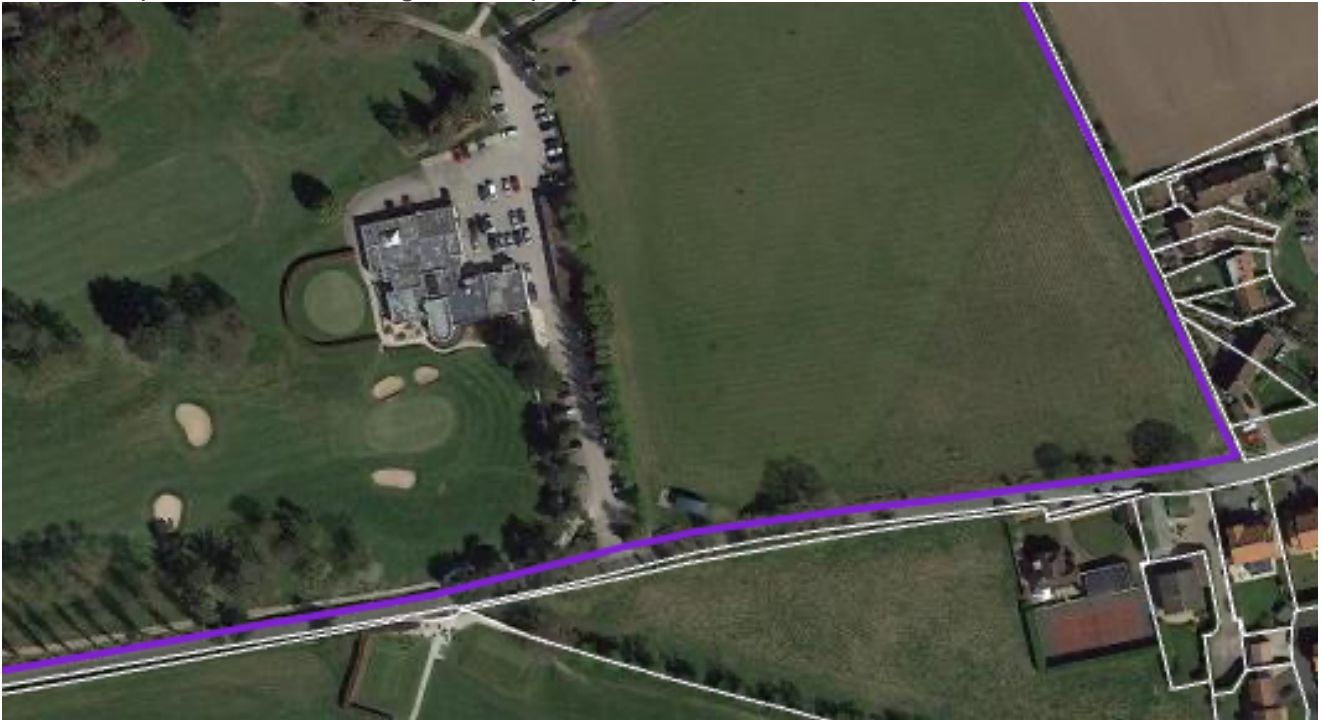
Construction Phase Logistics Plan

Introduction

The project consists of the erection of a golf training studio adjacent to the existing practice area and in land under the ownership of Scarcroft Golf Club. The training studio will be a facility that will be used year round for the training of both new and existing golfers, as well as a simulator for use during inclement weather.

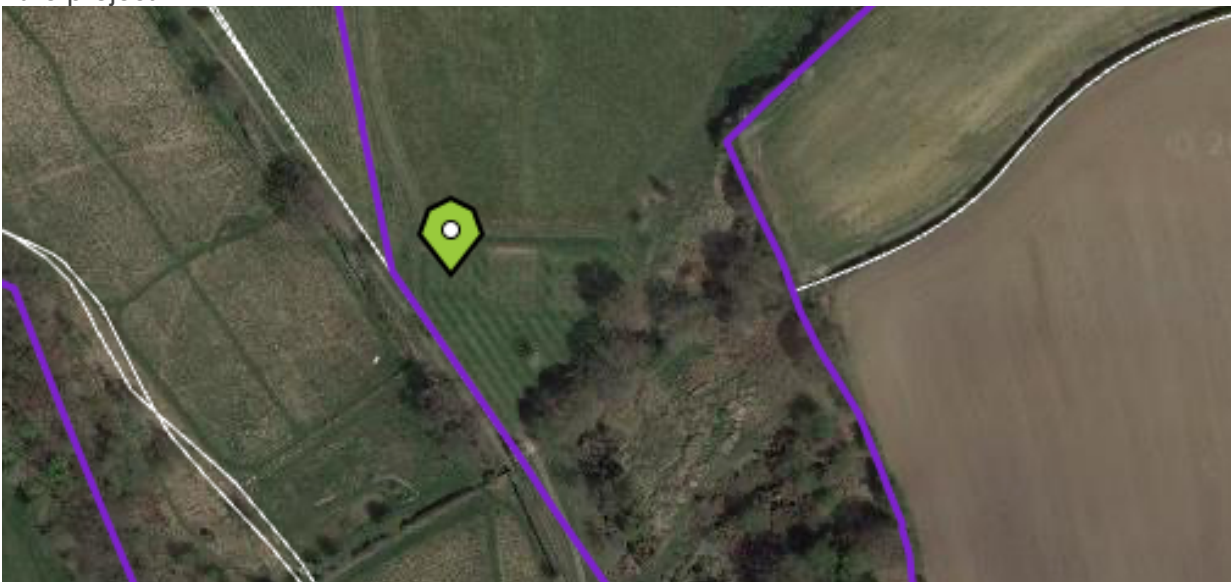
a) Loading and unloading of plant and materials

Construction vehicles will be limited to waste collection and delivery of materials and small plant. All vehicles accessing the site will be directed to existing public access on Syke Lane and a small site compound will be set up adjacent to the golf studio site. A competent Banksman will be provided by the Principal Contractor throughout the project.



b) Storage of plant and materials

Materials and equipment will offloaded and stored in the site compound. Waste will be removed on a wait and load basis. A competent Banksman will be provided by the Principal Contractor throughout the project.



c) Programme of works (including measures for traffic management)
All works will be carried out during standard hours and by trained persons. The build program will be completed within 6 weeks of practical start on site.

Access for deliveries etc is from Syke Lane. There is space adjacent to the compound for vehicles to turn. All reversing and vehicle manoeuvres will be supervised by a competent banksman.

Programme - Week 1 - the site will be set up, including the compound and fencing and welfare facilities
Week 2-6 – Building works commenced and completed

d) Provision of boundary hoarding, behind any visibility zones of construction traffic routing
A small compound will be established immediately adjacent to the building for loading/unloading and storage of materials etc. No hoarding or fencing will obscure any traffic routes.

e) Hours of operation

The site hours of operation will be 8am - 6pm Monday to Friday and 8am to 2pm Saturday.

f) Means to prevent deposition of mud on the highway

Brushes and water will be provided to clean any localised mud/dust, but this is not anticipated to be an issue.

Conclusions

The project team are committed to ensuring that the construction at Scarcroft Golf Club will not give rise to any nuisance, hazards or obstruction on the public highway or harm highway safety.

This document fully demonstrates how the development will be constructed in a careful and considerate manner to fully meet the requirements of Condition 4.

Design Statement

This golf training studio has been designed to maximise potential uses whilst minimizing both height and footprint. The studio is designed to be self sufficient- using only energy generated by the Photo Voltaic Panels installed on the roof. Surplus electricity will be fed back to the main clubhouse and facilities which in turn will lower the golf clubs electricity bills and carbon footprint.



The studio will be installed on concrete foundations and built from lightweight steel and clad in weatherboarding. The roof will be rubber membrane with Photo Voltaic panels surface mounted.

Hours of Operation

The studio is designed as a building which is ancillary to the existing clubhouse and facilities. Use of the studio will be in the existing hours of business of the golf club.