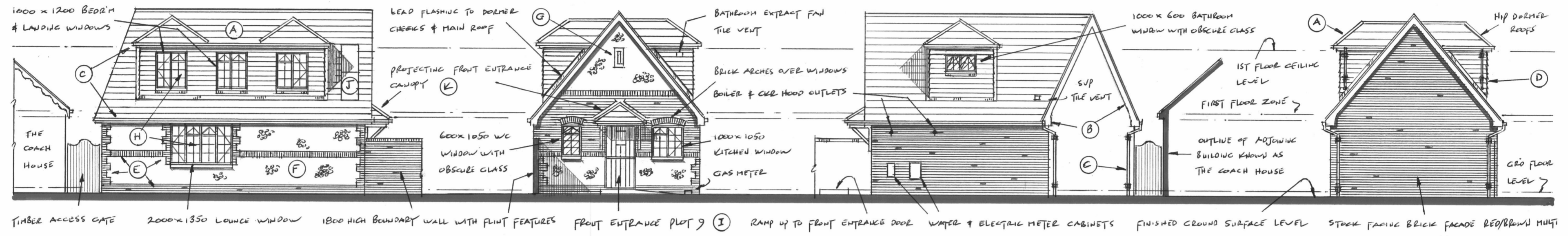
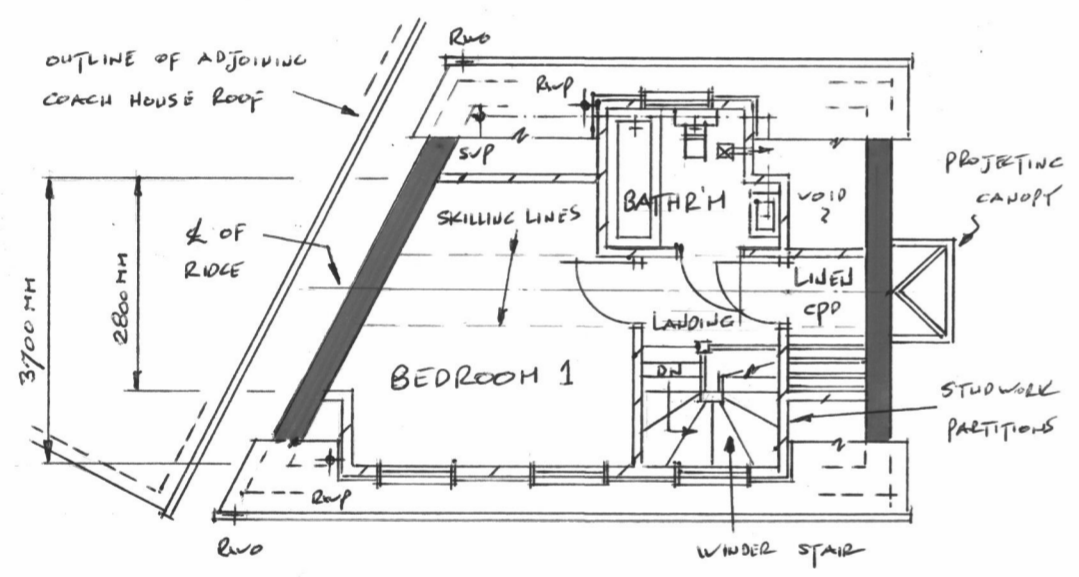


REDEVELOPMENT OF FORMER SADDLERY STORE WITH ASSOCIATED OFFICES & OUTBUILDINGS AT
 SOAKE FARM • SOAKE ROAD • DENMEAD • WATERLOOVILLE • PO7 6JA • PROPOSED 1 BED
 2 PERSON SEMI-BUNGALOW • PLOT 9 • SCALE: 1:100th

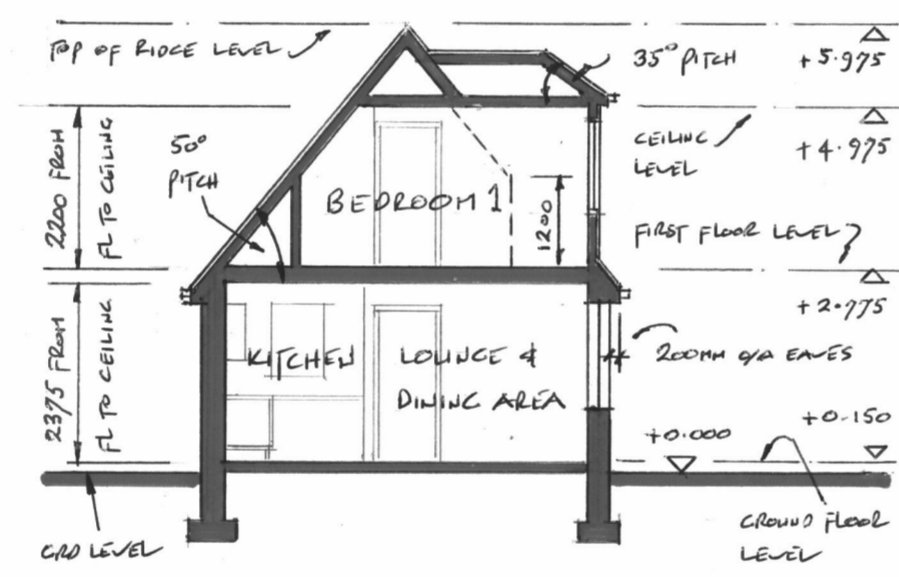


SIDE (SOUTH) & FRONT (EAST) ELEVATIONS

SIDE (NORTH) & REAR (WEST) ELEVATIONS



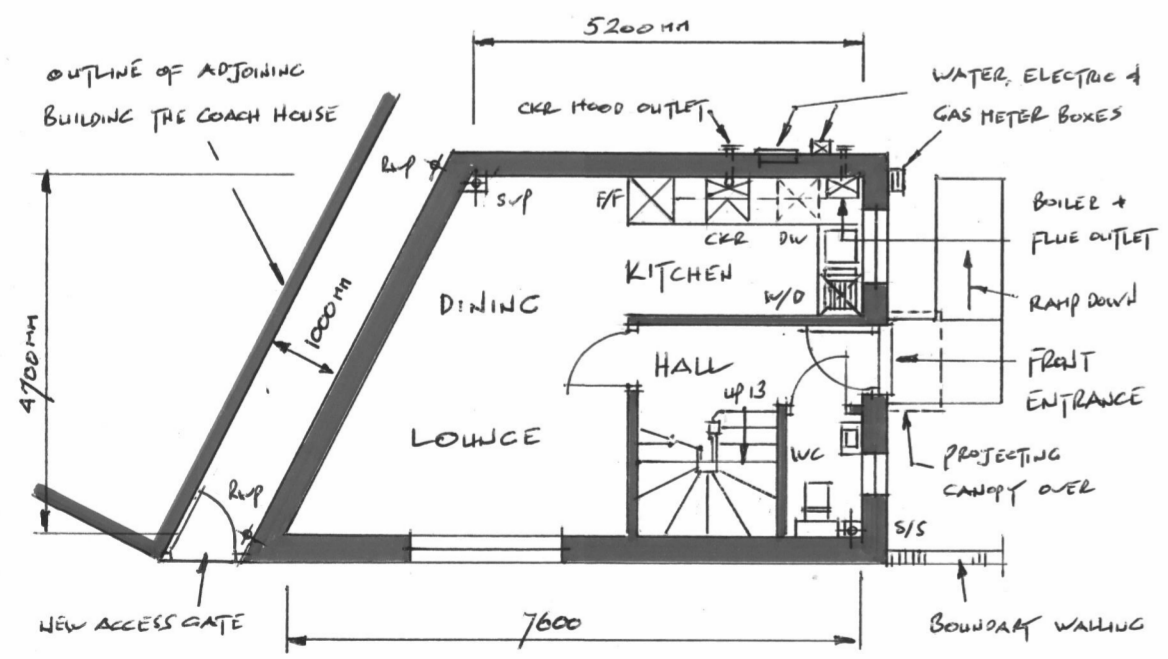
FIRST FLOOR LAYOUT PLAN



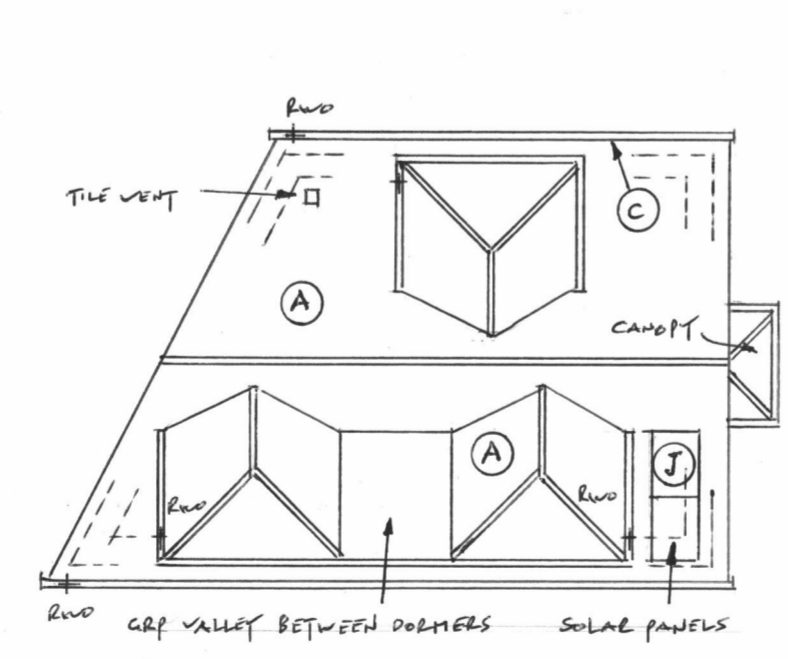
TYPICAL CROSS SECTION

PLOT No 9 : SCHEDULE OF EXTERNAL FINISHES

- A Duo Pitched Main & Hipped Dormer Roofs : Marley (or eq' approved) concrete plain tiles with half round ridges & bonnet hips. Colour - Old English Dark Red
- B Fascias, Bargeboards, Eaves/Verge Soffit Linings : Upvc, Colour - Cream.
- C Half-Round Rainwater Gutters With Down pipes : Upvc, Colour - Black.
- D External Facades : Marley (or eq' approved) concrete plain tiles to Projecting dormer walls & cheeks, Colour - Old English Dark Red
- E External Facades : Stock facing brickwork, Colour - Red/brown multi to :- Main facades, plinth at ground floor level, feature corner and window jamb coirs, arch heads to windows & horizontal bands of soldier coursing. External Facades : Flint brick feature infill panels.
- F External Facades : Reconstituted stone gable end vent.
- H External Double Clear/Obscure Glazed Cottage Style Windows : Upvc : Colour - Cream, with reconstituted stone cills.
- I External Composite Stable Style Front Entrance Door : Colour - Chartwell Green.
- J Solar PV Panels : Surface mounted PV array system to achieve a minimum efficiency in accordance with Winchester City Councils Local plan and joint core Strategy, Colour - Black.
- K Front Entrance Canopy GRP : With roof tiles fascias & rv goods etc to match main building.

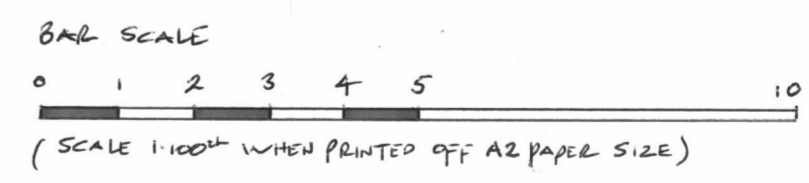


GROUND FLOOR LAYOUT PLAN



ROOF LAYOUT PLAN

ISSUE	DATE	COMMENTS
1	3/7/23	ISSUED FOR PLANNING APPROVAL



DRAWING No SF/PP/102/1