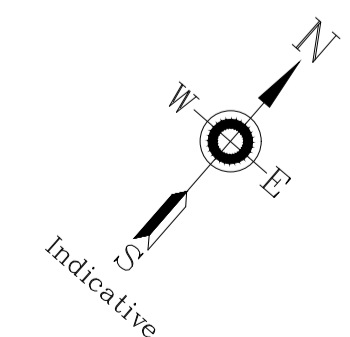
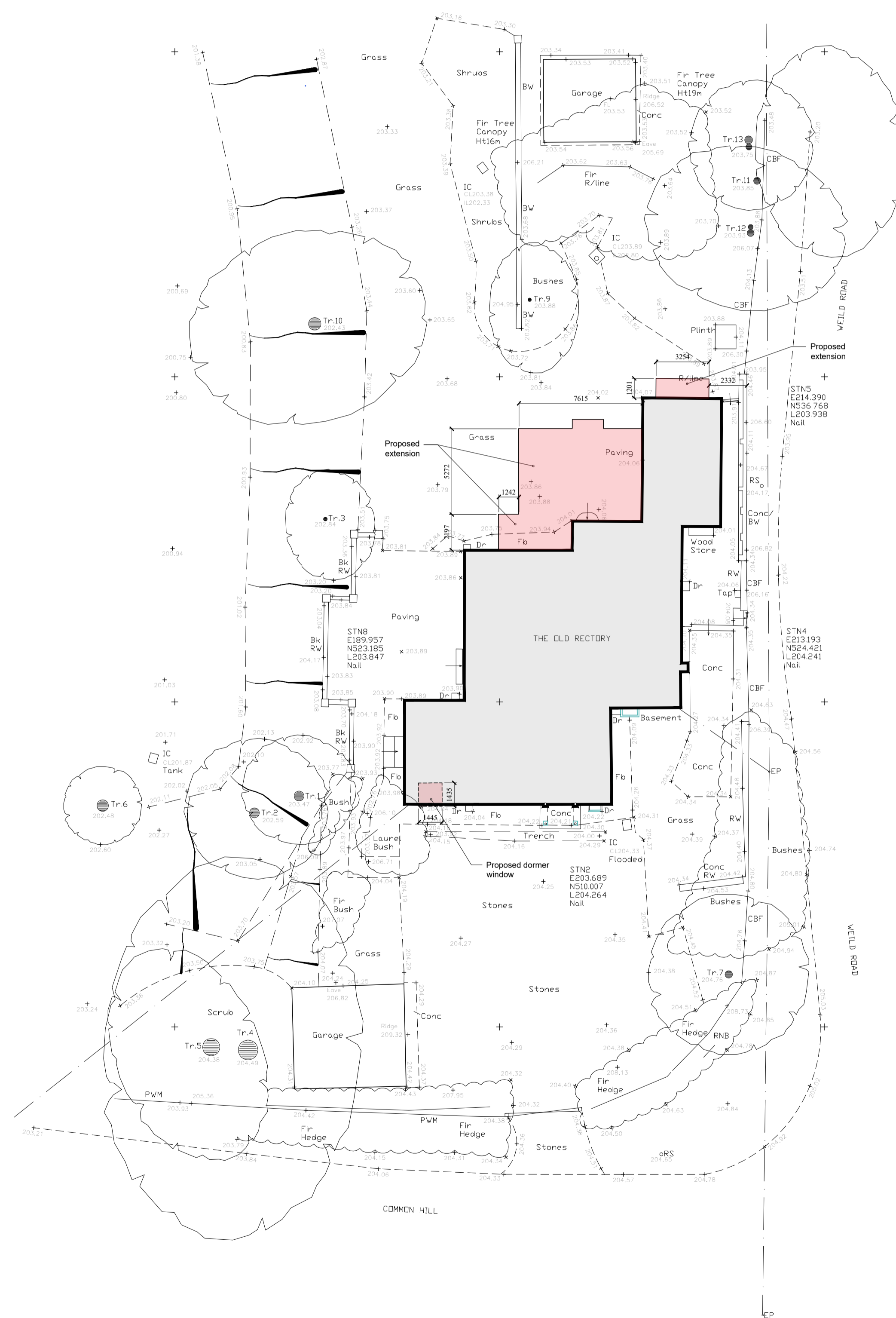


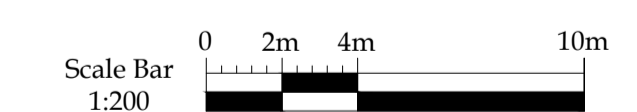
| Tr. No. | Species    | Ø (m)     | Height (m) |
|---------|------------|-----------|------------|
| 1       | Laburnum   | M/b       | 5          |
| 2       | Holly      | M/b       | 8          |
| 3       | Smokebush? | 0.23      | 4.5        |
| 4       | Holly Oak  | M/b       | 18         |
| 5       | Fir        | M/b       | 14         |
| 6       | Yew        | M/b       | 4.5        |
| 7       | Unknown    | M/b       | 4.5        |
| 9       | Magnolia   | 0.21      | 8          |
| 10      | Pine       | 0.76      | 16         |
| 11      | Oak        | 0.42      | 16         |
| 12      | SB         | 0.30/0.42 | 19         |
| 13      | Fir        | 0.48/0.37 | 24         |



**ABBREVIATIONS FOR SITE SURVEYS**

|                              |                                |
|------------------------------|--------------------------------|
| ATM - Traffic Management     | RPW - Rain Water Pipe          |
| BB - Belland                 | SC - Stop Cook                 |
| BL - Belland Beacon          | SL - Sand Level                |
| PL - Pavement Light          | SP - Sign Post                 |
| CATV - Cable TV              | STP - Storm Pipe               |
| CL - Cover Level             | SV - Stop Valve                |
| CPS - Concrete Paving Stones | SW - Storm Water               |
| DC - Drain Kerb              | TAC - Storm Water              |
| Elec - Electricity           | TIC - Telecom Inspection Cover |
| EP - Electricity Pole        | TL - Traffic Light             |
| EP - Joint Joint Pole        | TP - Telegraph Pole            |
| FP - Fire Hydrant            | UTL - Unstable To Lift         |
| FW - Fuel Waster             | VP - Vent Pipe                 |
| G - Gully                    | WM - Water Meter               |
| GM - Gas Meter               | WP - Waste Pipe                |
| GV - Gas Valve               |                                |
| IC - Inspection Cover        |                                |
| IL - Invert Level            | Fences & Walls                 |
| LB - Lamp Post               | BB - Barked Area               |
| LP - Lamp Post               | CB - Close Boarded             |
| MB - Man Hole                | CI - Corrugated Iron           |
| MS - Man Hole                | CL - Chain Link                |
| MP - Marker Post             | CP - Chestnut Paving           |
| MS - Man Hole                | IR - Iron Rolling              |
| NB - Notice Board            | LT - Lattice                   |
| NE - No Further Information  | PC - Post & Chain              |
| P - Post                     | PR - Post & Rail               |
| PB - Post Box                | RV - Retaining Wall            |
| RE - Road Eye                |                                |
| RH - Road Name Board         |                                |
| RS - Road Sign               |                                |
| RSC - Rolled Steel Column    |                                |
| RSJ - Rolled Steel Joist     |                                |

SITE PLAN  
(SCALE 1:100)



PLANNING

| REV | DATE   | DETAILS        |
|-----|--------|----------------|
| P2  | Nov 23 | Planning Stage |
| P1  | Nov 23 | Planning Stage |