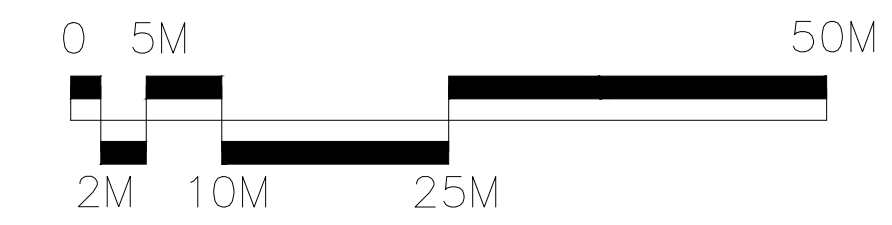


Ryburn Valley High School

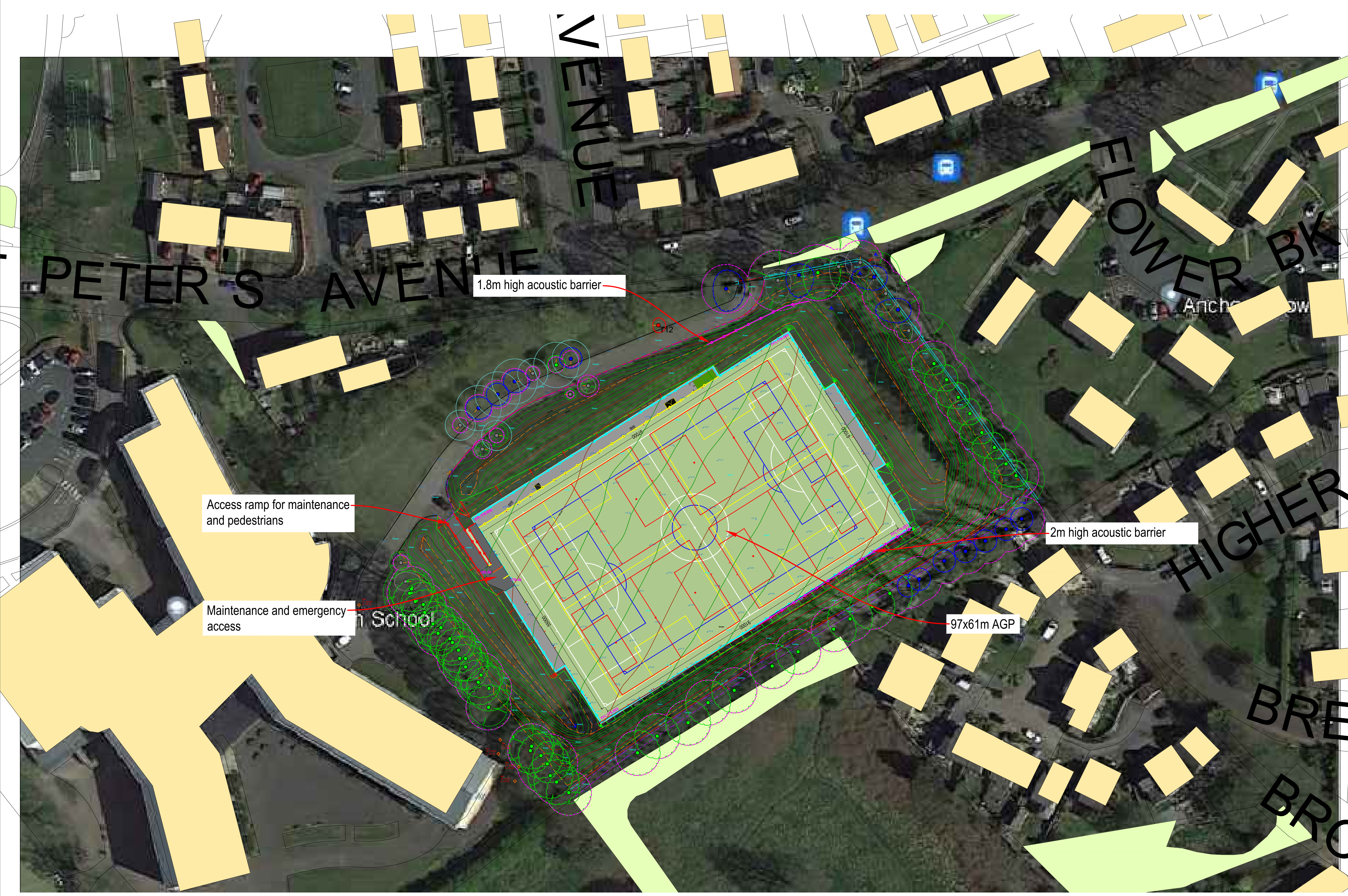
Creation of an AGP



SS&C
SURFACING & CONSTRUCTION CONSULTANTS

CONSULTANTS
Surfacing Standards LTD
Office: 2, The Grange House,
Wetherhead, Coptham, LE15 9WY
01535 400 013

1. DO NOT SCALE FROM DRAWING. ALL DIMENSIONS TO BE CHECKED ON SITE PRIOR TO COMMENCEMENT OF WORKS.
2. THIS DRAWING IS COPYRIGHT TO SURFACING STANDARDS LTD. ALL PERSONNEL SHOULD BE AWARE OF THE HEALTH AND SAFETY PLAN WHICH IS RETAINED IN THE SITE MANAGERS OFFICE.
3.



- Artificial Turf Playing Area
- Footpaths & Hard Standing Areas
- 4.5m High Ball Stop Fence Line
- 1.8 to 2m High Acoustic Barrier
- 1.2m High Ball Stop Fence Line
- 1.2m High Timber Fence Line

Notes:
Line markings to accommodate:
1Nr. 11v11 91x55m (white)
1Nr. 9v9 73x46m (blue)
2Nr. 7v7 54.8x37m* (yellow)
4Nr. 5v5 37x25.32m* (red)

*Smaller than recommended size but acceptable for FA match play

REV	DESCRIPTION	WB	DATE
00	PLANNING ISSUE		26/09/23



AUTHOR ME	
TITLE Ryburn Valley High School Creation of an AGP Proposed Site Plan	
PROJECT SC105	SCALE 1:500
DRAWING No 03	SIZE A1
	REVISION 00