



PLATE 3 – SHOWING GENERAL REDUCTION IN LEVEL. THOUGH ALSO SHOWING BUILD UP OF HAUL ROAD



PLATE 4 – SHOWING FOUNDATION EXCAVATION IN NORTHERN SITE AREA



PLATE 5 – SHOWING FOUNDTION EXCAVATION IN NORTHERN SITE AREA



PLATE 6 – SHOWING FOUNDTION EXCAVATION IN NORTHERN SITE AREA



PLATE 7 – SHOWING CLEARED AREA WITHIN CENTRAL AND SOUTH-WESTERN SITE AREA



PLATE 8 – SHOWING TP201 WITH NATURAL CLAYS ENCOUNTERED AT BASE.

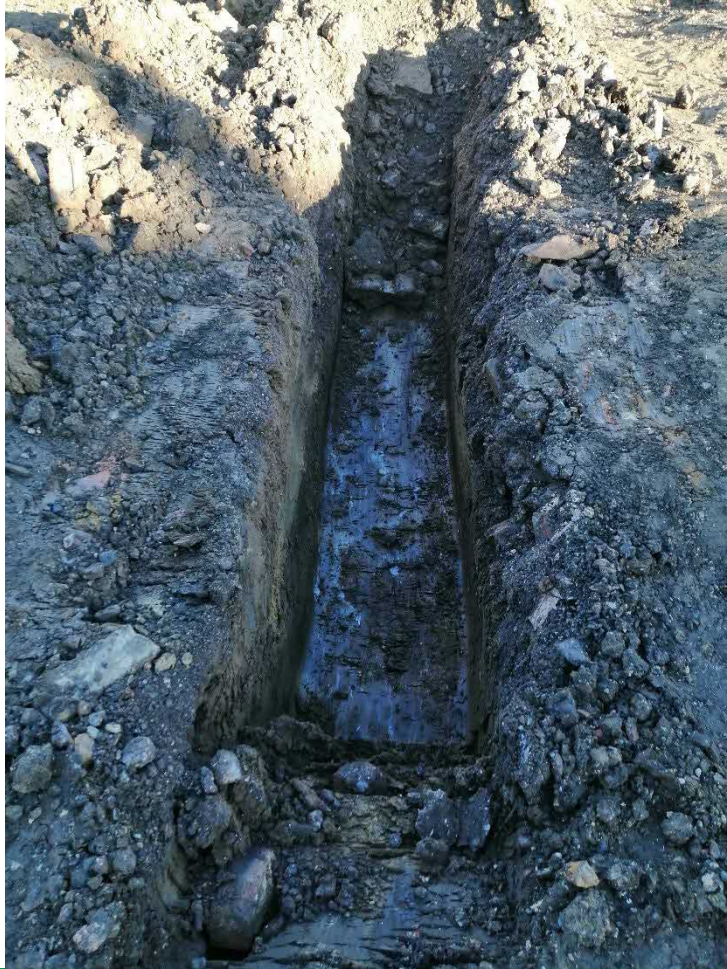


PLATE 9 – SHOWING TP202 WITH NATURAL CLAYS ENCOUNTERED AT BASE.

Well

Well



Ergo Ltd
Unit 38B
North Tyne Industrial Estate
Benton
Newcastle upon Tyne
NE12 9SZ

0191 389 6200

info@ergoenvironmental.com
<http://www.ergoenvironmental.com>

Ref: 22-1155-GV1

Date: 6th October 2023

Graeme Walton

Oaktree Living Limited

Teesside Grange,
Eaglescliffe,
Stockton On Tees,
TS16 0QH

BY Email

Dear Graeme,

Garden Validation Plots 1-5 & 10-11 – Maple Avenue, Shildon

Introduction




ERGO understands that the gardens have been completed within plots 1-5 & 10-11 at the Maple Avenue, Shildon site. In line with the previously completed and approved ERGO Remediation Strategy (22-1155-r1, dated September 2022), plots were inspected to ensure the appropriate clean cover system.

A 600mm cover system is required where Made Ground remains at formation level within proposed garden areas, using certified material with appropriate validation. Natural drift deposits encountered within the upper 600mm of finished ground levels can be directly overlain with a suitable cover (minimum 150mm topsoil).

The garden validation has been undertaken as per the specification detailed in the ERGO Remediation Strategy report. It is noted that in some areas of the site, naturally occurring clean subsoils were present at shallow depth and topsoil was placed directly on top of these materials.

ERGO have been instructed by Oaktree Living Limited to attend the site and inspect the depth of the clean cover layer within garden plots.

For the avoidance of doubt ERGO can confirm that our schedule of works will include the following key attributes:

-  Attendance on site by suitably qualified ERGO Engineers to inspect the thickness of the clean cover layer within the required plots;
-  The sampling and chemical laboratory testing of subsoil & topsoil to confirm chemical suitability at the required frequency;
-  Production of Letter Report detailing the findings of the inspection of the clean cover layer within the residential development gardens.

Chemical Suitability

The chemical suitability of the imported topsoil has previously been tested (DETS report 23-21904, dated 22nd September 2023, and DETS report 23-21904, dated 27th September 2023). Preliminary chemical analysis has confirmed the topsoil deposits placed in the gardens are suitable for re-use within a residential development.

Validation Works

ERGO attended site on the 28th September, 4th October and 5th October 2023 to inspect and validate the presence of 600mm of clean cover comprising a minimum of 150mm topsoil within garden plots 1-5 & 10-11 as indicated by an Oaktree Living representative.

ERGO completed the works in accordance with the approved ERGO Remediation Strategy inspecting all plots and can confirm that suitable topsoil generally comprising dark brown clayey sandy slightly gravelly TOPSOIL was placed in the garden down to depths of 600mm.

Within plots 4-5 and 10-11, ERGO confirmed natural material comprising stiff brown slightly sandy slightly gravelly CLAY was present within the upper 600mm and was directly overlain with topsoil. This is corroborated by the findings of the Phase II site investigation previously completed by ERGO.

No anthropogenic materials were noted within the strata.

Photographs indicating the depths of clean cover are enclosed for reference. Further photographs are available on request.

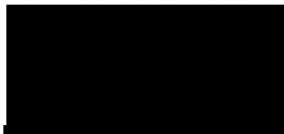
Conclusion

It is considered that within the garden areas of plots 1-5 & 10-11, the cover system has been installed in accordance with the agreed Remediation Strategy.

I trust this information is satisfactory to your requirements, and should I be able to be of any further assistance, please do not hesitate to contact me.

Yours sincerely,

For and on behalf of ERGO Ltd



Phil Craigie

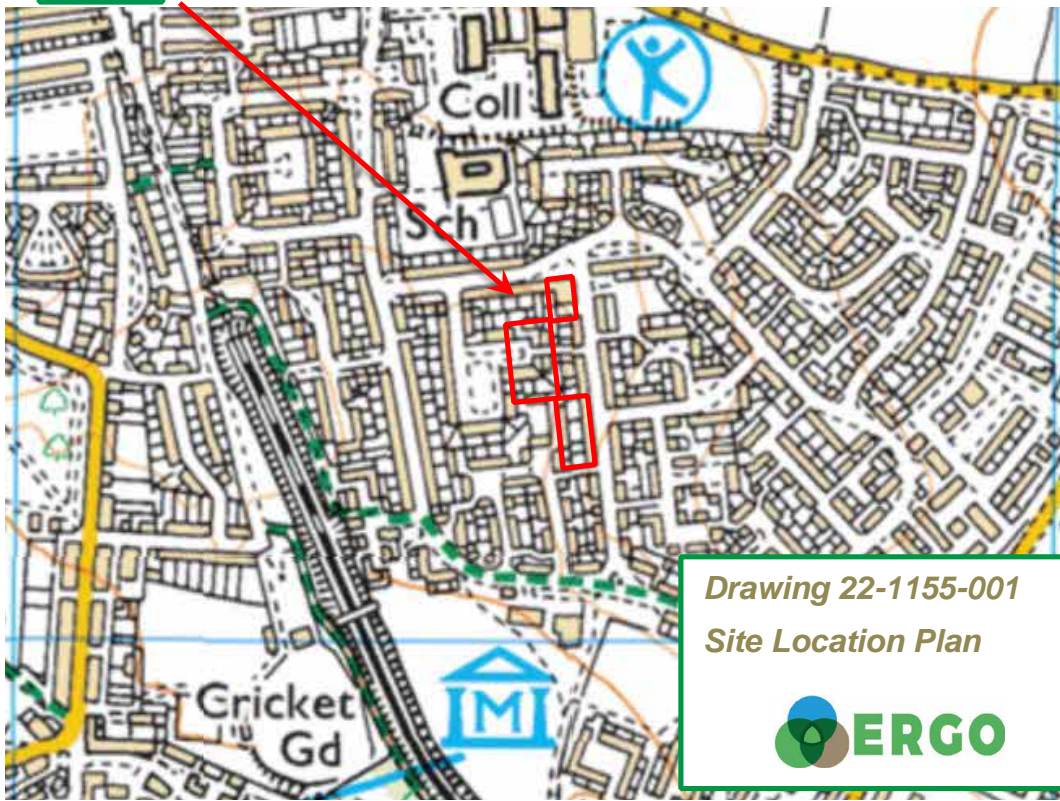
Geoenvironmental Consultant



Enclosed:

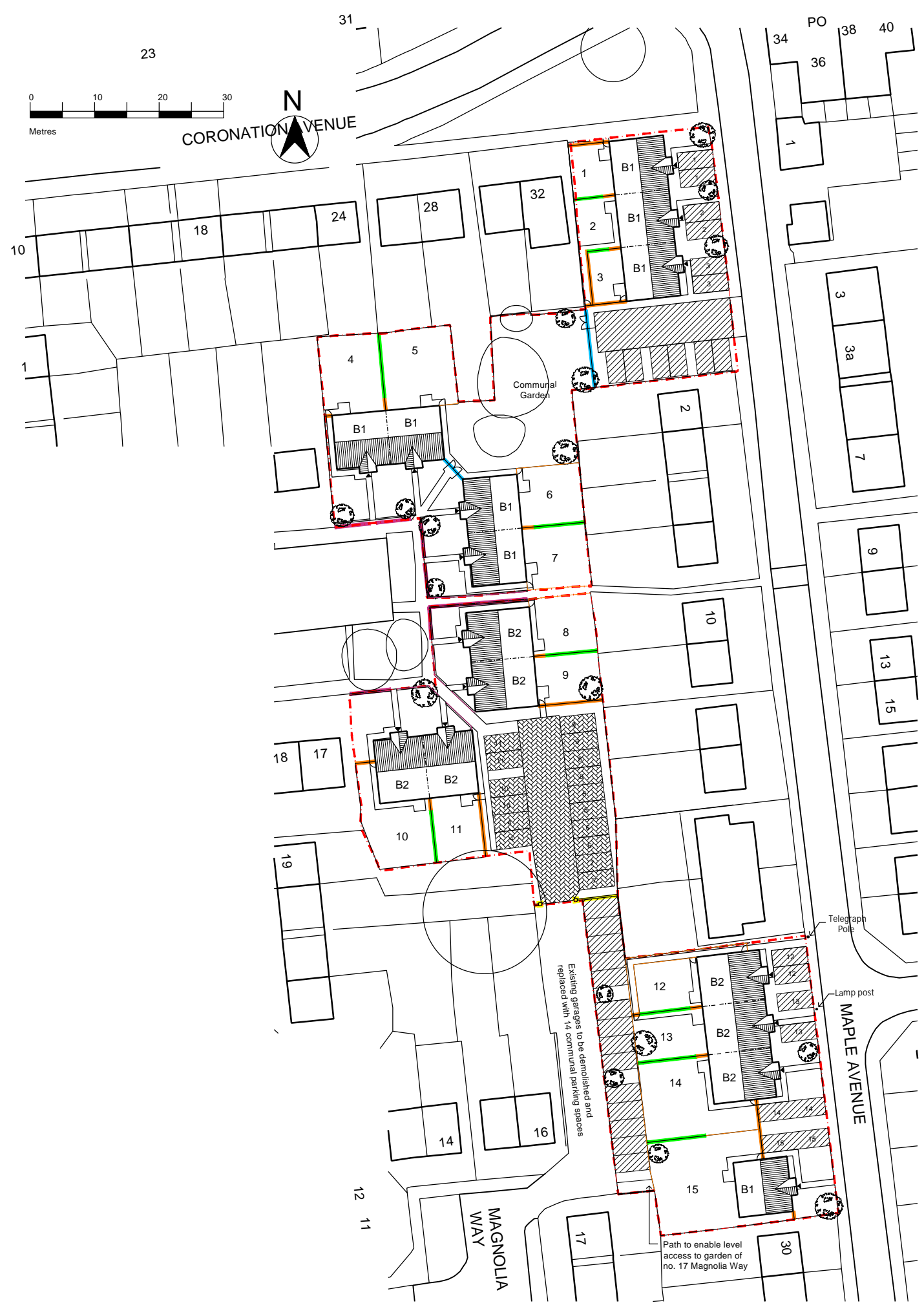
ERGO Drawings
Photographs
Chemical Testing of Placed Materials

ERGO Drawings



*Drawing 22-1155-001
Site Location Plan*





Key:

Notes:

P1	-	22.03.2022	DRAFT	JR	JN
Phase	Revision	Date	Issue	Drawn	Authorised
Client: Tolent Living Limited			Job No: 22-1155	Date: 22.03.2022	
			Drawing No: 002	Scale: NTS	
Job Title: Maple Avenue, Shildon			Drawing Title: Proposed Development Plan		



Ergo Environmental Ltd
 Tel: 0191 389 6200
 Website: www.ergoenvironmental.com
 Email: info@ergoenvironmental.com

The client must not amend any drawing, design or other intellectual property produced by Ergo Environmental Ltd without permission in writing from Ergo Environmental Ltd in advance of any amendments being made. In the event that such written permission is not obtained in advance of the amendments being made, Ergo Environmental Ltd shall not be liable for any damage and/or losses occurring as a result of the amended drawing, design or intellectual property.

Photographs



PLATE 1 – PLACED TOPSOIL MATERIALS AND DEPTH VALIDATION OF PLOT 1



PLATE 2 – GENERAL PLACEMENT OF MATERIALS WITHIN PLOTS 1-2