

Clent is littered with quirky small properties with unusual and small gardens. Driveways are also a premium here.

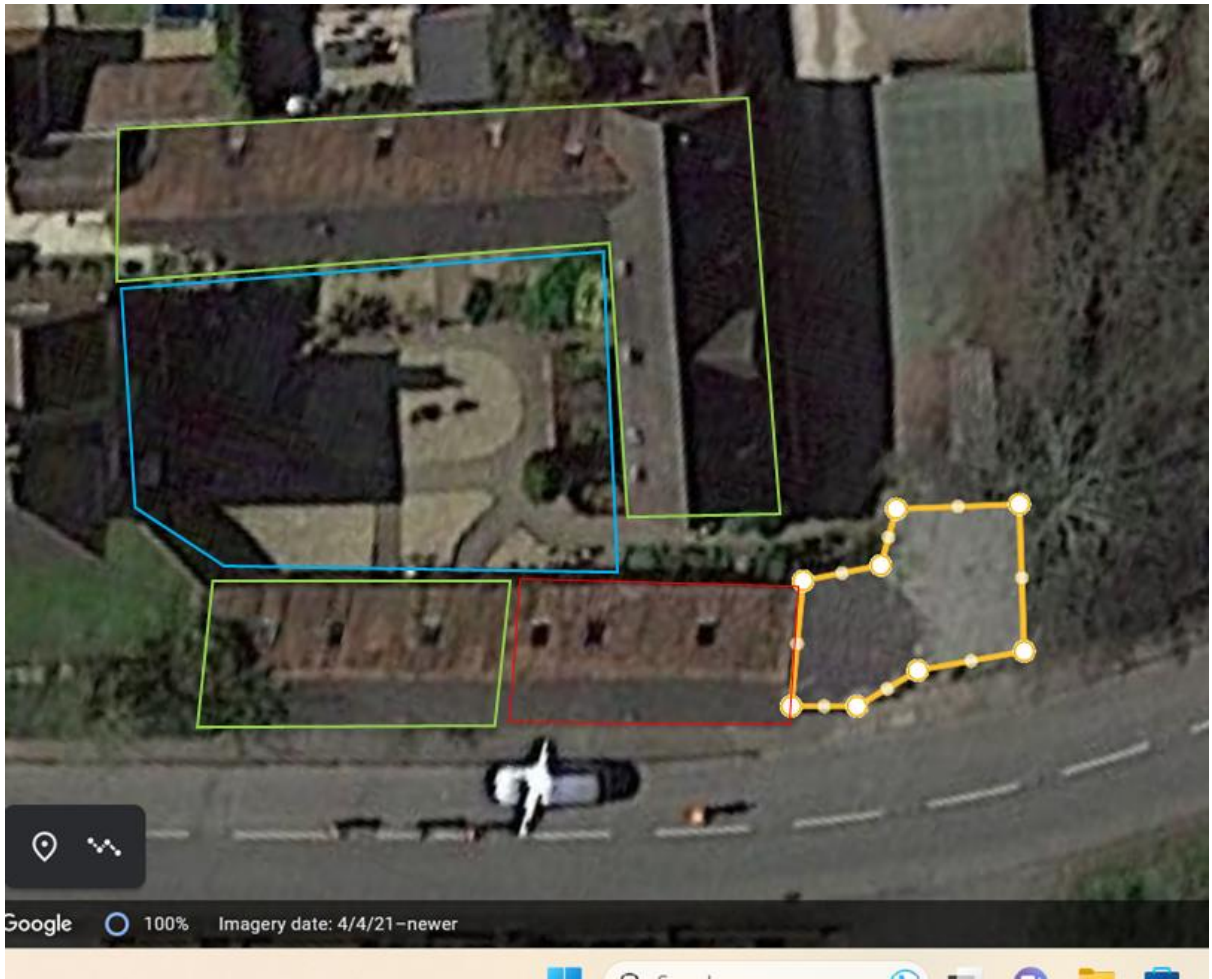
There's a property registered as "The Flat, Bromsgrove Road, Clent, DY99QA" which is opposite my house. Its bigger than my proposed dwelling - with a huge double bedroom, living room, and bathroom upstairs and a kitchen and bathroom downstairs.

There is no driveway for it – tenants park their cars on Clent Nurseries car park (as they own it) the garden is a very small courtyard at the front of the property that faces the carpark and is 32m² highlighted with the yellow triangle in the first photo:



Next there are 5 small barn conversions a hundred or so yards up the road from me - Old Mill Farm barns, Bromsgrove Road, Clent. The one (highlighted in red) has a 35m² courtyard garden (highlighted in yellow) adjacent to the road. The other 4 properties (highlighted green) share an open courtyard between them (highlighted blue)

Below is a birds eye view and a view of the courtyard adjacent to the Bromsgrove Road.



A couple of hundred yards up the road is number 1 Woodman cottages, Bromsgrove Road, Clent.

It is a 2 or 3 bedroom house. The rear garden is 17m². There is no driveway and the owner parks her car at the French Hen.

House highlighted with a yellow line and garden shaded yellow:



Number 2 Woodman cottages, Bromsgrove Road, Clent is a 2 or 3 bedroom house. The rear garden is 17m² with access to it only through the house. There is no driveway.

House highlighted with a yellow line and garden shaded yellow:



Cosy Corner cottage is a vaulted ceiling house very similar to the proposed dwelling.

It has a small 16m² driveway, with a partition fence and modest garden behind it which is 23m²

Here it is with the house shown by a yellow line, the driveway by a red line and garden by a blue line.



Doll Park cottage, Sunrise, Why cottage and Laurel cottage (Bromsgrove Road, Clent) all share a communal garden of 90m². They have no driveways.

The properties are highlighted by a yellow line and the garden by red.

