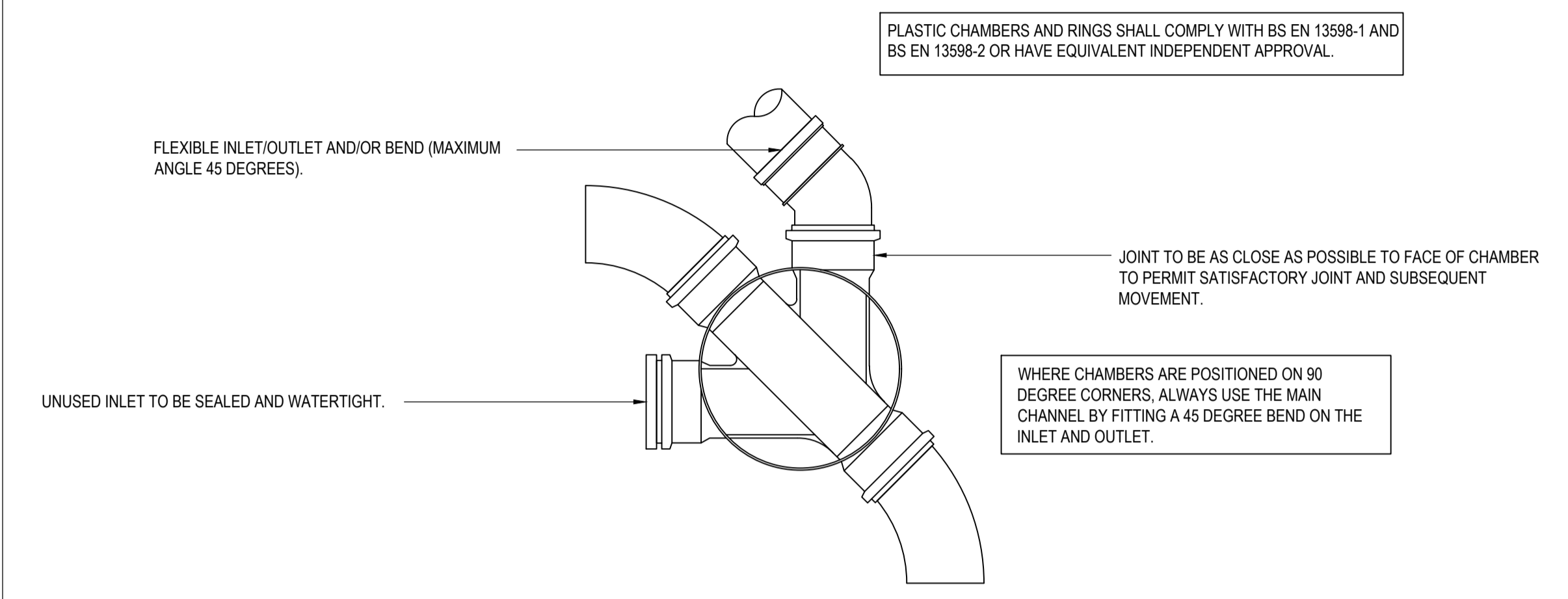
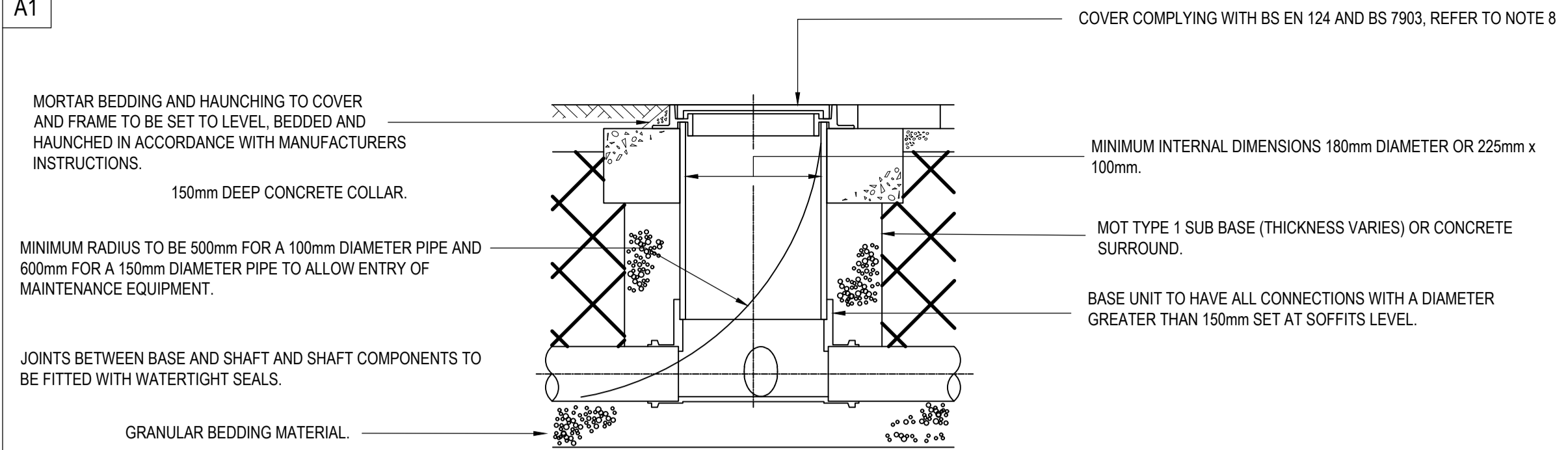


This drawing is copyright and may not be copied or reproduced without the written consent of ML Consulting.
 The contractor is responsible for setting out and must check all levels and dimensions prior to work being put in hand.
 This drawing should not be scaled.
 Only written dimensions are to be taken in respect of this project.
 The designer is to be immediately notified of any suspect omissions or discrepancies.



TRENCH WIDTHS TABLE

Pipe Dia	Trench width max.	Y
100	600	100
150	600	100
225	700	100
300	750	100

PIPE TRENCH TABLE

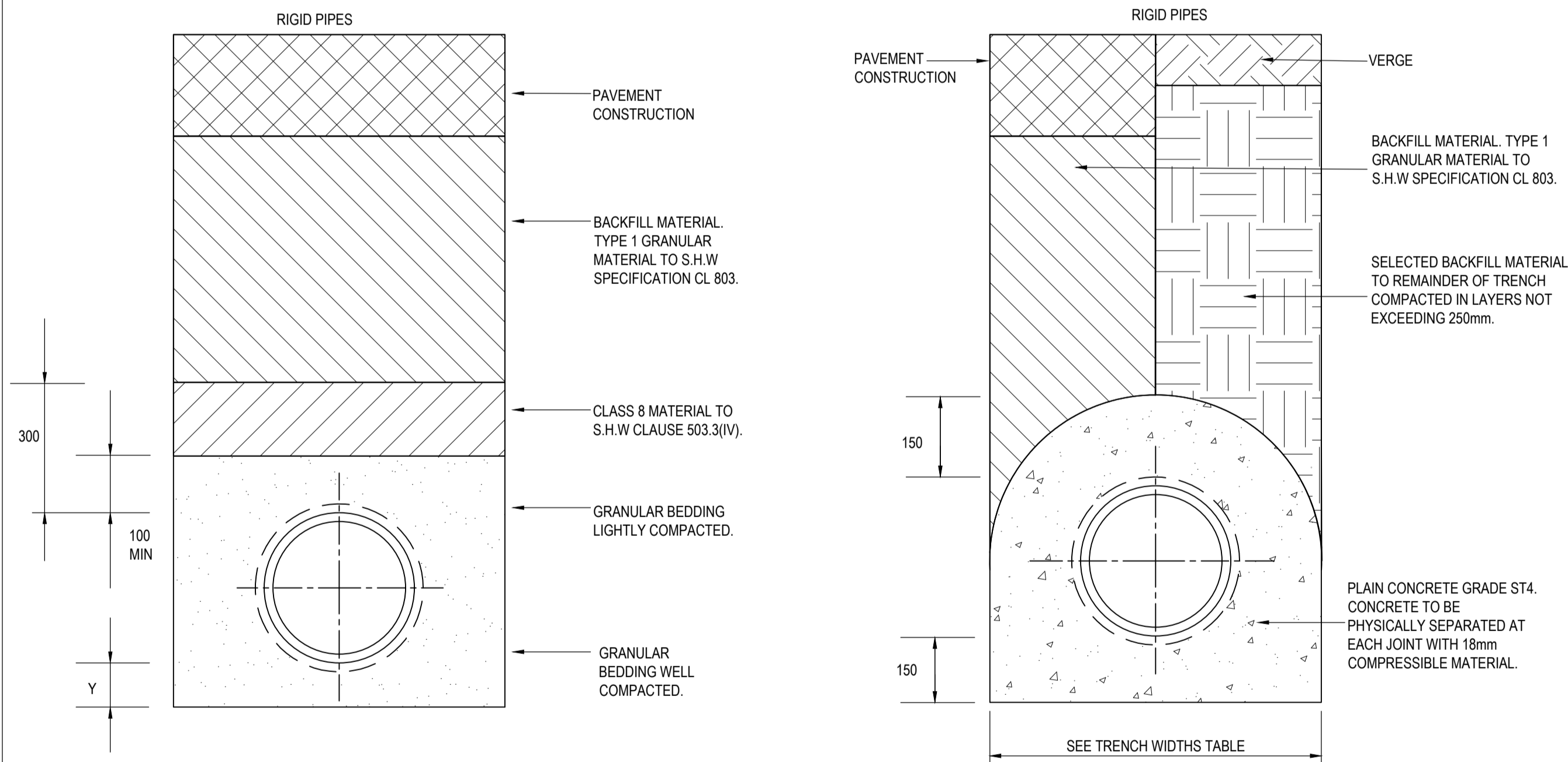
PIPE DIA. (mm)	TRENCH WIDTH (MAXIMUM)	DIMENSION Y (MINIMUM)			
		UNIFORM SOILS		ROCK OR VARIABLE MATERIAL	
		BARRELS	SOCKETS	BARRELS	SOCKETS
150	600	100	50	200	150
225	700	100	50	200	150
300	850	100	50	200	150

ROCKER PIPE TABLE

PIPE DIA.	ROCKER PIPE LENGTH (m)
150-600	0.60
601-750	1.00
750 AND OVER	1.25

TYPICAL INSPECTION CHAMBER DETAIL - TYPE 4 (RIGID MATERIAL DETAIL)

(MAXIMUM DEPTH TO SOFFIT 2.0m)



GRANULAR PIPE BEDDING

FOR PIPE BEDDING, HAUNCH AND SURROUND GRANULAR MATERIAL SHALL BE IN ACCORDANCE WITH SHW CLAUSE 503.3(I).

SELECTED BACKFILL MATERIAL

SELECTED BACKFILL MATERIAL TO CLASS 8 MATERIAL SHALL BE IN ACCORDANCE WITH SHW CLAUSE 503.3(IV). SELECTED FILL MATERIAL, WHETHER SELECTED FROM LOCALLY EXCAVATED MATERIAL OR IMPORTED, SHALL CONSIST OF UNIFORM, READILY COMPACTIBLE MATERIAL, FREE FROM VEGETABLE MATTER, BUILDING RUBBISH AND FROZEN MATERIAL, OR MATERIALS SUSCEPTIBLE TO SPONTANEOUS COMBUSTION, AND EXCLUDING CLAY OF LIQUID LIMIT GREATER THAN 80 AND/OR PLASTIC LIMIT GREATER THAN 55 AND MATERIALS OF EXCESSIVELY HIGH MOISTURE CONTENT. CLAY LUMPS AND STONES SHALL BE RETAINED ON 100mm AND 40mm SIEVES RESPECTIVELY.

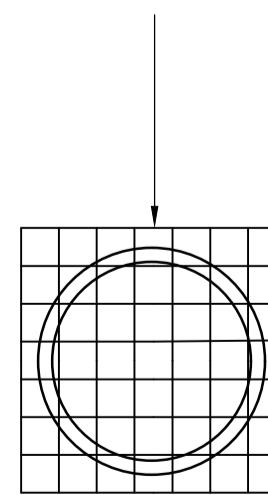
GENERAL FILL MATERIAL

WHETHER SELECTED FROM LOCALLY EXCAVATED MATERIAL OR IMPORTED, SHALL CONSIST OF UNIFORM, READILY COMPACTIBLE MATERIAL, FREE FROM VEGETABLE MATTER, BUILDING RUBBISH AND FROZEN MATERIAL OR MATERIALS SUSCEPTIBLE TO SPONTANEOUS COMBUSTION AND EXCLUDING CLAY OF LIQUID LIMIT GREATER THAN 80 AND/OR PLASTIC LIMIT GREATER THAN 55 AND MATERIALS OF EXCESSIVELY HIGH MOISTURE CONTENT. CLAY LUMPS AND STONES SHALL BE RETAINED ON 75mm AND 37.5mm SIEVES RESPECTIVELY.

COMPACTED FILL TYPE 1

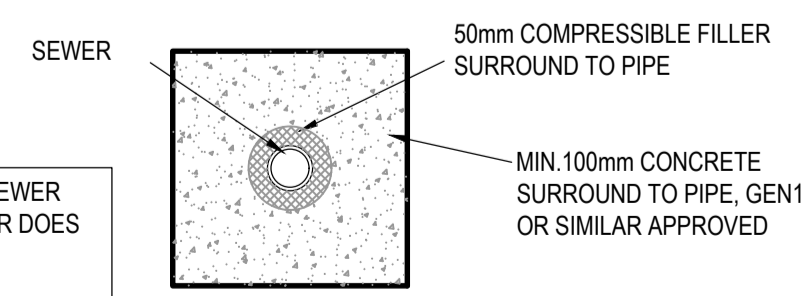
TYPE 1 GRANULAR BACKFILL MATERIAL TO SPECIFICATION FOR HIGHWAY WORKS (SEE NOTE 7).

A 25mm DEBRIS SCREEN SHALL BE INSTALLED TO PREVENT DEBRIS ENTERING THE PUBLIC SEWER SYSTEM. SCREENS TO BE REMOVED WHEN ALL DEVELOPMENT HAS BEEN COMPLETED.



TEMPORARY DEBRIS SCREEN

DETAIL APPLICABLE WHERE SEWER DIRECTLY BELOW BUILDING OR DOES NOT MEET MINIMUM COVER REQUIREMENT



PIPE PROTECTION DETAIL

- DO NOT SCALE.
- UNITS IN MILLIMETRES UNLESS NOTED OTHERWISE.
- MANHOLE COVERS AND FRAMES SHALL COMPLY WITH THE RELEVANT PROVISIONS OF BS EN 124 & BS 7903.
- ALL PIPES TO ENTER MANHOLES WITH SOFFITS LEVEL UNLESS OTHERWISE SHOWN.
- MINIMUM 150mm STEP BETWEEN JOINTS IN PRECAST CONCRETE RING AND INSITU CONCRETE SURROUND. MAXIMUM INSITU CONCRETE POUR HEIGHT - 2.00m.
- INSITU CONCRETE GRADE TO BE IN ACCORDANCE WITH BS8500 AND BS EN 206-1.
- ALL MATERIALS TO BE B.S. KITE MARKED.
- THE MINIMUM DEPTH OF COVER TO THE CROWN OF GRAVITY PIPES WITHOUT CLASS A CONCRETE SURROUND PROTECTION SHOULD BE AS FOLLOWS:
 DOMESTIC GARDENS AND PATHWAYS WITHOUT ANY POSSIBILITY OF VEHICULAR ACCESS, 0.35m;
 DOMESTIC DRIVEWAYS, PARKING AREAS AND YARDS WITH HEIGHT RESTRICTIONS TO PREVENT ENTRY BY VEHICLES WITH A GROSS VEHICLE WEIGHT IN EXCESS OF 7.5 TONNES, 0.50m;
 DOMESTIC DRIVEWAYS, PARKING AREAS AND NARROW STREETS WITHOUT FOOTWAYS (E.G. MEWS DEVELOPMENT) WITH LIMITED ACCESS FOR VEHICLES WITH A GROSS WEIGHT IN EXCESS OF 7.5 TONNES, 0.90m;
 AGRICULTURAL LAND AND PUBLIC OPEN SPACE, 0.90m;
 OTHER HIGHWAYS AND PARKING AREAS WITH UNRESTRICTED ACCESS TO VEHICLES WITH A GROSS VEHICLES WEIGHT IN EXCESS OF 7.5 TONNES, 1.20m.
- PRE CAST CONCRETE MANHOLE RINGS SHALL NOT BE CUT UNDER ANY CIRCUMSTANCES.
- ANY HORIZONTAL LEDGES ARE TO BE BENCHED IN CLASS (j) MORTAR AT 45 DEGREES.
- A CLEAR OPENING OF 400mm x 445mm MINIMUM MUST BE PROVIDED THROUGH THE RAISING COURSES FOR MAINTENANCE PURPOSES.
- ALL MATERIALS AND WORKMANSHIP IN CONNECTION WITH WITH BS EN 752 'DRAIN AND SEWER SYSTEMS OUTSIDE BUILDINGS', BS EN 1610 AND THE CURRENT VERSION OF THE BUILDING REGULATION, SECTION H-DRAINAGE AND WASTE DISPOSAL.
- WHERE THE CROWN OF THE PIPES IS WITHIN 300mm OF THE UNDERSIDE OF THE BUILDING SLAB, CONCRETE ENCASEMENT SHOULD BE USED INTEGRAL WITH THE SLAB.
- INSPECTION CHAMBERS TO BE FLEXIBLE MATERIAL AND COMPLY WITH BS EN 13598 - 1 & BS EN 13598 - 2 OR HAVE EQUIVALENT INDEPENDENT APPROVAL.
- PIPEWORK AND MANHOLES TO BS EN 1916 AND 1917 RESPECTIVELY.

T1 P1	Pop-up added and revised to Tender Preliminary Issue	04.08.23 02.08.23	HA HA
Ref.	Description	Date	By
Project: Ollerton SDC Fire & Rescue Ollerton		Issue: Tender	
Drawn: HA	Engineer: HA	Checked: JL	
Scale: 1:20 at A1	Date: Aug 23		
Drawing: Drainage Construction Details		Project No: 23-202	Revision: T1
		Drawing No: 501	