

Bat Emergence Surveys at
Llwyntidman Lodge, Maesbrook,
Oswestry, Shropshire
SY10 8QB
Grid Ref. SJ 2870 2076

On 14th August and 29th September 2023

Report completed 16th November 2023
Ref: LLY140823

Survey by:
Susan Worsfold BSc (Hons) ACIEEM
Lyngarth,
Ellesmere Road,
St. Martins,
Oswestry,
Shropshire
SY11 3HT

Requested by:
Reuben Wrisdale
Site address

01691 772310
or 07752 105600
s.worsfold@hotmail.co.uk

Introduction

Susan Worsfold BSc (Hons) ACIEEM is an experienced wildlife surveyor, licensed bat and great crested newt worker and voluntary bat roost visitor. Registration number CLS0895 2015-12555-CLS-CLS (CL15 Bat Roost Visitor Level 1) and registration number CLS 0895 2015-12556-CLS-CLS (CL18 Bat Survey Level 2) (Natural England) and S089569-1 (Natural Resources Wales); Great crested newt licence registration number 2016-19947-CLS-CLS (NE) and S089570-1 (NRW)

This report was commissioned by the site owner, Reuben Wrisdale.

The purpose of the report is to provide results from bat emergence surveys as recommended in the Preliminary Ecological Appraisal carried out 17th July 2023. This is necessary to comply with local planning policy and government legislation and avoid any offence being committed. Also, to describe any compensation, mitigation and enhancement measures which should be taken.

Methodology

Scope of the Assessment

The report describes the methods and results of the emergence surveys to supplement the previous report.

Field Survey

Two dusk emergence surveys were carried out in accordance with *Bat surveys for professional ecologists: Good Practice Guidelines (3rd Edn)* (Collins 2016) and the Interim Guidance Note: Use of night vision aids for bat emergence surveys and further comment on dawn surveys (*Bat Conservation Trust, May 2022*).

Frequency division detectors were used to record any bat sounds around the building for later analysis on the computer. These were Peersonic RPA3 and Echo Meter EM3.

Infrared night vision aids (NVAs) were used alongside observers. These were Nightfox Red and Nightfox Whisker night vision goggles, mounted on tripods, with Nightfox XB5 IR torches.

Activity Survey

14/8/23

<i>Observer or area</i>	<i>Equipment</i>
Sue Worsfold (SW) north west corner	Peersonic RPA3 + Nightfox Red NVA
Anne Thackwell (AT) south east corner	Peersonic RPA3 + Nightfox Red NVA
South west corner	Nightfox Whisker NVA

Bats recorded:

1st bat:

Soprano pipistrelle (*Pipistrellus pygmaeus*) 20.59

Other species recorded:

Common pipistrelle (*Pipistrellus pipistrellus*)

<i>Observer or Area</i>	<i>Time</i>	<i>No. Bats</i>	<i>Observation</i>	<i>Identification from visual or correlation with sonograms</i>
SW	21:10	2	Flew N to S	Soprano pipistrelle
SW	21:11	1	Flew S to N	Soprano pipistrelle
SW	21:25	1	Foraging nearby	Soprano pipistrelle
SW	21:36	1	Flew S to N	Unidentified
AT	21.00	1	Flew over roof N to S	Soprano pipistrelle
AT	21.05	1	Flew S to N	Soprano pipistrelle
AT	21.09	1	Flew round corner of house	Soprano pipistrelle
AT	21:22	1	Foraging nearby	Common pipistrelle
AT	21.55	1	Foraging nearby	Common pipistrelle

29/9/23

<i>Observer or area</i>	<i>Equipment</i>
Sue Worsfold (SW) north west corner	Peersonic RPA3 + Nightfox Red NVA
Craig Thomas (CT) south east corner	Peersonic RPA3 + Nightfox Red NVA
South west corner	Nightfox Whisker NVA

Bats recorded:

1st bat:

Soprano pipistrelle (*Pipistrellus pygmaeus*) 19.16

Other species recorded:

Common pipistrelle (*Pipistrellus pipistrellus*)

<i>Observer or Area</i>	<i>Time</i>	<i>No. Bats</i>	<i>Observation</i>	<i>Identification from visual or correlation with sonograms</i>
SW	19:16	1	Flew N to S	Soprano pipistrelle
CT	19:33	1	Flew from E towards house then along hedge line SW	Soprano pipistrelle

Assessment of Effects and Mitigation Measures

No bats were found to be using the building as a roost at the time of the surveys.

There is not considered to be any current threat to the conservation status of bats or danger of harm to individuals.

However, the site and environment is suitable for foraging and commuting bats and bats may enter at any time.

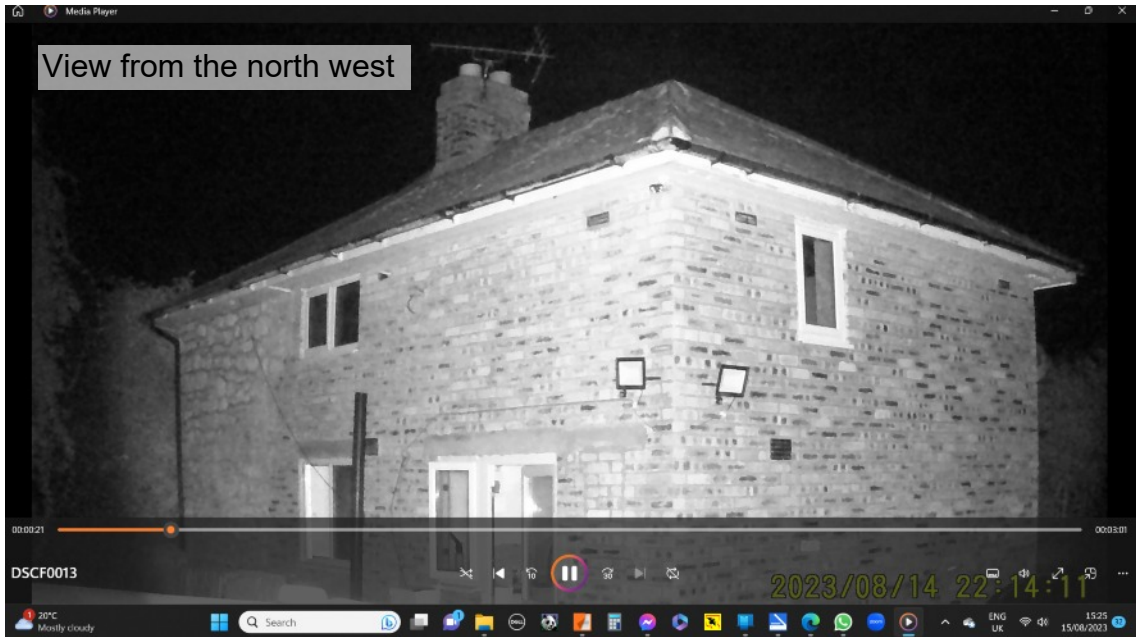
If bats are found at any stage of the development then work in that area must stop and a licensed bat worker contacted for advice.

A lighting plan should be designed in accordance with the Bat Conservation Trust guidelines: <https://www.theilp.org.uk/documents/guidance-note-8-bats-and-artificial-lighting/>

Survey Conditions



Date	Sunset/ Sunrise	Start Time	End Time	Temp. Start °C	Relative Humidity Start %	Temp. End °C	Relative Humidity End %	Cloud %	Wind 0-12	Rain
14/8/23	20:40	20:25	22:10	18	78	14	91	80	1	No
29/9/23	18.55	18.1	20.35	13	86	12	88	80	0	No

Still Photographs from NVA's



Aerial Photograph Showing Positions of Observers



-  Observer, NVA and bat detector
-  NVA

