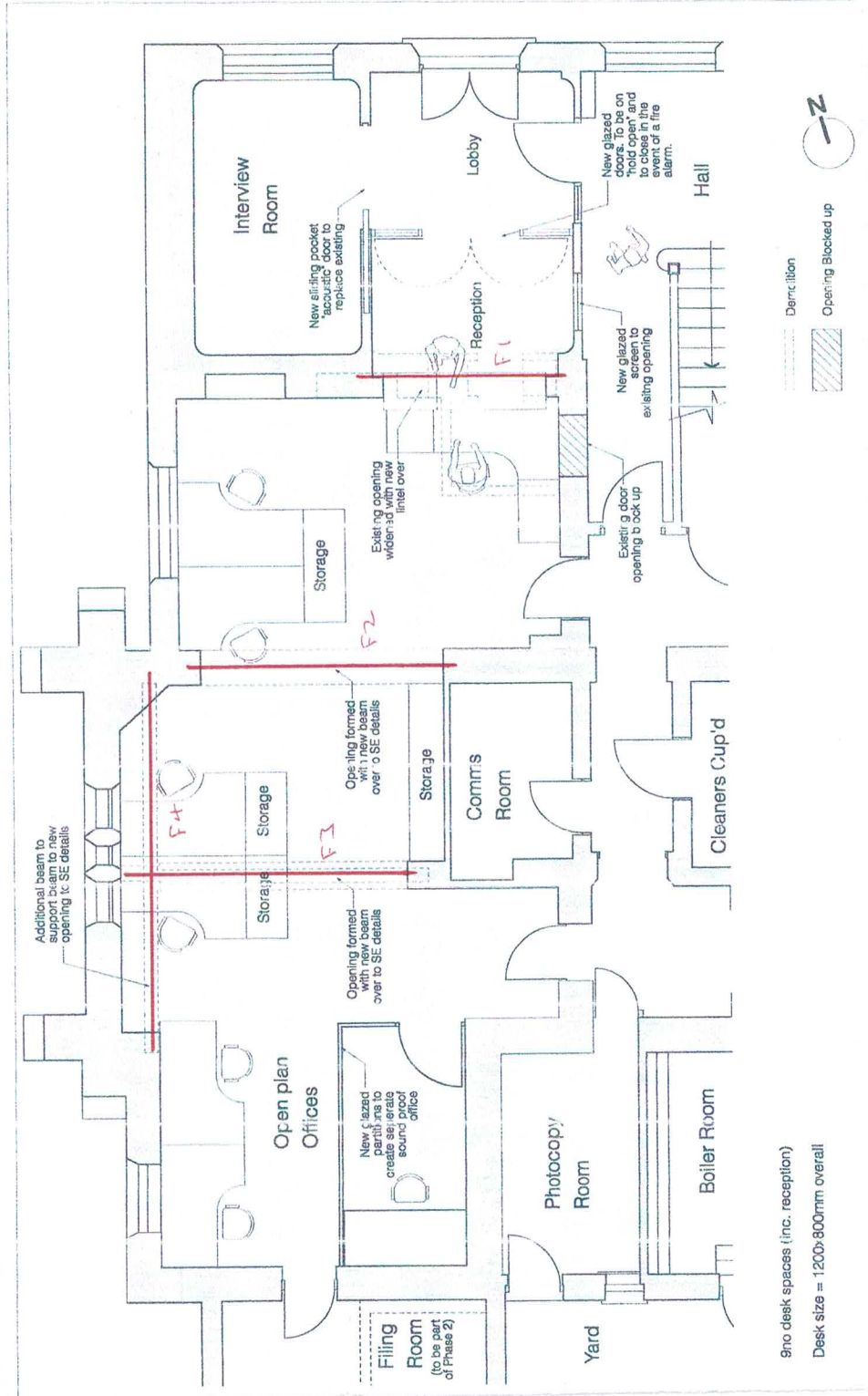


Project: The Old College, Gallery Road, London SE21 7AE		Job No. 4864
Engineer: DP	Date: Jul 22	Page: 1
<u>LOADINGS</u>	<i>characteristic</i>	<i>ultimate</i>
<u>Flat Roof</u>		
<i>Dead,</i> finishes	0.5 kN/m ²	
boarding & joists	0.2 kN/m ²	
plaster & insulation	0.3 kN/m ²	
<i>Imposed,</i> snow	<u>0.6 kN/m²</u>	
	1.6 kN/m ²	2.4 kN/m ²
<u>Pitched Roof – with plaster</u>		
<i>Dead,</i> tiles	0.5/cos 30	
rafters, etc.	0.2/cos 30	
plaster & insulation	0.3/cos 30	
<i>Imposed,</i> snow	<u>0.6 kN/m²</u>	
	1.75 kN/m ²	2.6 kN/m ²
<u>Pitched Roof – without plaster</u>		
<i>Dead,</i> tiles, rafters, etc.	0.7/cos 30	
<i>Imposed,</i> snow	<u>0.6 kN/m²</u>	
	1.4 kN/m ²	2.1 kN/m ²
<u>Ceiling</u>		
<i>Dead,</i> boarding & joists	0.2 kN/m ²	
plaster	0.25 kN/m ²	
<i>Imposed,</i> storage	<u>0.25 kN/m²</u>	
	0.7 kN/m ²	1.1 kN/m ²
<u>Floors</u>		
<i>Dead,</i> partitions	0.5 kN/m ²	
boarding, joists & ceiling	0.5 kN/m ²	
<i>Imposed,</i> office	<u>2.5 kN/m²</u>	
	3.5 kN/m ²	5.4 kN/m ²

Project:	The Old College, Gallery Road, London SE21 7AE		Job No.	4864	
Engineer:	DP	Date:	Jul 22	Page:	2
<u>LOADINGS</u> (cont.)		<i>characteristic</i>		<i>ultimate</i>	
<u>Wall – cavity</u>					
Dead,	brickwork	2.0 kN/m ²			
	blockwork	1.7 kN/m ²			
	plaster, insulation	<u>0.3 kN/m²</u>			
		4.0 kN/m ²		5.6 kN/m ²	
<u>Wall – external solid, 215 thick</u>					
Dead,	brickwork	4.3 kN/m ²			
	plaster	<u>0.2 kN/m²</u>			
		4.5 kN/m ²		6.3 kN/m ²	
<u>Wall – external solid, 330 thick</u>					
Dead,	brickwork	6.6 kN/m ²			
	plaster	<u>0.2 kN/m²</u>			
		6.8 kN/m ²		9.5 kN/m ²	
<u>Wall – external stud</u>					
Dead,	tiles/ finishes	0.5 kN/m ²			
	timbers	0.2 kN/m ²			
	plaster, insulation	<u>0.3 kN/m²</u>			
		1.0 kN/m ²		1.4 kN/m ²	
<u>Wall – internal stud</u>					
Dead,	timbers	0.1 kN/m ²			
	plaster	<u>0.4 kN/m²</u>			
		0.5 kN/m ²		0.7 kN/m ²	
<u>Wall – internal solid</u>					
Dead,	masonry	2.0 kN/m ²			
	plaster	<u>0.4 kN/m²</u>			
		2.4 kN/m ²		3.4 kN/m ²	

Project: ODC	Job No. 4804
Engineer: DP	Date: 02/22
	Page: 3

PLAN



Please note only F1 is relevant to this work. F2, F3 and F4 are NOT required.

9 no desk spaces (inc. reception)
Desk size = 1200x800mm overall

Project: OLD DULWICH COLLEGE	Job No. 4864
Engineer: DP	Date: 07/22
<p><u>F1</u></p> <p>$f = (1.4 + 0.3) \cdot 8.5/2$</p> <p>$yf = 3.5 \cdot 8.5/2$</p> <p>well = 9.4.3.0</p> <p>s/w =</p> <p>L =</p> <p>$i_z =$</p> <p>mult =</p> <p>$\delta \leq$</p> <p>$\frac{1}{4} \geq$</p> <p><u>Supports</u></p> <p>by inspection</p> <p><u>Spreader</u></p> <p>by inspection</p>	<p>7.2 m</p> <p>14.9 ---</p> <p>28.2 ---</p> <p>2.0 ---</p> <p>52.3 m</p> <p>76.0 m</p> <p>3.0 m</p> <p>79 m</p> <p>114 m</p> <p>86 m</p> <p>8.3 ---</p> <p>3242 m⁺</p> <p><u>2/152UC30s</u></p> <p><u>150x90PFCs</u></p> <p><u>2/152UC30s</u></p>