

# **CVA Avonmouth**

CDM 2015 Design Statement:

Date: 09.10.2023  
Operator:

Operator  
Telephone  
Fax  
e-Mail

## Table of contents

<b>CVA Avonmouth</b>	
Project Cover	1
Table of contents	2
<b>Thorn 93901122 AFP2 S 48L70 740 A6 NONE CL1 GY</b>	
Luminaire Data Sheet	3
<b>Thorn 92994629 AFP2 M 96L70 740 A6 NONE CL1 GY</b>	
Luminaire Data Sheet	4
<b>Option 1 - 12m Columns with 6m at entrance</b>	
Luminaire parts list	5
Luminaires (layout plan)	6
Luminaires (coordinates list)	7
False Colour Rendering	9
<b>Exterior Surfaces</b>	
<b>Ground Element 1</b>	
<b>Surface 1</b>	
Isolines (E)	10
Value Chart (E)	11
<b>Spill Light</b>	
<b>Surface 1</b>	
Isolines (E)	12
Value Chart (E)	13

Operator  
 Telephone  
 Fax  
 e-Mail

## Thorn 93901122 AFP2 S 48L70 740 A6 NONE CL1 GY / Luminaire Data Sheet

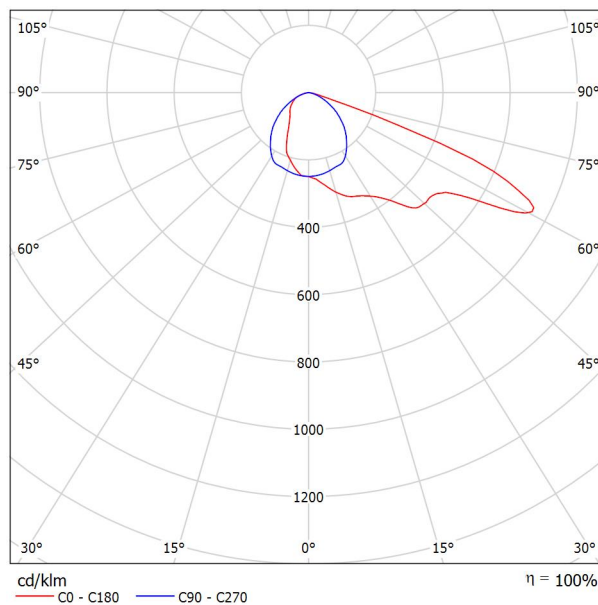


Luminaire classification according to CIE: 100  
 CIE flux code: 37 73 97 100 100

A compact, lightweight, general purpose LED area floodlight. With small body. LED converter driving 48 LEDs at 700mA with Asymmetrical 60° light distribution. IP66, IK08, Class I electrical. Body: die-cast aluminium (EN AC-44300), Light grey 150 sanded textured (close to RAL9006).. Enclosure: 4mm thick toughened glass. Reversible mounting stirrup supplied, optional spigot adaptors available separately for post top mounting. Complete with 4000K LED.

Dimensions: 429 x 349 x 99 mm  
 Luminaire input power: 101 W  
 Luminaire luminous flux: 15919 lm  
 Luminaire efficacy: 158 lm/W  
 weight: 7.6 kg  
 Scx: 0.052 m²CL1: CL1: Earthed

Luminous emittance 1:



Due to missing symmetry properties, no UGR table can be displayed for this luminaire.

Operator  
Telephone  
Fax  
e-Mail

## Thorn 92994629 AFP2 M 96L70 740 A6 NONE CL1 GY / Luminaire Data Sheet

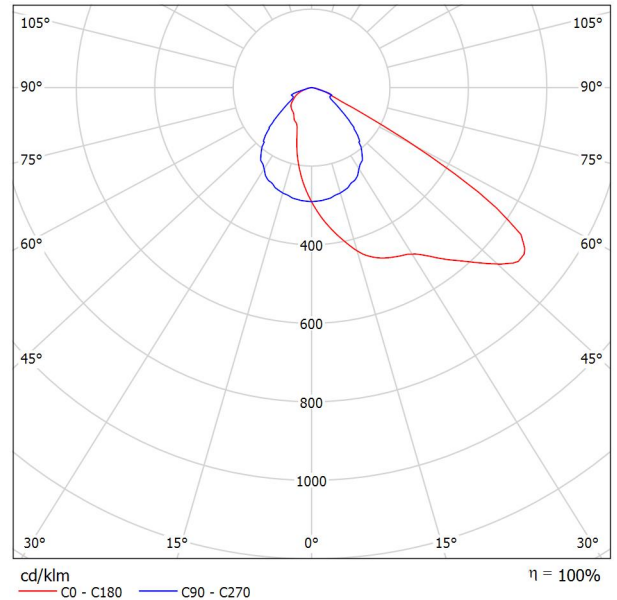


Luminaire classification according to CIE: 100  
CIE flux code: 42 86 99 100 100

A compact, lightweight, general purpose LED area floodlight. With medium body. LED converter driving 96 LEDs at 700mA with Asymmetrical 40° light distribution. IP66, IK08, Class I electrical. Body: die-cast aluminium (EN AC-44300), Light grey 150 sanded textured (close to RAL9006). Enclosure: 4mm thick toughened glass. Reversible mounting stirrup supplied, optional spigot adaptors available separately for post top mounting. Complete with 4000K LED.

Dimensions: 579 x 360 x 115 mm  
Luminaire input power: 197 W  
Luminaire luminous flux: 31792 lm  
Luminaire efficacy: 161 lm/W  
weight: 10.1 kg  
Scx: 0.223 m<sup>2</sup>740: 740: With Ra>70, 4000K LEDs

Luminous emittance 1:

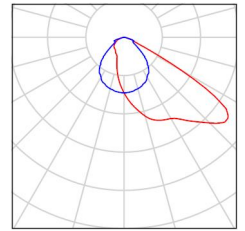


Due to missing symmetry properties, no UGR table can be displayed for this luminaire.

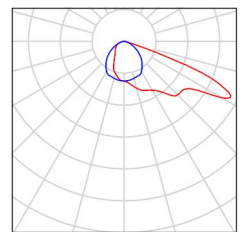
Operator  
Telephone  
Fax  
e-Mail

### Option 1 - 12m Columns with 6m at entrance / Luminaire parts list

24 Pieces Thorn 92994629 AFP2 M 96L70 740 A6 NONE  
CL1 GY  
Article No.: 92994629  
Luminous flux (Luminaire): 31792 lm  
Luminous flux (Lamps): 31792 lm  
Luminaire Wattage: 197.0 W  
Luminaire classification according to CIE: 100  
CIE flux code: 42 86 99 100 100  
Fitting: 1 x LED 197 W (Correction Factor 0.950).



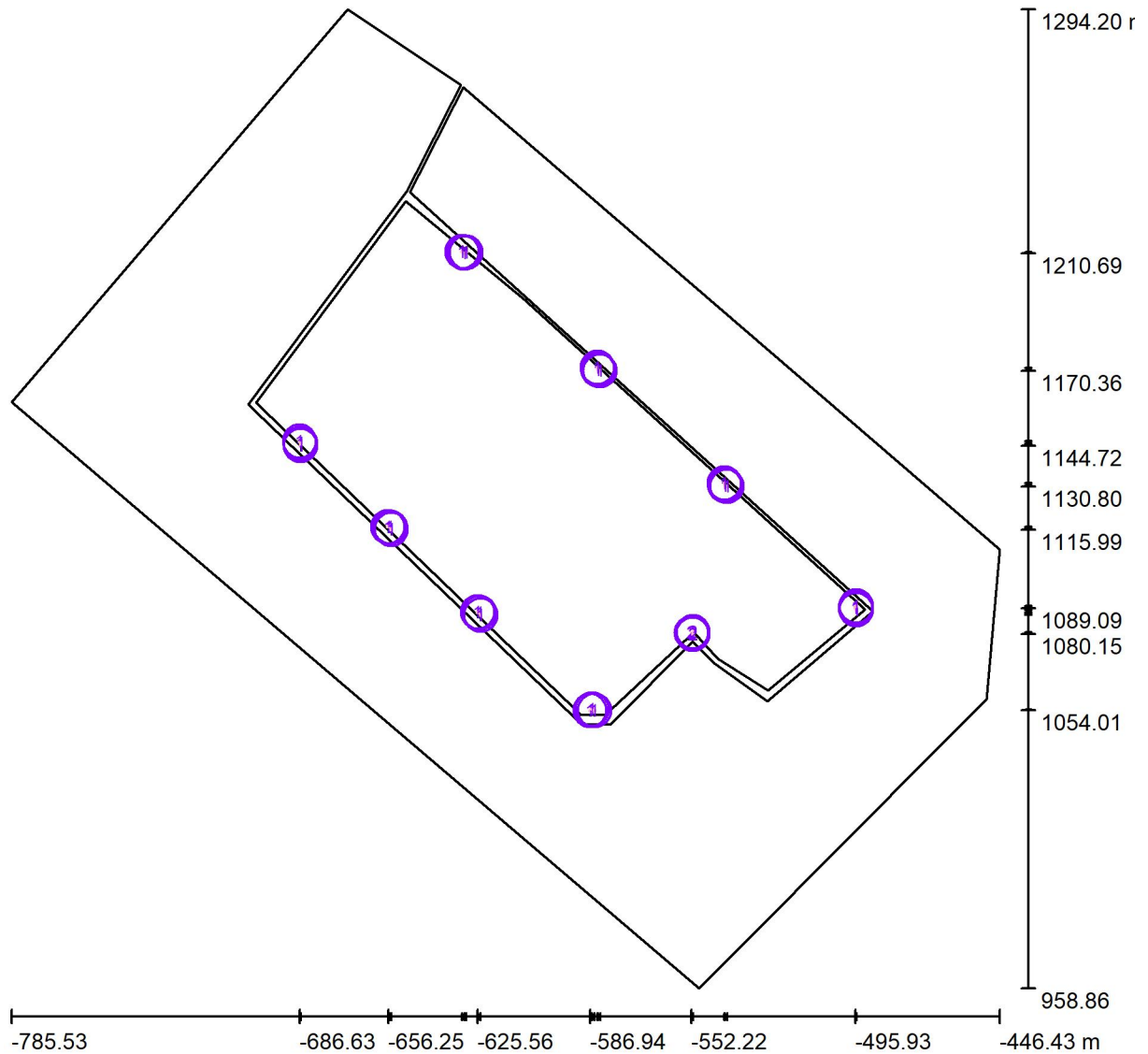
3 Pieces Thorn 93901122 AFP2 S 48L70 740 A6 NONE  
CL1 GY  
Article No.: 93901122  
Luminous flux (Luminaire): 15918 lm  
Luminous flux (Lamps): 15918 lm  
Luminaire Wattage: 101.0 W  
Luminaire classification according to CIE: 100  
CIE flux code: 37 73 97 100 100  
Fitting: 1 x LED 101 W (Correction Factor 0.950).





Operator  
Telephone  
Fax  
e-Mail

**Option 1 - 12m Columns with 6m at entrance / Luminaires (layout plan)**



Scale 1 : 2425

**Luminaire Parts List**

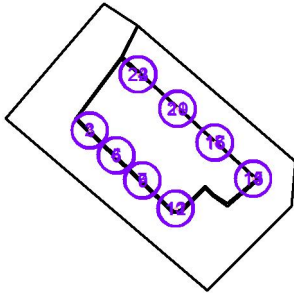
No.	Pieces	Designation
1	24	Thorn 92994629 AFP2 M 96L70 740 A6 NONE CL1 GY
2	3	Thorn 93901122 AFP2 S 48L70 740 A6 NONE CL1 GY

Operator  
Telephone  
Fax  
e-Mail

## Option 1 - 12m Columns with 6m at entrance / Luminaires (coordinates list)

### Thorn 92994629 AFP2 M 96L70 740 A6 NONE CL1 GY

31792 lm, 197.0 W, 1 x 1 x LED 197 W (Correction Factor 0.950).



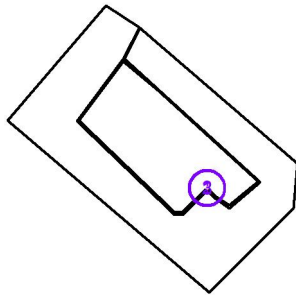
No.	Position [m]			Rotation [°]		
	X	Y	Z	X	Y	Z
1	-686.315	1144.716	12.000	0.0	10.3	-31.6
2	-686.633	1146.276	12.000	0.0	-19.9	49.7
3	-686.302	1145.506	12.000	0.0	-20.0	0.0
4	-656.253	1116.925	12.000	0.0	-20.0	90.0
5	-655.495	1116.763	12.000	0.0	-20.0	45.0
6	-655.165	1115.992	12.000	0.0	-20.0	0.0
7	-625.564	1087.657	12.000	0.0	-20.0	90.0
8	-624.806	1087.495	12.000	0.0	-20.0	45.0
9	-624.476	1086.724	12.000	0.0	-20.0	0.0
10	-586.943	1054.015	12.000	0.0	-20.0	133.9
11	-586.284	1054.424	12.000	0.0	-20.0	88.9
12	-585.511	1054.098	12.000	0.0	-20.0	43.9
13	-495.597	1088.512	12.000	0.0	-13.2	-139.3
14	-495.930	1089.089	12.000	0.0	-16.7	176.7
15	-495.693	1089.779	12.000	0.0	-18.9	160.1
16	-539.970	1130.803	12.000	0.0	-20.0	-100.0
17	-540.688	1131.095	12.000	0.0	-20.0	-145.0
18	-540.880	1131.911	12.000	0.0	-20.0	170.0
19	-583.529	1170.357	12.000	0.0	-20.0	-100.0
20	-584.247	1170.649	12.000	0.0	-20.0	-145.0
21	-584.439	1171.465	12.000	0.0	-20.0	170.0
22	-629.537	1210.947	12.000	0.0	-13.2	-51.8
23	-630.203	1210.688	12.000	0.0	-11.8	-91.7
24	-630.832	1211.095	12.000	0.0	-13.1	-132.5

Operator  
Telephone  
Fax  
e-Mail

### Option 1 - 12m Columns with 6m at entrance / Luminaires (coordinates list)

#### Thorn 93901122 AFP2 S 48L70 740 A6 NONE CL1 GY

15918 lm, 101.0 W, 1 x 1 x LED 101 W (Correction Factor 0.950).



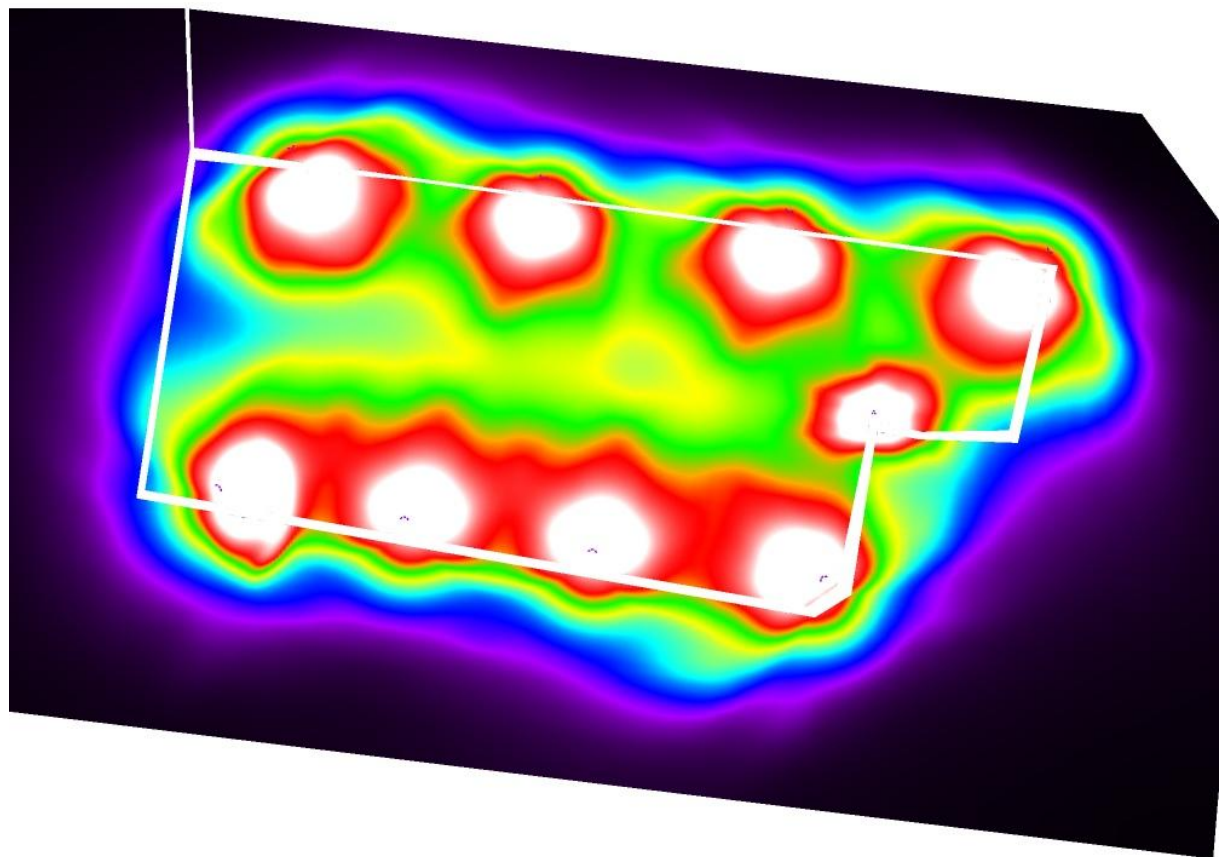
No.	Position [m]			Rotation [°]		
	X	Y	Z	X	Y	Z
1	-552.219	1080.593	6.000	0.0	-20.0	133.9
2	-551.630	1080.843	6.000	0.0	-5.4	14.9
3	-551.749	1080.153	6.000	0.0	-7.1	-24.9





Operator  
Telephone  
Fax  
e-Mail

### Option 1 - 12m Columns with 6m at entrance / False Colour Rendering

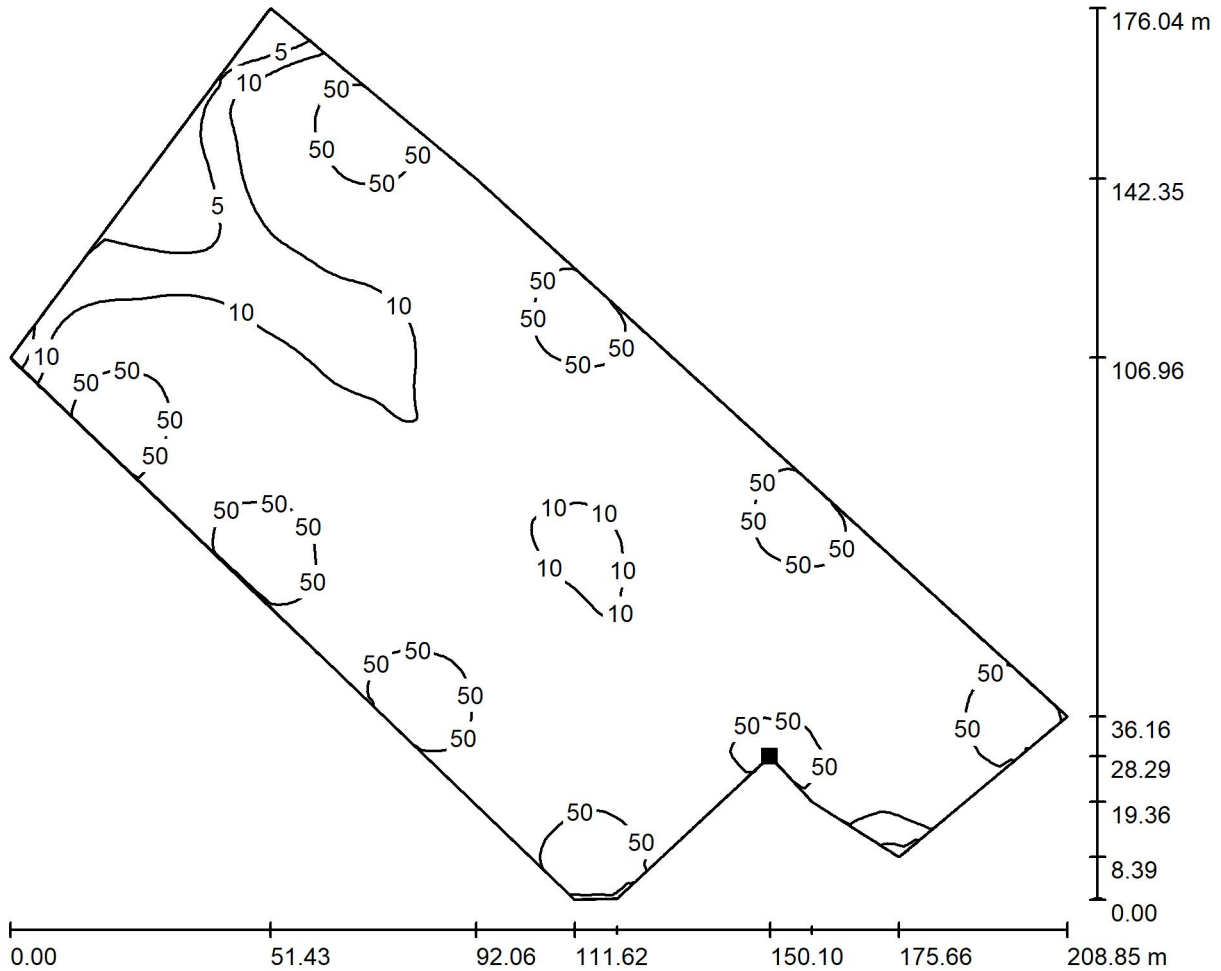


0 1 2 5 10 15 20 25 50 lx



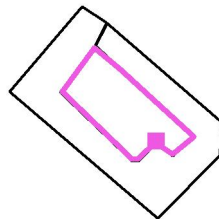
Operator  
Telephone  
Fax  
e-Mail

**Option 1 - 12m Columns with 6m at entrance / Ground Element 1 / Surface 1 / Isolines (E)**



Values in Lux, Scale 1 : 1494

Position of surface in external scene:  
Marked point:  
(-551.506 m, 1080.743 m, 0.000 m)



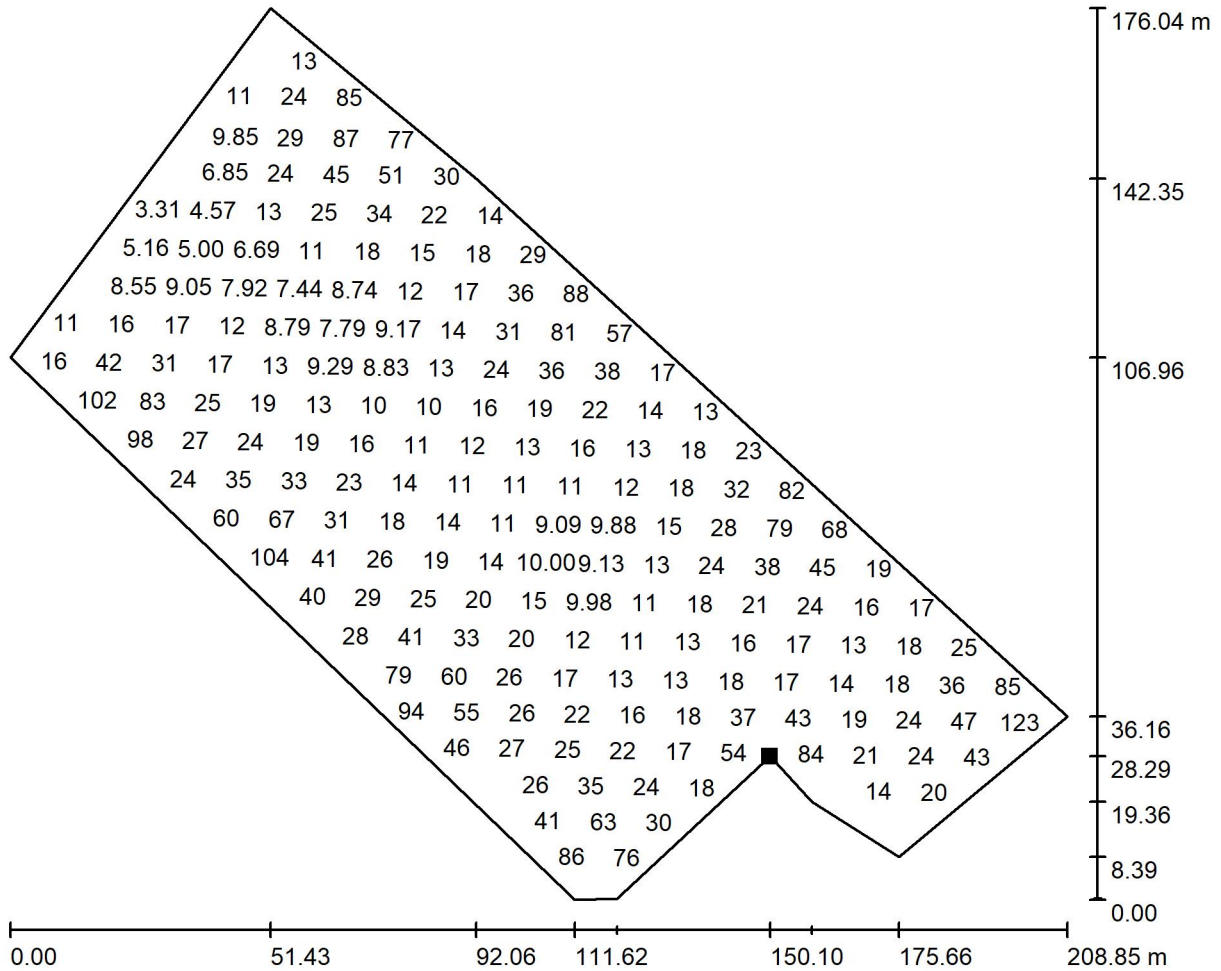
Grid: 128 x 128 Points

$E_{av}$ [lx]	$E_{min}$ [lx]	$E_{max}$ [lx]	u0	$E_{min} / E_{max}$
28	1.44	225	0.051	0.006



Operator  
Telephone  
Fax  
e-Mail

### Option 1 - 12m Columns with 6m at entrance / Ground Element 1 / Surface 1 / Value Chart (E)



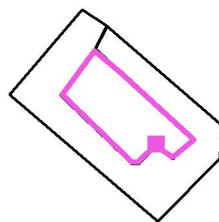
Values in Lux, Scale 1 : 1494

Not all calculated values could be displayed.

Position of surface in external scene:

Marked point:

(-551.506 m, 1080.743 m, 0.000 m)



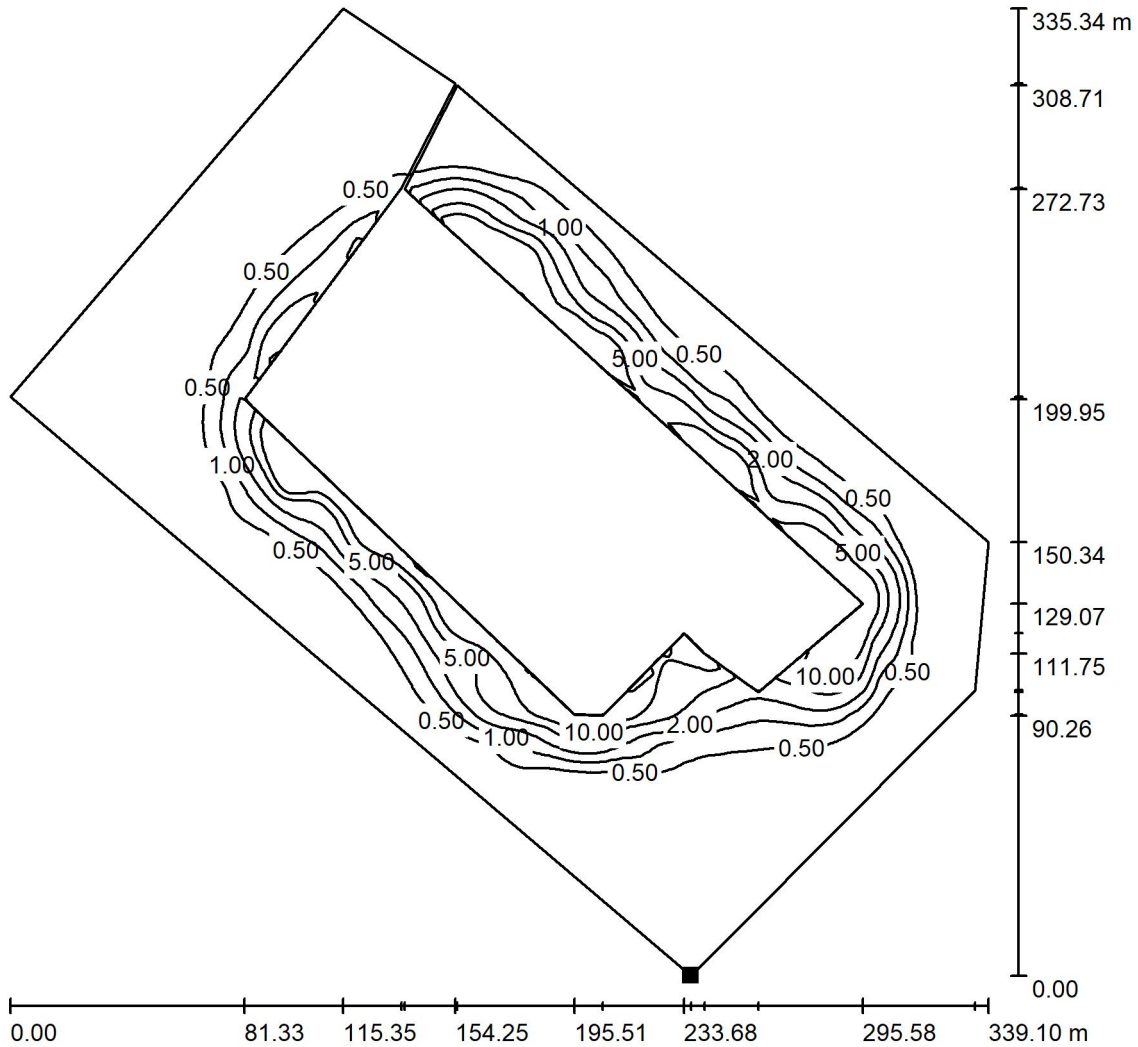
Grid: 128 x 128 Points

$E_{av}$ [lx]	$E_{min}$ [lx]	$E_{max}$ [lx]	$u_0$	$E_{min} / E_{max}$
28	1.44	225	0.051	0.006



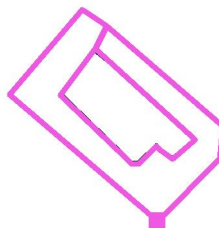
Operator  
Telephone  
Fax  
e-Mail

**Option 1 - 12m Columns with 6m at entrance / Spill Light / Surface 1 / Isolines (E)**



Values in Lux, Scale 1 : 2623

Position of surface in external scene:  
Marked point:  
(-549.603 m, 958.863 m, 0.000 m)

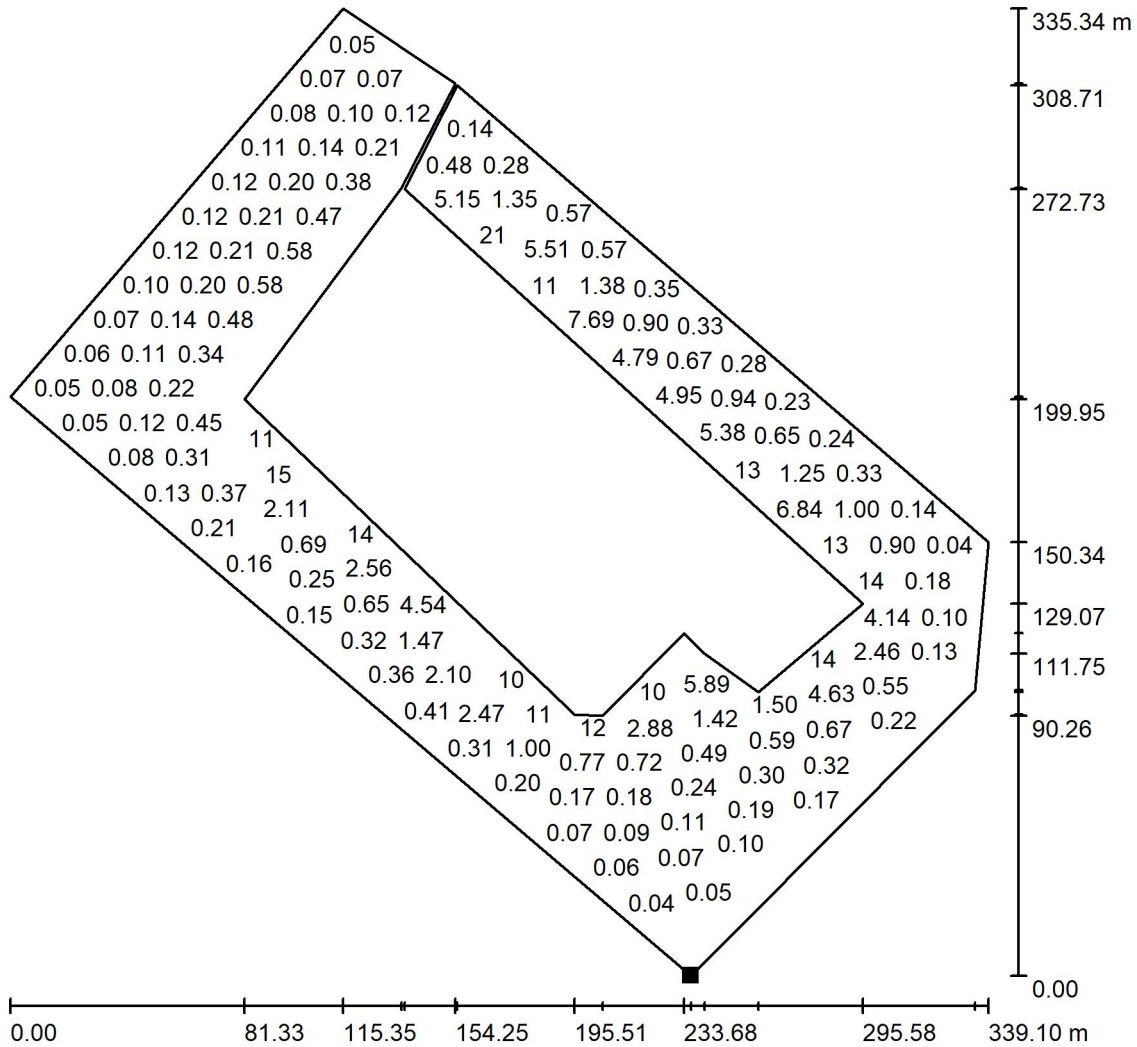


Grid: 128 x 128 Points

$E_{av}$ [lx]	$E_{min}$ [lx]	$E_{max}$ [lx]	u0	$E_{min} / E_{max}$
2.80	0.03	110	0.010	0.000

Operator  
Telephone  
Fax  
e-Mail

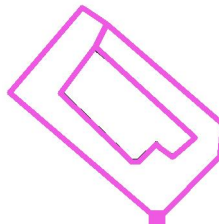
**Option 1 - 12m Columns with 6m at entrance / Spill Light / Surface 1 / Value Chart (E)**



Values in Lux, Scale 1 : 2623

Not all calculated values could be displayed.

Position of surface in external scene:  
Marked point:  
(-549.603 m, 958.863 m, 0.000 m)



Grid: 128 x 128 Points

$E_{av}$ [lx]	$E_{min}$ [lx]	$E_{max}$ [lx]	$u_0$	$E_{min} / E_{max}$
2.80	0.03	110	0.010	0.000