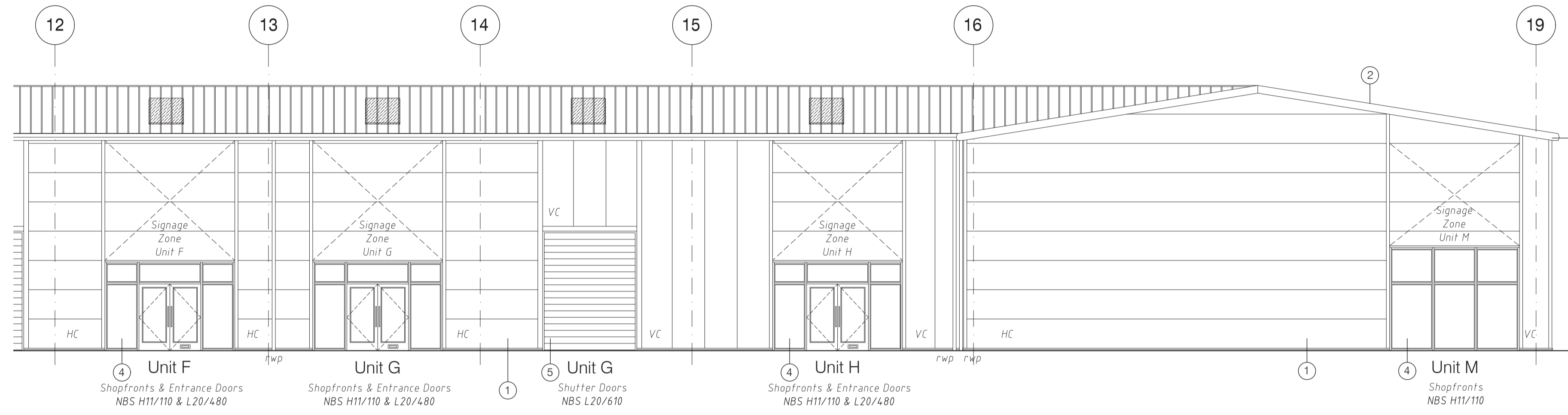
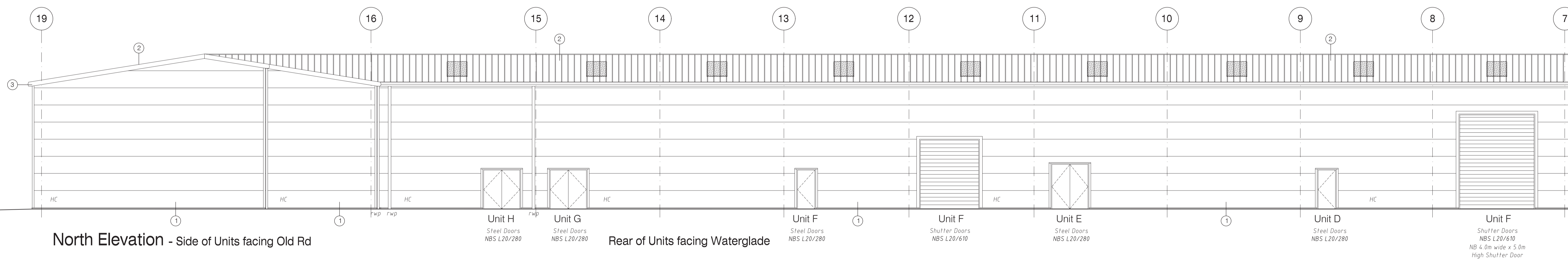


South Elevation - Units facing Waterglade



Continuation - South Elevation - Units facing Waterglade

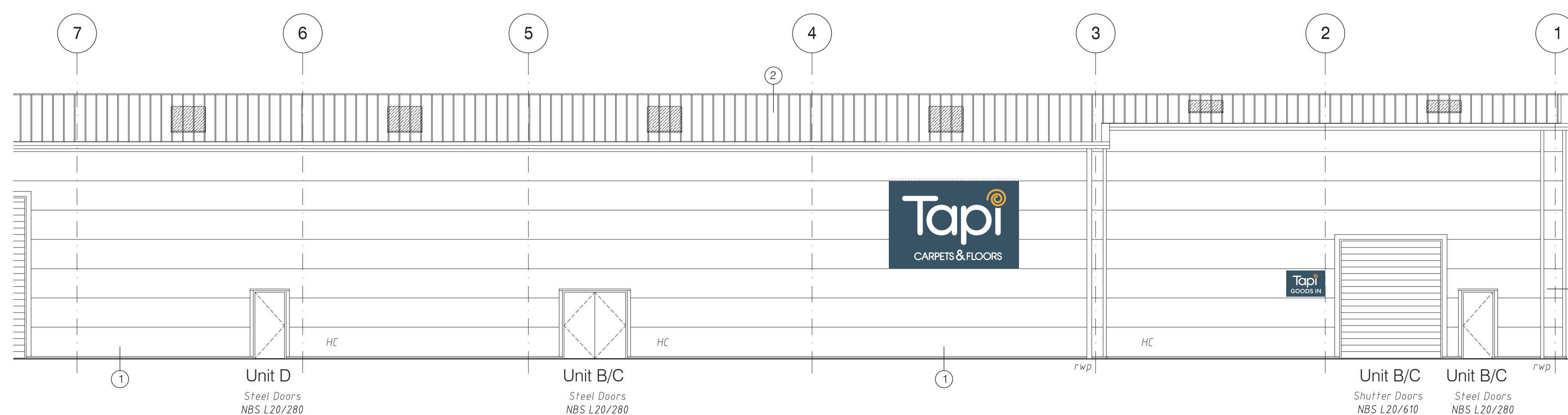
- Schedule of Proposed Materials:**
- ① Walls - Kingspan KS1000 MR Cladding or similar approved - Colour TBC - NBS H11/110
Feature vertical cladding/colour to areas indicated.
 - ② Roof - Kingspan KS1000 RW Trapezoidal roof sheeting/cladding or similar approved - Colour TBC - NBS H43/121
 - ③ Fascia/Verge/Mono Ridge Flashings - PPC standard metal flashings - Colour TBC
 - ④ Windows/Shopfronts & Entrance Doors - PPC Aluminium - Colour TBC - NBS H11/110 & L20/480
 - ⑤ External Shutters - Colour TBC - NBS L20/610
 - ⑥ Aluminium Signage Panels
- HC = Horizontal Cladding Panels
VC = Vertical Cladding Panels



North Elevation - Side of Units facing Old Rd

Rear of Units facing Waterglade

Unit F
Shutter Doors
NBS L20/610
NB 4.0m wide x 5.0m
High Shutter Door



Continuation - North Elevation - Side of Units facing Old Rd

Construction

Rev B	15.02.23	Shutters to South Elevation - Units D-G reduced in width to 2.9m Vertical cladding rationalised to 1m wide panels	DB
Rev A	20.09.22	'Construction Issue'	DB
rev.	date		drawn/chk'd

Gould Singleton Architects
Earls Way, Halesowen, West Midlands, B63 3HR
Tel: 0121 550 0359 Fax: 0121 550 8088
e-mail: info@goald-singleton.co.uk

hawkstone
PROPERTIES PLC
Proposed Retail & Trade Development
Old Gas Works Site
Old Road
Clacton On Sea

Proposed Elevations - Sheet 1 of 2
This drawing and the building works depicted are the copyright of the Architects and may not be reproduced except by written permission. This drawing must be read and checked against any specialist drawings and information provided. Do not scale prints. Figured dimensions only to be taken from this drawing.

number drawn
18-1704/503b
date
Feb 2022
checked
DB GSA
scales
1:100@A1