

Photo Viewpoint 1: View west from within site



Photo Viewpoint 2: View east from within site

**Photo Viewpoint 1**  
 Date & time of photo: 13 Jan 2023, 11:29  
 Camera make & model, & sensor format:  
 Canon EOS 6D, FFS  
 Horizontal Field of View: 87°  
 Direction of View: 250°, bearing from North

**Photo Viewpoint 2**  
 Date & time of photo: 13 Jan 2023, 12:08  
 Camera make & model, & sensor format:  
 Canon EOS 6D, FFS  
 Horizontal Field of View: 87°  
 Direction of View: 90°, bearing from North

Printing note: To give the correct viewing distance the sheet should be printed at a scale of 1:1 on A1. To be viewed at comfortable arms length.  
 Visualisation Type: Type 1  
 Projection: Cylindrical  
 Enlargement factor: 100%

This drawing is the property of FPCR Environment and Design Ltd and is issued on the condition it is not reproduced, retained or disclosed to any unauthorised person, either wholly or in part without written consent of FPCR Environment and Design Ltd. Ordnance Survey material - Crown Copyright. All rights reserved. Licence Number: 100019980 (Centremapslive.com)

client  
 Wain Estates  
 project  
 Wilderness Park  
 Great Barr, Birmingham  
 drawing title  
 PHOTO VIEWPOINTS 1 & 2  
 drawn  
 KAD  
 issue date  
 August 2023  
 drawing / figure number  
**Figure 8**

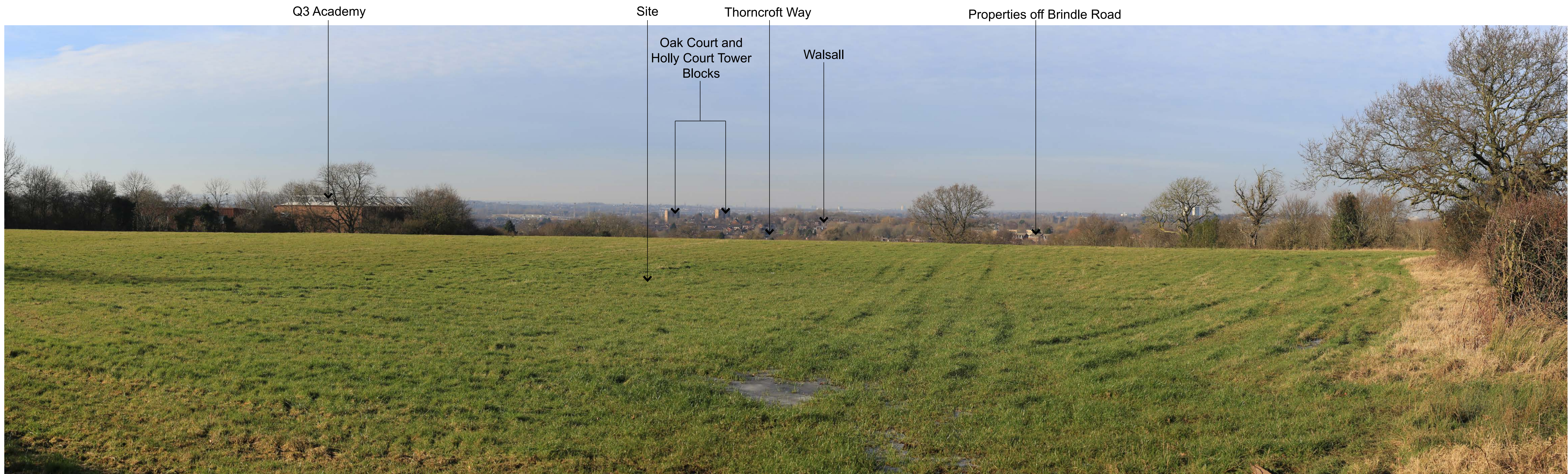


Photo Viewpoint 3: View west from Wilderness Lane



Photo Viewpoint 4: View North from Wilderness Lane

**Photo Viewpoint 3**  
 Date & time of photo: 23 Jan 2023, 12:25  
 Camera make & model, & sensor format:  
 Canon EOS 6D, FFS  
 Horizontal Field of View: 87°  
 Direction of View: 295°, bearing from North

**Photo Viewpoint 4**  
 Date & time of photo: 13 Jan 2023, 12:30  
 Camera make & model, & sensor format:  
 Canon EOS 6D, FFS  
 Horizontal Field of View: 82°  
 Direction of View: 350°, bearing from North

Printing note: To give the correct viewing distance the sheet should be printed at a scale of 1:1 on A1. To be viewed at comfortable arms length.  
 Visualisation Type: Type 1  
 Projection: Cylindrical  
 Enlargement factor: 100%

This drawing is the property of FPCR Environment and Design Ltd and is issued on the condition it is not reproduced, retained or disclosed to any unauthorised person, either wholly or in part without written consent of FPCR Environment and Design Ltd. Ordnance Survey material - Crown Copyright. All rights reserved. Licence Number: 100019980 (Centremapslive.com)



Photo Viewpoint 5: View north from footpath north of Q3 Academy



Photo Viewpoint 6: View north-east from Hill Farm Bridge

**Photo Viewpoint 5**  
 Date & time of photo: 23 Jan 2023, 12:28  
 Camera make & model, & sensor format:  
 Canon EOS 6D, FFS  
 Horizontal Field of View: 80°  
 Direction of View: 20°, bearing from North

**Photo Viewpoint 6**  
 Date & time of photo: 13 Jan 2023, 12:45  
 Camera make & model, & sensor format:  
 Canon EOS 6D, FFS  
 Horizontal Field of View: 87°  
 Direction of View: 60°, bearing from North

Printing note: To give the correct viewing distance the sheet should be printed at a scale of 1:1 on A1. To be viewed at comfortable arms length.  
 Visualisation Type: Type 1  
 Projection: Cylindrical  
 Enlargement factor: 100%

This drawing is the property of FPCR Environment and Design Ltd and is issued on the condition it is not reproduced, retained or disclosed to any unauthorised person, either wholly or in part without written consent of FPCR Environment and Design Ltd. Ordnance Survey material - Crown Copyright. All rights reserved. Licence Number: 100019980 (Centremapslive.com)



Photo Viewpoint 7: View east from footpath near to Beacon Way Long Distance Path



Photo Viewpoint 8: View east from Beacon Way Long Distance Path

**Photo Viewpoint 1**  
 Date & time of photo: 13 Jan 2021, 12:50  
 Camera make & model, & sensor format:  
 Canon EOS 6D, FFS  
 Horizontal Field of View: 87°  
 Direction of View: 55°, bearing from North

**Photo Viewpoint 2**  
 Date & time of photo: 13 Jan 2023, 13:01  
 Camera make & model, & sensor format:  
 Canon EOS 6D, FFS  
 Horizontal Field of View: 87°  
 Direction of View: 125°, bearing from North

Printing note: To give the correct viewing distance the sheet should be printed at a scale of 1:1 on A1. To be viewed at comfortable arms length.  
 Visualisation Type: Type 1  
 Projection: Cylindrical  
 Enlargement factor: 100%

This drawing is the property of FPCR Environment and Design Ltd and is issued on the condition it is not reproduced, retained or disclosed to any unauthorised person, either wholly or in part without written consent of FPCR Environment and Design Ltd. Ordnance Survey material - Crown Copyright. All rights reserved. Licence Number: 100019980 (Centremapsive.com)



Photo Viewpoint 9: View south-east from A34 Birmingham Road

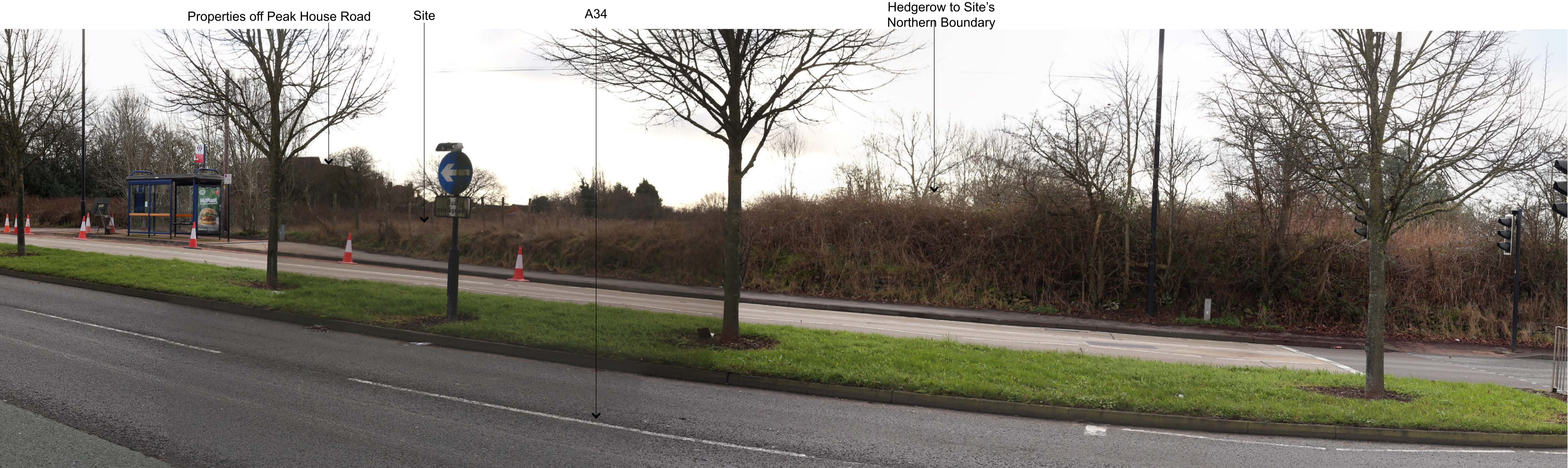


Photo Viewpoint 10: View south from the A34 Birmingham Road

**Photo Viewpoint 9**  
 Date & time of photo: 13 Jan 2023, 13:17  
 Camera make & model, & sensor format:  
 Canon EOS 6D, FFS  
 Horizontal Field of View: 87°  
 Direction of View: 135°, bearing from North

**Photo Viewpoint 10**  
 Date & time of photo: 13 Jan 2023, 13:24  
 Camera make & model, & sensor format:  
 Canon EOS 6D, FFS  
 Horizontal Field of View: 87°  
 Direction of View: 175°, bearing from North

Printing note: To give the correct viewing distance the sheet should be printed at a scale of 1:1 on A1. To be viewed at comfortable arms length.  
 Visualisation Type: Type 1  
 Projection: Cylindrical  
 Enlargement factor: 100%

This drawing is the property of FPCR Environment and Design Ltd and is issued on the condition it is not reproduced, retained or disclosed to any unauthorised person, either wholly or in part without written consent of FPCR Environment and Design Ltd. Ordnance Survey material - Crown Copyright. All rights reserved. Licence Number: 100019980 (Centremapsive.com)



Photo Viewpoint 11: View west from the A34 Birmingham Road



Photo Viewpoint 12: View east from Thorncroft Way

**Photo Viewpoint 11**  
 Date & time of photo: 13 Jan 2023, 13:26  
 Camera make & model, & sensor format:  
 Canon EOS 6D, FFS  
 Horizontal Field of View: 76°  
 Direction of View: 275°, bearing from North

**Photo Viewpoint 12**  
 Date & time of photo: 23 Jan 2023, 12:46  
 Camera make & model, & sensor format:  
 Canon EOS 6D, FFS  
 Horizontal Field of View: 76°  
 Direction of View: 120°, bearing from North

Printing note: To give the correct viewing distance the sheet should be printed at a scale of 1:1 on A1. To be viewed at comfortable arms length.  
 Visualisation Type: Type 1  
 Projection: Cylindrical  
 Enlargement factor: 100%

This drawing is the property of FPCR Environment and Design Ltd and is issued on the condition it is not reproduced, retained or disclosed to any unauthorised person, either wholly or in part without written consent of FPCR Environment and Design Ltd. Ordnance Survey material - Crown Copyright. All rights reserved. Licence Number: 100019980 (Centremapslive.com)



Photo Viewpoint 13: View south-east from Walstead Road



Photo Viewpoint 14: View west from Barr Beacon Nature Reserve

**Photo Viewpoint 13**  
 Date & time of photo: 13 Jan 2023, 15:43  
 Camera make & model, & sensor format:  
 Canon EOS 6D, FFS  
 Horizontal Field of View: 87°  
 Direction of View: 140°, bearing from North

**Photo Viewpoint 14**  
 Date & time of photo: 23 Jan 2023, 12:03  
 Camera make & model, & sensor format:  
 Canon EOS 6D, FFS  
 Horizontal Field of View: 87°  
 Direction of View: 240°, bearing from North

Printing note: To give the correct viewing distance the sheet should be printed at a scale of 1:1 on A1. To be viewed at comfortable arms length.  
 Visualisation Type: Type 1  
 Projection: Cylindrical  
 Enlargement factor: 100%

This drawing is the property of FPCR Environment and Design Ltd and is issued on the condition it is not reproduced, retained or disclosed to any unauthorised person, either wholly or in part without written consent of FPCR Environment and Design Ltd. Ordnance Survey material - Crown Copyright. All rights reserved. Licence Number: 100019980 (Centremapslive.com)