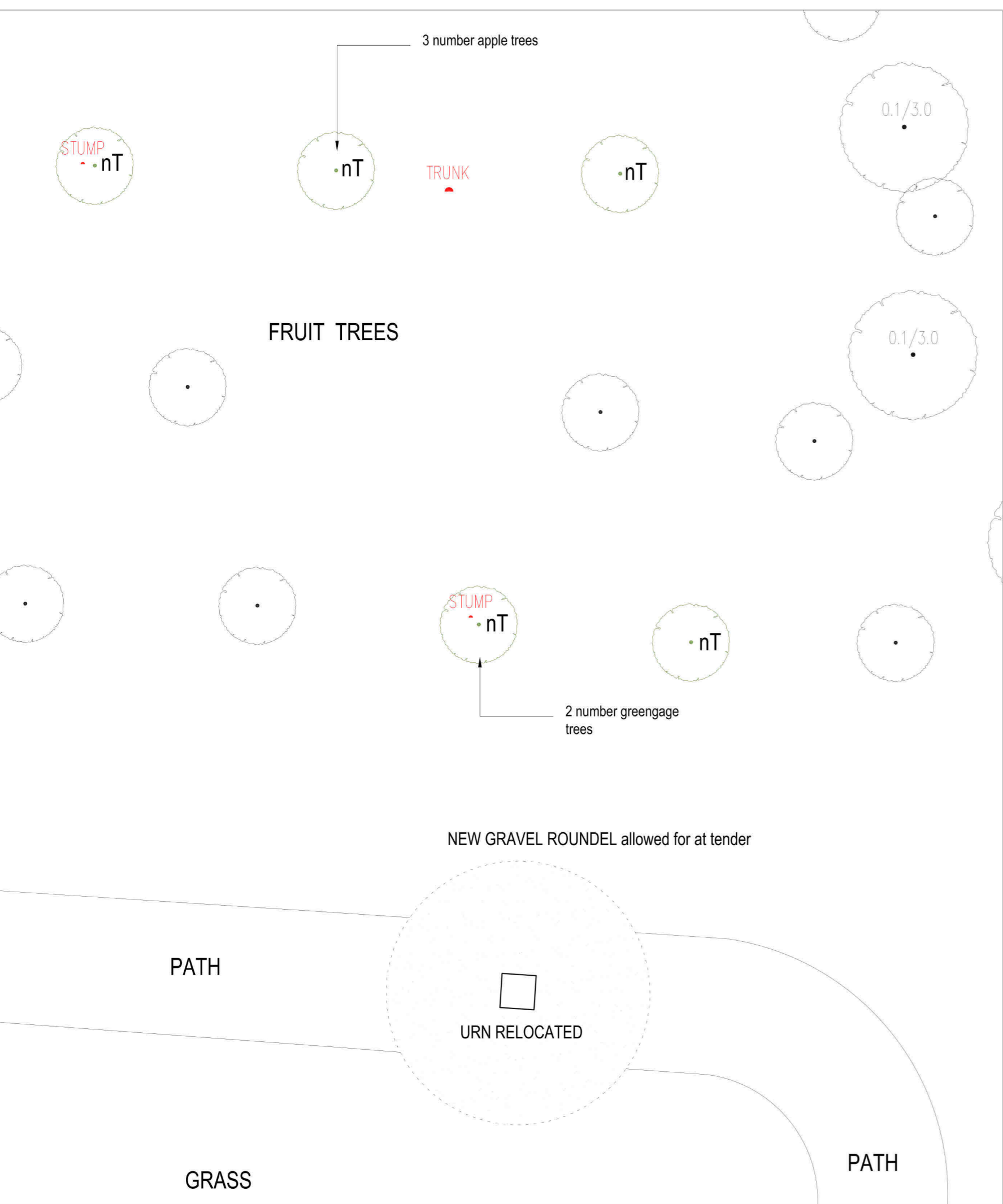
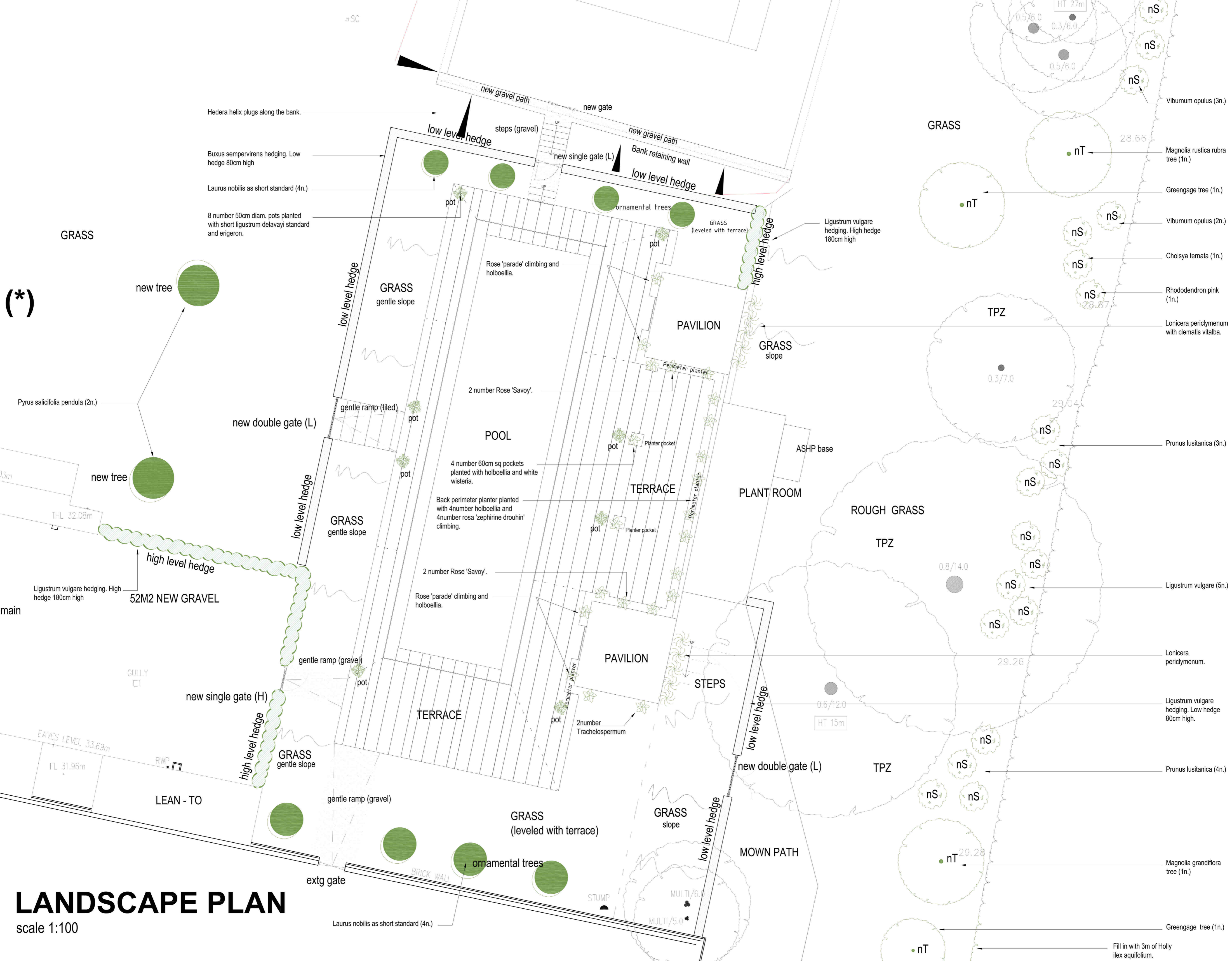


NOTES
 1. ALL DIMENSIONS TO BE CHECKED ON SITE AND THE ARCHITECT/CLIENT MADE AWARE OF ANY DISCREPANCIES AND ADJUSTMENTS REQUIRED.
 2. DO NOT SCALE OFF DRAWING
 3. ALL CONSTRUCTION MUST COMPLY TO THE CURRENT BUILDING REGULATIONS AND BRITISH STANDARDS.
 4. THE DIMENSIONS SHOWN ARE APPROXIMATE ONLY AND ALL SETTING OUT IS THE RESPONSIBILITY OF THE CONTRACTOR. THIS IS AN EXISTING BUILDING AND DIMENSIONS VARY THEREFORE WE RECOMMEND YOU SET OUT THE WORKS AS PER THE DIMENSIONS AND ADJUST AS REQUIRED TO MAKE THEM CORRECT FOR THE EXISTING BUILDING. THIS MUST BE DONE PRIOR TO CONSTRUCTION.



WALLED GARDEN (NOT SURVEYED)

POOL AREA PLANTING GIFFORDS HALL

Hedging
 Buxus sempervirens hedging 53.5 m @ 0.6 - 0.8m high
 Ligustrum vulgare hedging 18 m @ 1.8m high
 Ilex aquifolium hedging to fill in gap 5m @ 3m high

Topiary
 8 Domed Laurus nobilis 1 m diam 3 m high
 In 8 x 50 cm diam pots 8 quarter standards Ligustrum delavayi

Bank to Tennis court
 Hedera helix plus to cover the bank approx 16.5m long and 1-1.5 m deep - at a grid of 30cm spacing

On the pergola between the pavilions
 8 x Holboellia coriacea on 2m canes
 8 x Wisteria sinensis f. alba on 2.4 m canes
 4 x Rosa 'Zepherine Drouhin' Climbing on 2 m canes

On front faces of the pavilions facing pool
 4 x holboellia coriacea on 2 m canes
 4 x Rosa 'Paradise' climbing on 2 m canes

On N face of N pavilion
 2 x Hydrangea petiolaris on 2m canes

Internal faces of pavilions
 4 x Rosa 'Savoy Hotel' 5 litre pots

S Pavilion S face
 2 x Trachelospermum jasminoides on 2 m canes

Rear face of pavilions
 2 x Lonicera periclymenum 2 m canes
 2 x Clematis vitalba 2 m canes

Area to rear of pavilions
 5 x Ligustrum vulgare 5 litre pots
 5 Viburnum opulus 5 litre pots
 2 Greengage full standards 15 litre pots
 1 x Magnolia x soulangeana rustica rubra 15 litre pot
 1 x Choisyia ternata 15 litre pot
 1 x Rhododendron 'Anna Rose Whitney' 15 litre pot
 7 x Prunus lusitanica 10 litre pots
 1 x Magnolia Grandiflora 15 litre pot
 2 x Greengage standards 8/10 girth

In front of pool by greenhouse
 2 x Prunus salicifolia 'pendula' clear stem standards 8/10 girth

Orchard
 2 x Greengage 8/10 girth
 4 x Apples to replace Brogdale grafts of Giffords varieties

REV

REV	DATE	BY	CHECKED
1	18.08.23	ST	ST
2	24.11.23	MC	MC

LANDSCAPE SCHEME PLAN WORKING DRAWINGS
 for GIFFORDS HALL
 STOKES-BY-NAYLAND
 COLCHESTER
 CO6 4SZ

AY PILSBURY THOMAS ARCHITECTS
 HONEYLANE, RADWINTER, SAFFRON WALDEN, ESSEX, CB10 2JL

© The copyright of this drawing belongs to Kay Pilsbury Thomas