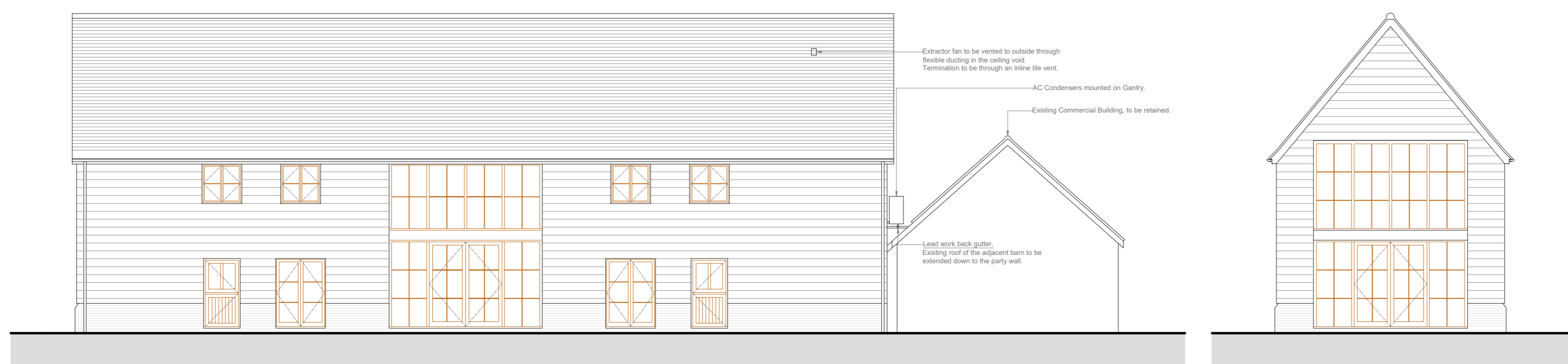
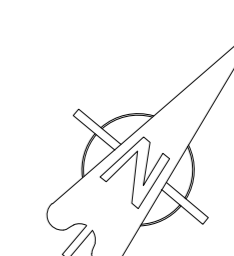


Revisions

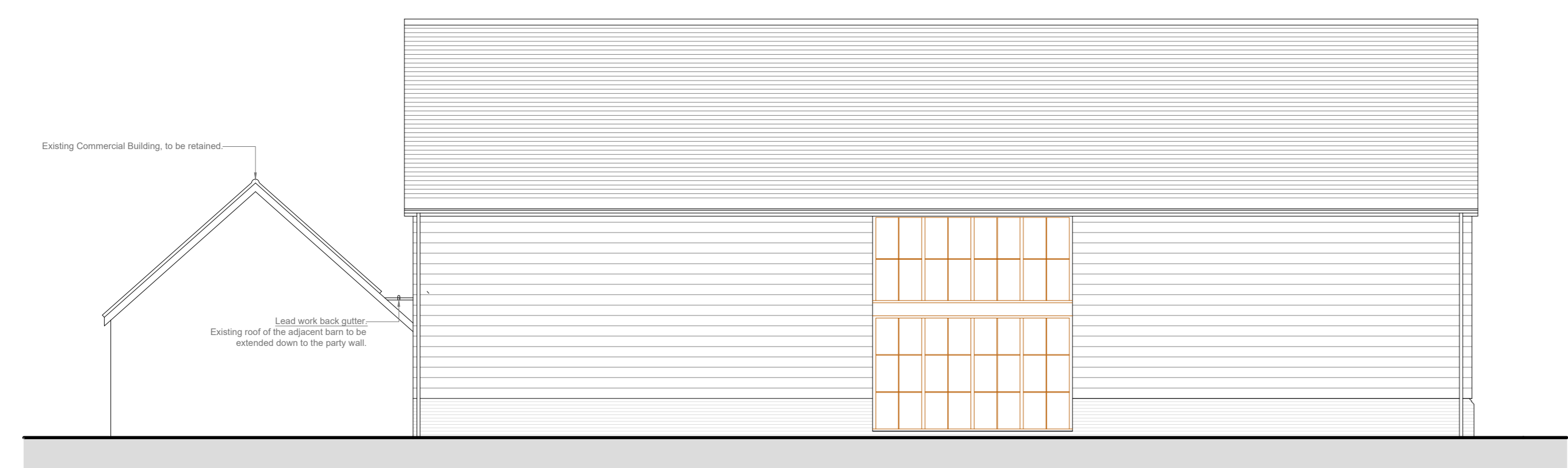
Rev	Date	Description	By
1	17.05.2023	Rev amended in sub-structure plan with floor levels added	MJP
2	17.05.2023	Proposed fire alarm added to drawing	MJP
3	17.05.2023	Northwestern elevation added to drawing	MJP

- NOTES:
1. This drawing remains the copyright of BCM
 2. All dimensions and levels are to be checked on site prior to works commencing.
 3. Do not scale from this drawing. Use figured dimensions only.
 4. Any discrepancies found are to be reported to the Project Manager immediately.
 5. This drawing is to be read in conjunction with sub-consultants and specialists drawings.
 6. CAD File name: 10505_001de Office Building Regulations.dwg
 7. If BCM logo is not in colour this is not an original drawing



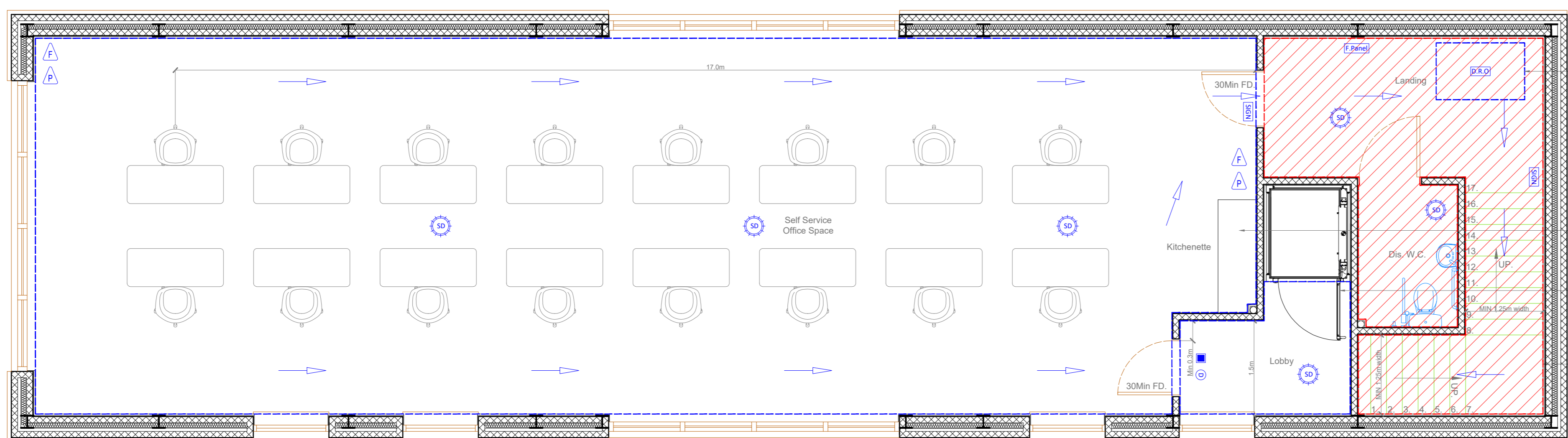
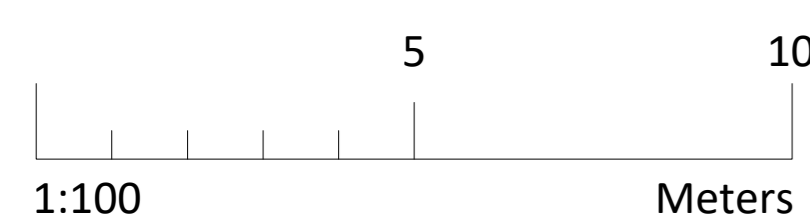
PROPOSED SOUTH EAST ELEVATION

PROPOSED SOUTH WEST ELEVATION



PROPOSED NORTH WEST ELEVATION

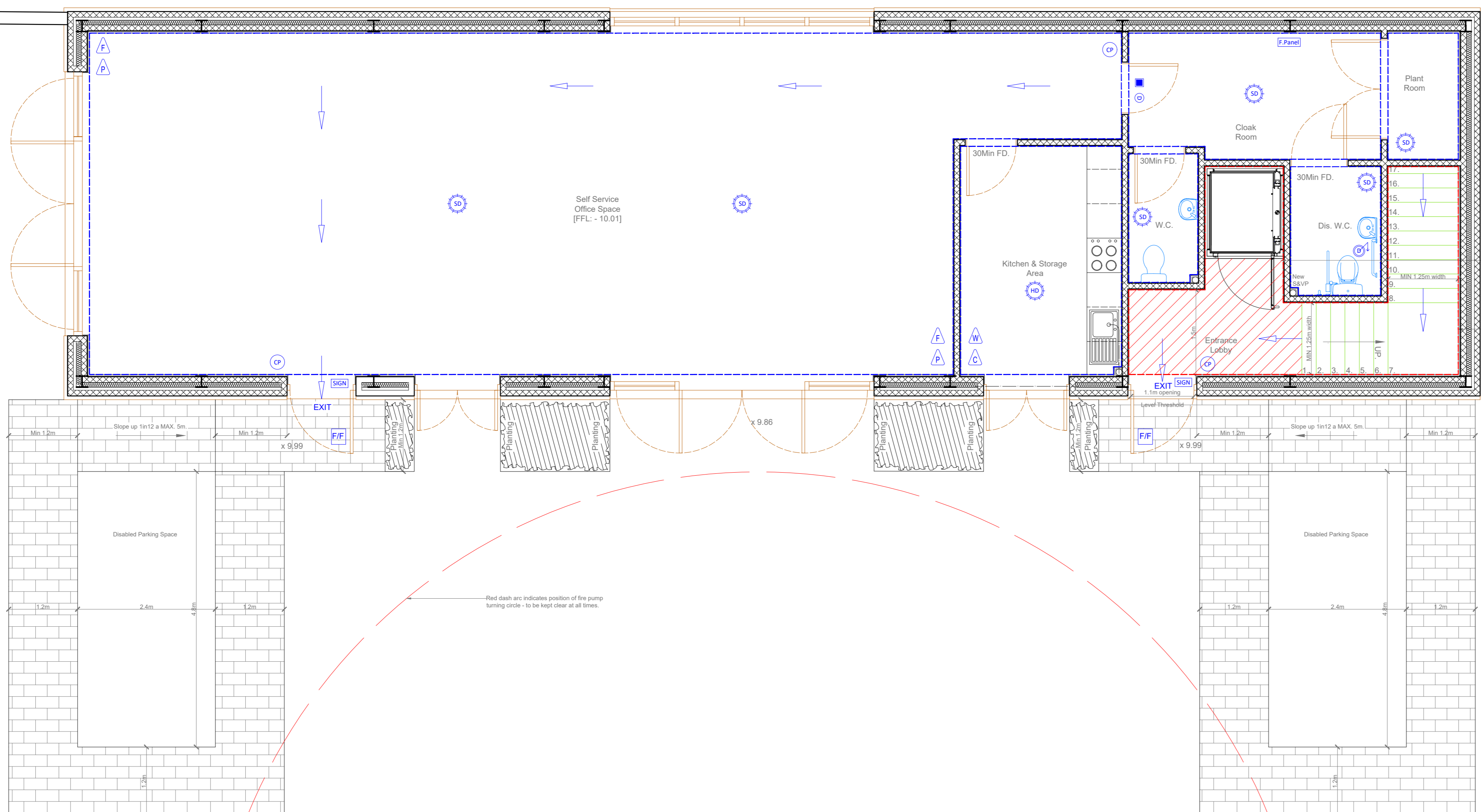
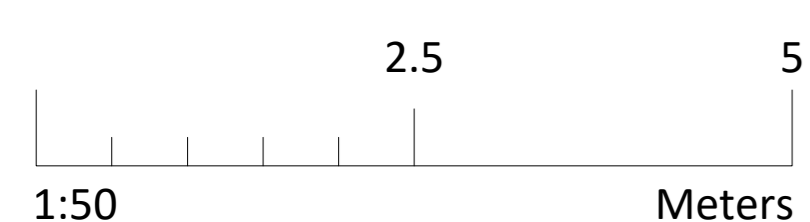
PROPOSED NORTH EAST ELEVATION



PROPOSED FIRST FLOOR PLAN

- DRAWING KEY**
- Blue Arrow indicates intended travel path.
 - Break glass call point.
 - Heat detector with Beacon.
 - Smoke detector with Beacon.
 - Fire panel at 1400mm above FFL.
 - Disabled refuge enclosure.
 - Single zone call controller (Disabled WC or shower Alarm).
 - Over door light & sounder.
 - Approved ADN/ES/DA/WS/ET Encore LED Exit Sign - Emergency Exit Lighting.
 - 30 Minute fire partition.
 - 60 minute compartmentation.
 - 15mm fire grade plasterboard ceiling fixed @2500 above FFL.
 - 30 Minute fire door set out in the Fire Safety (England) Regulations 2022: fire door gasket, 30 minute fire resistance self closing fire door with intumescent seals.
 - Fire extinguisher, foam type, min. size 9 litres.
 - Fire extinguisher, powder type, min. size 9 litres.
 - Fire extinguisher, water type, min. size 9 litres.
 - Fire extinguisher, carbon dioxide type, min. size 9 litres.
 - Emergency Light.
 - Free from Stairwells Doors. These requiring headings to be as per Building Regulations notes.

- DRAWING KEY**
- Blue Arrow indicates intended travel path.
 - Break glass call point.
 - Heat detector with Beacon.
 - Smoke detector with Beacon.
 - Fire panel at 1400mm above FFL.
 - Disabled refuge enclosure.
 - Single zone call controller (Disabled WC or shower Alarm).
 - Over door light & sounder.
 - Approved ADN/ES/DA/WS/ET Encore LED Exit Sign - Emergency Exit Lighting.
 - 30 Minute fire partition.
 - 60 minute compartmentation.
 - 15mm fire grade plasterboard ceiling fixed @2500 above FFL.
 - 30 Minute fire door set out in the Fire Safety (England) Regulations 2022: fire door gasket, 30 minute fire resistance self closing fire door with intumescent seals.
 - Fire extinguisher, foam type, min. size 9 litres.
 - Fire extinguisher, powder type, min. size 9 litres.
 - Fire extinguisher, water type, min. size 9 litres.
 - Fire extinguisher, carbon dioxide type, min. size 9 litres.
 - Emergency Light.
 - Free from Stairwells Doors. These requiring headings to be as per Building Regulations notes.



PROPOSED GROUND FLOOR PLAN

BUILDING REGULATIONS

Client	Avon Tyrrell Farms LTD.	
Project Name	Corner Barn, Court Farm.	
Drawing Title	Proposed Ground and First Floor Plan-Fire Strategy/Part M.	
Drawn By	MJP	
Scale	1:50 & 1:100	Sheet Size A0
Drawing No.	10505.006	Revision C

BCM
The Old Dairy
Winchester Hill
Sutton Scotney
Near Winchester
Hampshire
SO21 3NZ
t 01962 763 900
www.bcm.co.uk

