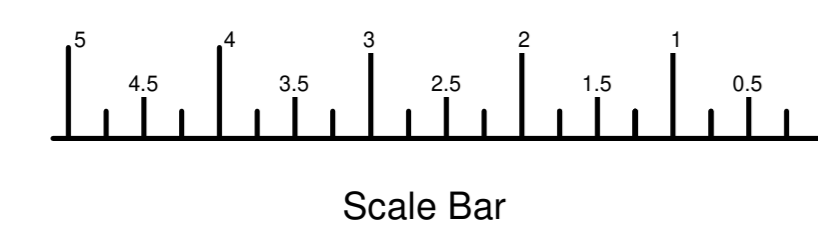
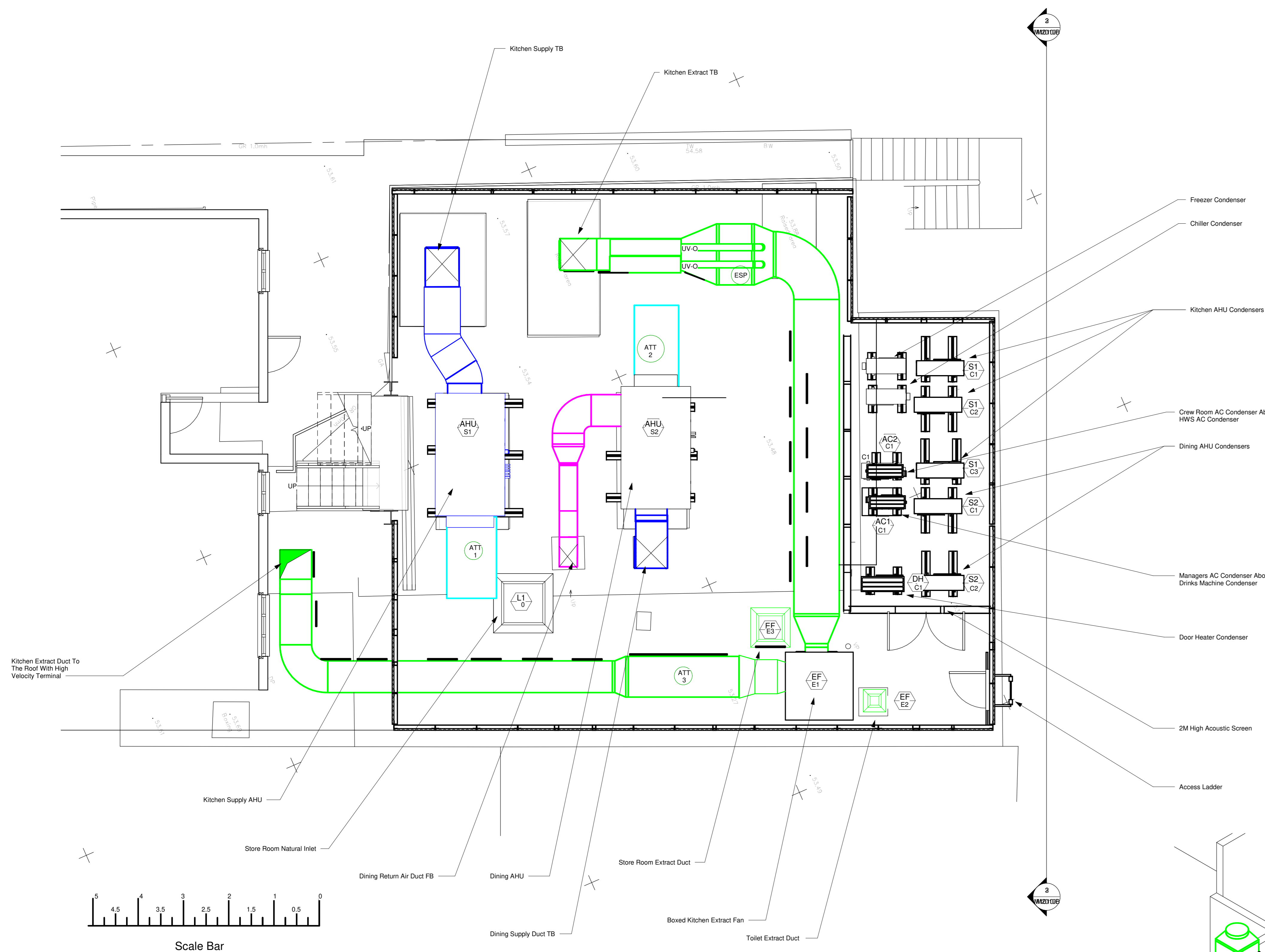
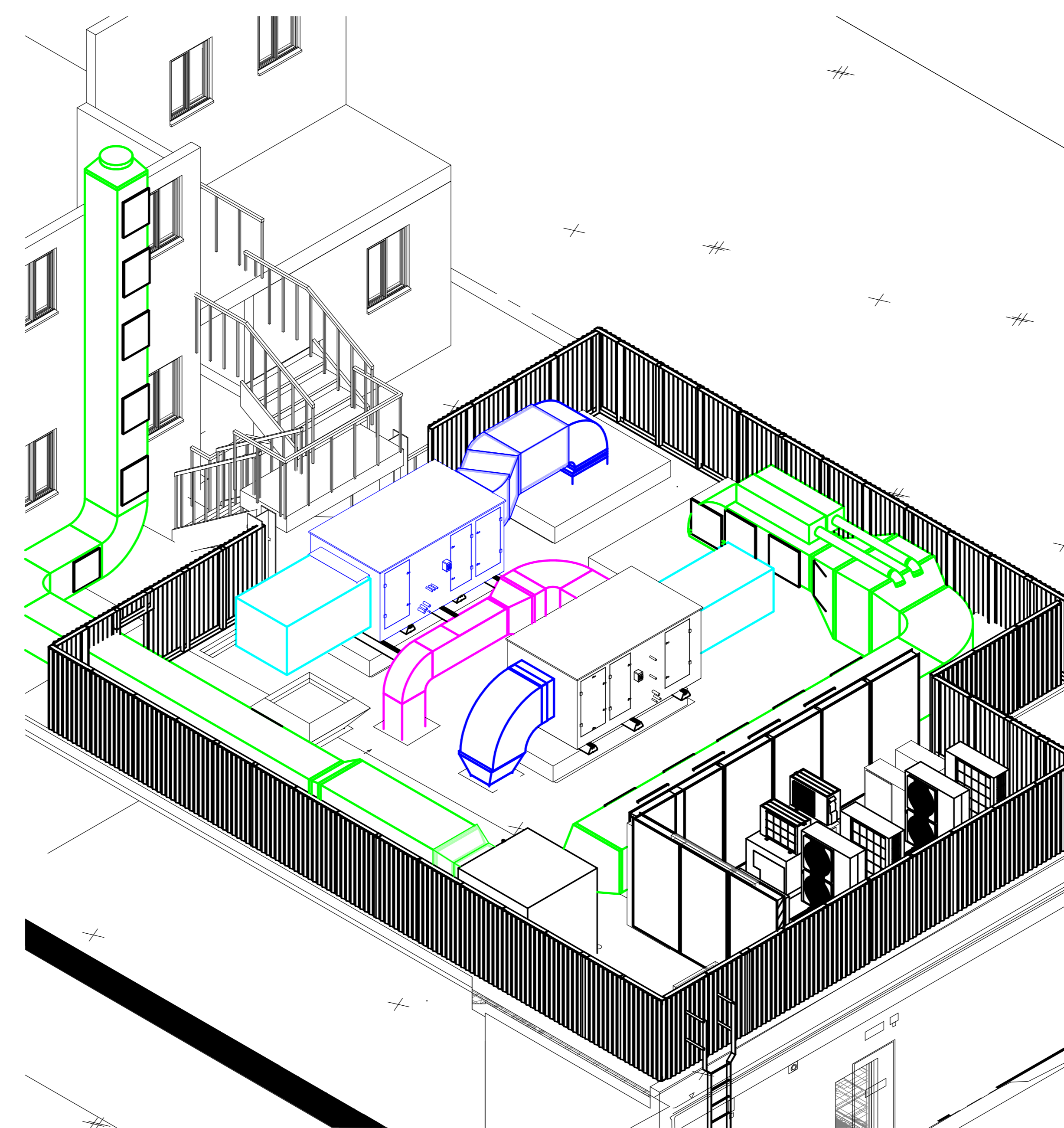
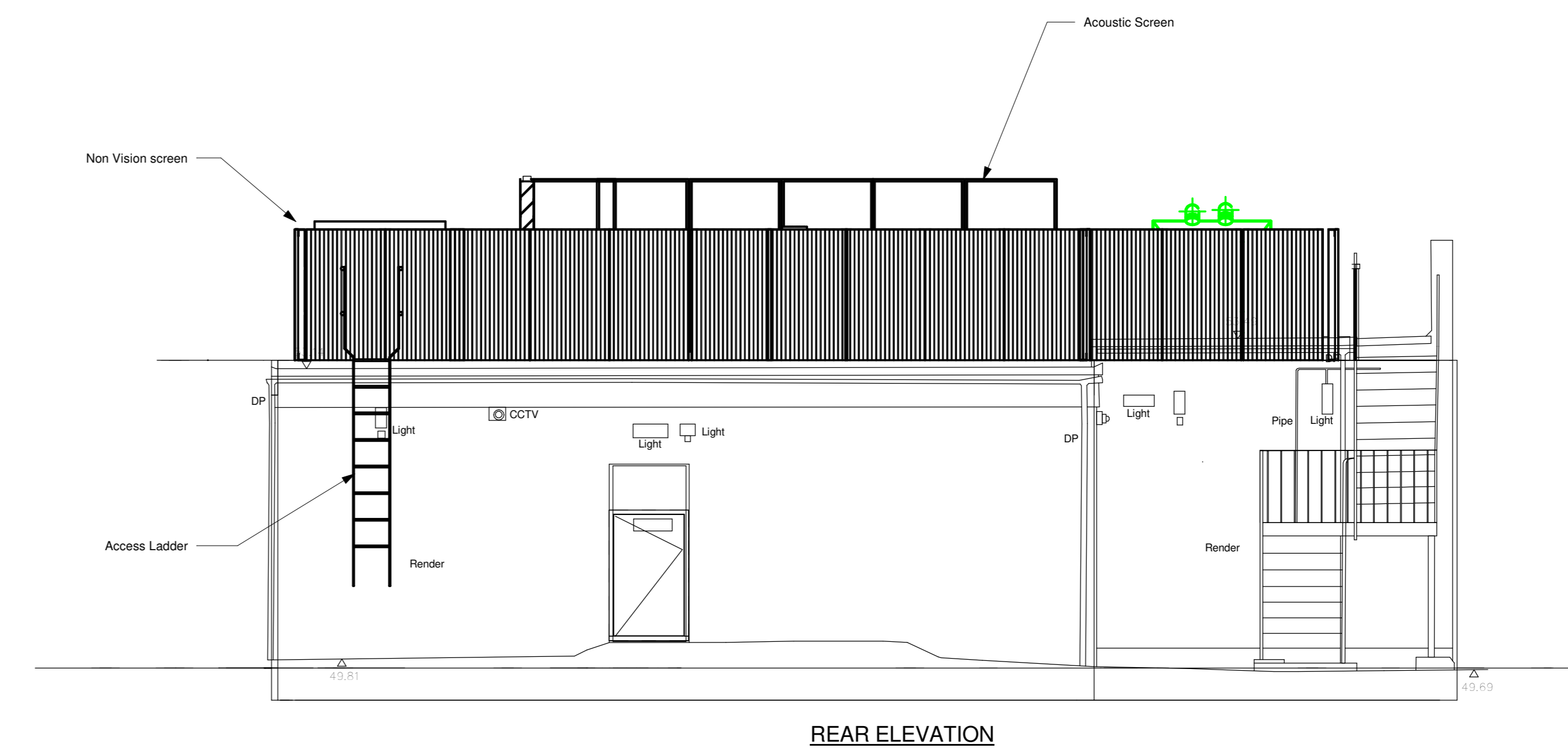


ALL DIMENSIONS ARE APPROXIMATE & MUST BE CHECKED.  
THIS DRAWING MUST BE READ IN CONJUNCTION WITH ALL ASSOCIATED RELEVANT DRAWINGS & DOCUMENTATION.  
BEFORE WORKS START ON SITE CDM PARTNERSHIP MUST BE INFORMED OF ANY VARIATIONS OR DISCREPANCIES ON SITE.

1. Comply with McDonald's Standard Specification for HVAC Services.
2. Fit stainless steel drain trays under AHU condensers arranged to fall to 20mm drain socket & copper drain pipes routed to discharge over local gully. Where no gully is present, fit pipe trace heating & insulation and high capacity gutter trace heating within trays incl control & connection to electrical supply provided by electrical contractor.
3. Fit 22mm copper trapped AHU drains to discharge over local gully. Minimum 150mm drop-in & 20mm from water depth.
4. Duct heights for guidance only. Contractor to check for site co-ordination.
5. HVAC contractor to verify sizes of refrigeration pipework prior to installation.
6. Use insulated supply flexing ductwork.
7. Fit M10 through bolted opposing flange plate to sandwich partitions to flanged frame type fire dampers (or demonstrate compliance with manufacturer's specific fitting instructions).
8. Fit fire vision screens to un ducted return air transfer gills.
9. Maintain existing fire compartment barriers.
10. Ensure ceiling access is provided to all duct cleaning access panels including any not identified on drawing.



AMENDMENTS		
REF	DATE	DESCRIPTION



10A ALBION STREET, DUNSTABLE, BEDS LU6 1SA  
Tel : 01582 472457 Fax : 01582 472458  
Email : office@cdmpartnership.co.uk

McDONALD'S RESTAURANTS  
MILL HILL BROADWAY  
LONDON

HVAC LAYOUT  
ROOF PLAN

27/11/23	DLG
1 : 50	9484/ M2010/

PLANNING ISSUE