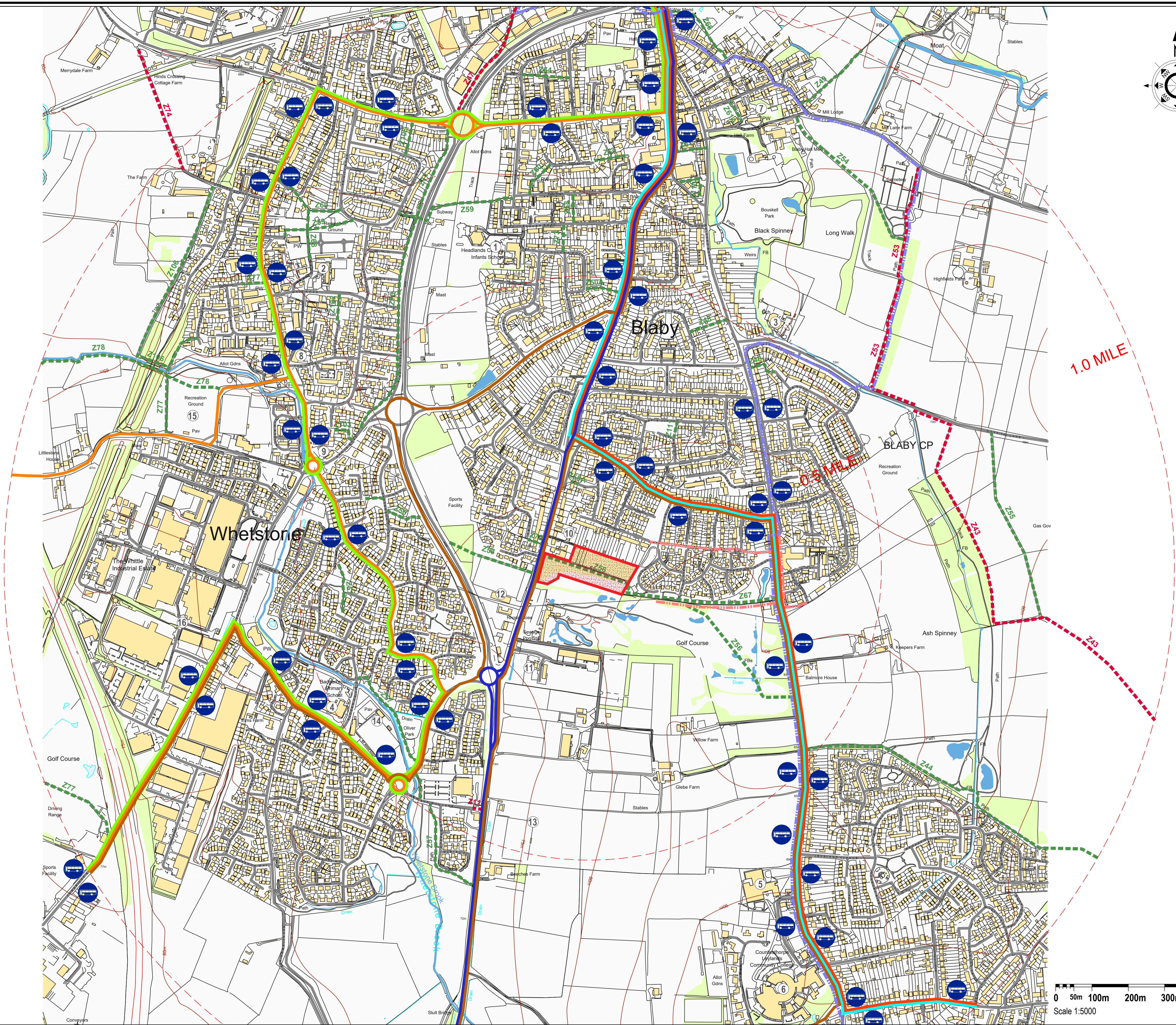
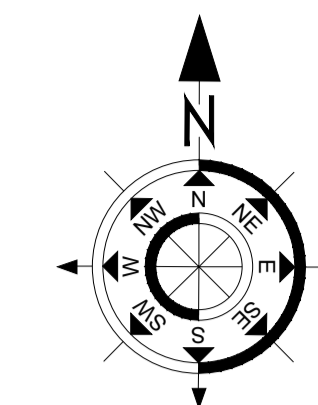


Appendix C





- KEY**
- BUS ROUTES:**
- BUS ROUTE X45 BY ARRIVA (THURINGSTON - LEICESTER - GLEN - BLABY - LITTERWORTH - MAGNA PARK) (MONDAYS TO FRIDAYS)
 - BUS ROUTE 84 BY ARRIVA (LEICESTER - GLEN - BLABY - WHETSTONE) (MONDAYS TO SUNDAYS)
 - BUS ROUTE S84 BY ARRIVA (BLABY - WHETSTONE - COSBY - BROUGHTON - LITTERWORTH) (MONDAYS TO FRIDAYS)
 - BUS ROUTE 85 BY ARRIVA (LEICESTER - BLABY - COUNTERTHORPE - SOUTH WIGSTON) (MONDAYS TO SUNDAYS)
 - BUS ROUTE S85 BY ARRIVA (LEICESTER - GLEN - BLABY - COUNTERTHORPE - SOUTH WIGSTON) (MONDAYS TO FRIDAYS)
 - BUS ROUTE C14 AFTER SCHOOL BUS BY CONFIDENCE BUS & COACH HIRE LTD (COUNTERTHORPE - BLABY - ASTLEY - COSBY - WHETSTONE - GLEN) (TUESDAYS AND THURSDAYS AFTERNOON ONLY)
- BUS STOPS:**
- DISTANCE CIRCLES 0.5mile/1mile
- PUBLIC RIGHTS OF WAY:**
- 257 FOOTPATHS
 - 243 BRIDLEWAYS
- CYCLEWAYS:**
- NATIONAL CYCLEWAY NR 6
 - REDWAYS
- NUMBER KEY:**
- 1 BLABY STOKES C OF E PRIMARY SCHOOL
 - 2 ST. PETER'S C OF E PRIMARY SCHOOL
 - 3 THISTLY MEADOW COMMUNITY PRIMARY SCHOOL
 - 4 BADGEBROOK PRIMARY SCHOOL
 - 5 GREENFIELD PRIMARY SCHOOL
 - 6 COUNTERTHORPE LEYLANDS COMMUNITY COLLEGE
 - 7 BLABY PRE-SCHOOL
 - 8 LILLIPUT MONTESSORI DAY NURSERY
 - 9 THE HUNNY BEAR DAY NURSERY
 - 10 BUSY BEES AT LEICESTER BLABY
 - 11 DAISY CHAIN CHILDREN'S NURSERY
 - 12 LEICESTER LIONS RFC
 - 13 WHETSTONE JUNIORS FOOTBALL CLUB
 - 14 LEICESTERSHIRE & RUTLAND COUNTY FA
 - 15 BLABY UNITED FOOTBALL CLUB
 - 16 WHITTLE INDUSTRIAL ESTATE

Rev	Description	Date	Drawn	Checked

Drawing Approval Status:-

N/A Section 104 N/A Section 38 N/A Section 278

Wormald Burrows Partnership Ltd
Civil Engineering Consultants
12a - 18a Hitchin Street, Biggleswade, SG18 8AX
Tel: (01767) 317244 Fax: (01767) 315434
Web: www.wormburp.com
Email: engineer@wormburp.com

Project:
**Land East of Lutterworth Road
Blaby**

Drawing Description:
**Means of Access
Walking, Cycling and Bus Route Plan**

Client:

Davidsons Group
Wilson House
Leicester Road
Ibstock
Leicestershire LE16 7HP

Drawing Number:
E3646/106

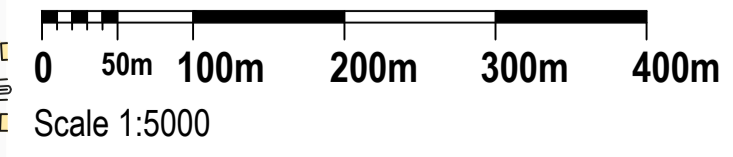
Client Reference:

Scale:
1:5000 @ A1
1:10000 @ A3

Designed By: DTZ Drawn By: DTZ Checked By: ACC

Date: 26.10.20 Date: Date:

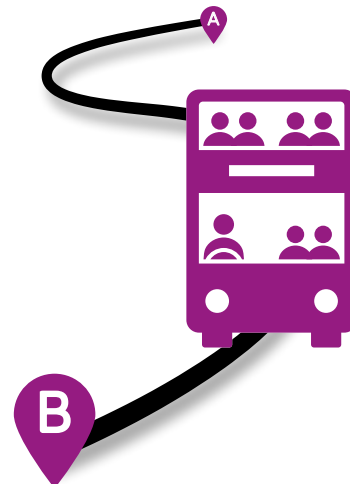
Certified by Afnor UK



Blaby

Bus map & guide

March 2021



Service	Operator(s)	Route	FREQUENCY		
			Monday – Saturday Daytime	Monday – Saturday Evenings	Sunday and Bank Holidays
84	Arriva	BLABY - Leicester	20 mins	hourly	2 hourly
84	Arriva	BLABY - Whetstone - Cosby - Broughton Astley - Dunton Bassett - Lutterworth	Cosby 20 mins, Lutterworth hourly	hourly ■	2 hourly ■
85	Arriva	BLABY - Leicester	20 mins	hourly	2 hourly
85	Arriva	BLABY - Countesthorpe - South Wigston	20 mins	hourly	2 hourly
X45	Arriva	Thurmaston - Leicester City Centre - BLABY - Lutterworth - Magna Park	infrequent (Monday-Friday only)	infrequent (Monday-Friday only)	no service

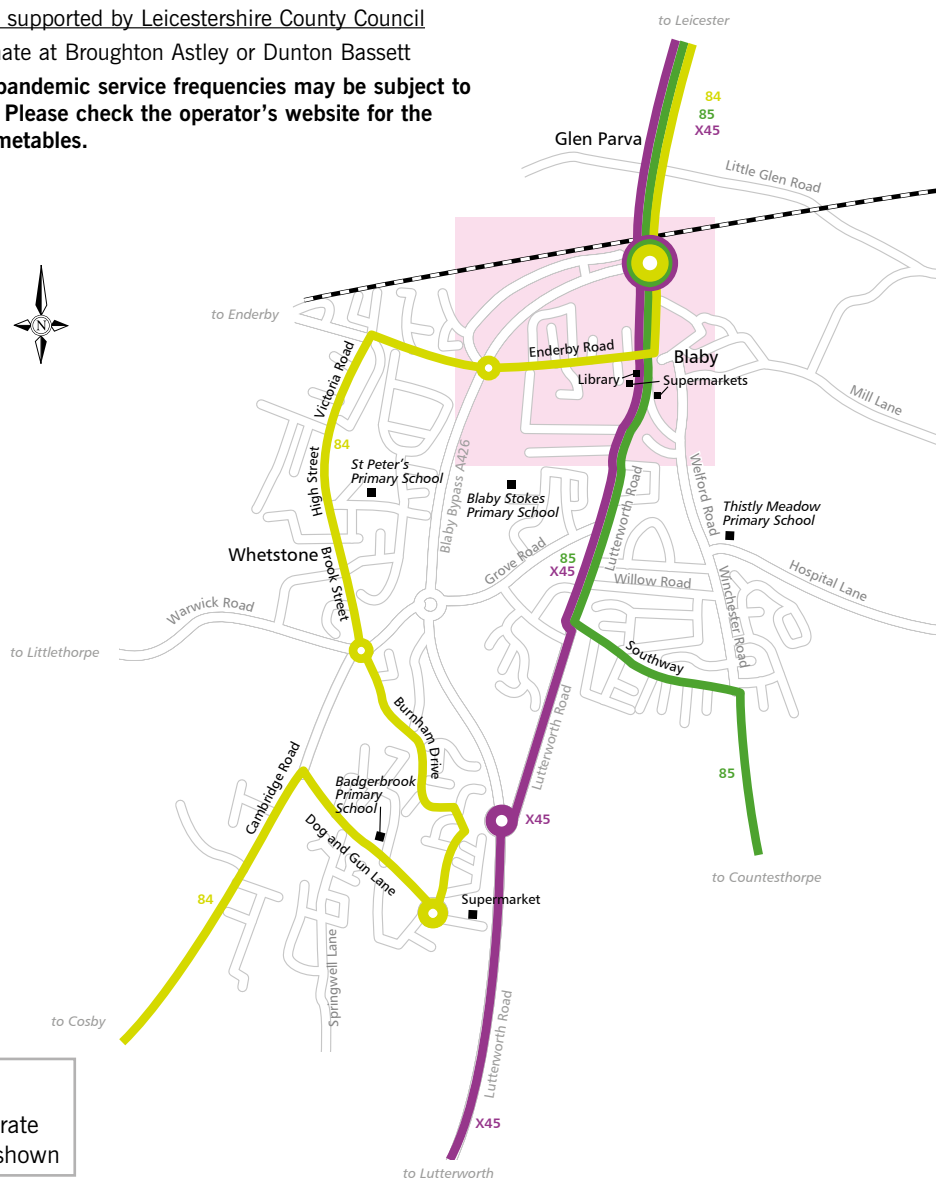
Underlined services are supported by Leicestershire County Council

KEY: ■ Services terminate at Broughton Astley or Dunton Bassett

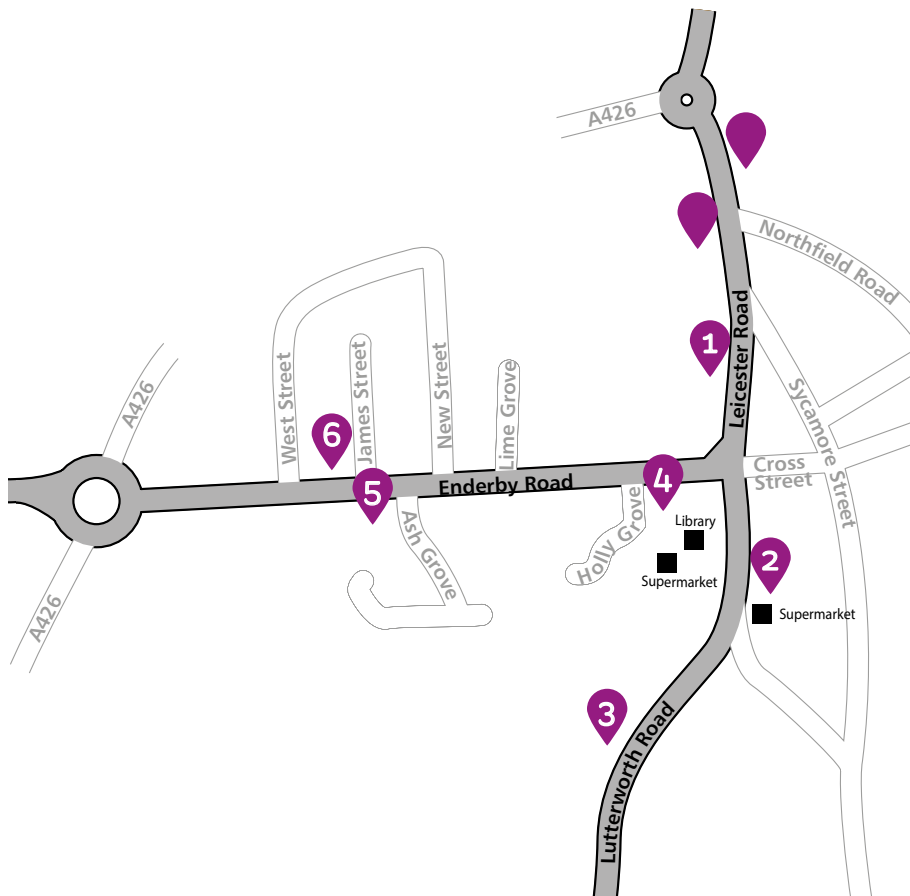
During the COVID-19 pandemic service frequencies may be subject to short notice alteration. Please check the operator's website for the most up to date bus timetables.

For town centre stops see over

Map not to scale



Railway Line
 Services operate in direction shown



Map not to scale

A large print version of this guide is available upon request. Please contact the Helpline on 0116 305 0002.

1	Leicester Road (Forge Corner) 84, 85, X45 SMS code: leidptjt
2	Lutterworth Road 85, X45 SMS code: leidjgat
3	85, X45 SMS code: leidjgmw
4	Enderby Road 84 SMS code: leidgwjg
5	84 SMS code: leidgwpm
6	84 SMS code: leidjawt

For the next timetabled departures from a specific bus stop, text the 8 letter SMS code to 84268.

Normal text message rates apply and the return text message costs 25p.

Bus service numbers in red go to Leicester.

KEY

- Bus Stops
- Bus Served Roads

This map shows the main departure points in the town centre.

@CHYMLEics ChooseHowYouMove

View other local bus guides at www.choosehowyoumove.co.uk/publictransport

Further information

Concessionary travel for older people and for disabled people
The English National Concessionary Travel Scheme offers free off-peak travel on local bus services in all parts of England. For more information please call **0116 305 0002**.

Community Transport in and around Blaby
For older or disabled people who cannot use ordinary buses, Community Action Partnership offers a social car scheme and accessible minibus services. Further details may be obtained by telephoning **0116 288 7482**.

www.traveline.info
0871 200 22 33
calls cost 12p per minute plus your phone company's access charge

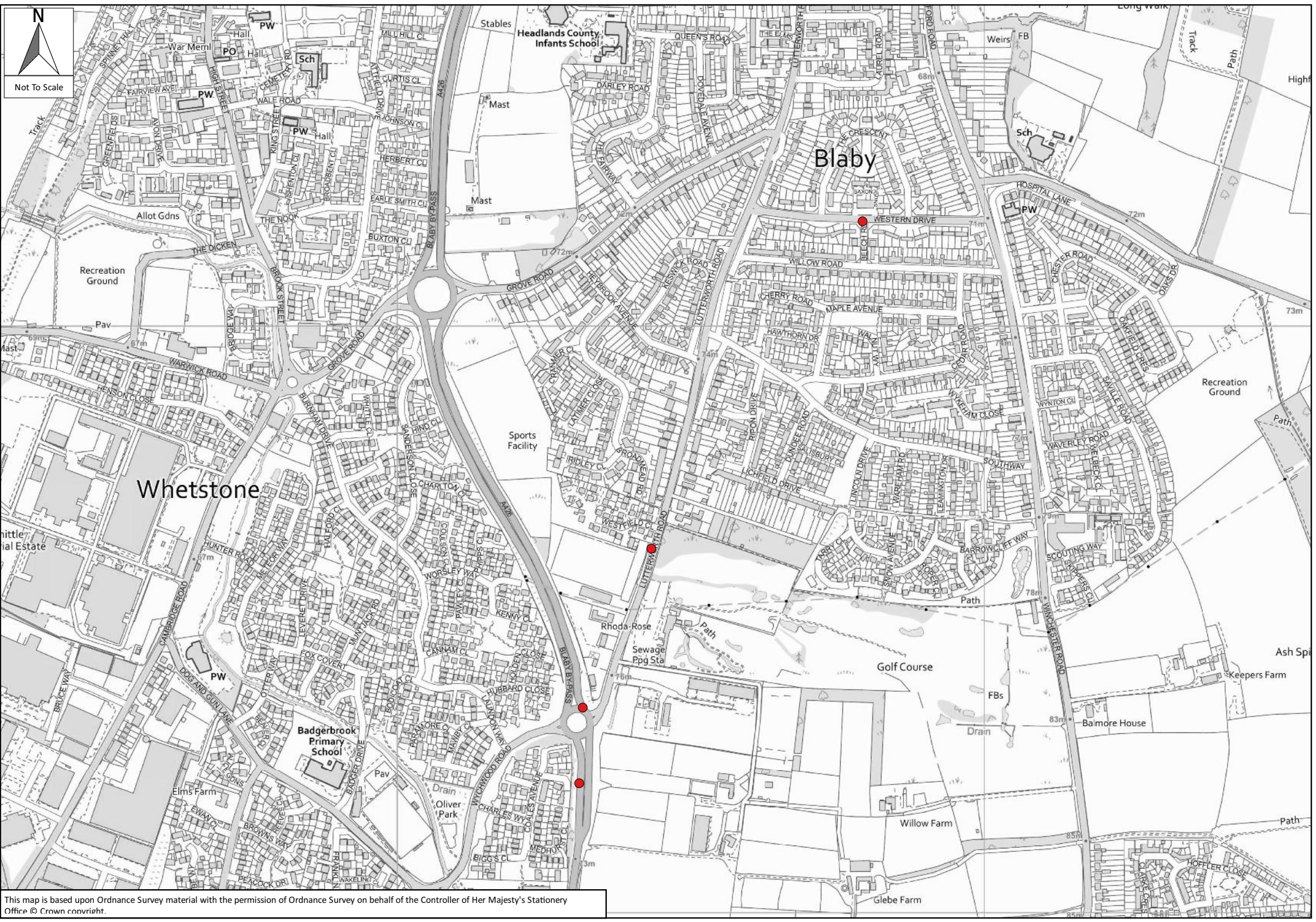
ARRIVA 0344 800 4411
www.arrivabus.co.uk

This guide shows the bus services in Blaby and the main departure points in the town centre. You will find a summary of the services and frequencies in the timetable overleaf. Some single directional or infrequent services may exist but might not be included. For a comprehensive timetable or more information call Traveline on the number provided (07.00 – 22.00). You can also visit local libraries, tourist information centres, local council offices and bus company travel shops.

Visit www.choosehowyoumove.co.uk/publictransport to see our other bus guides. Online updates will only occur if services change.

Appendix D





This map is based upon Ordnance Survey material with the permission of Ordnance Survey on behalf of the Controller of Her Majesty's Stationery Office © Crown copyright.

Accidents between dates **01/01/2015** and **25/10/2020** (70) months

Selection:

; Refined using Accidents within selected Polygons -Data request polygons ("Wormald Burrows Blaby 26.11.2020")

Notes:**Selected Polygon:Wormald Burrows Blaby 26.11.2020**

Police_ref	Date	Easting	Northing	Weather	Road_cond	Visibility	Severity
201501711	08/10/2015	456433	296620	Fine without high winds	Dry	Daylight	Slight

Location: C4604 LUTTERWORTH ROAD BLABY. APPROX 50M S/W BUILDING NO 170.

Vehicles:

Type	Junct_Locn	Manvres	Movef	Movet
Car	Not at, or within 20M of Jct	Going ahead other	NE	SW

Casualties:

Class	Severity
Driver / Rider	Slight

Police_ref	Date	Easting	Northing	Weather	Road_cond	Visibility	Severity
201602182	21/12/2016	456316	296349	Fine without high winds	Dry	Darkness: street lights present and lit	Slight

Location: A426 BLABY BY-PASS BLABY ROUNDABOUT JW LUTTERWORTH ROAD.

Vehicles:

Type	Junct_Locn	Manvres	Movef	Movet
Car	Entering roundabout	Starting	N	S
Motor Cycle over 50 cc and up to 125cc	Entering roundabout	Starting	N	S

Casualties:

Class	Severity
Driver / Rider	Slight

Accidents between dates **01/01/2015** and **25/10/2020** (70) months

Selection:

; Refined using Accidents within selected Polygons -Data request polygons ("Wormald Burrows Blaby 26.11.2020")

Notes:

Police_ref	Date	Easting	Northing	Weather	Road_cond	Visibility	Severity
201802140	05/08/2018	456310	296220	Fine without high winds	Dry	Daylight	Serious

Location: A426 BLABY BY-PASS NR WYCHWOOD ROAD. EXACT LOCATION UNKNOWN.

Vehicles:

Type	Junct_Locn	Manvres	Movef	Movet
Motorcycle over 500cc	Not at, or within 20M of Jct	Going ahead other	S	N

Casualties:

Class	Severity
Driver / Rider	Serious

Police_ref	Date	Easting	Northing	Weather	Road_cond	Visibility	Severity
201900799	05/07/2019	456793	297178	Fine without high winds	Dry	Daylight	Slight

Location: WESTERN DRIVE BLABY J/W BEECH ROAD

Vehicles:

Type	Junct_Locn	Manvres	Movef	Movet
Car	Cleared junction or waiting/parked at junction exit	Going ahead other	E	W
Car	Jct Approach	Going ahead other	W	E

Casualties:

Class	Severity
Driver / Rider	Slight

Number of records in selection: 4

Accidents between dates **01/01/2015** and **25/10/2020** (70) months

Selection: **Notes:**

; Refined using Accidents within selected Polygons -Data request polygons ("Wormald Burrows Blaby 26.11.2020")

Table 1 - Accidents by Month

	2015	2016	2017	2018	2019	2020	Total
January	-	-	-	-	-	-	0
February	-	-	-	-	-	-	0
March	-	-	-	-	-	-	0
April	-	-	-	-	-	-	0
May	-	-	-	-	-	-	0
June	-	-	-	-	-	-	0
July	-	-	-	-	1	-	1
August	-	-	-	1	-	-	1
September	-	-	-	-	-	-	0
October	1	-	-	-	-	-	1
November	-	-	-	-	-	-	0
December	-	1	-	-	-	-	1
TOTAL	1	1	0	1	1	0	4

Table 2 - Casualties by Month

	2015	2016	2017	2018	2019	2020	Total
January	-	-	-	-	-	-	0
February	-	-	-	-	-	-	0
March	-	-	-	-	-	-	0
April	-	-	-	-	-	-	0
May	-	-	-	-	-	-	0
June	-	-	-	-	-	-	0
July	-	-	-	-	1	-	1
August	-	-	-	1	-	-	1
September	-	-	-	-	-	-	0
October	1	-	-	-	-	-	1
November	-	-	-	-	-	-	0
December	-	1	-	-	-	-	1
TOTAL	1	1	0	1	1	0	4

Table 3 - All Accidents by Severity

	2015	2016	2017	2018	2019	2020	Total
Fatal	0	0	0	0	0	0	0
Serious	0	0	0	1	0	0	1
Slight	1	1	0	0	1	0	3
TOTAL	1	1	0	1	1	0	4

Table 4 - Casualties by Severity

	2015	2016	2017	2018	2019	2020	Total
Fatal	0	0	0	0	0	0	0
Serious	0	0	0	1	0	0	1
Slight	1	1	0	0	1	0	3
TOTAL	1	1	0	1	1	0	4

Accidents between dates 01/01/2015 and 25/10/2020 (70) months

Selection: Notes:

; Refined using Accidents within selected Polygons -Data request polygons ("Wormald Burrows Blaby 26.11.2020")

Police Ref.	Date	Cas.	Sev.	Cycs	Peds	Ch	OAPs	Vis.	Manv.	Road Cond.	Time	Location
Selected Polygon:Wormald Burrows Blaby 26.11.2020												
201501711	08/10/2015	1	Slight	0	0	0	1	Light	No turn	Dry	1330	C4604 LUTTERWORTH ROAD BLABY. APPROX 50M S/W BUILDING N
201602182	21/12/2016	1	Slight	0	0	0	0	Dark	No turn	Dry	1855	A426 BLABY BY-PASS BLABY ROUNDABOUT JW LUTTERWORTH RO
201802140	05/08/2018	1	Serious	0	0	0	0	Light	No turn	Dry	1530	A426 BLABY BY-PASS NR WYCHWOOD ROAD. EXACT LOCATION UN
201900799	05/07/2019	1	Slight	0	0	0	0	Light	No turn	Dry	0705	WESTERN DRIVE BLABY J/W BEECH ROAD
Column Totals		4		0	0	0	1					
No. of Accidents				0	0	0	1					
Total number of accidents listed:		4										