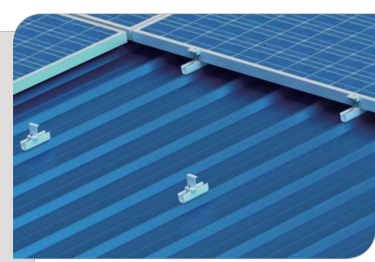


PITCHED ROOF FIXING DETAILS

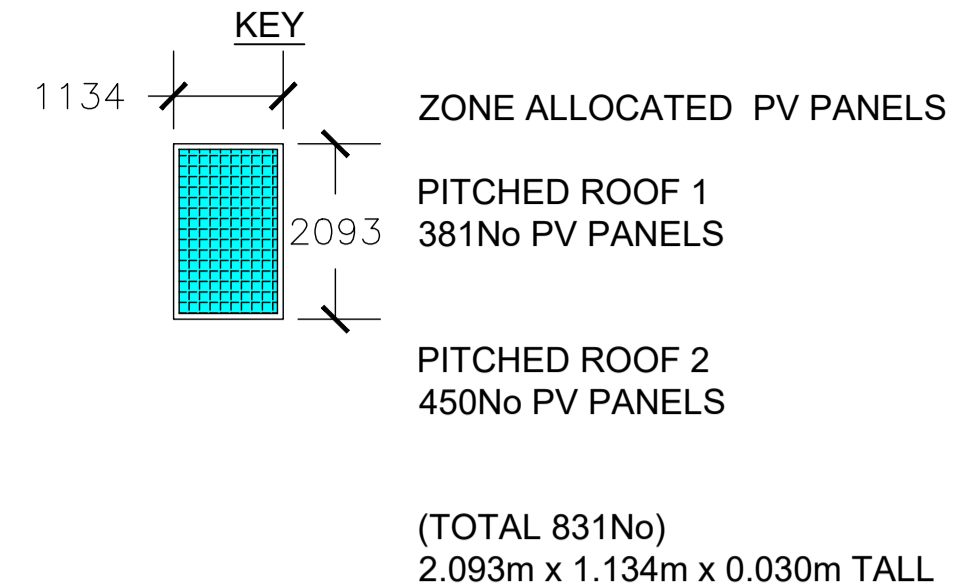
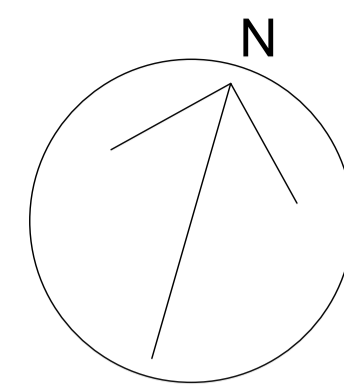
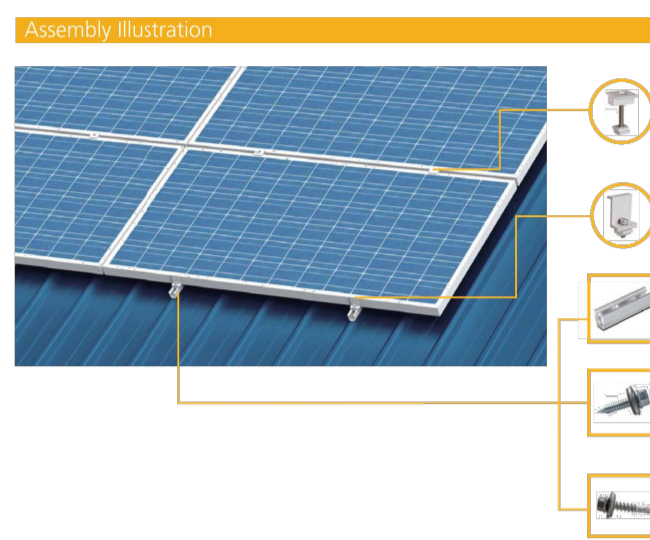
The most simple and cost-effective industrial roof mounting system

Cleergy's PV-eBack Trapezoidal is a roof mounting solution suitable for most trapezoidal metal sheet roofing. The whole system only contains 4 different components. One of these components is our innovative module which makes the clamp quick to locate and for very fast installation of the modules. PV-eBack Trapezoidal is the most advantageous and cost-effective solution for trapezoidal sheet.



Specifications	Key Benefits
Function Mounting PV modules to trapezoidal roofs	Easy and fast installation Short mounting times of only two minutes per module is achieved as only four different components are used per module fixing.
Trapezoidal sheet classification 0.6mm to 1.5mm thickness	• Profile base, lightweight and reducing the need for rails.
Roof Pitch 5-45°	• Suitable over self-draining systems, no gable hole or fixing template required.
Maximum Building Height 20m	• Change Trapezoidal End and Intermediate clamps, using our unique 2 module for fast module mounting.
Module Type Suitable for all PV Modules from 288mm to 576mm sizes	• Lightweight space saving design
Weight Pre-assembled EVA seal	Optimum multi-purpose design
Module Orientation Landscape	• 288mm base makes it suitable for all trapezoidal profiles.
Standards DNV 1055	• Suitable for top sheets of 0.4mm to 1.5mm.
Material Anodised aluminium	• Suitable for composite, full or end angle in industrial roof designs.
Weight 58 grams	• Suitable for the high wind uplift associated in particular with low pitch roofs.
Warranty 10 years	• Suitable for all module heights from 288mm to 576mm.
	• 288mm high for optimum cooling of modules.
	Outstanding performance
	Components are anodised aluminium, aluminium or stainless steel to prevent corrosion and ensure long term effectiveness. Cleergy provides a 10-year product warranty.

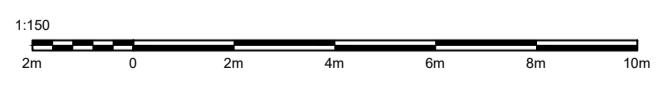
- Key Components**
- **16Support**
Designed to mount PV modules in combination with Cleergy's standard module clamp.
 - **E07 Sharp point Screw #3.5 5x25**
For metal top sheets from 0.4mm to 0.63mm.
 - **3PS self-drilling Screw 3PS-S03-516-0.8 X 25**
For metal top sheets greater than 0.63mm. Use 3PS being attachment to avoid over tightening.



PITCHED ROOF 1

CENTRE

PITCHED ROOF 2



Revision	Description	Date
-	-	-

Synergy Power Ltd
 The Techno Centre
 Coventry University Technology Park
 Puma Way, Coventry CV1 2TT
 tel: 02476 158411
 e-mail: info@synergypowerltd.co.uk

Client

Project
STREATHAM ICE & LEISURE CENTRE
 390 STREATHAM HIGH ROAD
 LONDON SW16 6HX

Title

ROOF
PROPOSED PV ARRAY

Status

PRELIMINARY.

Drawn by	Checked	File
NDS	KD	SLC-E-002.DWG.
Drawing Number	Revision	Scale
SLC-E-002	-	1:150 at A1.
	Date	
	23.06.2023	