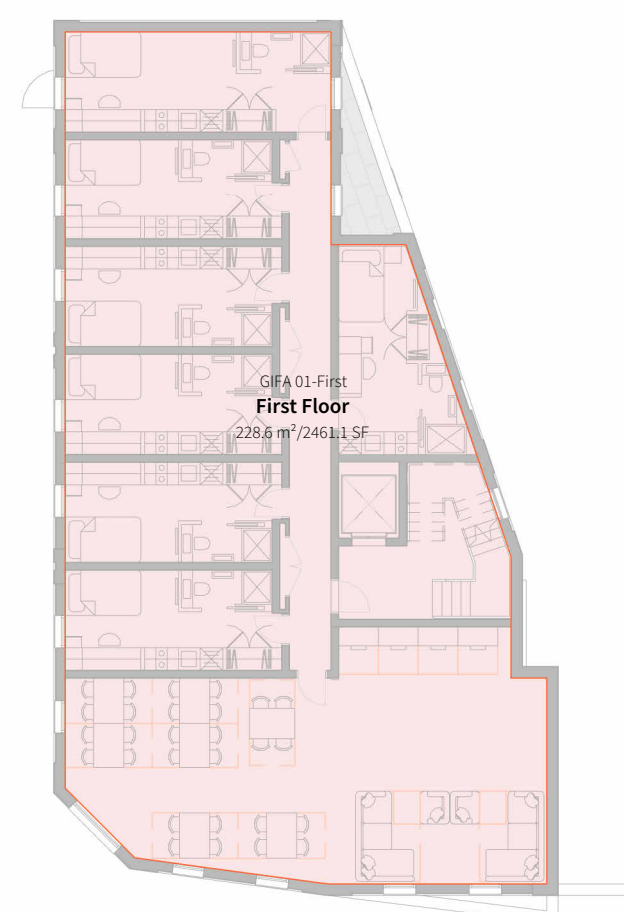


GENERAL NOTES

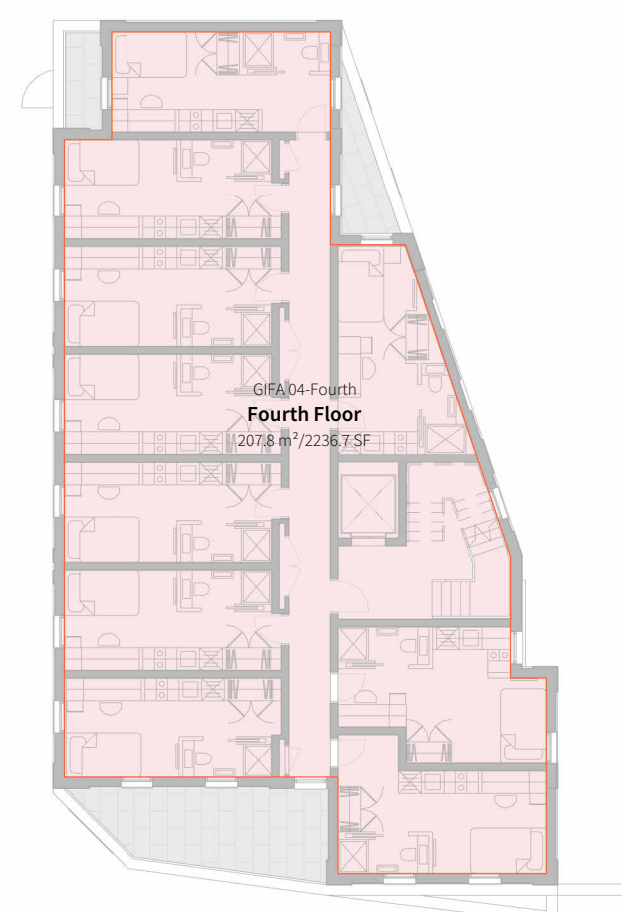
- Contractor must ensure that all work on site is carried out in a safe & satisfactory manner, in accordance with Health & Safety At Work Act 1974, COSHH Regulations 2002 & requirements of C.D.M.
- Structural Design shown in abeyance - refer to Structural Engineer's drawings and specifications.
- Mechanical & Electrical shown in abeyance - refer to M&E Engineer's drawings and specifications.
- All dimensions shown are to wall structure (Block/Stud) unless otherwise stated.

Schedule_GIA

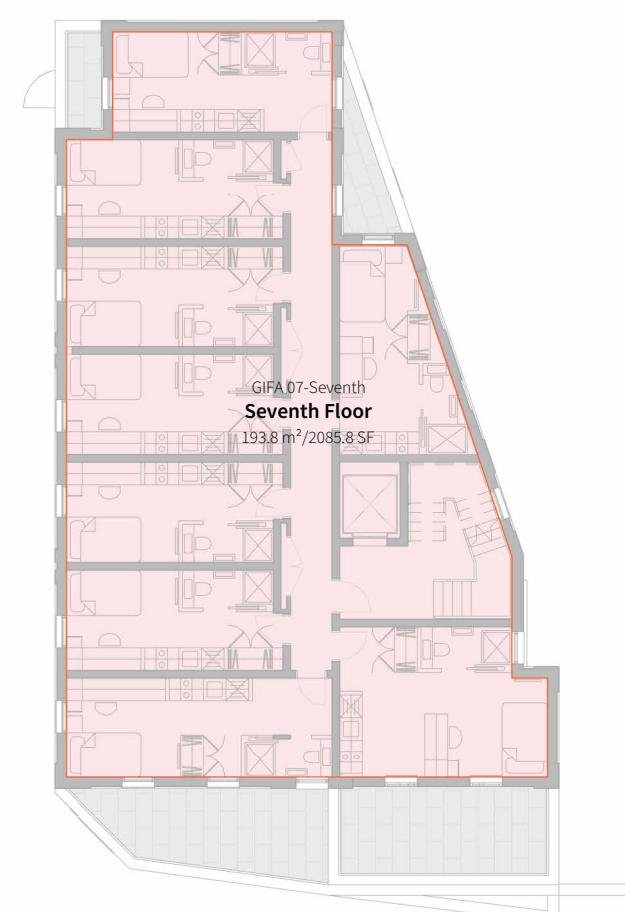
Area (Metric)	Area (Imperial)
2094.5 m ²	22544.95 SF



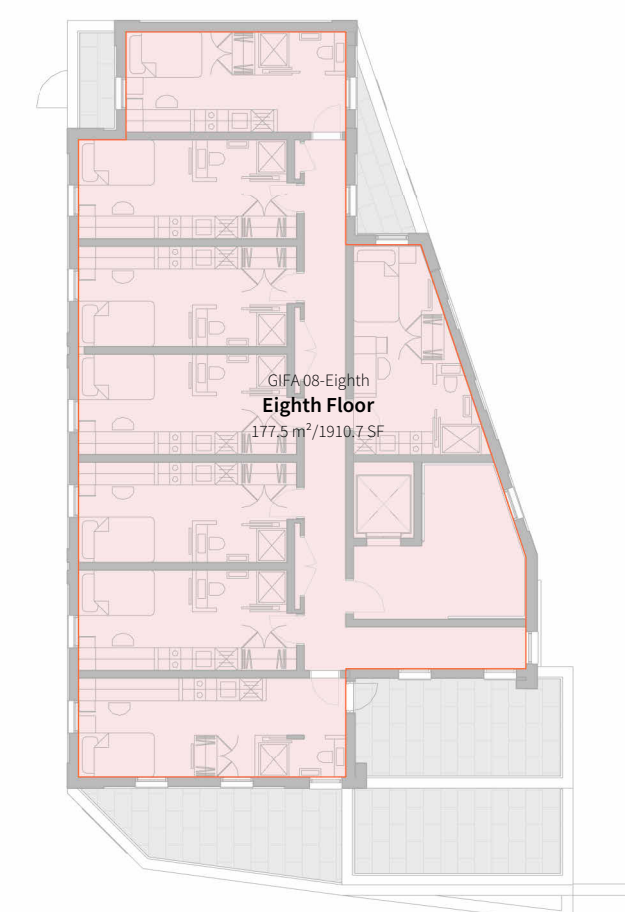
3 01-First
1:200



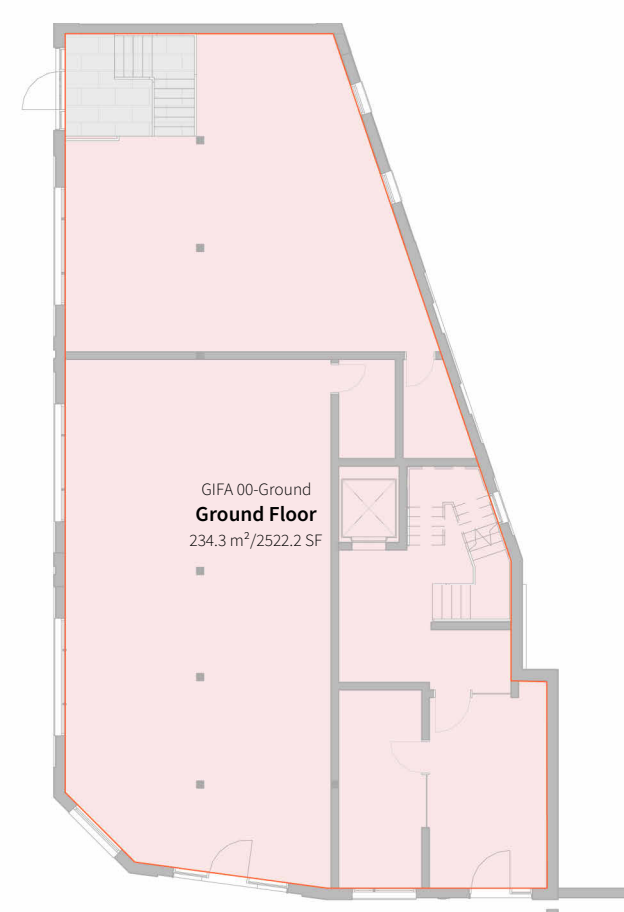
6 04-Fourth
1:200



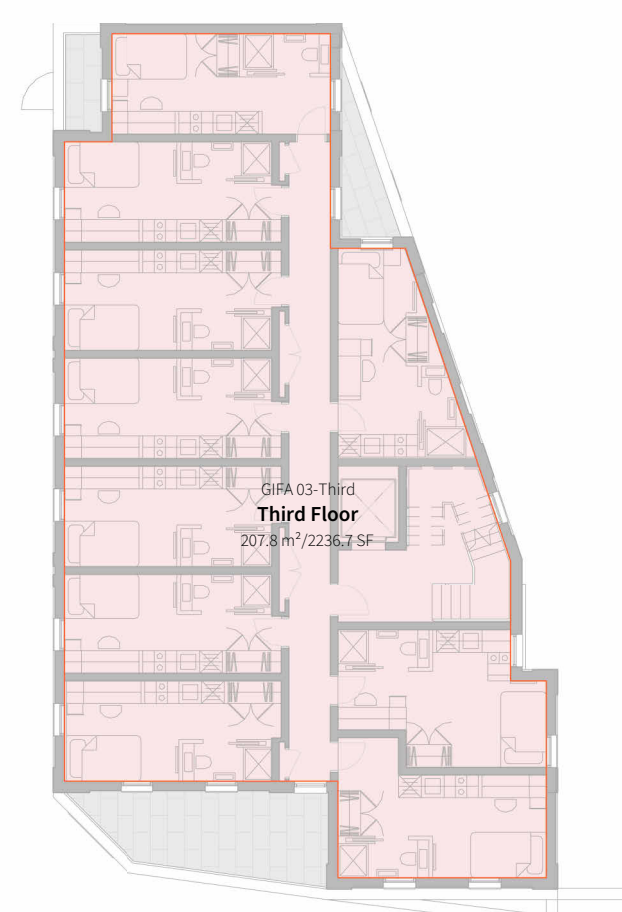
9 07-Seventh
1:200



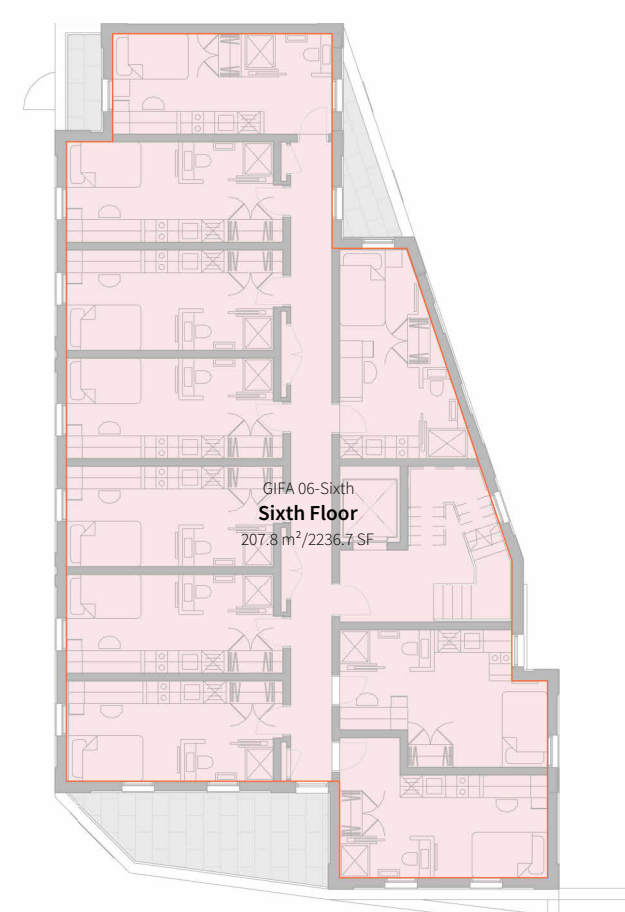
10 08-Eighth
1:200



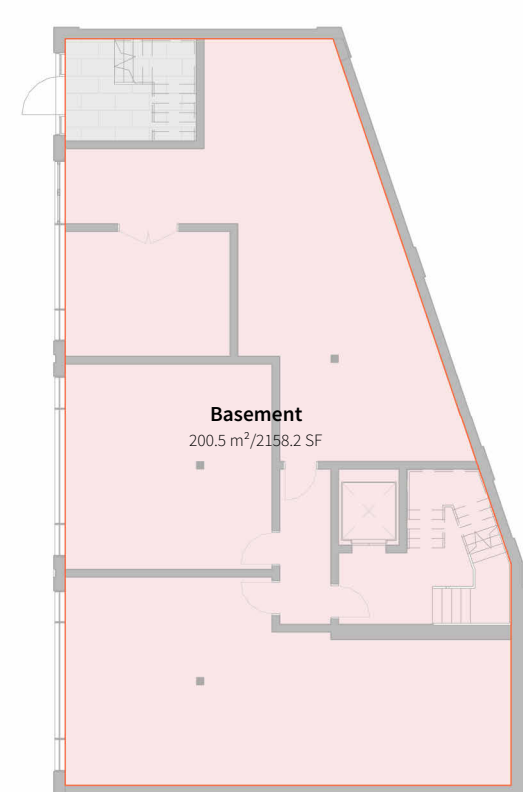
2 00-Ground
1:200



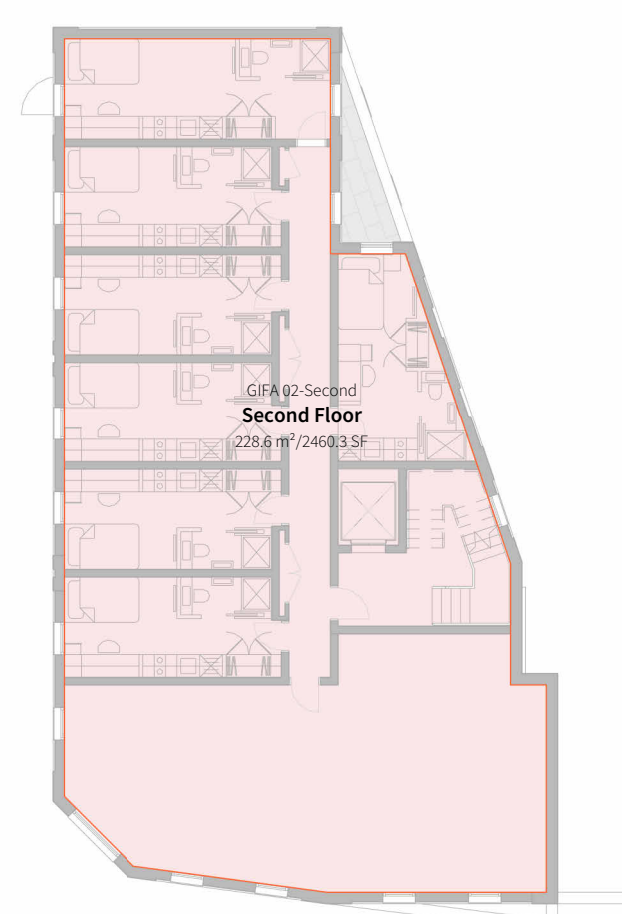
5 03-Third
1:200



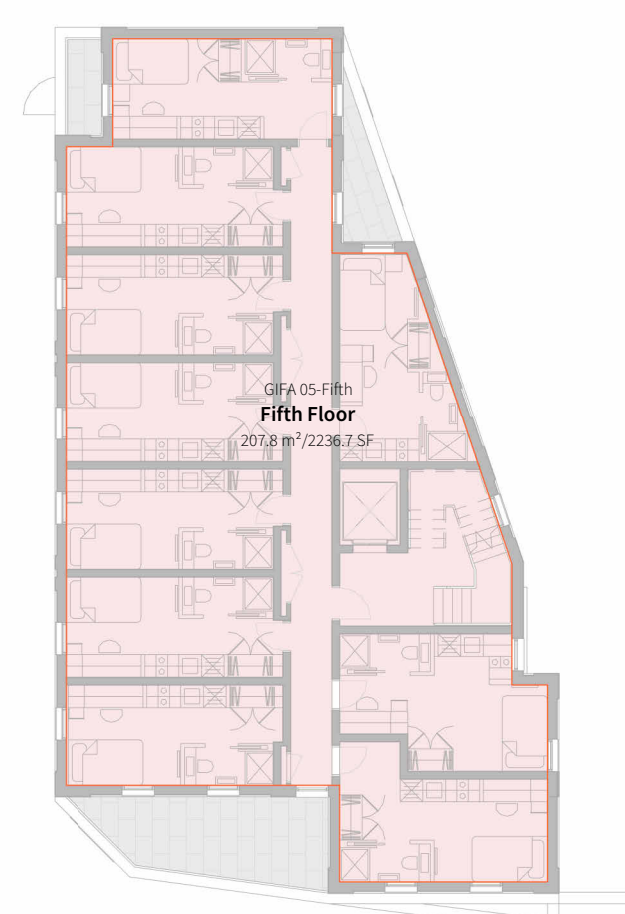
8 06-Sixth
1:200



1 B1-Basement
1:200



4 02-Second
1:200



7 05-Fifth
1:200

Notes: