



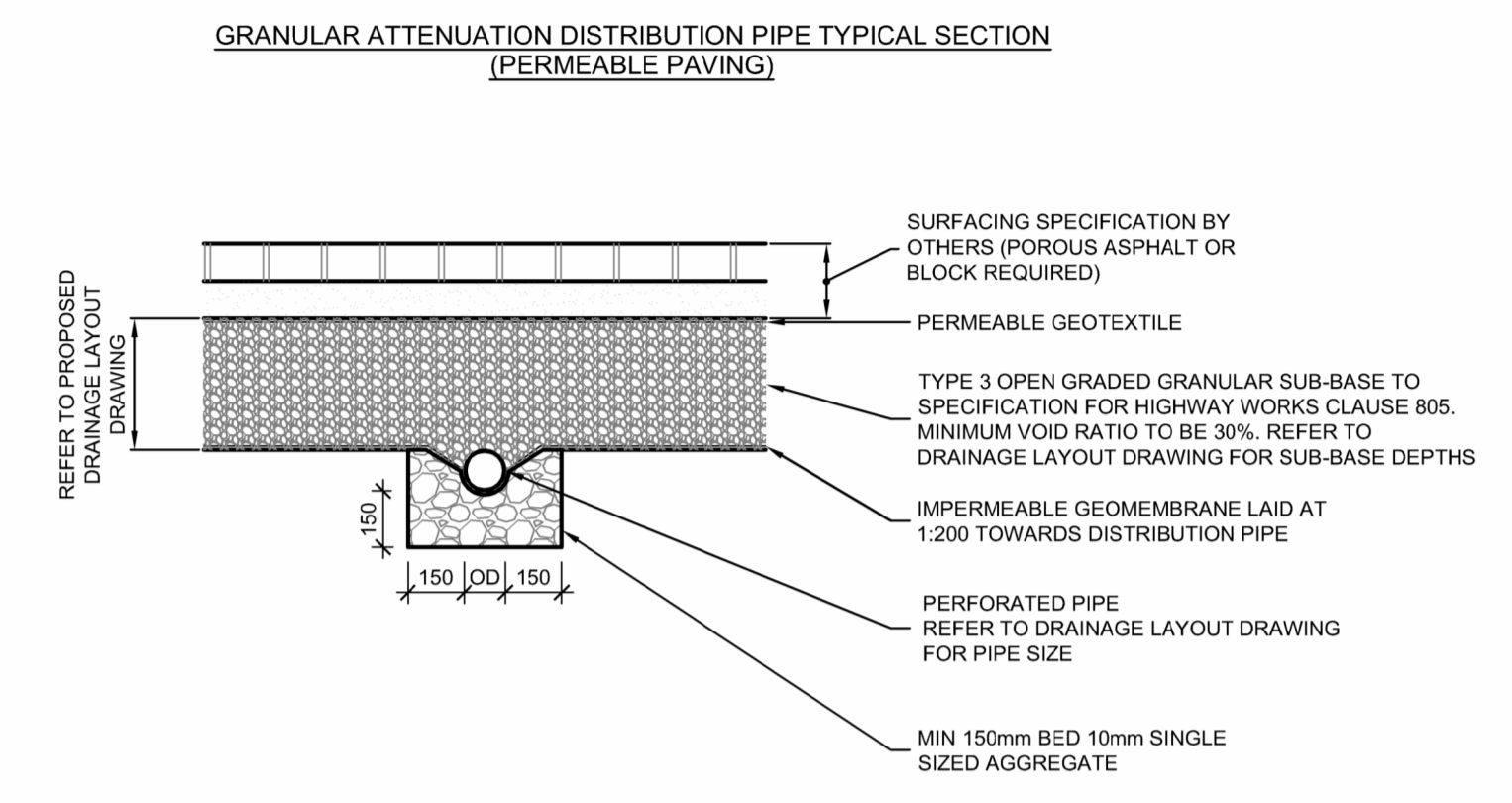
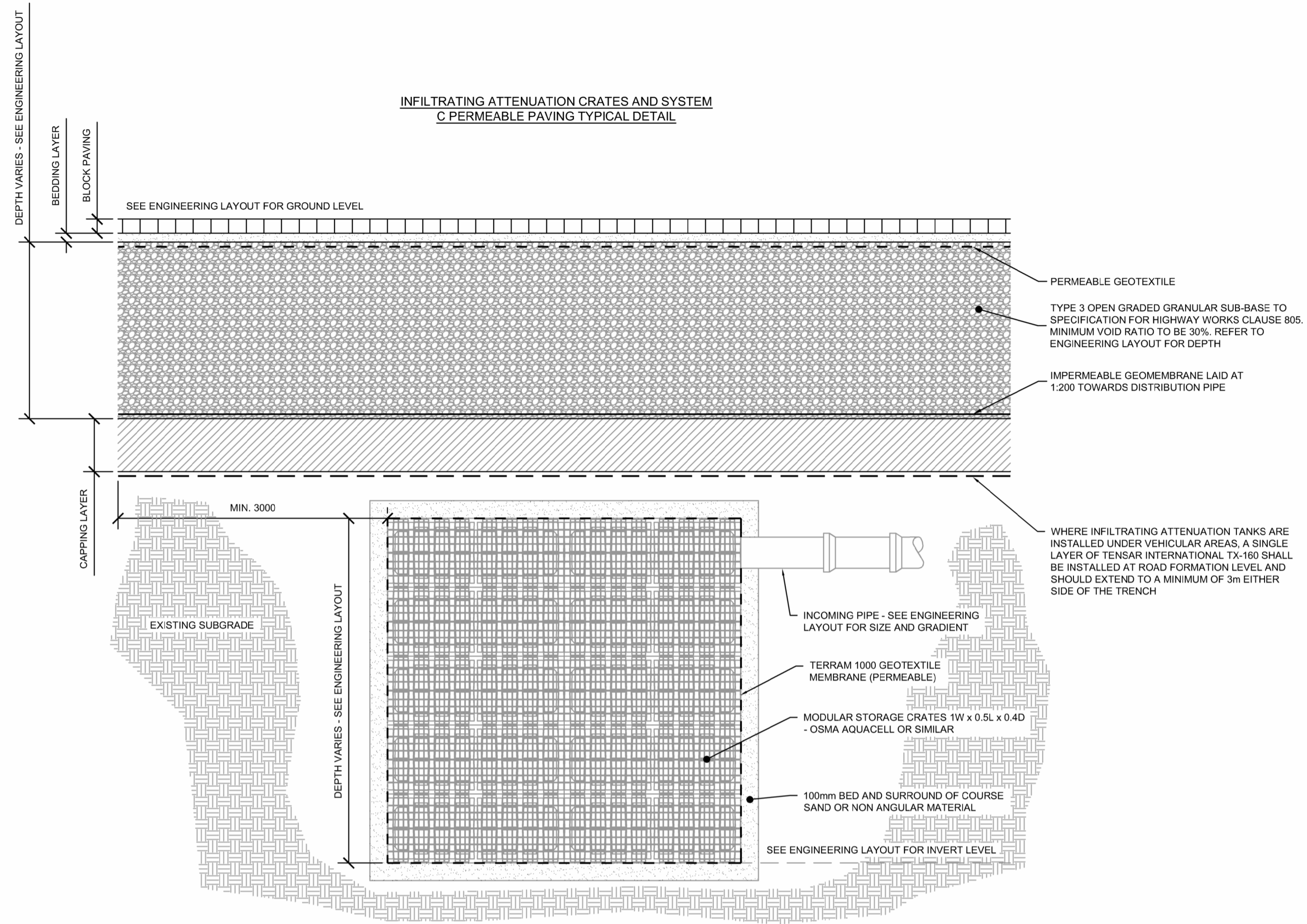
HEALTH AND SAFETY INFORMATION

CONSTRUCTION
THIS DRAWING SHOULD NOT BE USED FOR CONSTRUCTION PURPOSES.

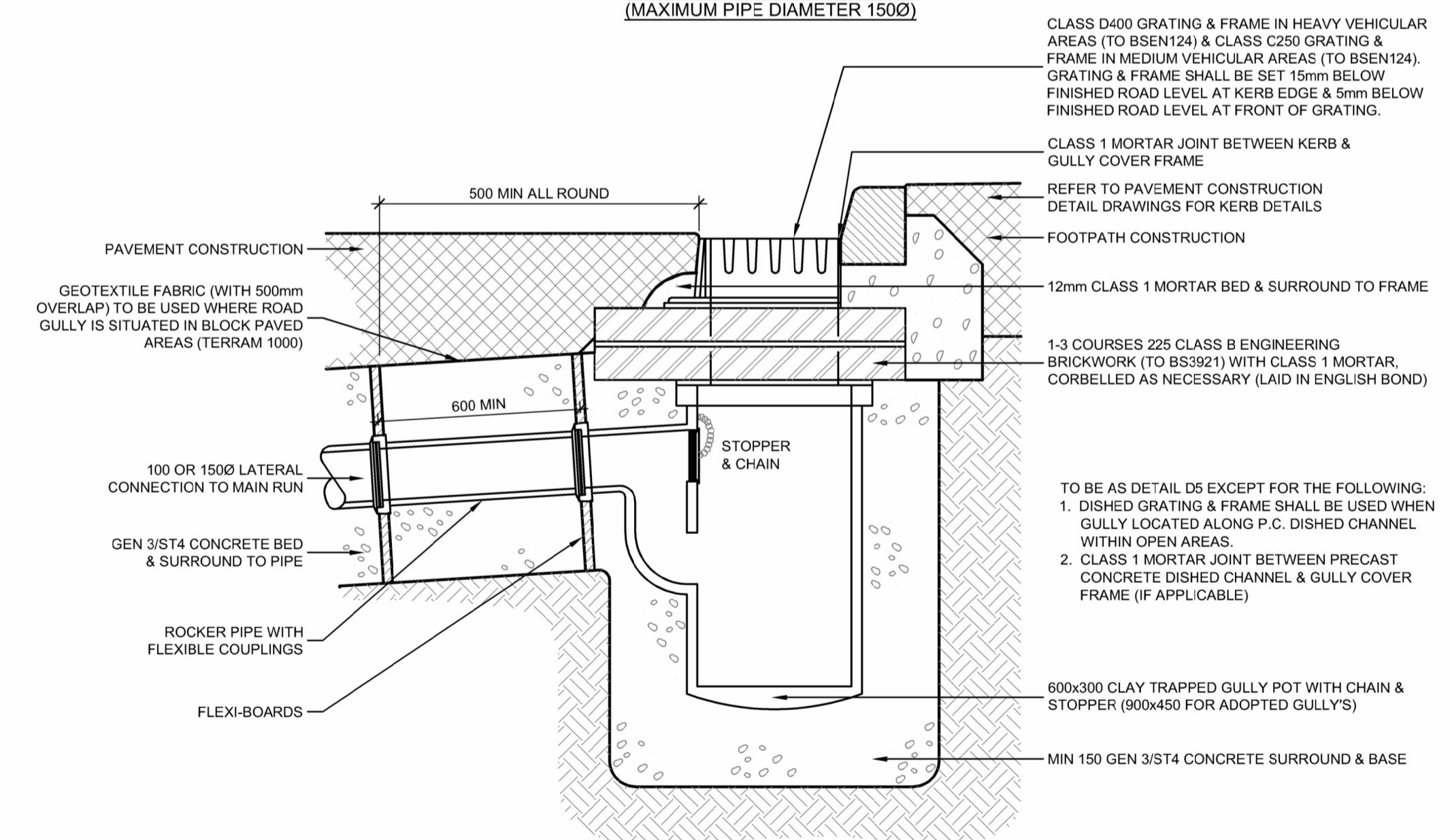
NOTES

- DO NOT SCALE FROM THIS DRAWING. ONLY FIGURED DIMENSIONS ARE TO BE USED.
- ALL DIMENSIONS ARE IN MILLIMETRES UNLESS NOTED OTHERWISE.
- ALL LEVELS ARE IN METRES ABOVE ORDNANCE DATUM UNLESS NOTED OTHERWISE.
- THIS DRAWING IS TO BE READ IN CONJUNCTION WITH ALL RELEVANT ARCHITECTS AND ENGINEERS DRAWINGS AND SPECIFICATIONS.
- MATERIAL SPECIFICATIONS IN ACCORDANCE WITH BRISTOL COUNTY COUNCIL DOCUMENT '3.7.0 ADOPTABLE HIGHWAY MATERIAL PALETTE' (APRIL 2023), SECTION: CONSERVATION AREAS.

KEY



ROAD GULLY & KERB (& ROAD GULLY IN OPEN AREAS) (MAXIMUM PIPE DIAMETER 1500)



PI	STAGE 3 ISSUE	DL	RW	RW	29/09/23
REV	DESCRIPTION	DRN	CHK	APP	DATE

whitby wood

91-94 LOWER MARSH
LONDON SE1 7AB, UNITED KINGDOM
+44 (0)20 7442 2216 www.whitbywood.com



PROJECT
COLLEGE ROAD
BRISTOL

PRELIMINARY

DRAWING TITLE
DRAINAGE DETAILS
SHEET 2

DATE	SCALES @ A1	DRAWN BY	CHECKED	APPROVED
09/08/2023	NTS	DL	RW	RW
DRAWING NUMBER				REVISION
CRB-WWS-XX-XX-D-C-01031				P1