

**HEALTH AND SAFETY INFORMATION**

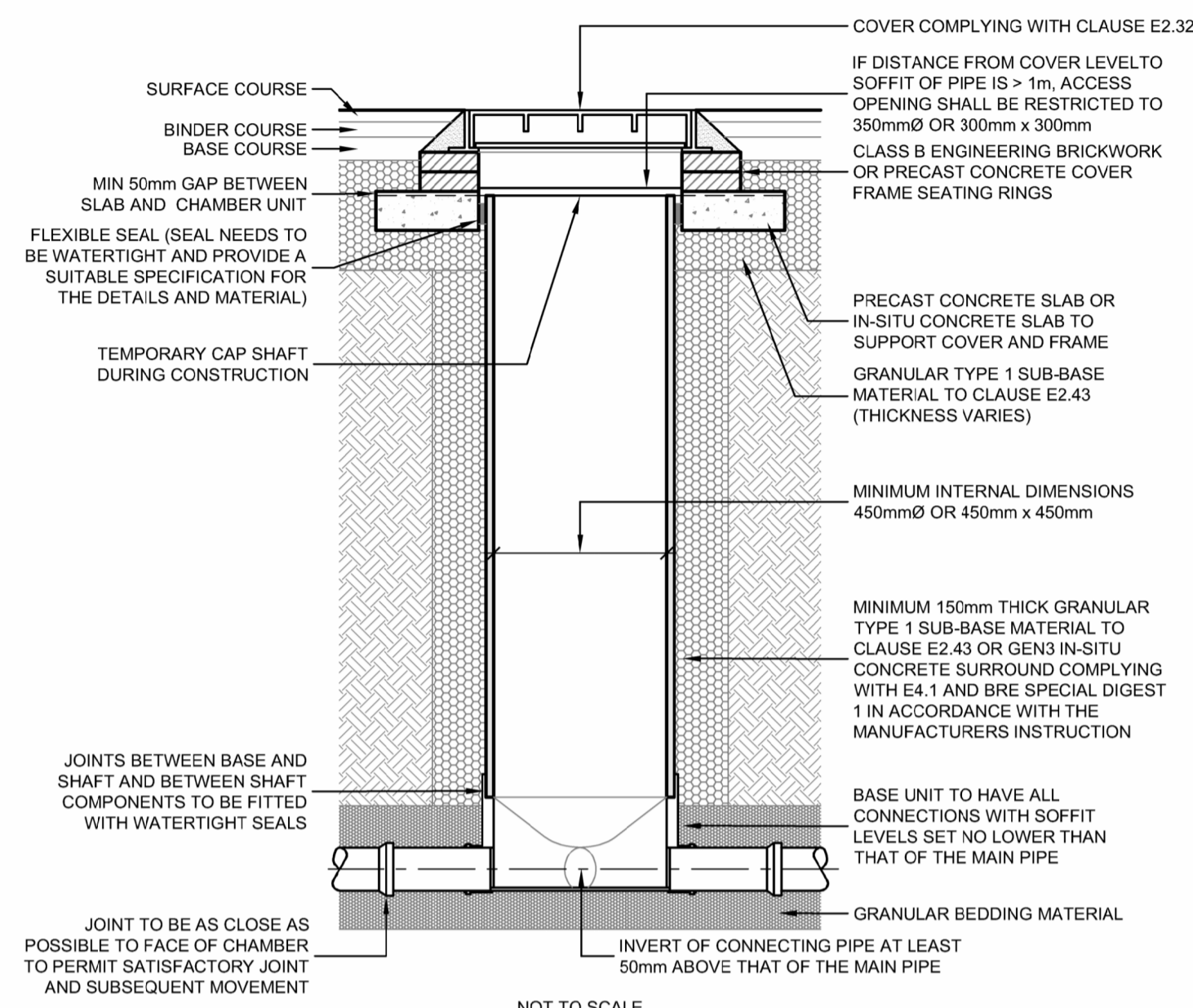
**CONSTRUCTION**  
THIS DRAWING SHOULD NOT BE USED FOR CONSTRUCTION PURPOSES.

**NOTES**

- DO NOT SCALE FROM THIS DRAWING. ONLY FIGURED DIMENSIONS ARE TO BE USED.
- ALL DIMENSIONS ARE IN MILLIMETRES UNLESS NOTED OTHERWISE.
- ALL LEVELS ARE IN METRES ABOVE ORDNANCE DATUM UNLESS NOTED OTHERWISE.
- THIS DRAWING IS TO BE READ IN CONJUNCTION WITH ALL RELEVANT ARCHITECTS AND ENGINEERS DRAWINGS AND SPECIFICATIONS.

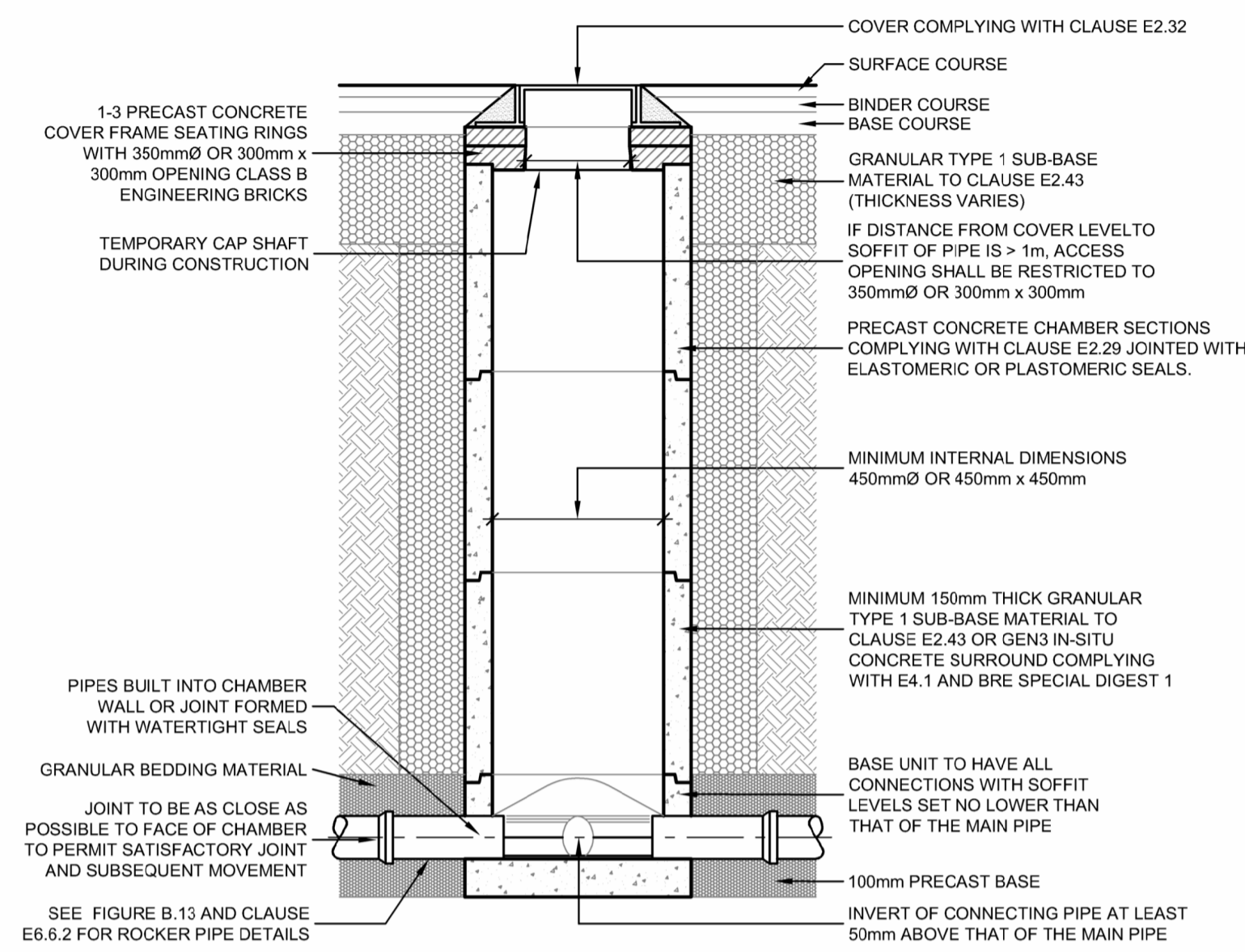
**KEY**

**FIGURE B18**  
TYPICAL INSPECTION CHAMBER DETAIL - TYPE D  
DEPTH FROM COVER LEVEL TO SOFFIT UP TO 3m  
FLEXIBLE MATERIAL CONSTRUCTION FOR USE IN  
AREAS SUBJECT TO VEHICLE LOADING

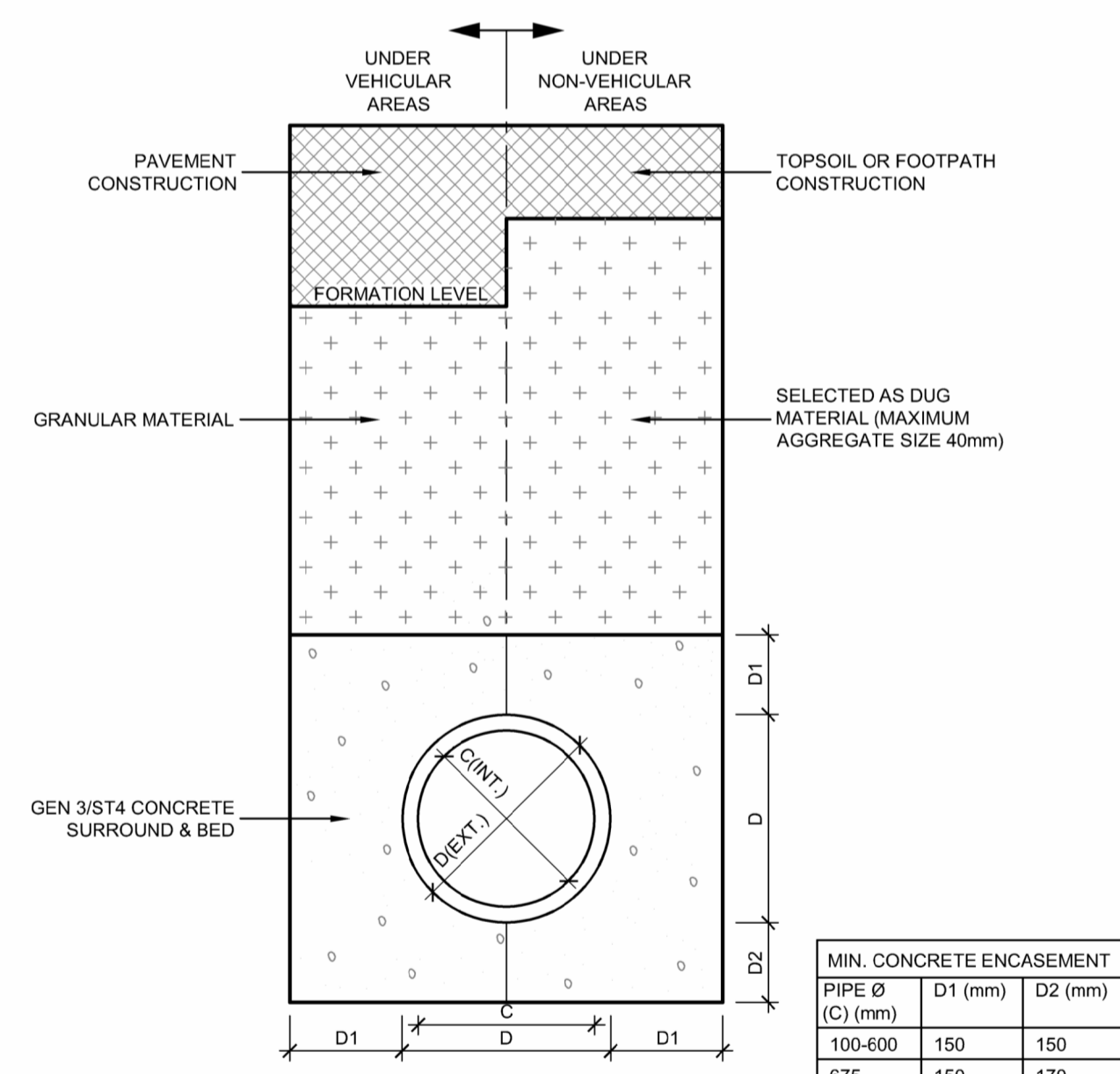


NOTE: WHERE THE ACCESS CHAMBER IS IN THE HIGHWAY (INCLUDING ANY FOOTWAY), THE HIGHWAY AUTHORITY CAN HAVE SPECIFIC REQUIREMENTS.

**FIGURE B20**  
TYPICAL INSPECTION CHAMBER DETAIL - TYPE D  
DEPTH FROM COVER LEVEL TO SOFFIT UP TO 3m  
RIGID MATERIAL CONSTRUCTION FOR USE IN AREAS  
SUBJECT TO PEDESTRIAN AND VEHICLE LOADING



NOTE: WHERE THE ACCESS CHAMBER IS IN THE HIGHWAY (INCLUDING ANY FOOTWAY), THE HIGHWAY AUTHORITY CAN HAVE SPECIFIC REQUIREMENTS.

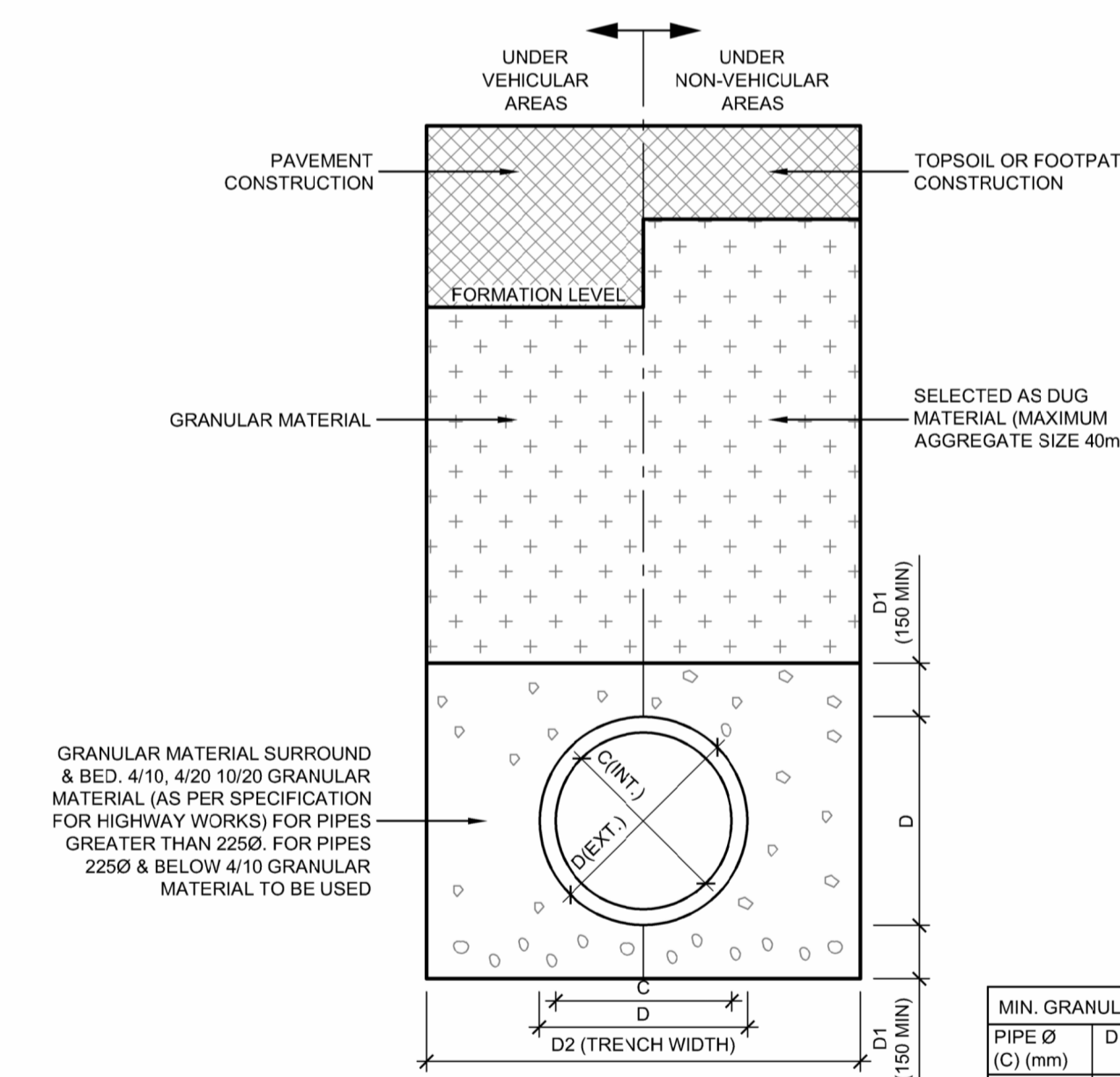


- TO BE USED UNDER:
- VEHICULAR AREAS WHERE COVER TO PIPE SOFFIT IS EQUAL TO OR LESS THAN 1200mm.
  - ALL NON-VEHICULAR AREAS WHERE COVER TO PIPE SOFFIT IS EQUAL TO OR LESS THAN 900mm.

NOTE:  
ALL PIPEWORK WITH CLASS Z (GEN 3/S14) CONCRETE SURROUND SHALL HAVE FLEXIBLE COUPLINGS WITH FLEXI-BOARDS ON ALL JOINTS

**CLASS Z PIPE BEDDING & SURROUND (TO BE USED FOR PLASTIC, VITRIFIED CLAY & CONCRETE PIPEWORK)**

PIPE Ø (C) (mm)	D1 (mm)	D2 (mm)
100-600	150	150
675	150	170
750	150	190
825	150	210
900	150	225
975	150	250
1050	150	270
1200	170	300
1350	180	350
1500	200	375
1650	220	420



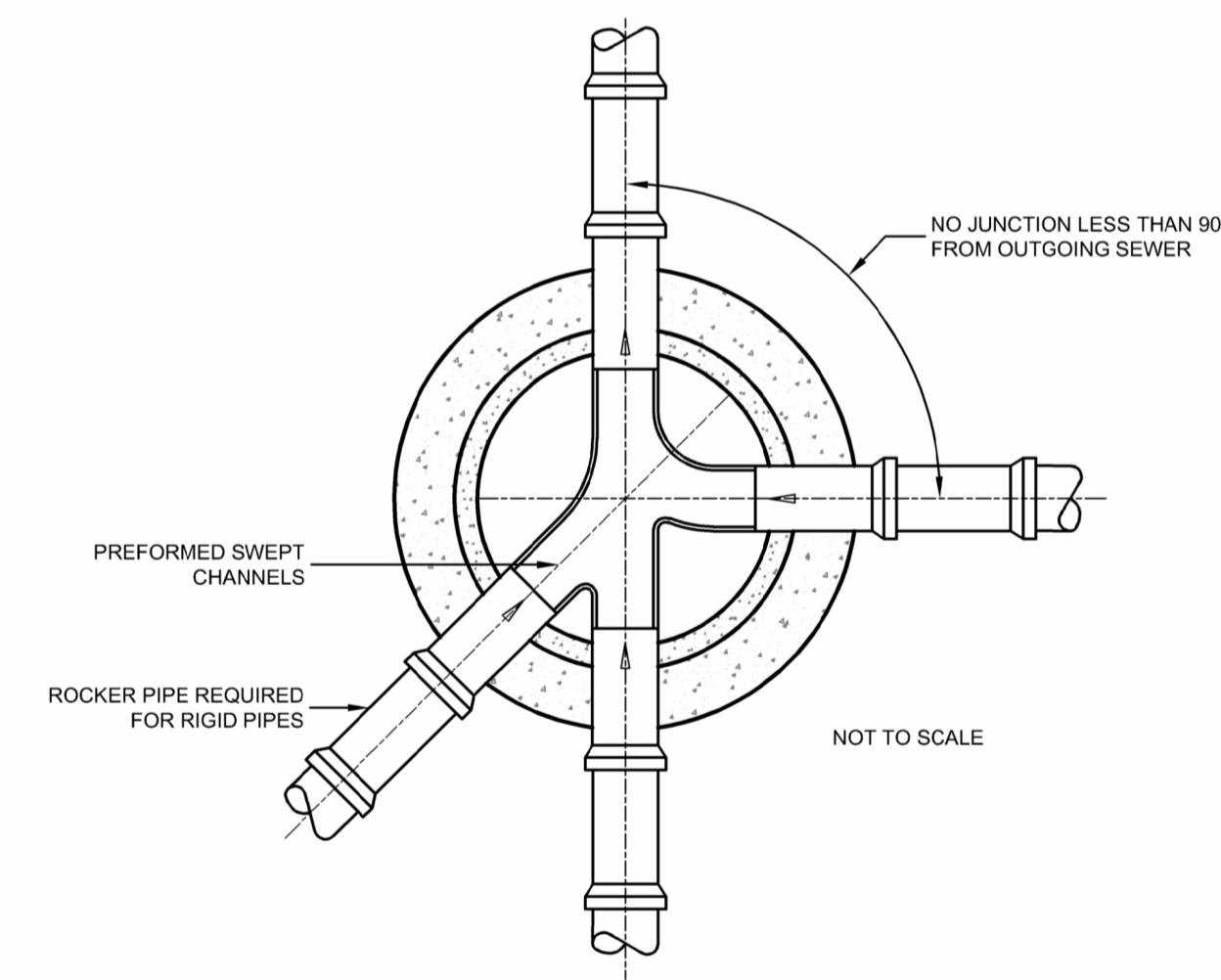
- TO BE USED UNDER:
- VEHICULAR AREAS WHERE COVER TO PIPE SOFFIT IS GREATER THAN 1200mm.
  - ALL NON-VEHICULAR AREAS WHERE COVER TO PIPE SOFFIT IS GREATER THAN 900mm.

NOTE:  
ALL PIPEWORK SHALL HAVE FLEXIBLE COUPLINGS

**CLASS S PIPE BEDDING & SURROUND (TO BE USED FOR PLASTIC, VITRIFIED CLAY & CONCRETE PIPEWORK)**

PIPE Ø (C) (mm)	D1 (mm)	D2 (mm)
150	150	600
225	150	700
300	150	850
375	200	1050
450	200	1150
525	200	1200
600	200	1350
675	200	1450
750	200	1500

**FIGURE B13**  
TYPICAL ARRANGEMENT OF PIPE JUNCTIONS WITH MANHOLES

**SECTIONAL PLAN**

RIGID PIPES BUILT INTO MANHOLE SHOULD HAVE A FLEXIBLE JOINT AS CLOSE AS FEASIBLE TO THE EXTERNAL FACE OF THE STRUCTURE AND THE LENGTH OF THE NEXT ROCKER PIPE SHOULD BE AS SHOWN

NOMINAL DIAMETER (mm)	MAXIMUM EFFECTIVE LENGTH (m)
150 - 600	0.6
601 - 750	1.00
OVER 750	1.25

ALL PIPES ENTERING THE BOTTOM OF THE MANHOLE TO HAVE SOFFITS LEVEL

REV	DESCRIPTION	DL	RW	APP	DATE
P01	PRELIMINARY ISSUE				28/09/23

**whitby wood**  
91-94 LOWER MARSH  
LONDON SE1 7AB, UNITED KINGDOM  
+44 (0)20 7442 2216 www.whitbywood.com



PROJECT  
COLLEGE ROAD  
BRISTOL

**PRELIMINARY**

DRAWING TITLE  
SECTION 38  
DRAINAGE DETAILS  
SHEET 1

DATE	SCALES @ A1	DRAWN BY	CHECKED	APPROVED
09/08/2023	NTS	DL	RW	RW
DRAWING NUMBER				REVISION
CRB-WWS-XX-XX-D-C-04010				P1