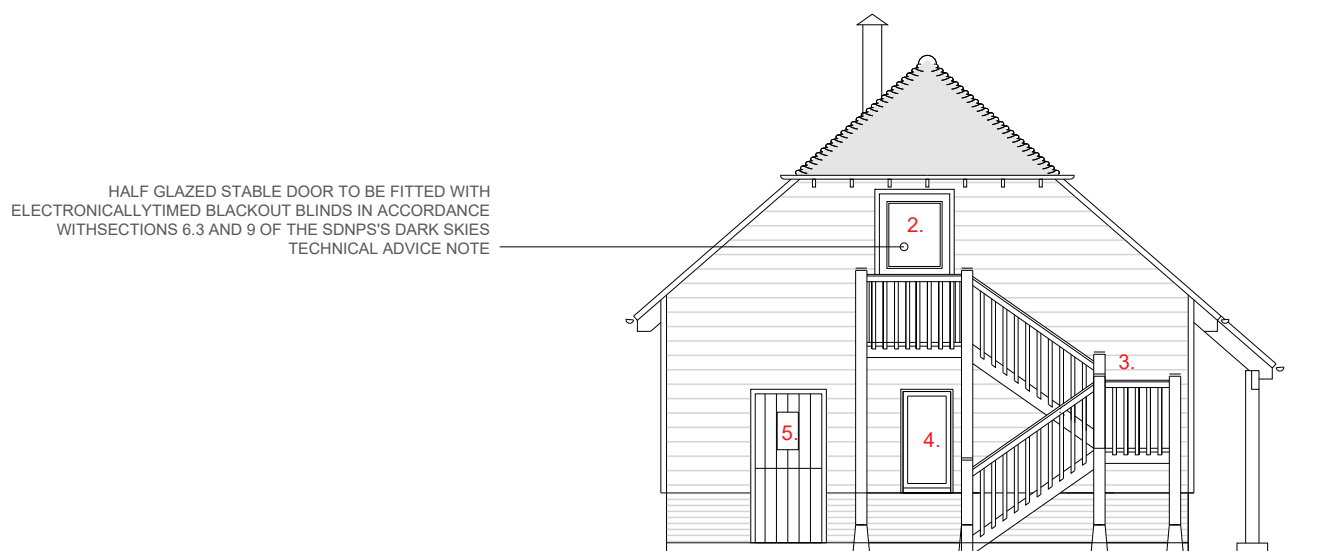


SOUTH ELEVATION

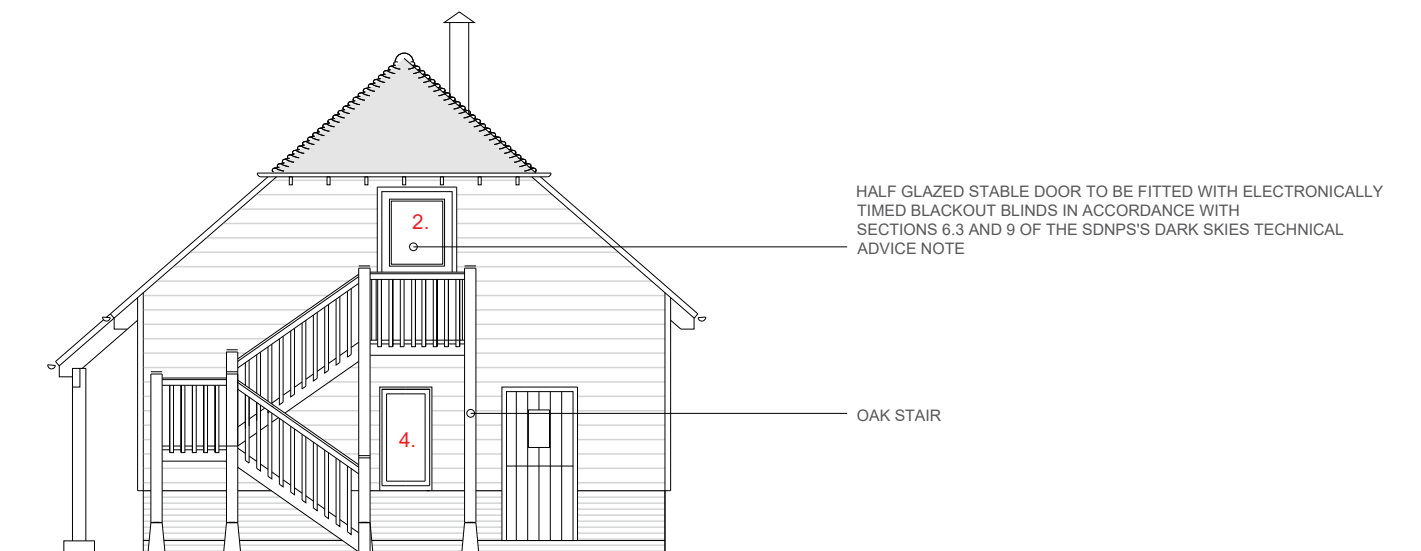


NORTH ELEVATION

- 1. 2 No OAK STAIRS ADDED
- 2. DOOR IN LIEU OF WINDOW
- 3. WINDOW OMITTED
- 4. WINDOW REPOSITIONED
- 5. DOOR REPOSITIONED



EAST ELEVATION



WEST ELEVATION



ALL AS APPROVED UNLESS NOTED IN RED

PROPOSED ELEVATIONS 1:100@A3

REV 02