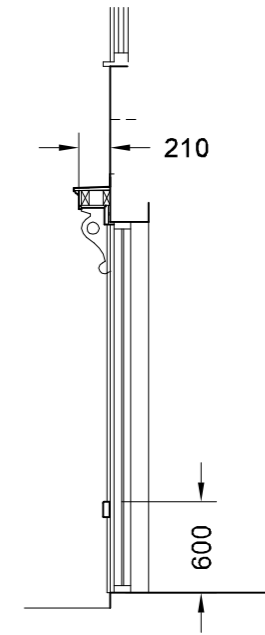




Proposed Materials :-
 Existing black powder coated aluminium shopfront already installed to remain
 New pilasters, fascia and corbel brackets to be painted timber with lead capping style similar to those removed.

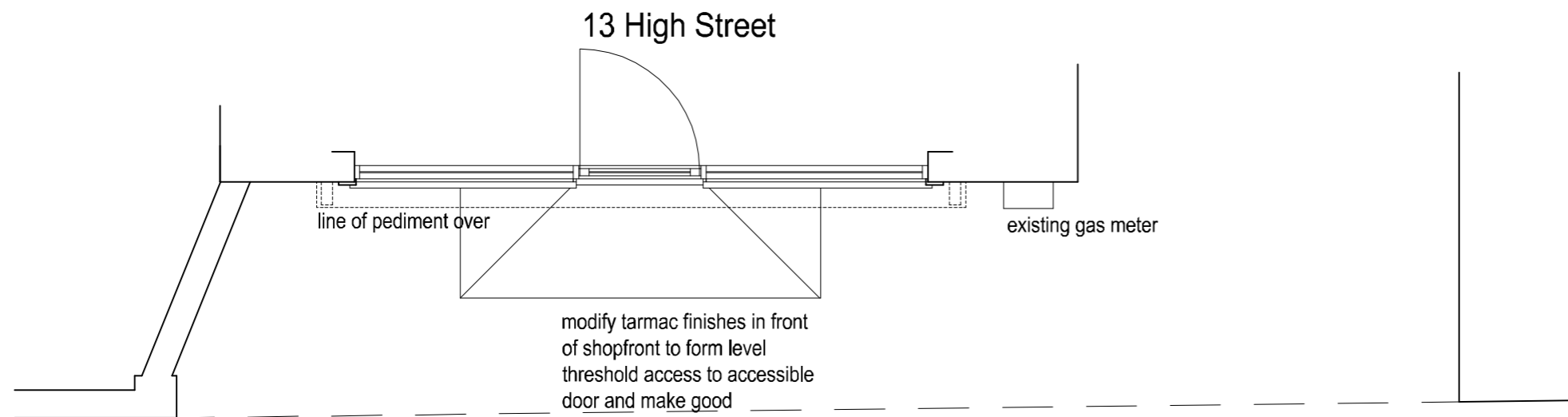
Read in conjunction with details on drawing 909-A3-003



Section as Proposed
 1:50

Elevation to High Street as Proposed 1:50

provide painted timber "cill" rail fixed to window frame set in front of glass to allow cleaning to visually break up glazing



Ground Floor Layout as Proposed 1:50

