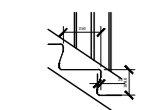


**EXTERNAL FINISHES:**  
 Cladding  
 Kingspan Quadcore insulated cladding panels.  
 Colour Merlin Grey  
 Flashings per manufacturer's literature

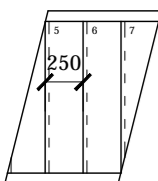
**Roof**  
 Kingspan KS1000RW insulated roof panels.  
 Colour Merlin Grey  
 Flashings per manufacturer's literature

**Windows (one hour fire resistant where indicated)**  
 White double-glazed argon-filled units with tilt & turn opening panes. Generally 1200x950mm.

**ACCESS & ESCAPE STAIR:**  
 18 No profiled risers at 166.60mm approx.  
 Going = 250mm (treads to have 20mm projection beyond riser)  
 Pitch = 33°  
 Handrail = Hardwood handrail 900mm above pitch line both sides. Handrail to extend 300mm beyond top and bottom of flight having profiled projections.  
 Protective Barrier = min. 900mm high on flight.  
 Nosings = 25mm  
 Width = 1000mm between handrails  
 Landings = Handrail 1100mm high, as noted. 1000mm wide by min. 1000mm long.



METAL STAIRCASE FORMED BY SPECIALIST FABRICATOR IN ACCORDANCE WITH ENGINEERS DETAILS.

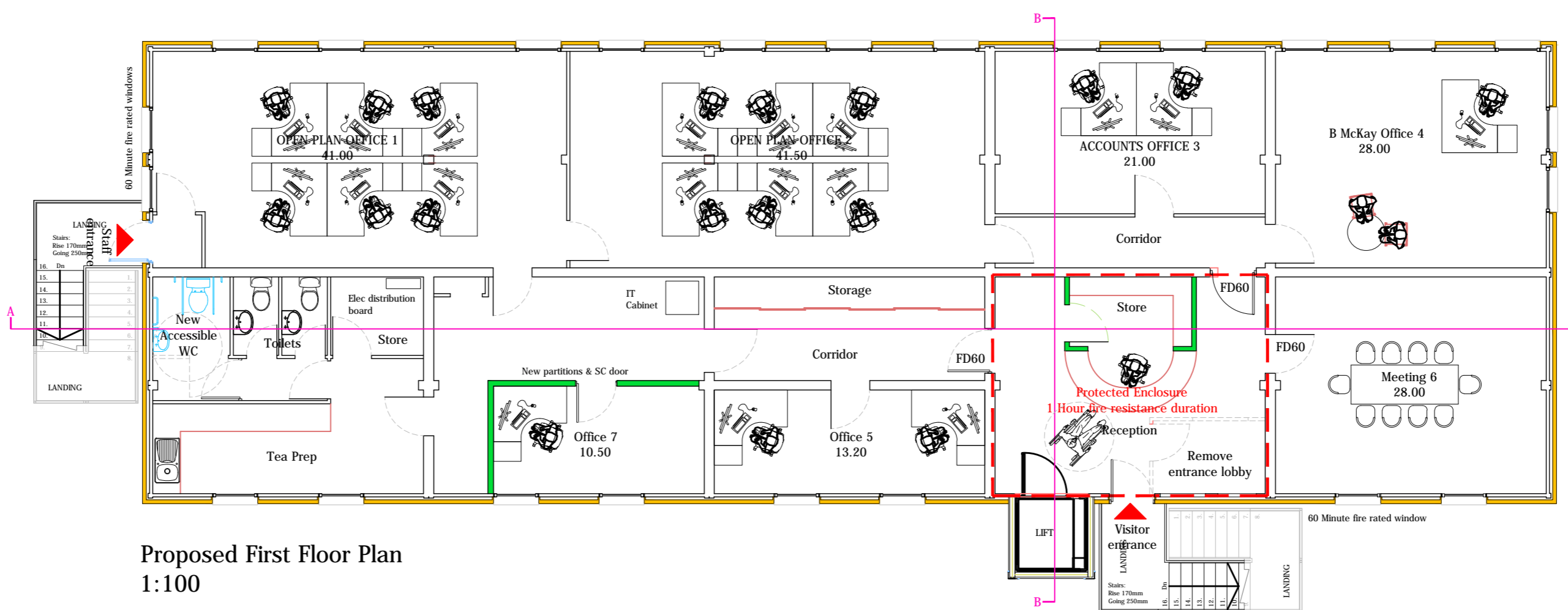


PLAN  
 Scale 1:50

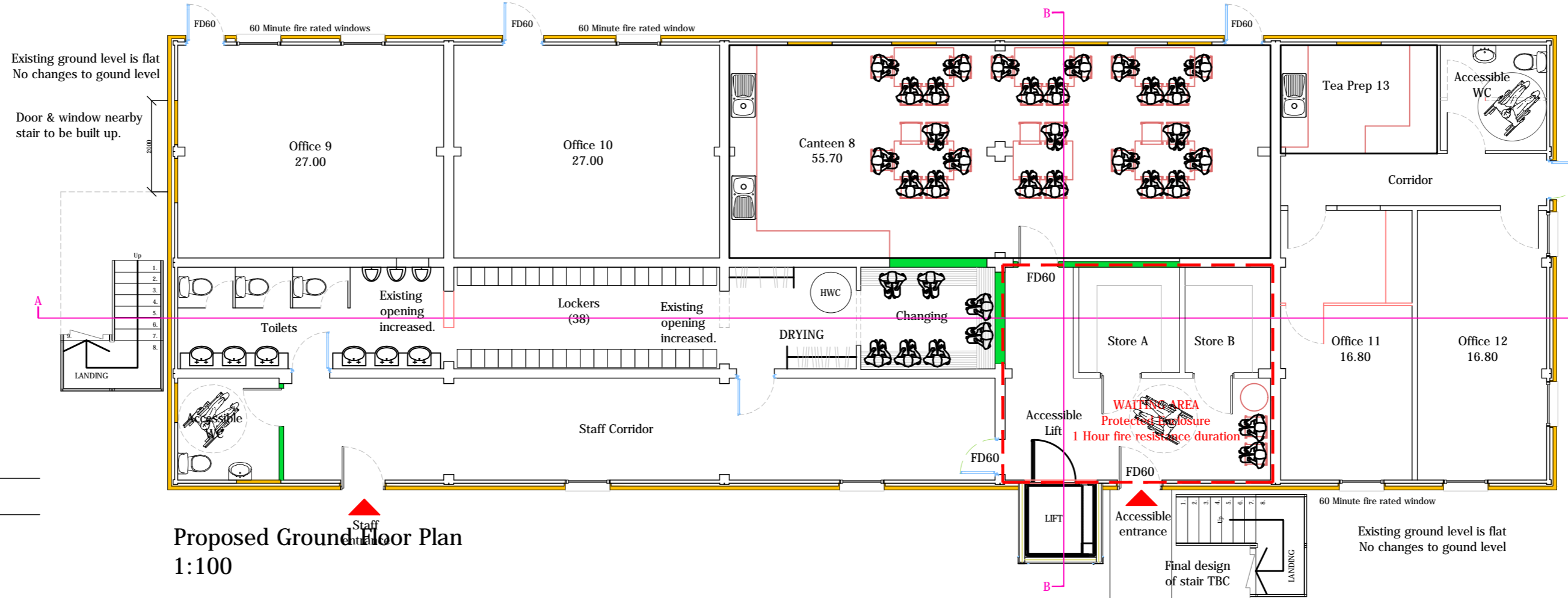
**Guarding:**  
 To be constructed, capable of resisting loads calculated in accordance with BS EN 1991-1-1 and the associated PD 6688-1-1.

**Balustrading:**  
 Formed with 12 mm square balustrades spaced apart not to allow a 100mm sphere to pass between.

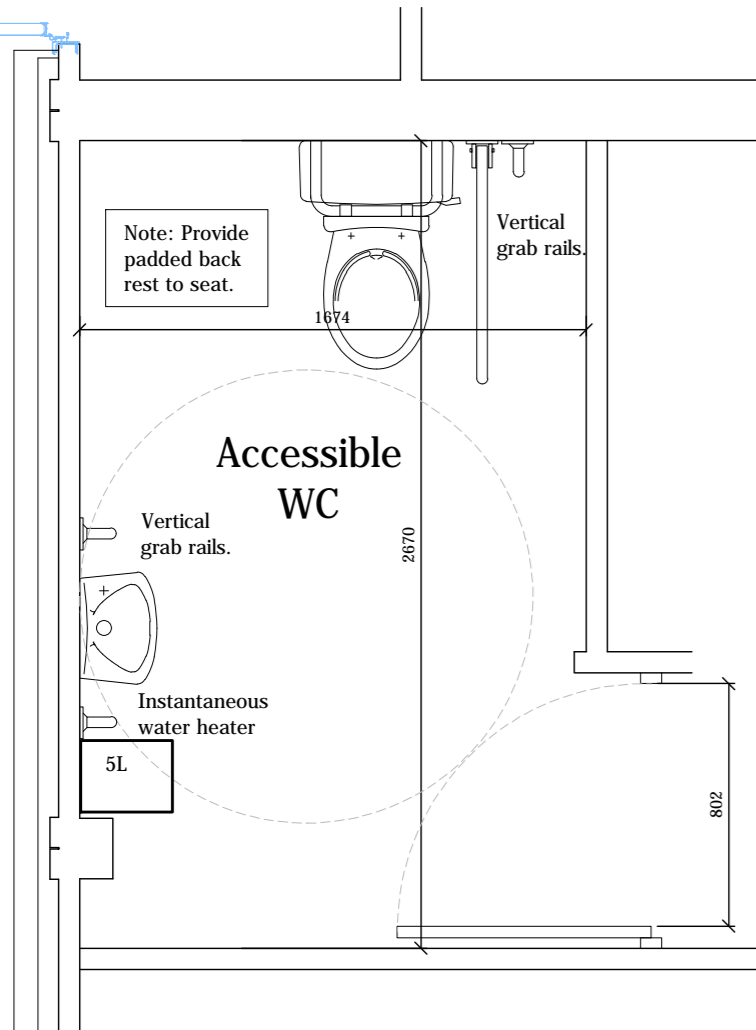
**NOTE:**  
 Refer to structural engineers details for steel sizes and setting out.



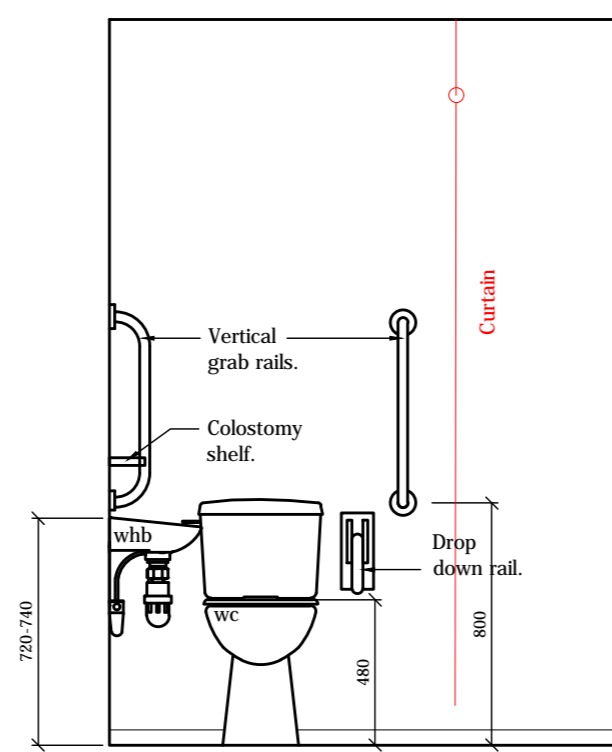
Proposed First Floor Plan  
 1:100



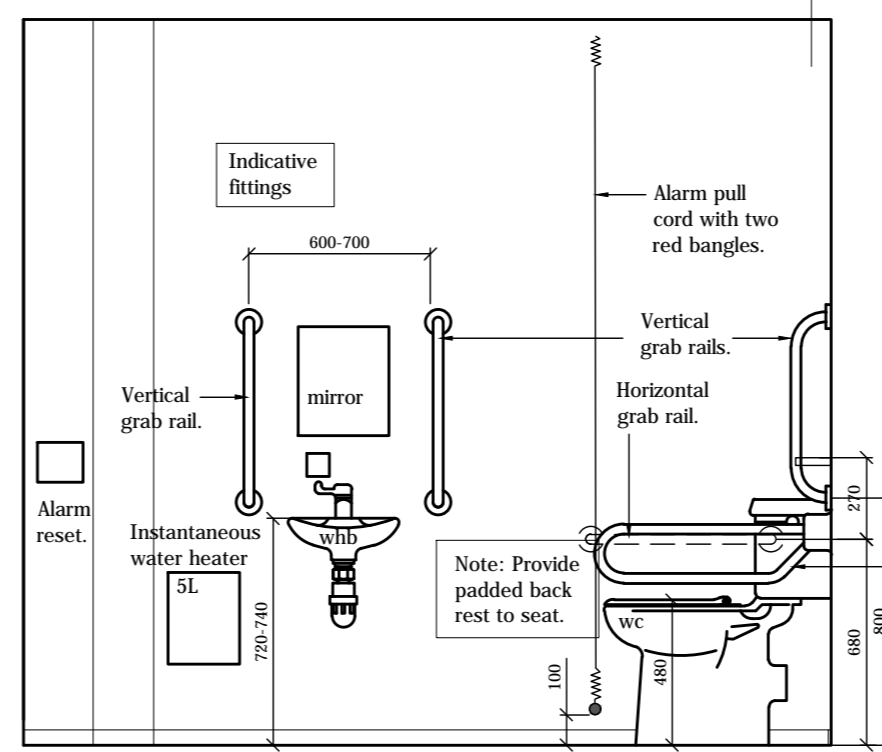
Proposed Ground Floor Plan  
 1:100



Accessible Toilet Floor Plan  
 Scale 1:25



Accessible Toilet Elevation A  
 Scale 1:25



Accessible Toilet Elevation B  
 Scale 1:25

**ACCESSIBLE TOILETS: 3.12.8**  
 Provided to include a WC with:

- a seat height of 480 mm, to assist in ease of transfer to and from a wheelchair; and
- a flush lever fitted to the transfer side of the cistern.

Sanitary facilities, fittings and surface finishes should be easily cleanable to allow a hygienic environment to be maintained. Accessible sanitary accommodation should be clearly identified by signage as accessible sanitary accommodation and contain a manoeuvring space of at least 1.5m by 1.5m, clear of any obstruction, including a door swing, other than a wall-mounted wash hand basin which may project not more than 300mm into this space and be fitted with fixed and folding grab rails, as shown. Grabrails should visually contrast against the adjacent wall surfaces and should be securely fixed capable of accommodating the transfer weight of an adult and be fitted with an assistance alarm which can be operated or reset when using a sanitary facility and which is also operable from floor level. The alarm should have an audible tone, distinguishable from any fire alarm, together with a visual indicator, both within the sanitary accommodation and outside in a location that will alert building occupants to the call.

**NOTE:**  
 Drawings to be read and fully understood before work commences. Figured dimensions to take preference over scaled dimensions. All dimensions and spot levels to be checked on site by Contractor prior to construction. Existing drainage and services positions to be checked on site by Contractor prior to work commencing. Any discrepancies to be reported back to this office. All dimensions given in millimetres unless noted. Only drawings stamped 'APPROVED' or 'CONSTRUCTION ISSUE' to be used for building purposes.

**CONSTRUCTION NOTES**

**INTERNAL PARTITIONS**  
 New internal partitions formed in 75x47mm C24 timbers with 50mm mineral wool insulation between studs. Lined both sides with 12.5mm plasterboard; all joints taped and filled.

**INTERNAL DOORS**  
 New doors. Internal doors generally 1981x838mm solid core timber doors with self-closing hinges unless otherwise stated. FRSC (Fire resistant self closing doors specified separately).

**WINDOWS**  
 Generally double-glazed argon-filled UPVC units with tilt & turn openings. All with obscured glass.  
**Note:**  
 Windows within 2.0m of escape staircases or within protected zone to be 60mins fire resistant.

**LOCKERS**  
 38 Lockers throughout (300x500mmx1800mm)

**BENCHES**  
 7250 Lin/m (400mm deep) benches throughout

**FINISHES**  
 Heating - Existing electric radiators retained  
 Skirtings - Coved vinyl throughout  
 Facings - White painted MDF

**ELECTRICAL WORKS: 4.5.1-4.5.3**  
 All electrical fitments and wiring installed, constructed, designed and tested in accordance with the latest edition of I.E.E. Regulations & B.S. 7671 : 2008 as amended. Any pvc sheathed electrical wiring to be protected to avoid contact with polystyrene insulation.

**SANITARY PROVISION: 3.12.2**  
 Occupancy capacity is 30 people. Say 5 females and 25 males. Minimum female provision requirement is 1wc and 1 whb. Minimum male provision requirement is 2wc's and 2 whb's & 1 urinal

OFFICE SPACE	AREA
1 Open plan office	41.00
2 Open plan Office	41.50
3 Accounts office	21.00
4 Office for B McKay	28.00
5 Office for HSEQ	13.20
6 Boardroom	28.00
7 Office	10.50
8 Yard staff canteen	55.70
9 Customer Office	27.00
10 Customer Office	27.00
11 Offices	16.00
12 Office	16.80

rev	date	description	by	chkd by
Client:		Independent Oilfield Services		
Project:		Refurbishment of Existing Administration Building at Longside Airfield, Peterhead.		
Drawing Title:		ACCESSIBLE TOILET DETAILS GROUND & FIRST FLOOR PLANS		
Stage:	PLANNING	Date:	NOV 2023	
Project No:	4934	Drawing No:	PL02	Revision:
Scale:	NOTED	Drawn:	AA	Checked:
				Size:
				A2

**McADAM DESIGN SCOTLAND LTD**  
 Commercial and Residential Chartered Architects

70 King Street, Peterhead AB42 1QJ  
 Tel: 01779 475157  
 info@mcadamedesign.com  
 www.mcadamedesign.com

All drawings remain copyright of McAdam Design (Scotland) Ltd and must not be altered or reproduced without written consent. We take no responsibility for any misuse of the drawings by any third party resulting in infringement of our copyright.