



CRAIG HAMILTON ARCHITECTS

MAWLEY HALL: TREE HOUSE

DESIGN AND ACCESS STATEMENT

NON-MATERIAL AMENDMENT APPLICATION FOR THE INSTALLATION OF A
CONICAL METAL HOPPER BENEATH THE APPROVED EXTERNAL SHOWER AND
FOR A CHAIN CONNECTION TO BELOW GROUND DRAINAGE TREATMENT.

November 2023

Craig Hamilton Architects Ltd

Managing Director: Dr Gail Kenton DipArch MPhil(Cantab) PhD(Cantab) RIBA

Directors: Craig Hamilton BArch RIBA & Diana Hulton BCom BAFA MA

Senior Associate: Ettore Brunetti RIBA; Associate: Edmund Browne March PGDip RIBA

HEAD OFFICE: Coed Mawr Farm, Hundred House, Powys LD1 5RP

HAMPSHIRE OFFICE: Old Stable Block, IncuHive Space, Hursley Park Road, Hursley, Hampshire SO21 2JN

Tel: 01982 553312

Company Registered No.4878642 in England.

CONTENTS:

- 1.0 INTRODUCTION
 - 2.0 CONSULTATIONS
 - 3.0 PROPOSALS
 - 3.1 Materials & Construction
 - 4.0 ACCESS STATEMENT
 - 5.0 CONCLUSION
- Appendix A: Shower Cage Plans & Elevations

1.0 INTRODUCTION:

1.1 The Tree House received Planning Permission on 25th August 2020 (ref. 20/02570/FUL). Since then, it has been implemented.

An NMA (ref. 23/03317/AMP) was approved on 28th July 2023 for:

- The installation of a spiral staircase to north side of tree house.
- Reconfiguration of the staircase to south side.
- Installation of an occasional use external shower cage to the west side.
- Omission of a second west satellite platform and connecting Burma bridge.
- Omission of a walkway to east.

Evolving construction requirements have resulted in the following minor amendment:

- It is proposed to install conical metal hopper beneath the base slat boarding of the occasional use external shower, that leads to a chain link, connected to the ground, from which the discharge will be connected directly into the below ground local treatment plant.

2.0 CONSULTATIONS:

2.1 Gerald Eve LLP have engaged in an informal discussion with the Planning Officer at Shropshire Council, Mr Trystan Williams, who confirmed that the application should be a Non-Material Amendment application.

Preliminary discussions have taken place with Andy Jones of Shropshire Building Control, who has confirmed that this solution may be progressed further.

3.0 PROPOSALS:

3.1 MATERIALS & CONSTRUCTION:

The approved shower cage is constructed from brass, with an oak deck.

The conical hopper below the shower cage will be fabricated in brass to match the cage. It is anticipated that the chain will be in painted galvanised steel.

The team assessed multiple drainage options and it is considered that the hopper and chain link would be more aesthetically preferable than rigid pipes and provide better water control than a free fall drop to a catchment pit.

4.0 ACCESS STATEMENT:

4.1 There is no variation to access from that approved by the NMA in July 2023.

5.0 CONCLUSION:

5.1 The hopper and chain link is intended to maintain a sense of suspension from above, rather than support from below with potentially less sightly fixed pipework.

The minor amendment made as a result of construction requirements has not impacted the overall design intent of the Treehouse.

APPENDIX A: SHOWER CAGE PLANS & ELEVATIONS WITH HOPPER BELOW

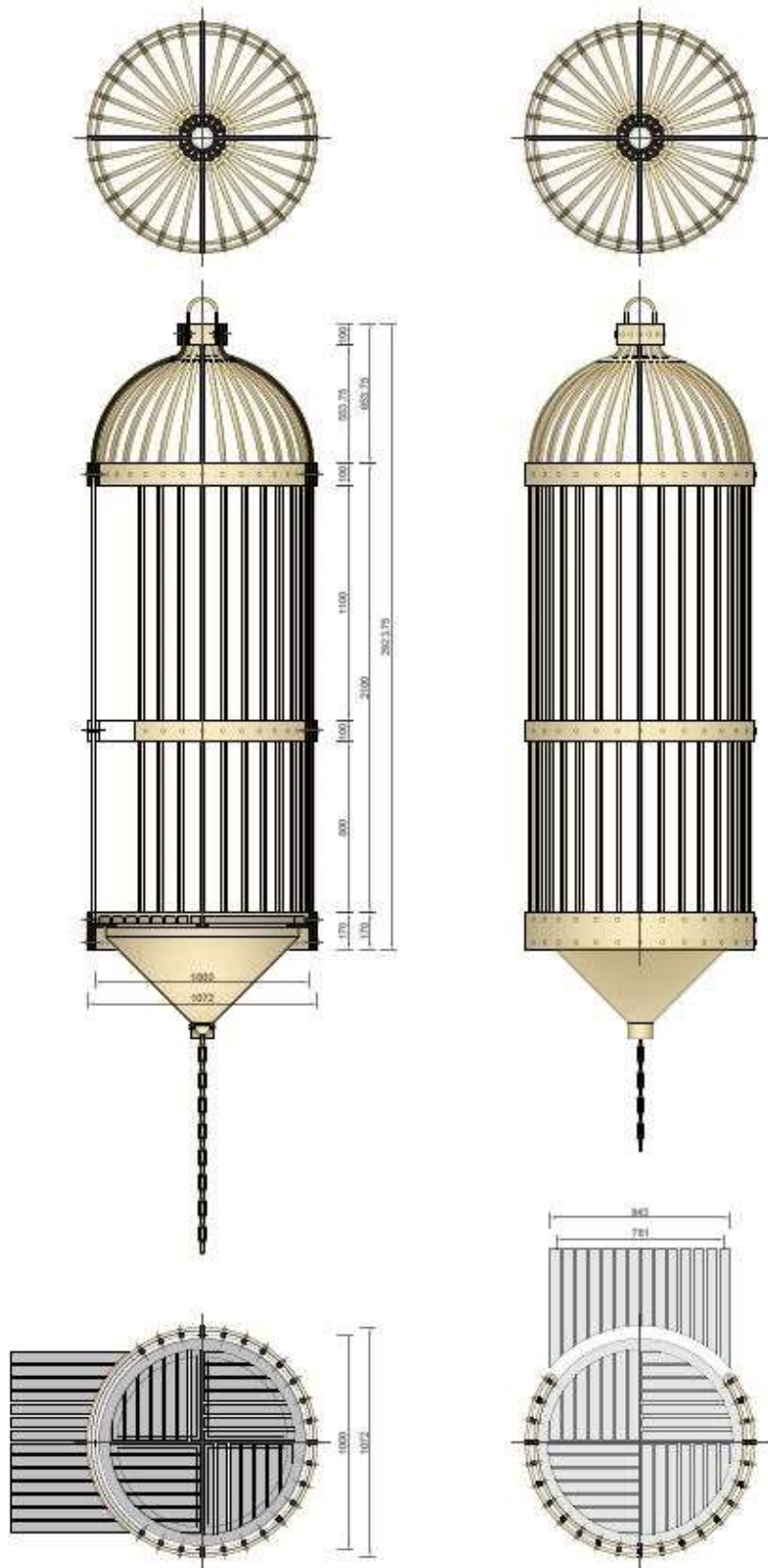


Fig. A.1: Approved shower cage and proposed conical hopper at the shower base.

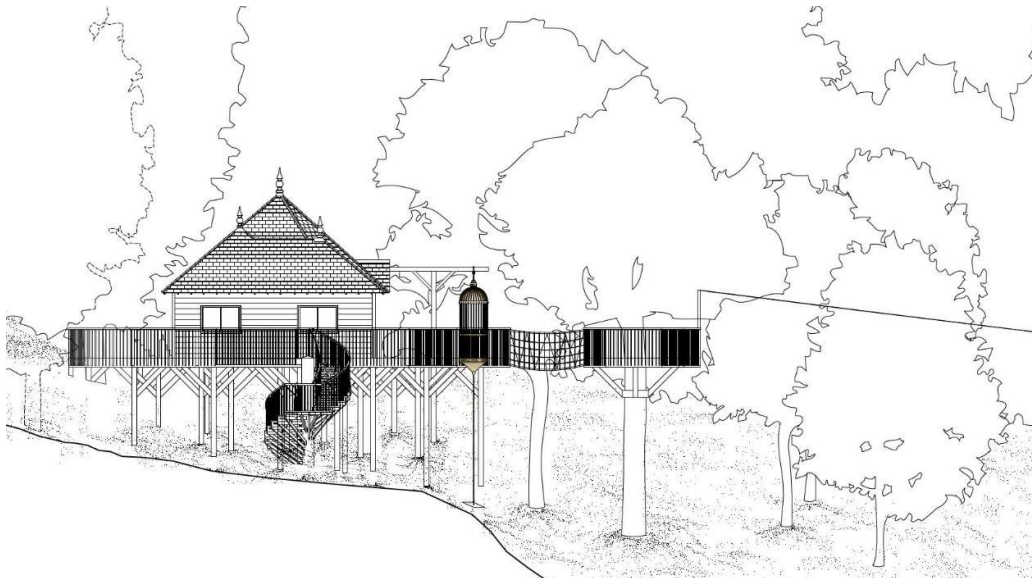


Fig. A.2: North elevation illustrating the approved shower cage and proposed conical hopper.



Fig. A.3: West elevation illustrating the approved shower cage and proposed conical hopper.

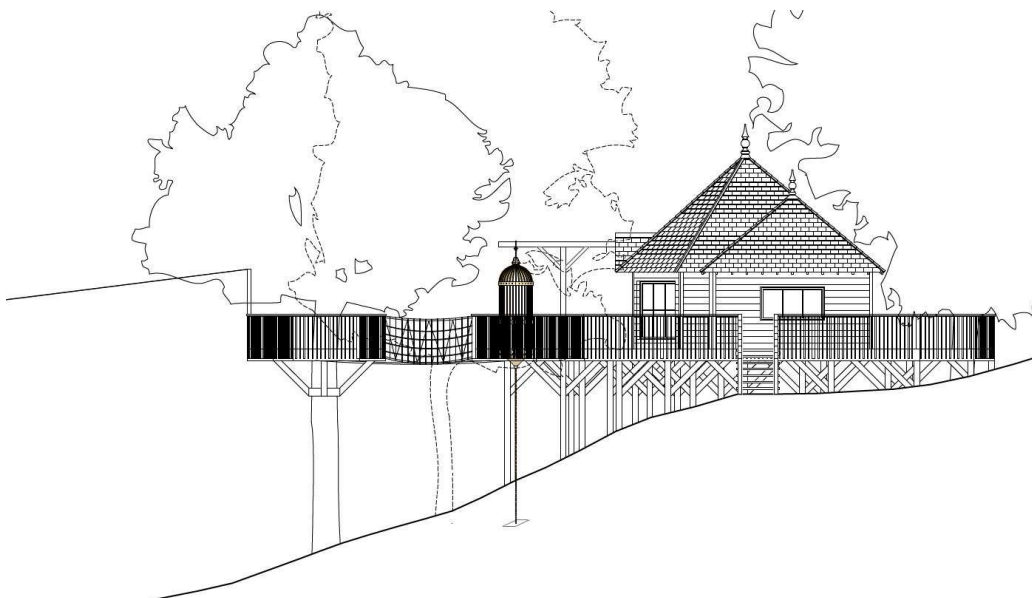


Fig. A.4: South elevation illustrating the approved shower cage and proposed conical hopper.