

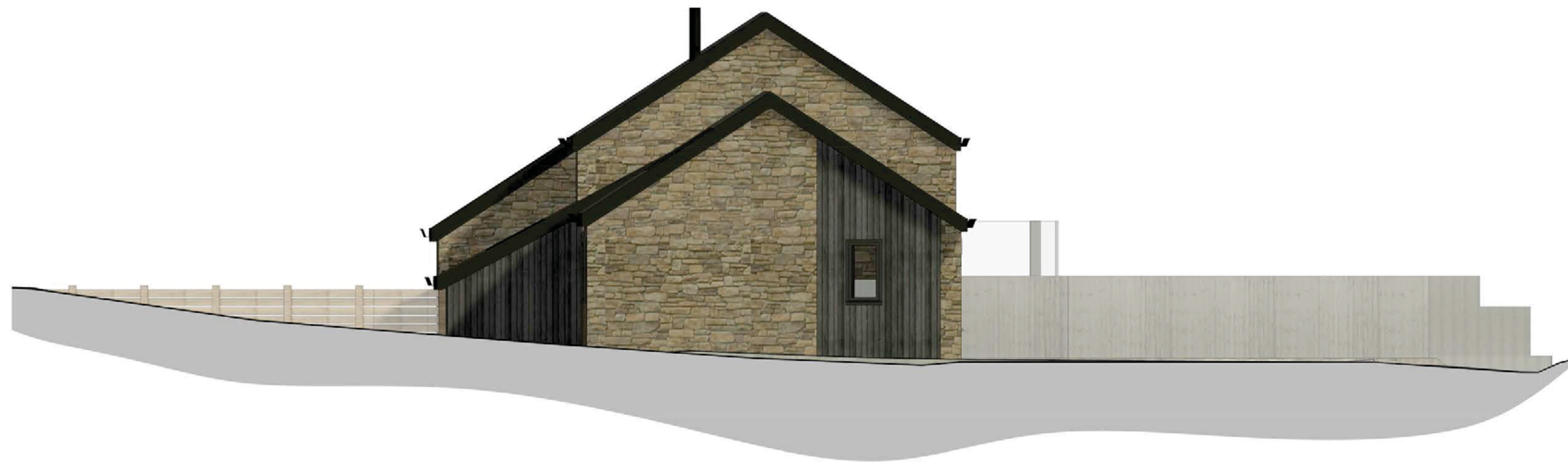
PROPOSED MATERIALS:

- AREAS OF STONEMASONRY TO MATCH MATERIAL & PATTERN OF EXISTING
- VERTICAL TIMBER BOARDING IN NATURAL OR STAINED FINISH
- GREY NATURAL SLATE ROOFING
- METAL OR BLACK uPVC RAINWATER GOODS - DOWNPIPE POSITIONS TBC
- WINDOWS & DOORS PAINTED TIMBER OR ALUMINIUM
- CONSERVATORY STYLE ROOF WINDOWS
- BLACK METAL WOODBURNER FLUE
- PAINTED TIMBER OR ALUMINIUM FASCIAS
- SLATE VERGE OR ALUMINIUM/PAINTED TIMBER BARGE BOARDS
- ROOF LEVEL EXTRACT FANS FITTED WITH FLUSH SLATE OR CUSTOM LEAD VENTS
- WALL DUCTS FOR EXTERNAL FANS/VENTILATION FITTED WITH CLAY OR METAL GRILLES
- METAL RAILINGS & GUARDING TO EXTERNAL STEPS & LEVEL CHANGES
- METAL BALCONY WITH GLAZED BALUSTADING CONNECTED TO RESET STONE STEPS WITH NEW METAL STAIR LINK



1 South Elevation

REF: 3-201-A
SCALE: 1:50



2 West Elevation

REF: 3-201-A
SCALE: 1:50



THE CONSERVATION DIVISION OF:
CAD ARCHITECTS LTD, COURTTLEIGH HOUSE, 74-75 LEMON STREET
TRURO, CORNWALL, TR1 2PN
CALL: 01872 630 041
MAIL: info@cadheritage.co.uk
WEB: www.cadheritage.co.uk

RIBA 
Chartered Practice

REV	DESCRIPTION	DATE	INS
1	Proposed conversion of existing barns to dwellings at Wood Farm, Redruth Road, Wendron, TR13 0PT	11/23	FC
2	Avenue Developments	1:50 @ A1	SM
3	As Proposed Barn 1 South & West Elevation		

TYPE	REFERENCE NUMBER	REVISION
PLANNING	3203-3-201-A	