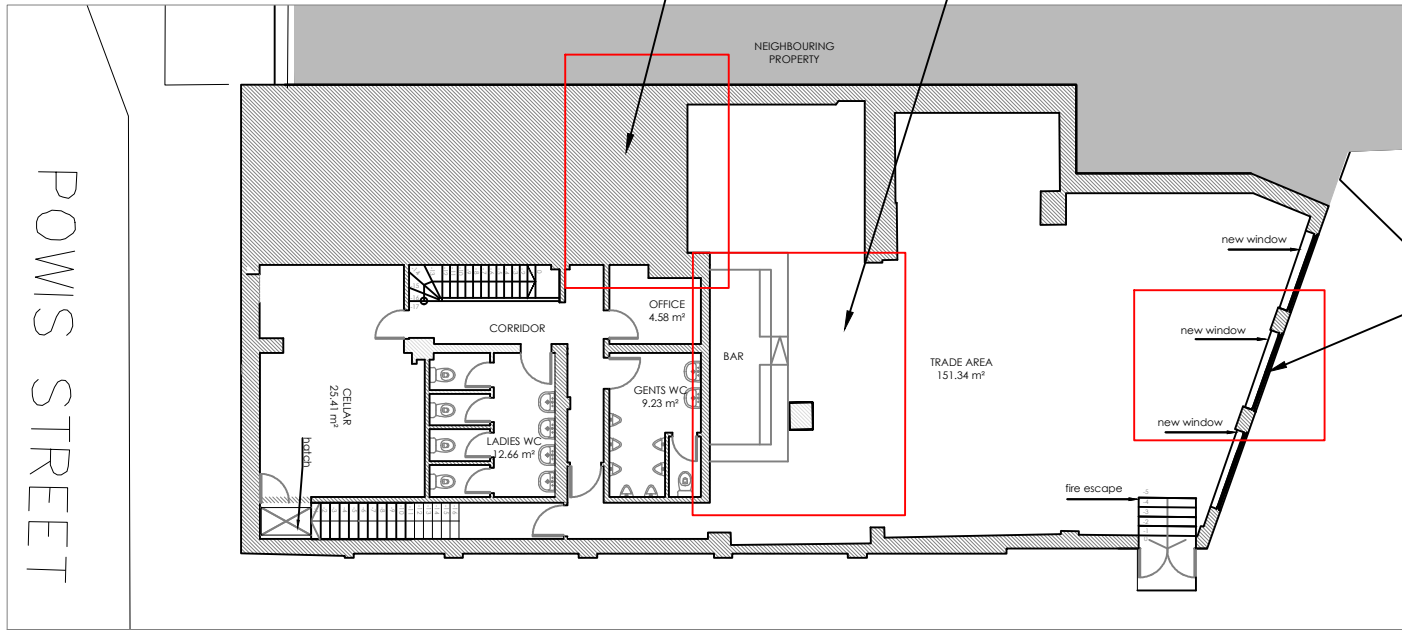
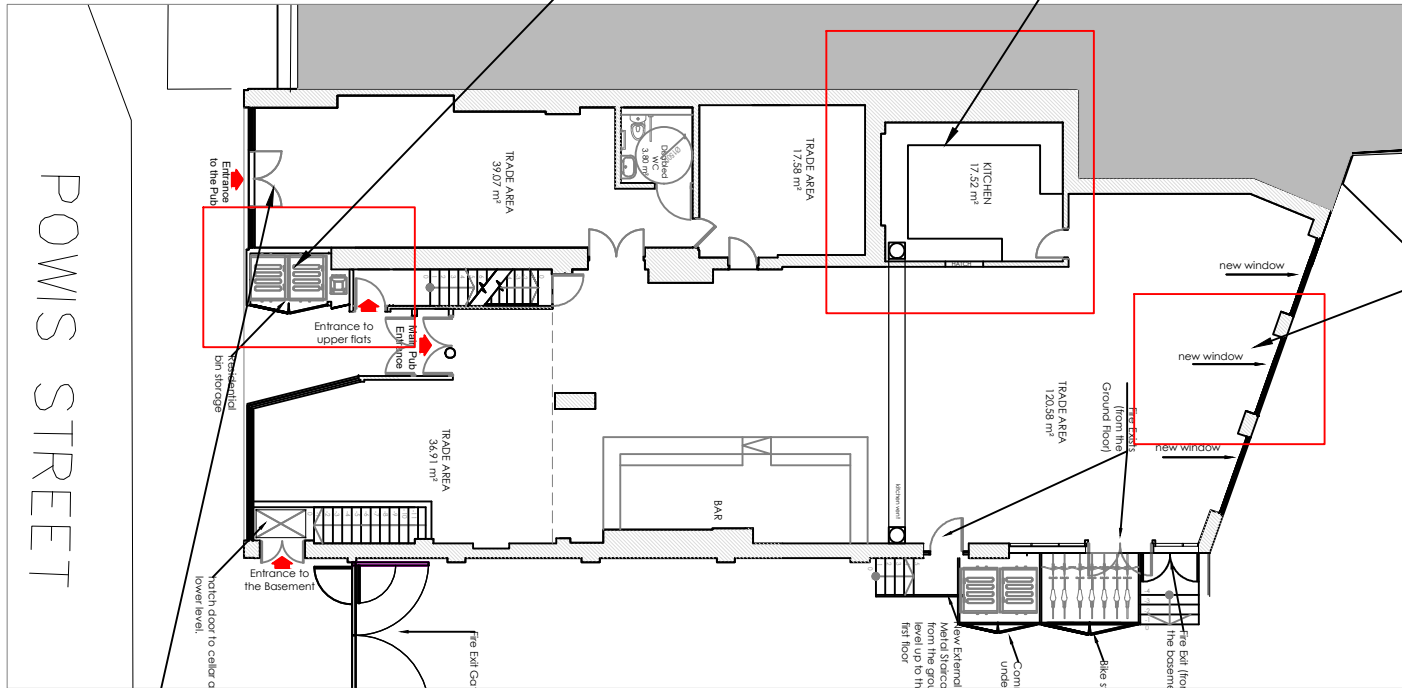


Previously Approved Basement with change areas marked
SCALE 1:200



Previously Approved Ground Floor with change areas marked
SCALE 1:200



Previously Approved South Facade (Front) with change areas marked
SCALE 1:200



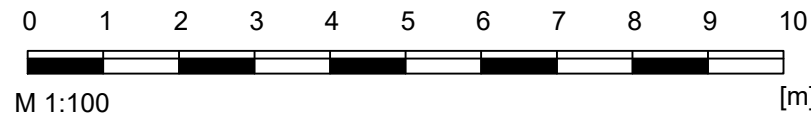
Previously Approved North Facade (Rear) with change areas marked
SCALE 1:200



Replaced the double door for a single door due to the relocation of the bins.

reduce the width of the window due to structural restrictions

NOTES :
 - All works to be carried out in accordance with current Building Regulations
 - All dimensions and levels to be checked on site before commencing any work and notify the architect of any errors, omissions or discrepancies.
 - The drawings to be read in conjunction with contract documents, project working drawings, specification and all consultants/specialist and engineers drawings, details and specification.
 - This drawing is made on behalf of Antic London, 77 Malham Road, Forest Hill, London.
 - Do not scale from this drawing.



Issue Notes

Antic London
 77 Malham Road,
 Forest Hill,
 London, SE23 1AH

Address :
 132-136 Powis Street, London, SE18 6NL

PROJECT NAME
 PW-NMA

Date:
 23.11.2023

Drawing
 Drawing no.
 Scale

Comparison drawings
 PW 300 D01
 1:200 @ A3