

# Highway Condition Survey

020-Lawnwood House, Bristol

The survey has been undertaken on Friday the 10th of November 2023 at 3pm by a sunny and clear sky.

The survey covers the immediate vicinities of the development site and has been extended to the end of Tyndall Road on one side and to the junction between Brixton Road and Clayton Street on the other side.

All along the way around the development site, we have noted that the highway, footway and kerbs were generally in a very poor condition.

We have documented our observations in the following pages of this report, displaying photos of roads and adjacent footpaths. A plan on which each photo angle and position have been identified.

# TYNDALL ROAD – Part 1



1



2



3



4



5

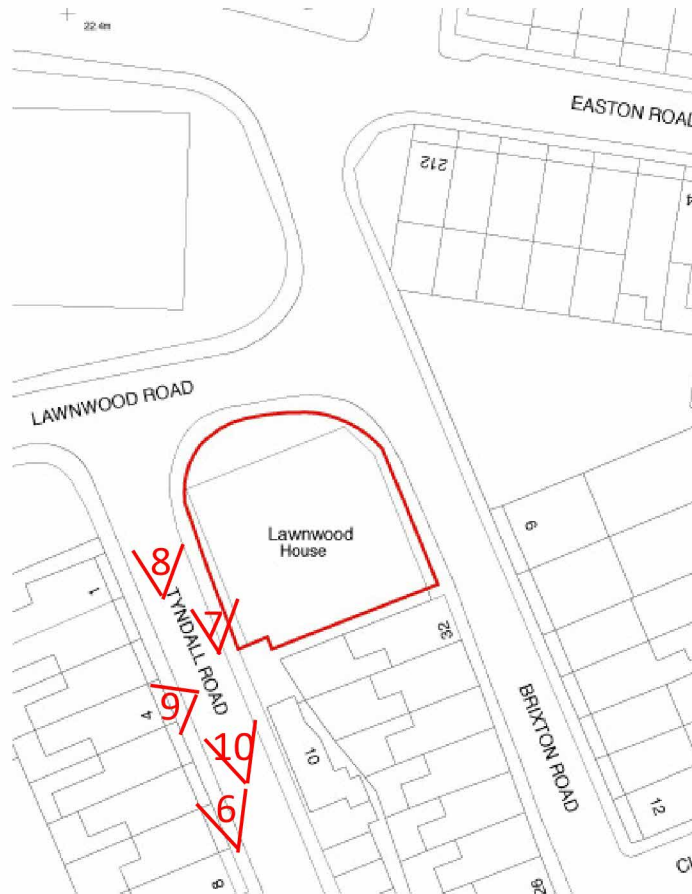
TYNDALL ROAD – Part 2



6



7



8



9



10



TYNDALL ROAD – Part 3



12



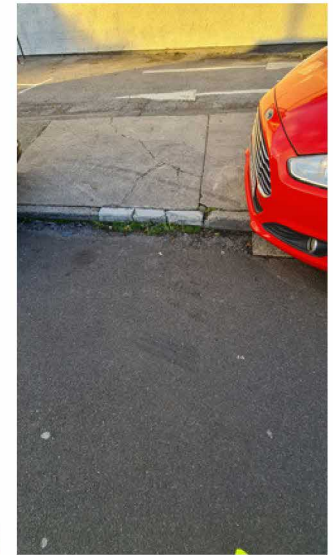
11



13



14



15

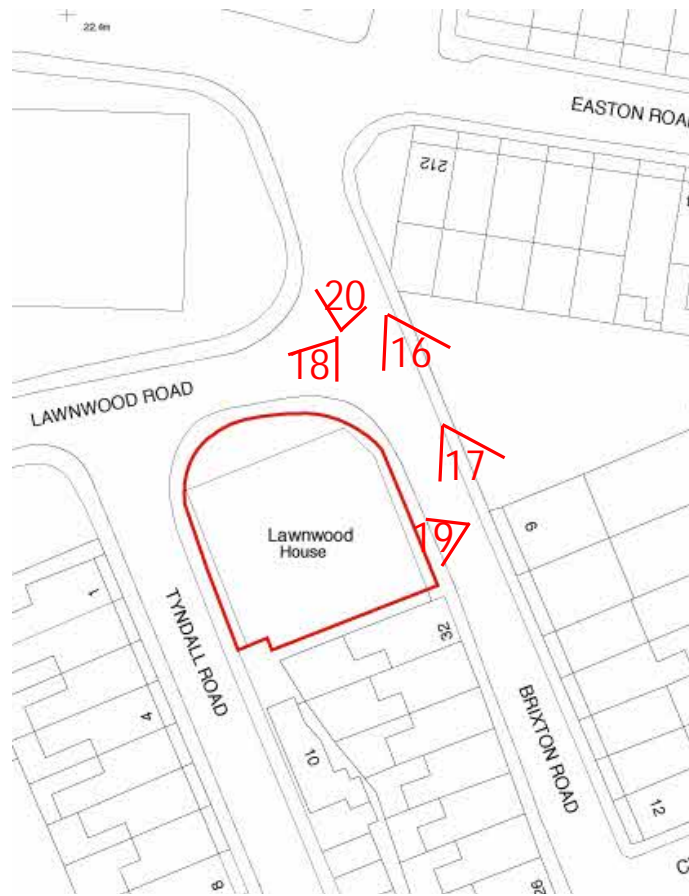
TYNDALL ROAD – Part 4



16



17



19



18



20



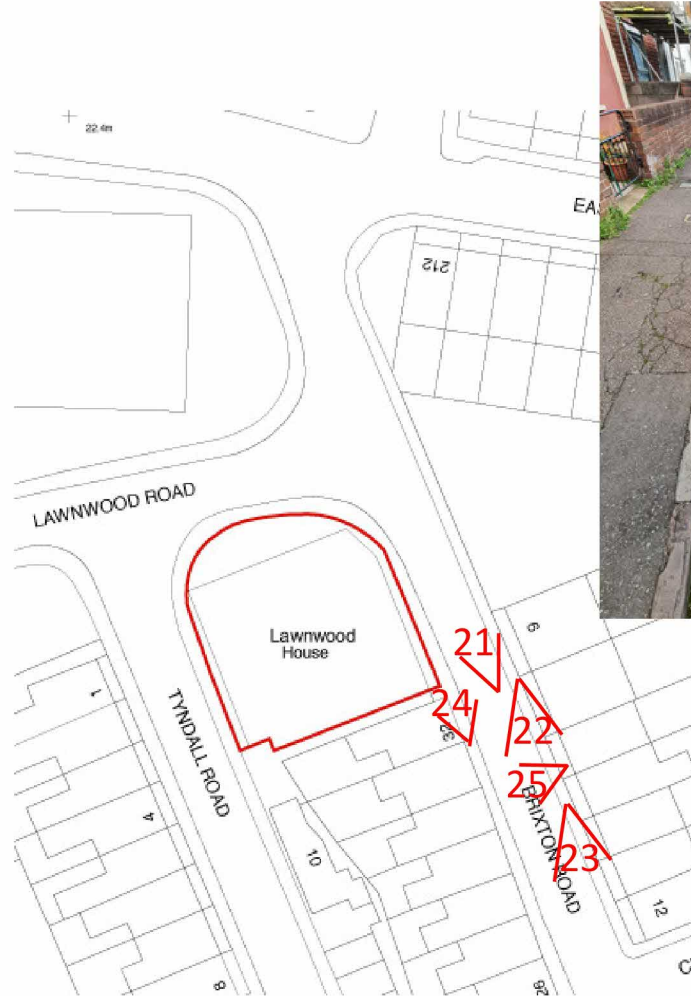
TYNDALL ROAD – Part 5



21



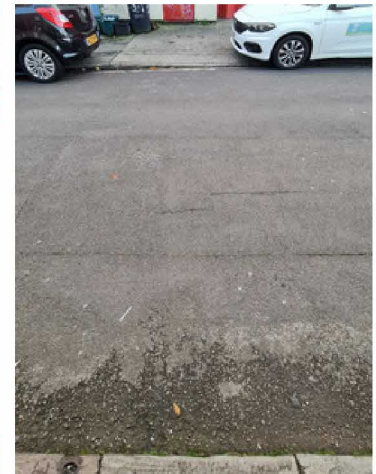
22



23



24



25

TYNDALL ROAD – Part 6



26



27



28



29



30





TYNDALL ROAD – Part 7



31



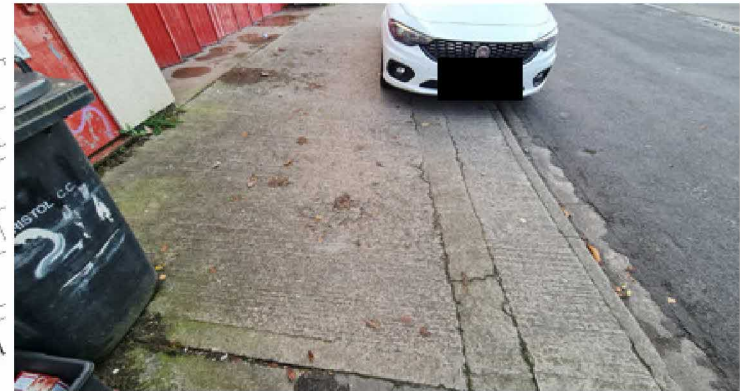
32



33



34



35



TYNDALL ROAD – Part 8



36



37



38



39



40