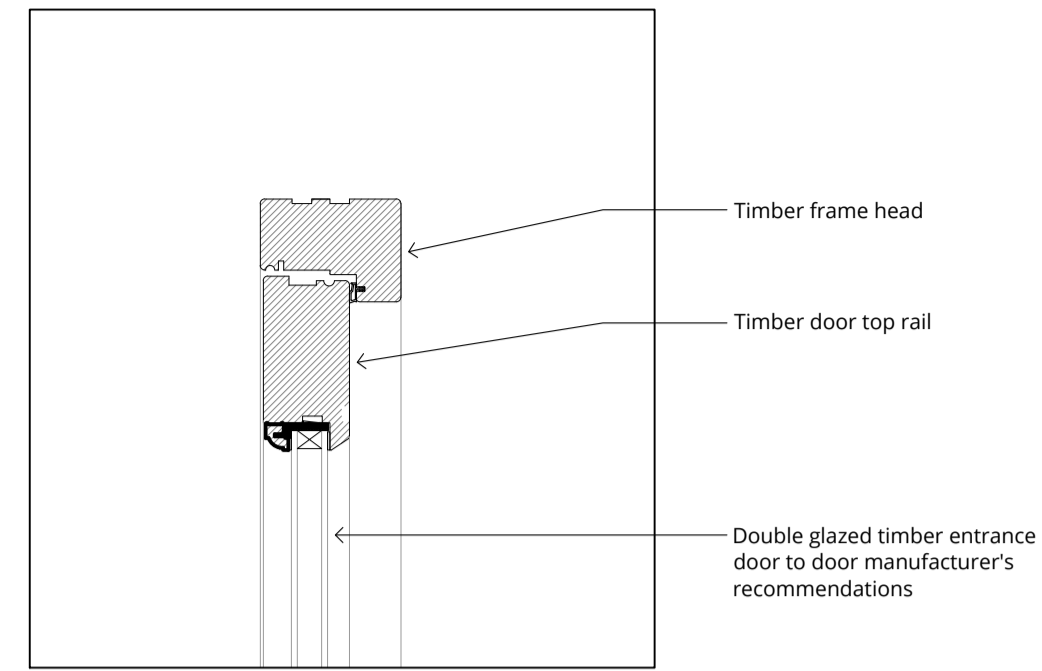
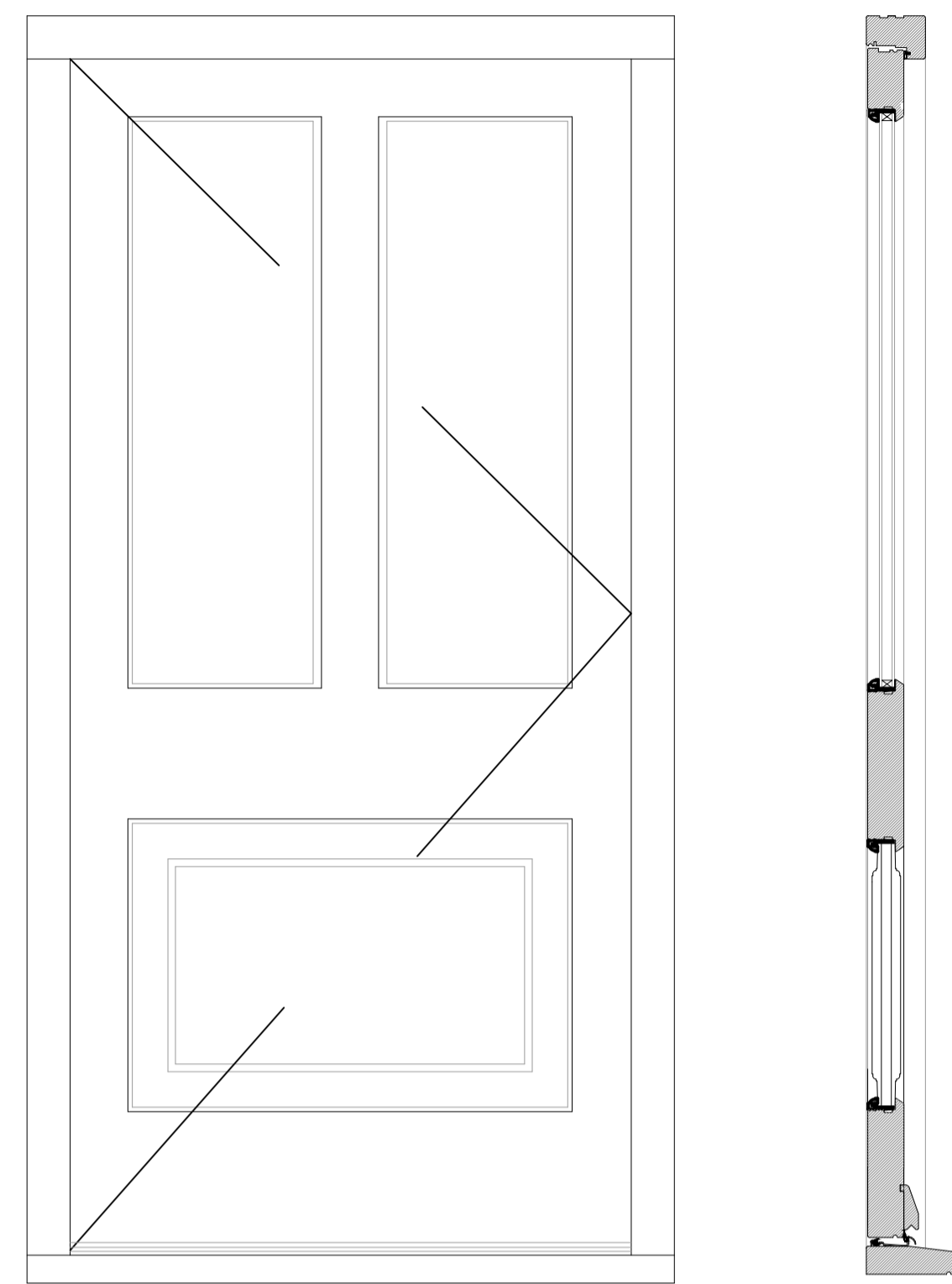
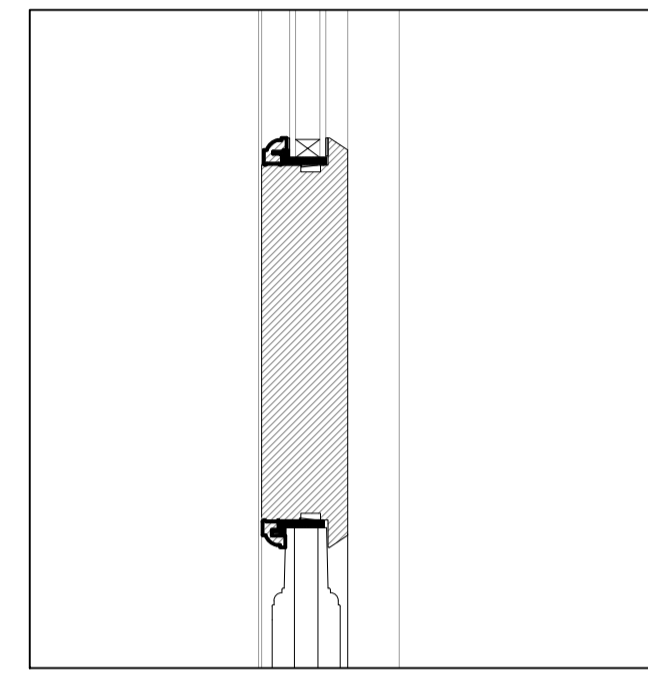


NOTES:
ALL LEVELS, ANGLES AND DIMENSIONS TO BE CHECKED
ON SITE PRIOR TO COMMENCEMENT OF WORKS.

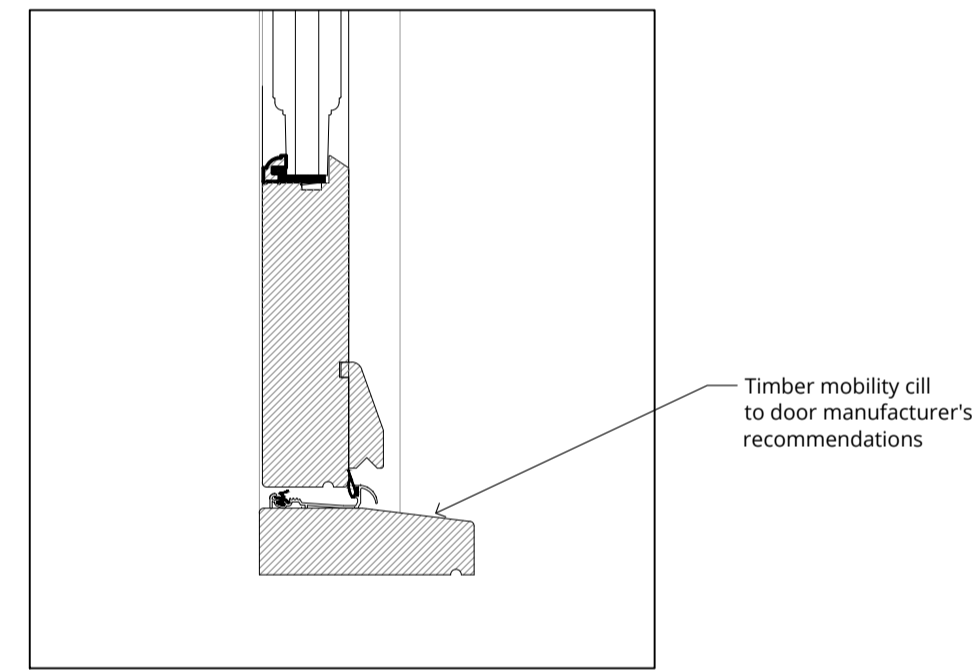
THIS DRAWING IS TO BE READ IN CONJUNCTION WITH
ALL RELEVANT STRUCTURAL ENGINEERS AND
MECHANICAL AND ELECTRICAL ENGINEERS DRAWINGS,
DETAILS AND SPECIFICATIONS.



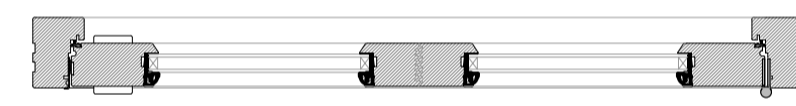
1F Head detail
1:5



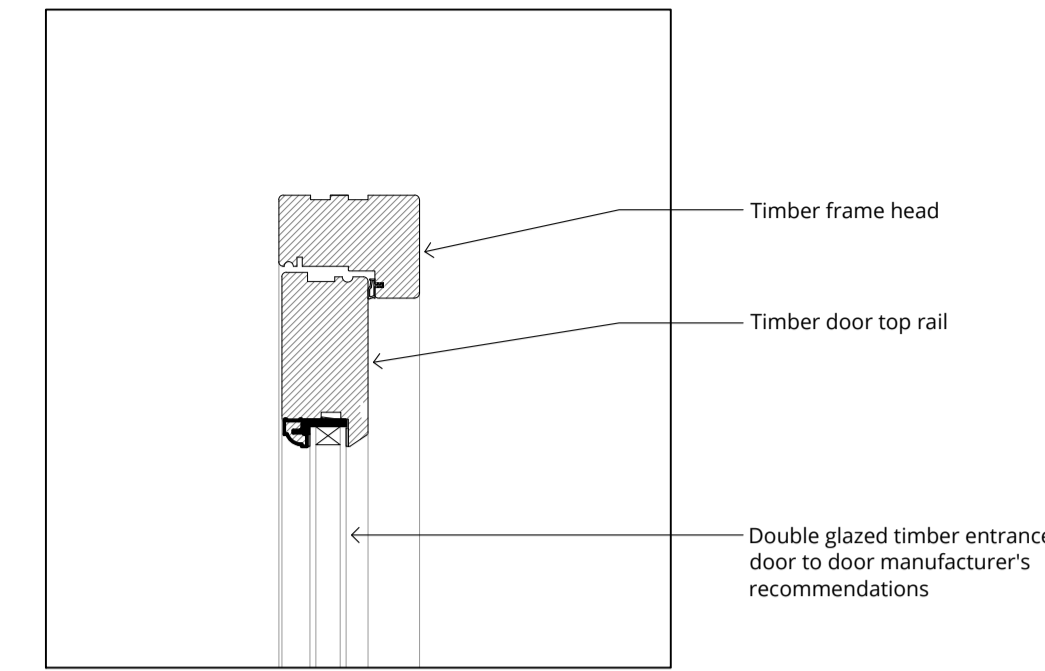
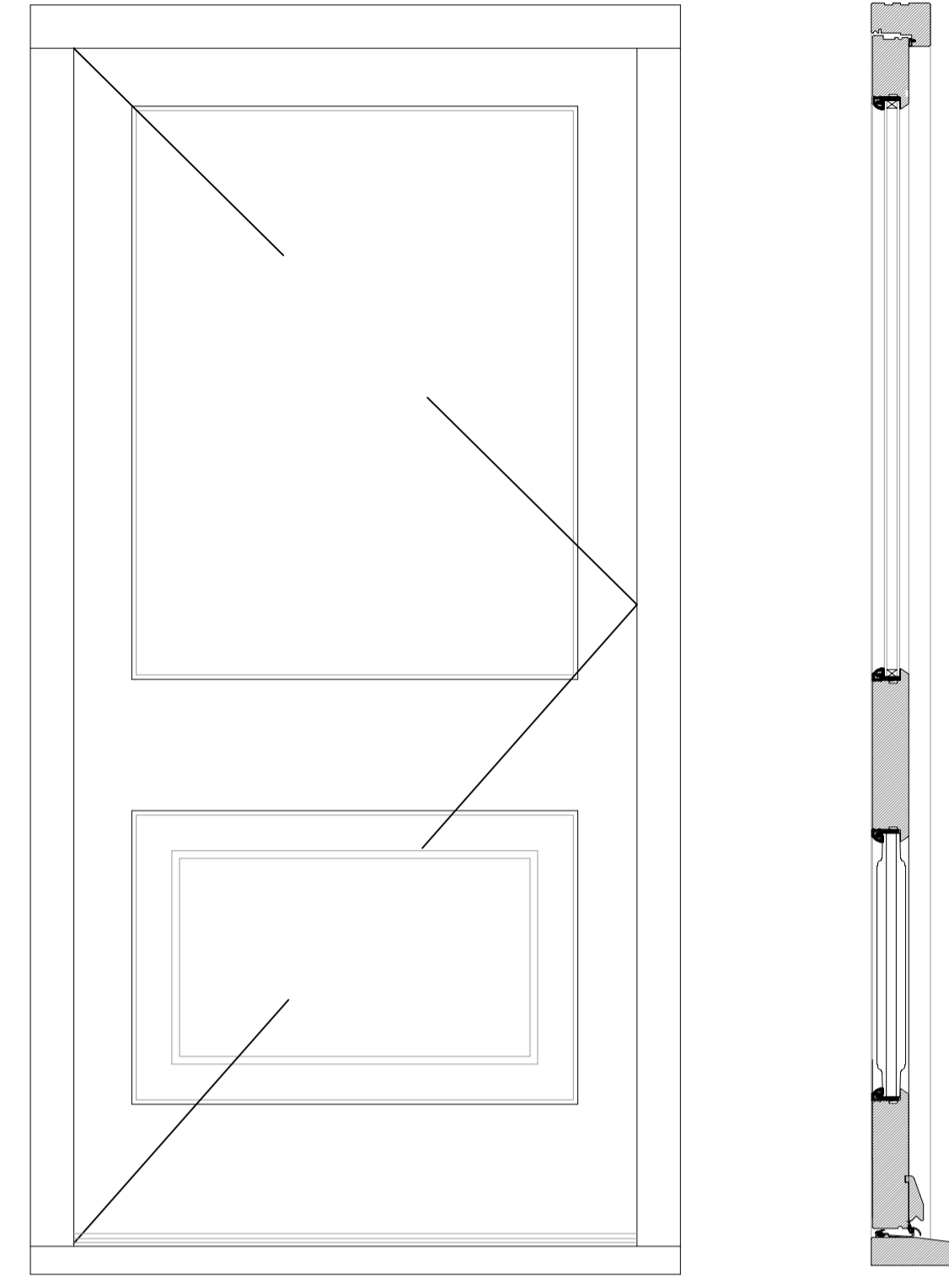
1E Typical detail
1:5



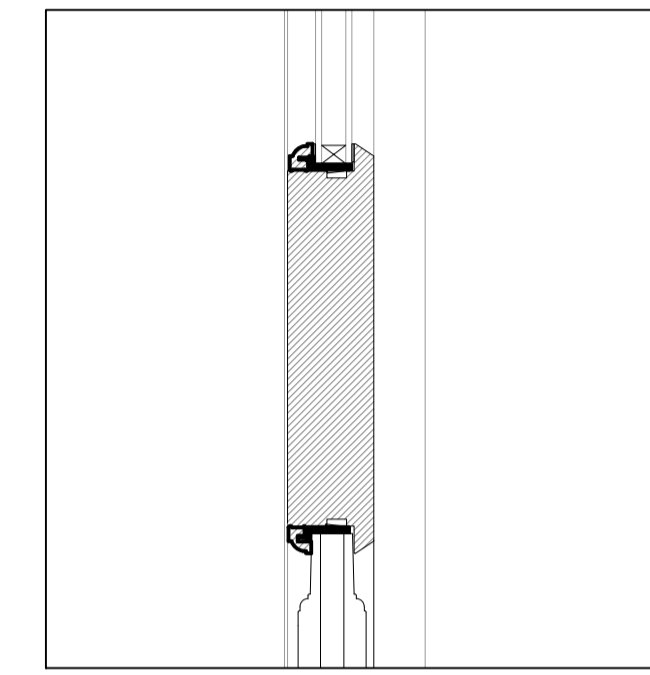
1D Threshold detail
1:5



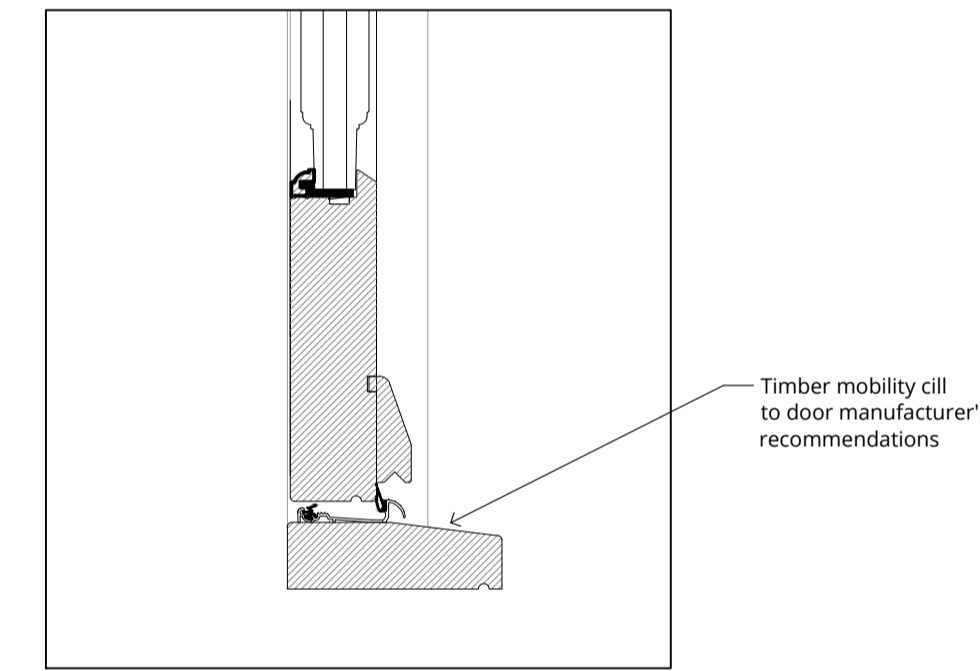
Proposed External doors - Typical details
Scale 1:10



2E Head detail
1:5



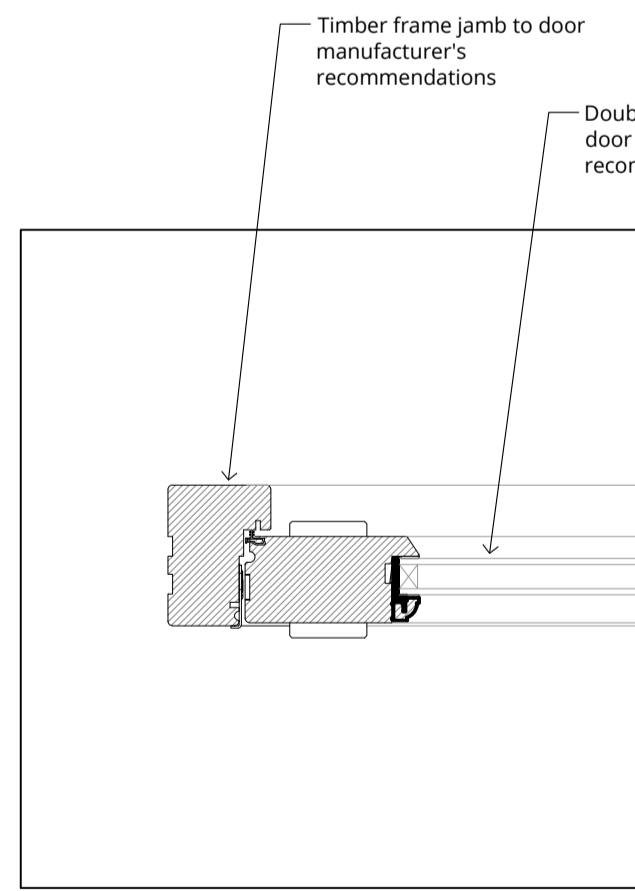
2D Typical detail
1:5



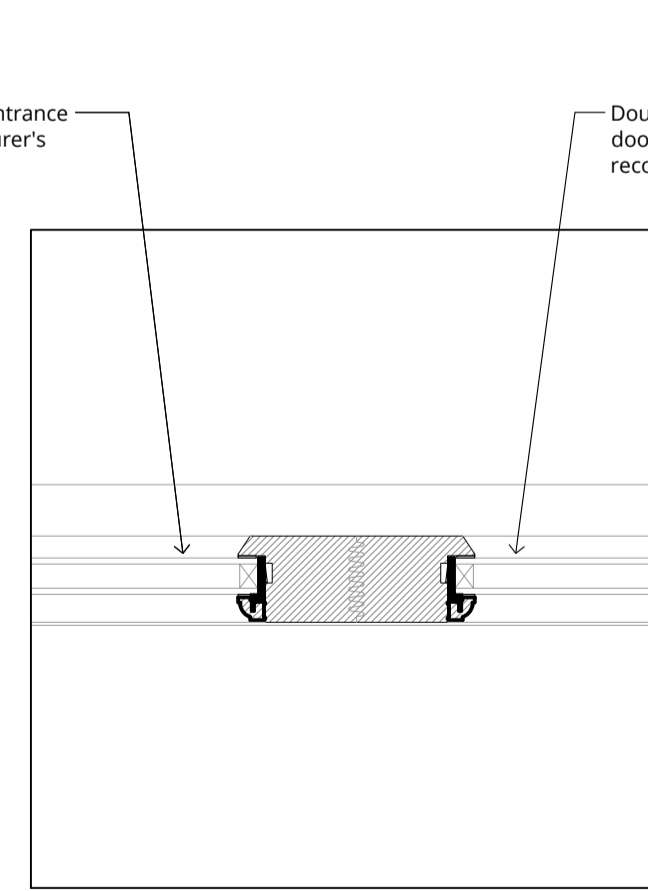
2C Threshold detail
1:5



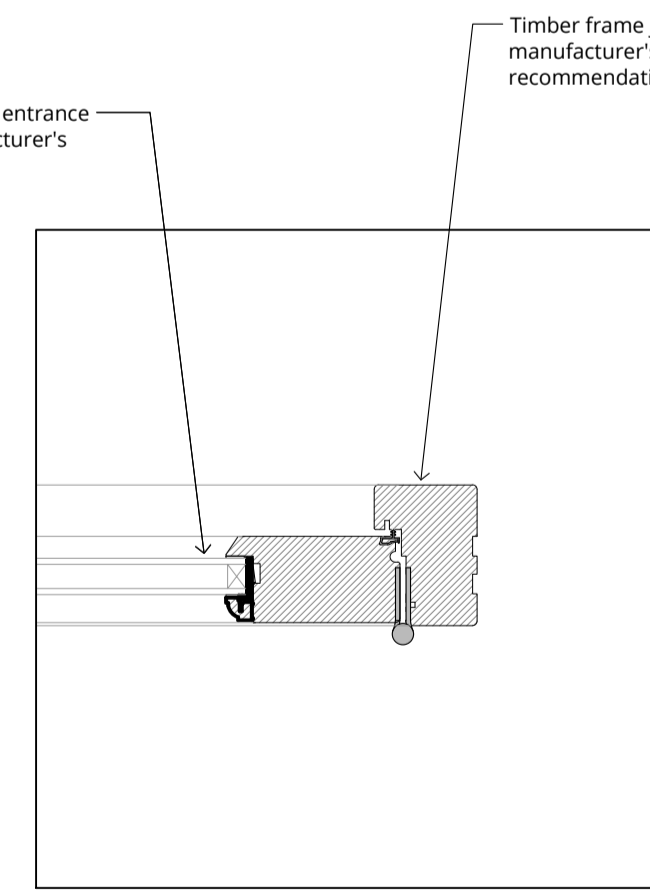
Proposed External doors - Typical details
Scale 1:10



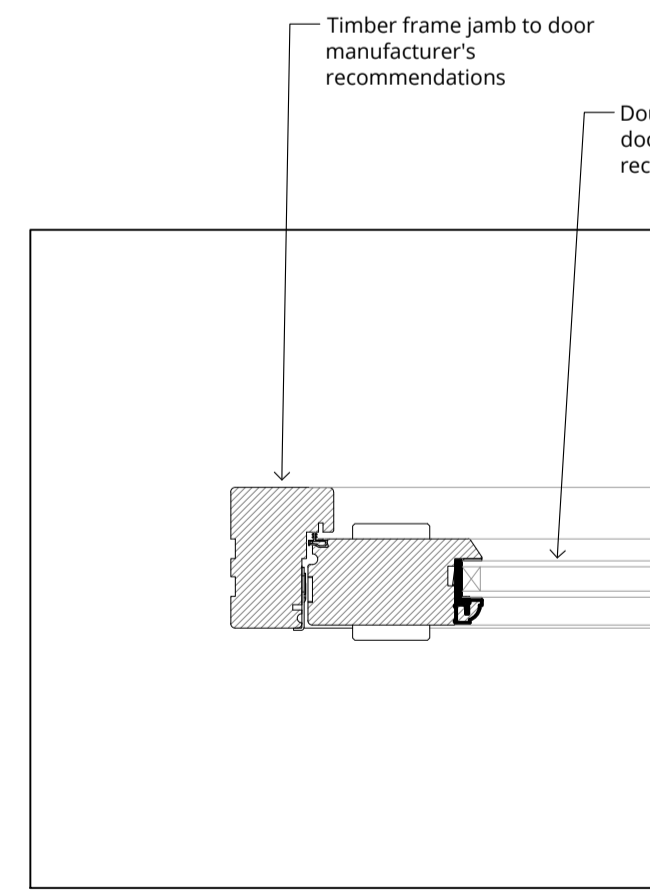
1A Jamb detail
1:5



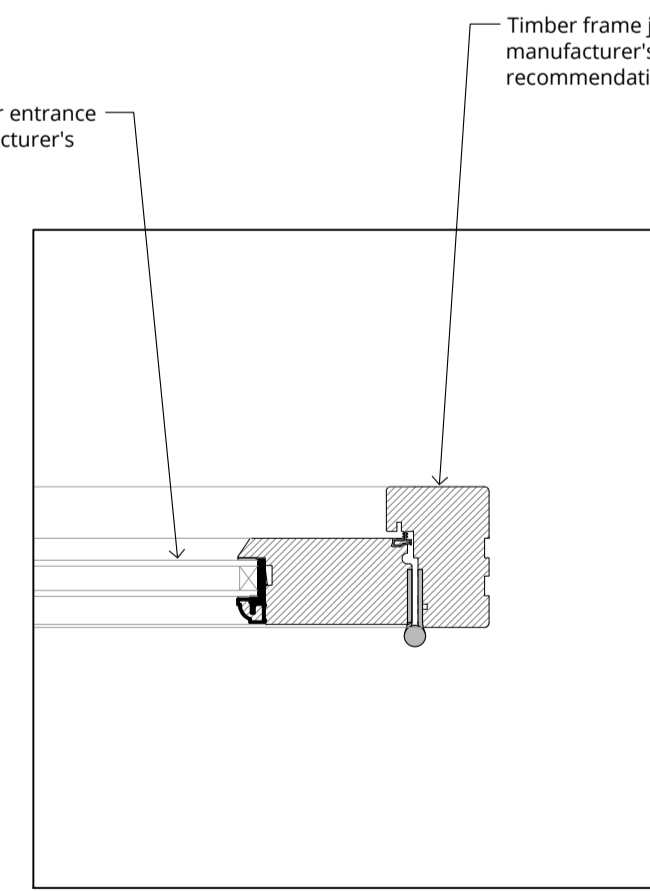
1B Typical detail
1:5



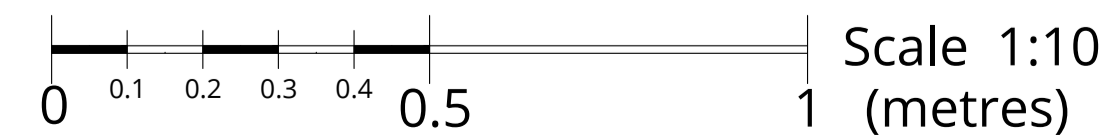
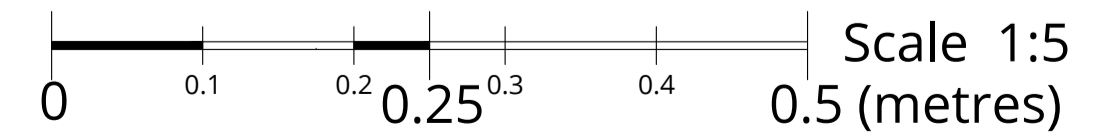
1C Jamb detail
1:5



2A Jamb detail
1:5



2B Jamb detail
1:5



Drawing Status:			
PLANNING			

Rev	Description	Date	By

Barker MAJESTY HOUSE, AVENUE WEST
SKYLINE 120, BRAINTREE
ESSEX, CM77 7AA
T: 01279 647111
W: www.barker-associates.co.uk
E: mail@barker-associates.co.uk

Client: **HARLOW COUNCIL**

Project Title:
**45 SUMNERS FARM CLOSE
HARLOW, ESSEX
CM19 5SL**

Drawing Title:
**PROPOSED EXTERNAL DOORS
DETAILS**

Drawn	Checked	Scale	Date
JM	-	1/20 @ A1	26/06/2023

ARCHITECTURAL

Drawing Number	Status	Revision
P23617-BA-A1-XX-DR-A-6003	S0	P01

Project No: P23-0617