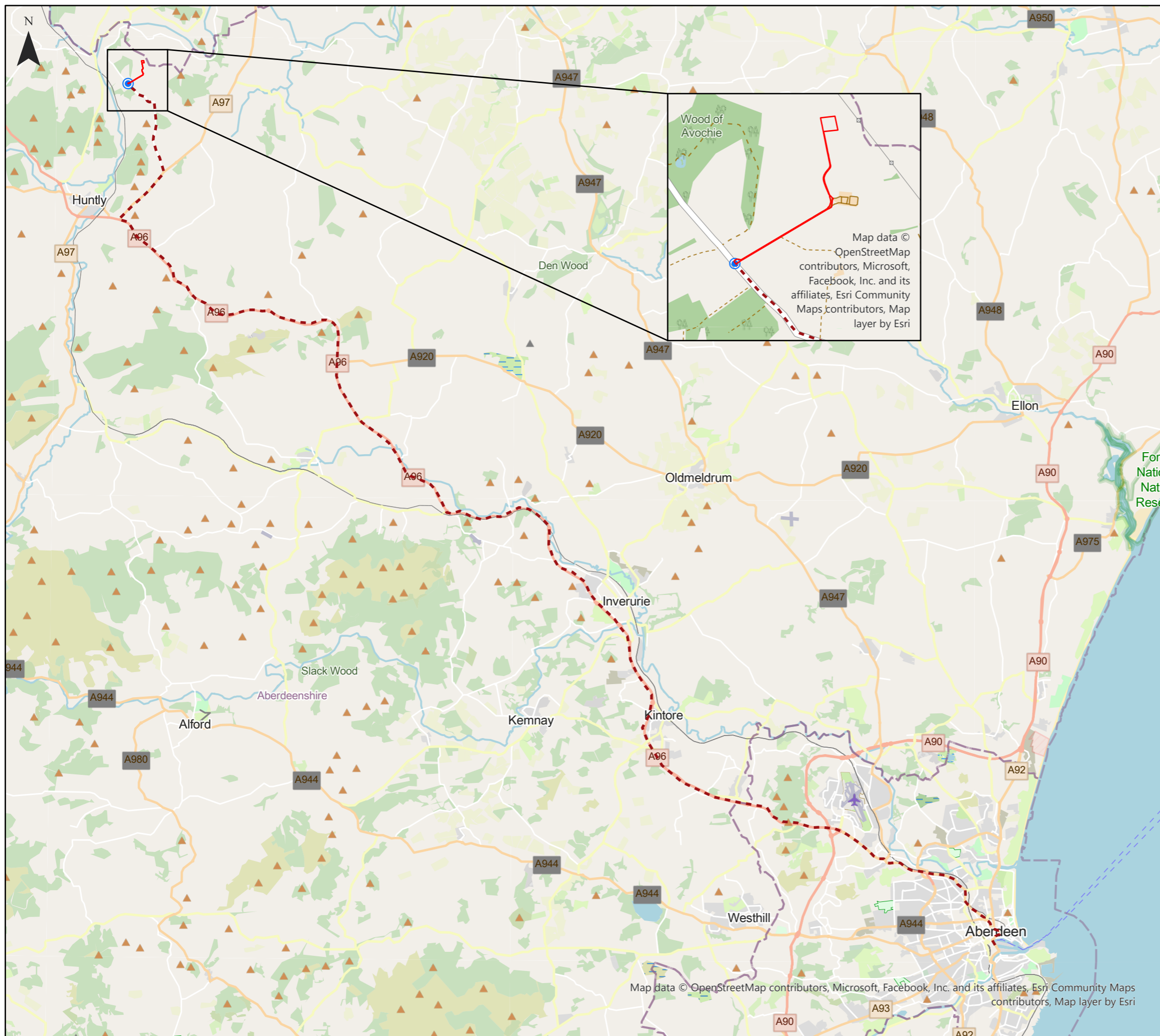


# Rivestone Wind Turbine Proposed Haul Route Figure 5



## Key

- Development Boundary
- Site Access
- Haul Route

Map data ©  
OpenStreetMap  
contributors, Microsoft,  
Facebook, Inc. and its  
affiliates, Esri Community  
Maps contributors, Map  
layer by Esri

Neo Office Address:  
Wright Business Centre, 1 Lonmay Road, Glasgow, G33 4EL



© OpenStreetMap (and)  
contributors, CC-BY-SA



Map data © OpenStreetMap contributors, Microsoft, Facebook, Inc. and its affiliates, Esri Community Maps contributors, Map layer by Esri

Date: 20/09/2023  
Drawn By: Jamie McGhee  
Scale (A3): 1:175,000  
Drawing No: NEO01309/0011/A

