

**Appendix 13 – Landscape Proposals plan (BLA095-01 revision C)**



**TREE PLANTING**

Code	Species	Form	Girth cm	Height cm	Root condition	Quantity
AC	Acer campestre	EHS	14-16	425-600	65/85 L	3
AG	Alnus glutinosa	EHS	14-16	425-600	65/85 L	5
PA	Prunus avium	EHS	14-16	425-600	65/85 L	2
QR	Quercus robur	HS	12-14	350-425	45/65 L	3

Trees total: 13

**NATIVE HEDGE TRANSPLANTS @ 5 per linear metre in double staggered row**

Code	Species	Root Condition	Age + Times Transpl	Height cm	Quantity
AC	Acer campestre (20%)	Bagged	1+1	40-60	1204
CA	Corylus avellana (20%)	Bagged	1+1	40-60	1204
CM	Crataegus monogyna (20%)	Bagged	1+1	40-60	1204
CS	Cornus sanguineum (10%)	Bagged	1+1	40-60	602
LV	Ligustrum vulgare (20%)	Bagged	1+1	40-60	1204
VO	Viburnum opulus (10%)	Bagged	1+1	40-60	602

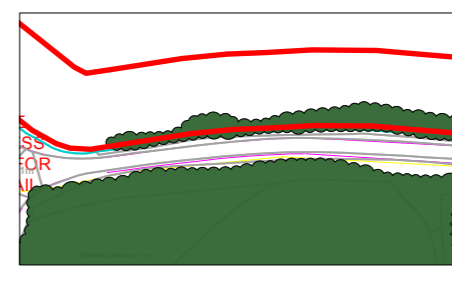
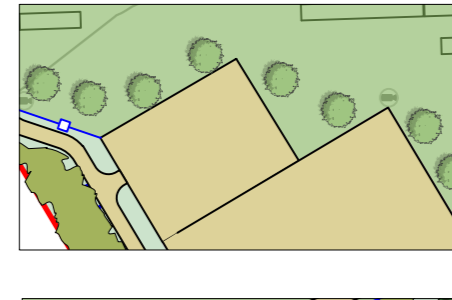




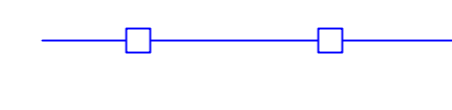





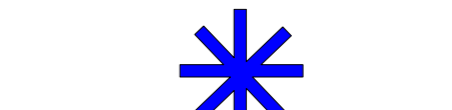
Hedge Transplants total: 6020

**NATIVE STRUCTURE MIX @ 1M CTRS**

Code	Species	Root Condition	Age + Times Transpl	Height cm	Quantity
AC	Acer campestre (10%)	2x	150-175	2x	3019
AG	Alnus glutinosa (10%)	Bagged	2x	150-175	3019
BP	Betula pendula (10%)	Bagged	1+1	100-125	3019
CM	Crataegus monogyna (10%)	Bagged	1+1	40-60	3019
CA	Corylus avellana (10%)	Bagged	1+1	40-60	3019
CS	Cornus sanguineum (10%)	Bagged	1+1	40-60	3019
PS	Prunus spinosa (10%)	Bagged	1+1	40-60	3019
QR	Quercus robur (10%)	Bagged	1u1	100-125	3019
SC	Salix caprea (20%)	Bagged	1+1	40-60	6038

Structure Mix total: 33,209

**KEY**

-  Existing Trees/Vegetation Retained and gapped up where required
-  Proposed Tree Planting
-  Proposed Hedge/Structure Planting
-  Proposed Grassland Mix - EG27 Special Old Fashioned Grazing Mixture (or similar)
-  Proposed Grassland Mix - EM2 Standard General Purpose Meadow Mixture (or similar)
-  Public Right of Way
-  Proposed Security Fencing
-  Proposed Bat Box
-  Proposed Bird Box
-  Proposed Hibernacula
-  Proposed Hedgehog Houses
-  Proposed Insect Hotel
-  Red Line Application Boundary

Revision	Description	Date
-	First issue	1/3/22
A	Second issue	2/3/22
B	Third issue	24/3/22
C	Fourth issue	11/11/22
D	Fifth issue	8/2/23
E	Sixth issue	12/10/23



Project: **Burstead Solar Farm**

Description: **Landscape Proposals**

Status: **For Planning**

Scale: **1:2,000 @A0** Drawn **I** Checked **SW** Date: **12/10/2023**

Job Number: **BLA 095** Drawing Number: **01** Revision: **E**



## **Appendix 14 – Historic Map Extracts**



LEYENDA

Simbolo	Descripción
(Línea gruesa)	Carretera principal
(Línea delgada)	Calle
(Línea con puntos)	Cercado
(Línea con cruces)	Alameda
(Línea con triángulos)	Camino
(Línea con círculos)	Canal
(Línea con cruces)	Alameda
(Línea con triángulos)	Camino
(Línea con círculos)	Canal
(Línea con cruces)	Alameda
(Línea con triángulos)	Camino
(Línea con círculos)	Canal

Mapa del Estado de Sonora, México, en el año 1910. Este mapa muestra la división de las tierras en parcelas y lotes, con sus respectivos dueños y superficies. El mapa fue elaborado por el Ingeniero Agrónomo Don Juan María de los Ríos y el Ingeniero Agrónomo Don Juan María de los Ríos. El mapa muestra la división de las tierras en parcelas y lotes, con sus respectivos dueños y superficies. El mapa fue elaborado por el Ingeniero Agrónomo Don Juan María de los Ríos y el Ingeniero Agrónomo Don Juan María de los Ríos.

Este mapa fue elaborado por el Ingeniero Agrónomo Don Juan María de los Ríos y el Ingeniero Agrónomo Don Juan María de los Ríos. El mapa muestra la división de las tierras en parcelas y lotes, con sus respectivos dueños y superficies. El mapa fue elaborado por el Ingeniero Agrónomo Don Juan María de los Ríos y el Ingeniero Agrónomo Don Juan María de los Ríos.



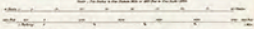
**BURSTEAD**

**LAINHOV**

**EXPLANATION OF SYMBOLS**

Black line	Metalled road	Red line	Metalled road
Grey line	Unmetalled road	Blue line	Water
Green line	Footpath	Black circle	Well
Black square	Building	Black triangle	Windmill
Black rectangle	Enclosure	Black diamond	Boundary
Black circle with dot	Well	Black square with dot	Enclosure
Black triangle with dot	Windmill	Black diamond with dot	Boundary

The scale of this map is 1:50,000. The scale of the aerial photograph is 1:25,000. The scale of the ground is 1:10,000.



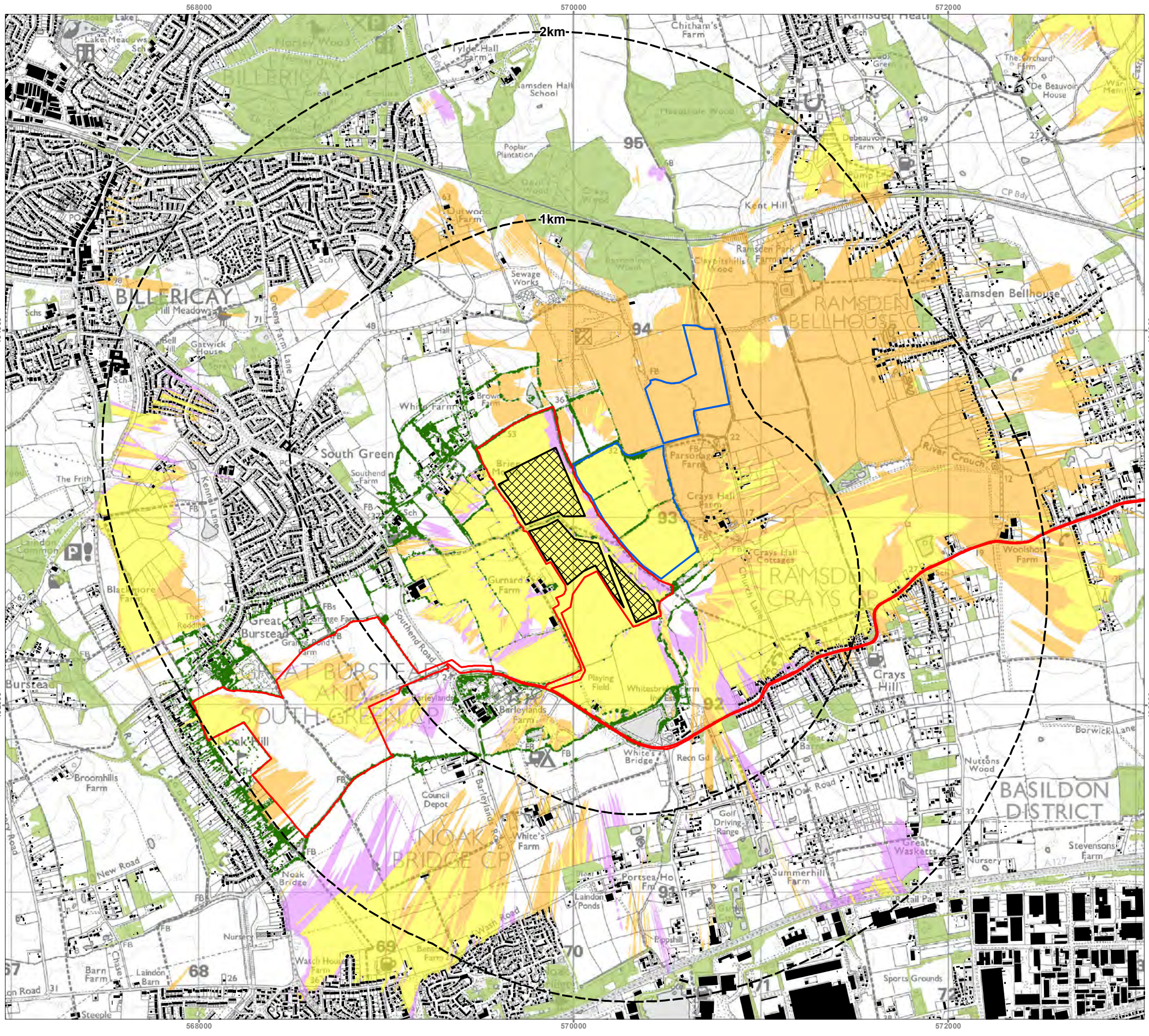
1:50,000  
1:25,000  
1:10,000

**THE NATIONAL GRID**

For the purpose of reference, the National Grid is shown on this map. The grid is based on the Ordnance Survey datum of 1936. The grid is shown in red on this map. The grid is shown in black on the original map.



## **Appendix 15 – Cumulative ZTVs**



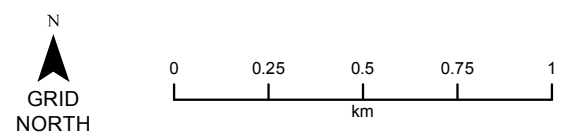
- Key**
- Site Boundary
  - Proposed Development Area
  - Crays Hall Farm (ref: 2/00296/FULL) 2.8m High
  - OS Open Map Local Buildings
  - OS Open Map Local Woodland
  - National Tree Map (NTM) Canopy Data
  - ZTV - Burstead Site Visible (3m High)
  - ZTV - Crays Hall Sites Visible (2.8m High)
  - ZTV - All Sites Visible

Screened ZTV Production Information -  
 The ZTV has been produced using multiple datasets to create a DSM (Digital Surface Model). These have been combined together accurately using ESRI GIS software. The following datasets have been used to create the DSM-

- OS Terrain 5 has been used as the base layer.
- Bluesky's National Tree Map (NTM) This is a detailed dataset covering England and Wales. It provides a comprehensive database of location, height and canopy spread for every single tree 3m and above in height. This is created from stereo aerial photography. Heights used within the model are the MEAN heights supplied with the dataset. This is dated 2021.
- OS Open Map Local data for woodland and buildings to create a Digital Surface Model (DSM) beyond the NTM data.
- Indicative woodland and building heights are modelled at 15m and 8m respectively.
- Viewer height set at 1.7m (in accordance with para 6.11 of GLVIA Third Edition)
- Calculations include earth curvature and light refraction

N.B. This Zone of Theoretical Visibility (ZTV) image illustrates the theoretical extent of where the development may be visible from, assuming 100% atmospheric visibility, and includes the screening effect from vegetation and buildings, based on the assumptions stated above.

The National Tree Map data has been edited on the western boundary of the site and around the existing substation in order to match current on site conditions.



PROJECT TITLE  
**Burstead Solar Farm**

DRAWING TITLE  
**Cumulative Screened Zone of Theoretical Visibility Plan - Crays Hall**

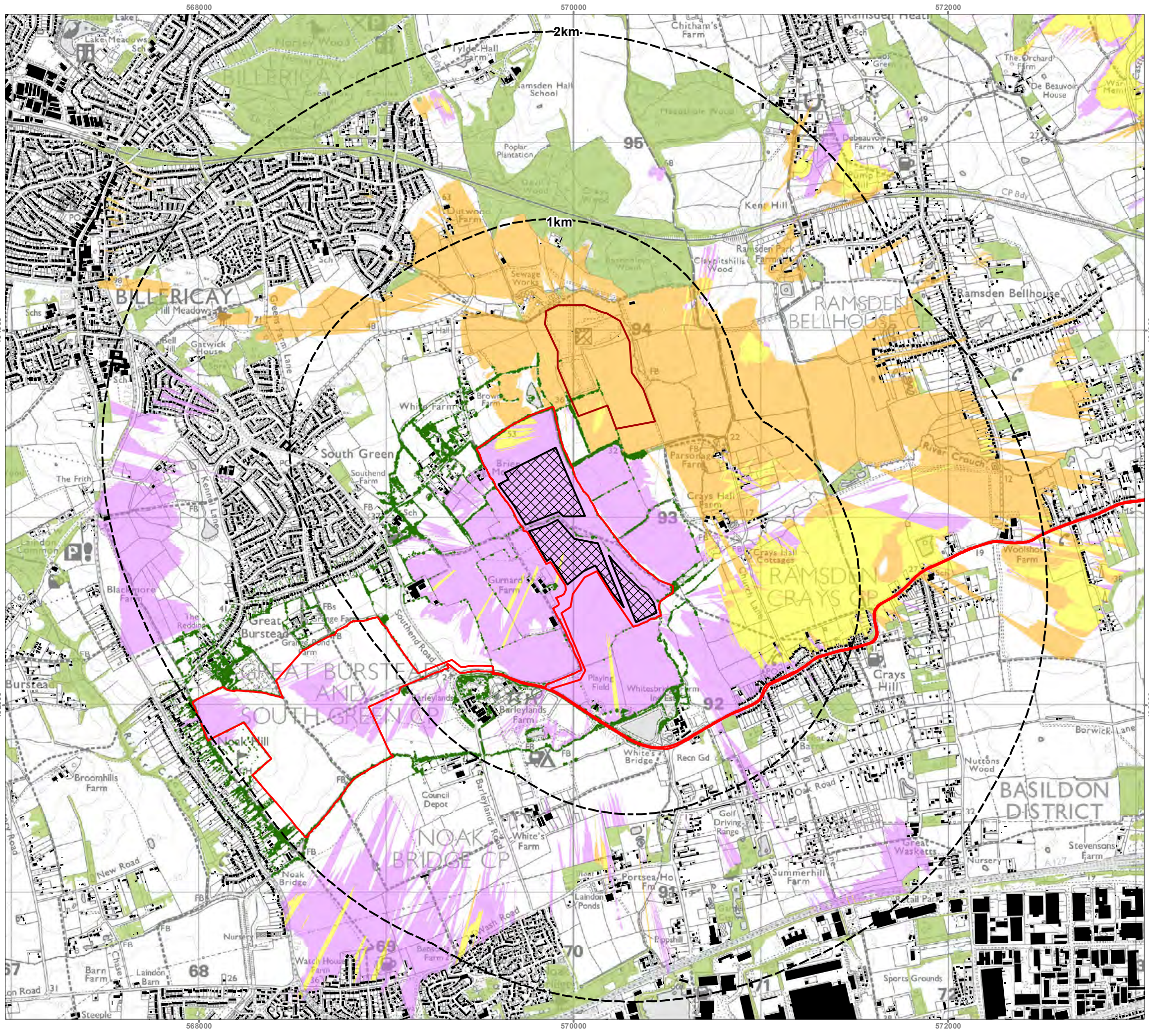
SCALE **1:20,000 @ A3** DRAWING NUMBER **BWL\_011\_03**

DRAWN BY <b>AD</b>	APPROVED BY <b>SW</b>	REVISION <b>A</b>	SHEET <b>-</b>	DATE <b>13/10/2023</b>
-----------------------	--------------------------	----------------------	-------------------	---------------------------

COORDINATE SYSTEM / DATUM  
**British National Grid / Newlyn Datum (AOD)**

2023 Emapsite Licence number 0100061264.  
 Ordnance Survey Copyright Licence number 100054267.





**Key**

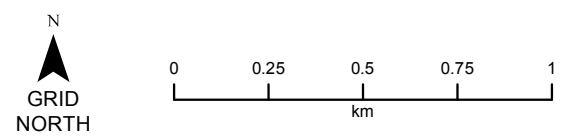
- Site Boundary
- Proposed Development Area
- Outward Farm (ref: 14/00948/FULL) 2.2m High
- OS Open Map Local Buildings
- OS Open Map Local Woodland
- National Tree Map (NTM) Canopy Data
- ZTV - Burstead Site Visible (3m High)
- ZTV - Outward Farm Site Visible (2.2m High)
- ZTV - All Sites Visible

Screened ZTV Production Information -  
 The ZTV has been produced using multiple datasets to create a DSM (Digital Surface Model). These have been combined together accurately using ESRI GIS software. The following datasets have been used to create the DSM-

- OS Terrain 5 has been used as the base layer.
- Bluesky's National Tree Map (NTM) This is a detailed dataset covering England and Wales. It provides a comprehensive database of location, height and canopy spread for every single tree 3m and above in height. This is created from stereo aerial photography. Heights used within the model are the MEAN heights supplied with the dataset. This is dated 2021.
- OS Open Map Local data for woodland and buildings to create a Digital Surface Model (DSM) beyond the NTM data.
- Indicative woodland and building heights are modelled at 15m and 8m respectively.
- Viewer height set at 1.7m (in accordance with para 6.11 of GLVIA Third Edition)
- Calculations include earth curvature and light refraction

N.B. This Zone of Theoretical Visibility (ZTV) image illustrates the theoretical extent of where the development may be visible from, assuming 100% atmospheric visibility, and includes the screening effect from vegetation and buildings, based on the assumptions stated above.

The National Tree Map data has been edited on the western boundary of the site and around the existing substation in order to match current on site conditions.



PROJECT TITLE  
**Burstead Solar Farm**

DRAWING TITLE  
**Cumulative Screened Zone of Theoretical Visibility Plan - Outward Farm**

SCALE **1:20,000 @ A3** DRAWING NUMBER **BWL\_011\_04**

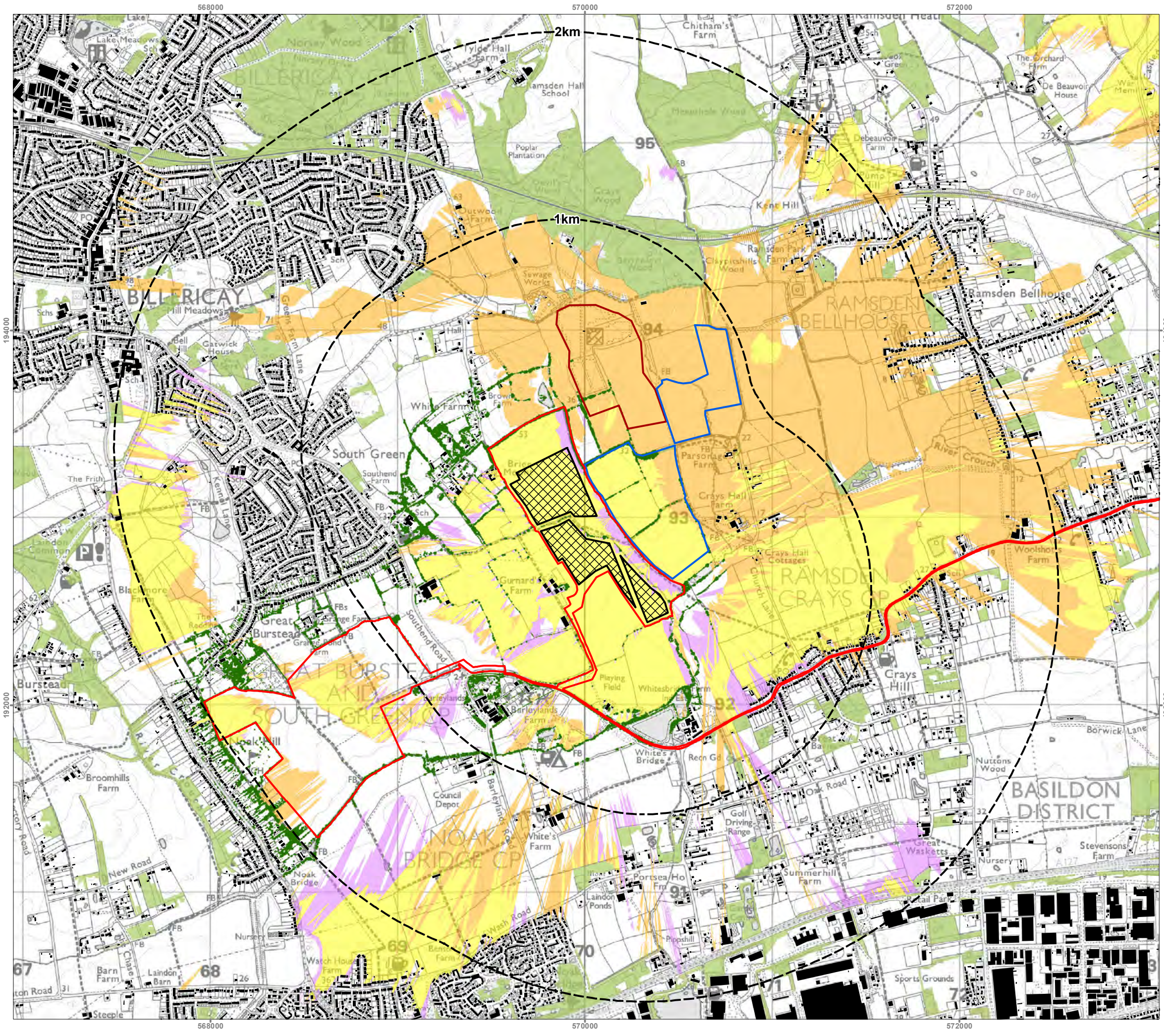
DRAWN BY <b>AD</b>	APPROVED BY <b>SW</b>	REVISION <b>A</b>	SHEET <b>-</b>
			DATE <b>13/10/2023</b>

COORDINATE SYSTEM / DATUM  
**British National Grid / Newlyn Datum (AOD)**

2023 Emapsite Licence number 0100061264.  
 Ordnance Survey Copyright Licence number 100054267.







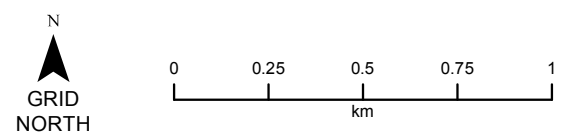
- Key**
- Site Boundary
  - Proposed Development Area
  - Crays Hall Farm (ref: 2/00296/FULL) 2.8m High
  - Outward Farm (ref: 14/00948/FULL) 2.2m High
  - OS Open Map Local Buildings
  - OS Open Map Local Woodland
  - National Tree Map (NTM) Canopy Data
  - ZTV - Burstead Site Visible (3m High)
  - ZTV - Cumulative Sites Visible
  - ZTV - All Sites Visible

Screened ZTV Production Information -  
 The ZTV has been produced using multiple datasets to create a DSM (Digital Surface Model). These have been combined together accurately using ESRI GIS software. The following datasets have been used to create the DSM-

- OS Terrain 5 has been used as the base layer.
- Bluesky's National Tree Map (NTM) This is a detailed dataset covering England and Wales. It provides a comprehensive database of location, height and canopy spread for every single tree 3m and above in height. This is created from stereo aerial photography. Heights used within the model are the MEAN heights supplied with the dataset. This is dated 2021.
- OS Open Map Local data for woodland and buildings to create a Digital Surface Model (DSM) beyond the NTM data.
- Indicative woodland and building heights are modelled at 15m and 8m respectively.
- Viewer height set at 1.7m  
(in accordance with para 6.11 of GLVIA Third Edition)
- Calculations include earth curvature and light refraction

N.B. This Zone of Theoretical Visibility (ZTV) image illustrates the theoretical extent of where the development may be visible from, assuming 100% atmospheric visibility, and includes the screening effect from vegetation and buildings, based on the assumptions stated above.

The National Tree Map data has been edited on the western boundary of the site and around the existing substation in order to match current on site conditions.



PROJECT TITLE  
**Burstead Solar Farm**

DRAWING TITLE  
**Cumulative Screened Zone of Theoretical Visibility Plan - All Sites**

SCALE **1:20,000 @ A3** DRAWING NUMBER **BWL\_011\_05**

DRAWN BY	APPROVED BY	REVISION	SHEET	DATE
AD	SW	A	-	13/10/2023

COORDINATE SYSTEM / DATUM  
**British National Grid / Newlyn Datum (AOD)**

2023 Emapsite Licence number 0100061264.  
 Ordnance Survey Copyright Licence number 100054267.



**Appendix 16 – Revised Layout (drawing BU2. Revision 02A)**



GENERAL NOTES

LEGEND

- PV MODULE
- RED LINE BOUNDARY
- PERIMETER FENCE
- BATTERY STORAGE FENCE
- BATTERY STORAGE CONTAINER
- BATTERY STORAGE INVERTER/TRANSFORMER
- OVERHEAD LINES
- PUBLIC RIGHT OF WAY
- UNDERGROUND SERVICES
- INVERTER STATION
- INTERNAL ROAD
- CCTV CAMERA
- WEATHER STATION

REFERENCE DRAWINGS

No.	DRAWING TITLE	DRAWING No.

No.	DATE	DESCRIPTION OF REVISION	REMARKS

PROJECT NAME: **BURSTEAD SOLAR PV AND BATTERY**

OWNER'S ENGINEER:

GENERAL CONTRACTOR:

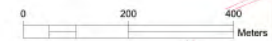


1:500 (GENERAL) & 1:200 (DETAILS) (FOR ALL DRAWINGS) OR AS NOTED OR AS SHOWN ON THE DRAWING OR AS NOTED OR AS SHOWN ON THE DRAWING OR AS NOTED OR AS SHOWN ON THE DRAWING

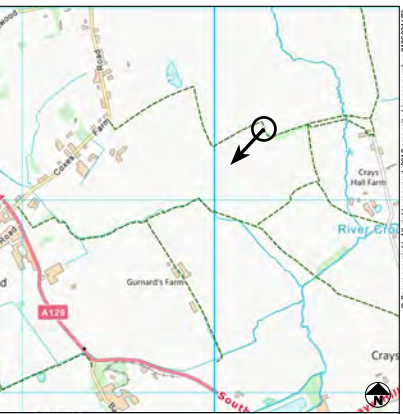
REVISION NO.	DATE	DESCRIPTION	DRAWN	CHECKED	DATE	TITLE

PROPOSED SITE PLAN

SHEET NO.	NO.	DATE	SCALE	BY	CHK.
01	01	01/2024	1:2000	BUZZ	SEA



## Appendix 17 - Photomontage



**VIEWPOINT 02 - EXISTING**  
**BRIDLEWAY EX|306|34**

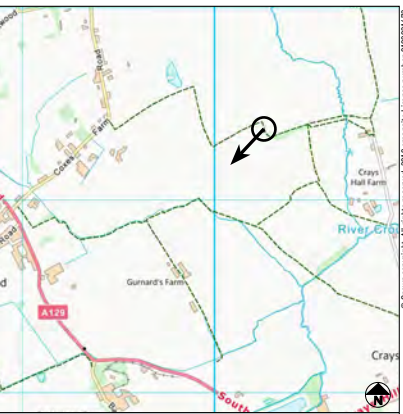
Camera make & model - Nikon D3  
 Lens make & focal length - Nikon 50mm, f/1.8 USM  
 Date & time of photograph - 12/04/2021 @ 08:55  
 OS grid reference - 570254, 193361

Viewpoint height (AOD) - 32.5m  
 Distance from site - 305m  
 Projection - Cylindrical  
 Sheet Size - A1

Visualisation Type - LI TGN 06/19 Type 3  
 Horizontal Field of View - 75°  
 Height of camera AGL - 1.5m  
 Page size / Image size (mm) - 841 x 297 / 820 x 250

**BURNSTEAD SOLAR FARM**





**VIEWPOINT 02 - PHOTOMONTAGE YEAR 1**  
**BRIDLEWAY EX|306|34**

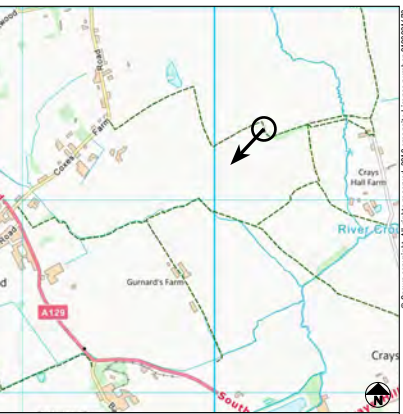
Camera make & model - Nikon D3  
 Lens make & focal length - Nikon 50mm, f/1.8 USM  
 Date & time of photograph - 12/04/2021 @ 08:55  
 OS grid reference - 570254, 193361

Viewpoint height (AOD) - 32.5m  
 Distance from site - 305m  
 Projection - Cylindrical  
 Sheet Size - A1

Visualisation Type - LI TGN 06/19 Type 3  
 Horizontal Field of View - 75°  
 Height of camera AGL - 1.5m  
 Page size / Image size (mm) - 841 x 297 / 820 x 250

**BURNSTEAD SOLAR FARM**





**VIEWPOINT 02 - PHOTOMONTAGE YEAR 10**  
**BRIDLEWAY EX|306|34**

Camera make & model - Nikon D3  
 Lens make & focal length - Nikon 50mm, f/1.8 USM  
 Date & time of photograph - 12/04/2021 @ 08:55  
 OS grid reference - 570254, 193361

Viewpoint height (AOD) - 32.5m  
 Distance from site - 305m  
 Projection - Cylindrical  
 Sheet Size - A1

Visualisation Type - LI TGN 06/19 Type 3  
 Horizontal Field of View - 75°  
 Height of camera AGL - 1.5m  
 Page size / Image size (mm) - 841 x 297 / 820 x 250

**BURNSTEAD SOLAR FARM**

