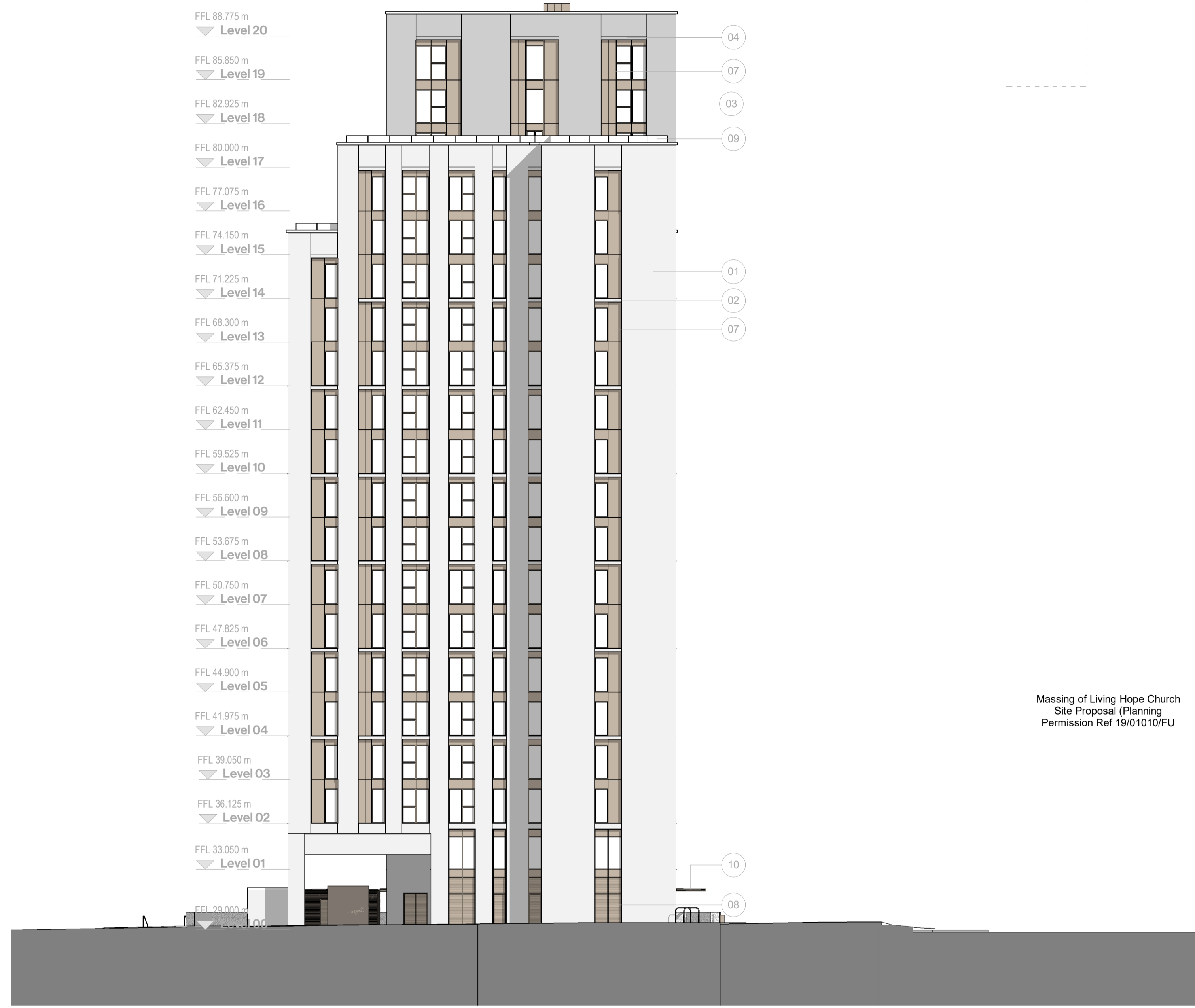


Massing of Living Hope Church
Site Proposal (Planning
Permission Ref 19/01010/FU)

1 Elevation - West
1 : 200



Massing of Living Hope Church
Site Proposal (Planning
Permission Ref 19/01010/FU)

2 Elevation - East
1 : 200

- KEY
1. Fairfaced brick - light red multi - stretcher
 2. Fairfaced brick - light red multi - soldier
 3. Fairfaced brick - dark red multi - stretcher
 4. Fairfaced brick - dark red multi - soldier
 5. Curtain walling - bronze colour
 6. Glazing frame - bronze colour
 7. Metal panel finish - bronze colour
 8. Louvre panel - colour colour
 9. Glass screen to parapet edge
 10. Wind mitigation canopy - metal grill

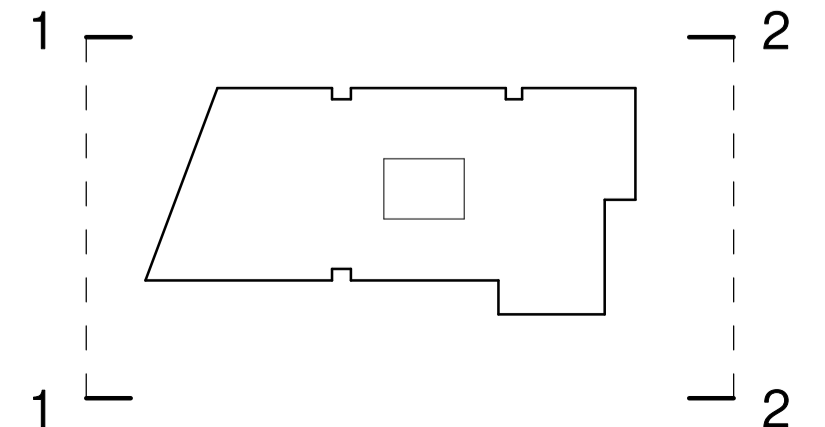
Notes
Unless indicated, this drawing is for information only and should not be used for construction. Do not scale, use figured dimensions only. All dimensions to be checked on site. This drawing should be printed and read at the original size, as stated above. Cartwright Pickard Architects accepts no responsibility for errors that occur as a result of reviewing this drawing at any other size.
Cartwright Pickard Architects prepared this drawing using Revit 2019.2 and does not accept liability for any loss or degradation of that information held in the drawing resulting from the translation from the original file format to any other file format or from the recipient's reading of it in any other programme or an earlier version of the programme referred to above. Cartwright Pickard Architects accepts no liability for use of this drawing by parties other than the party for whom it was prepared or for purposes other than those for which it was prepared.

DWG Issues
When this drawing is issued in DWG format it is an uncontrolled version and is provided to enable the recipient to prepare its own documents/drawings for which it is solely responsible. It is based on background information current at the time of issue. Cartwright Pickard Architects accepts no liability for any alterations to, additions to or discrepancies arising out of changes to such background information which occur after it has been issued by Cartwright Pickard Architects.

Drawing Revisions

Date:	Rev:	Note:
29.06.20	P -	For Planning
23.11.20	P 1	Highways comments integrated

Check:
LP
LP



CARTWRIGHT
PICKARD

London Office
1 Canal Side Studios
6-14 St Pancras Way
London NW1 0CG
Tel: 020 7594 3830

cartwrightpickard.com
© Cartwright Pickard Architects Ltd

Client
Modernistiq Ventures Ltd

Project
845 Saxton Lane

Building Name
Foundry Street / Saxton Lane

Drawing Original Size
A1

Drawing Title
Elevations - East and West

Scale
1:200 @ A1

Drawing Status
For Planning

Drawing No.
845-CPA-ZZ-ZZ-DR-A-0231

Drawing Created
Jun 2020

Revision
P1