

FFL 88.775 m
▼ Level 20
FFL 85.850 m
▼ Level 19
FFL 82.925 m
▼ Level 18
FFL 80.000 m
▼ Level 17
FFL 77.075 m
▼ Level 16
FFL 74.150 m
▼ Level 15
FFL 71.225 m
▼ Level 14
FFL 68.300 m
▼ Level 13
FFL 65.375 m
▼ Level 12
FFL 62.450 m
▼ Level 11
FFL 59.525 m
▼ Level 10
FFL 56.600 m
▼ Level 09
FFL 53.675 m
▼ Level 08
FFL 50.750 m
▼ Level 07
FFL 47.825 m
▼ Level 06
FFL 44.900 m
▼ Level 05
FFL 41.975 m
▼ Level 04
FFL 39.050 m
▼ Level 03
FFL 36.125 m
▼ Level 02
FFL 33.050 m
▼ Level 01
FFL 29.000 m
▼ Level 00



1 Elevation - North
1 : 200

FFL 88.775 m
▼ Level 20
FFL 85.850 m
▼ Level 19
FFL 82.925 m
▼ Level 18
FFL 80.000 m
▼ Level 17
FFL 77.075 m
▼ Level 16
FFL 74.150 m
▼ Level 15
FFL 71.225 m
▼ Level 14
FFL 68.300 m
▼ Level 13
FFL 65.375 m
▼ Level 12
FFL 62.450 m
▼ Level 11
FFL 59.525 m
▼ Level 10
FFL 56.600 m
▼ Level 09
FFL 53.675 m
▼ Level 08
FFL 50.750 m
▼ Level 07
FFL 47.825 m
▼ Level 06
FFL 44.900 m
▼ Level 05
FFL 41.975 m
▼ Level 04
FFL 39.050 m
▼ Level 03
FFL 36.125 m
▼ Level 02
FFL 33.050 m
▼ Level 01
FFL 29.000 m
▼ Level 00



2 Elevation - South
1 : 200

Massing of Living Hope Church Site Proposal
(Planning Permission Ref 19/01010/FU)

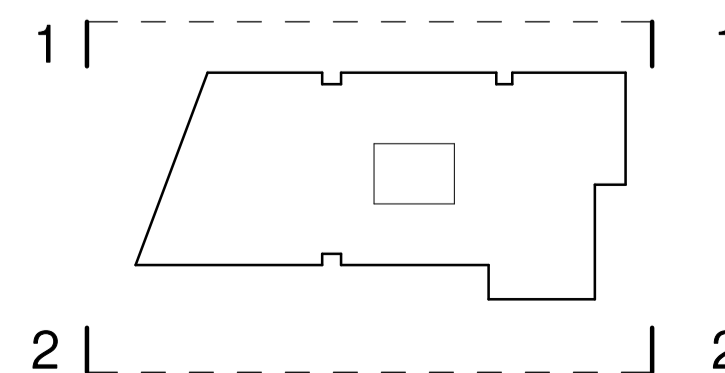
- KEY
1. Fairfaced brick - light red multi - stretcher
 2. Fairfaced brick - light red multi - soldier
 3. Fairfaced brick - dark red multi - stretcher
 4. Fairfaced brick - dark red multi - soldier
 5. Curtain walling - bronze colour
 6. Glazing frame - bronze colour
 7. Metal panel finish - bronze colour
 8. Louvre panel - colour colour
 9. Glass screen to parapet edge
 10. Wind mitigation canopy - metal grill

Notes
Unless indicated, this drawing is for information only and should not be used for construction. Do not scale, use figured dimensions only. All dimensions to be checked on site. This drawing should be printed and read at the original size, as stated above. Cartwright Pickard Architects accepts no responsibility for errors that occur as a result of reviewing this drawing at any other size.
Cartwright Pickard Architects prepared this drawing using Revit 2019.2 and does not accept liability for any loss or degradation of that information held in the drawing resulting from the translation from the original file format to any other file format or from the recipient's reading of it in any other programme or an earlier version of the programme referred to above. Cartwright Pickard Architects accepts no liability for use of this drawing by parties other than the party for whom it was prepared or for purposes other than those for which it was prepared.

Drawing Revisions

Date:	Rev:	Note:
29.06.20	P -	For Planning
23.11.20	P 1	Highways comments integrated

Check:
LP
LP



CARTWRIGHT
PICKARD

London Office
1 Canal Side Studios
6-14 St Pancras Way
London NW1 0CG
Tel: 020 7594 3830

cartwrightpickard.com
© Cartwright Pickard Architects Ltd

Client
Modernistiq Ventures Ltd

Project
845 Saxton Lane

Building Name
Foundry Street / Saxton Lane

Drawing Original Size
A1

Drawing Title
Elevations - North and South

Scale
1:200 @ A1

Drawing Status
For Planning

Drawing No.
845-CPA-ZZ-ZZ-DR-A-0230

Drawing Created
Jun 2020

Revision
P1