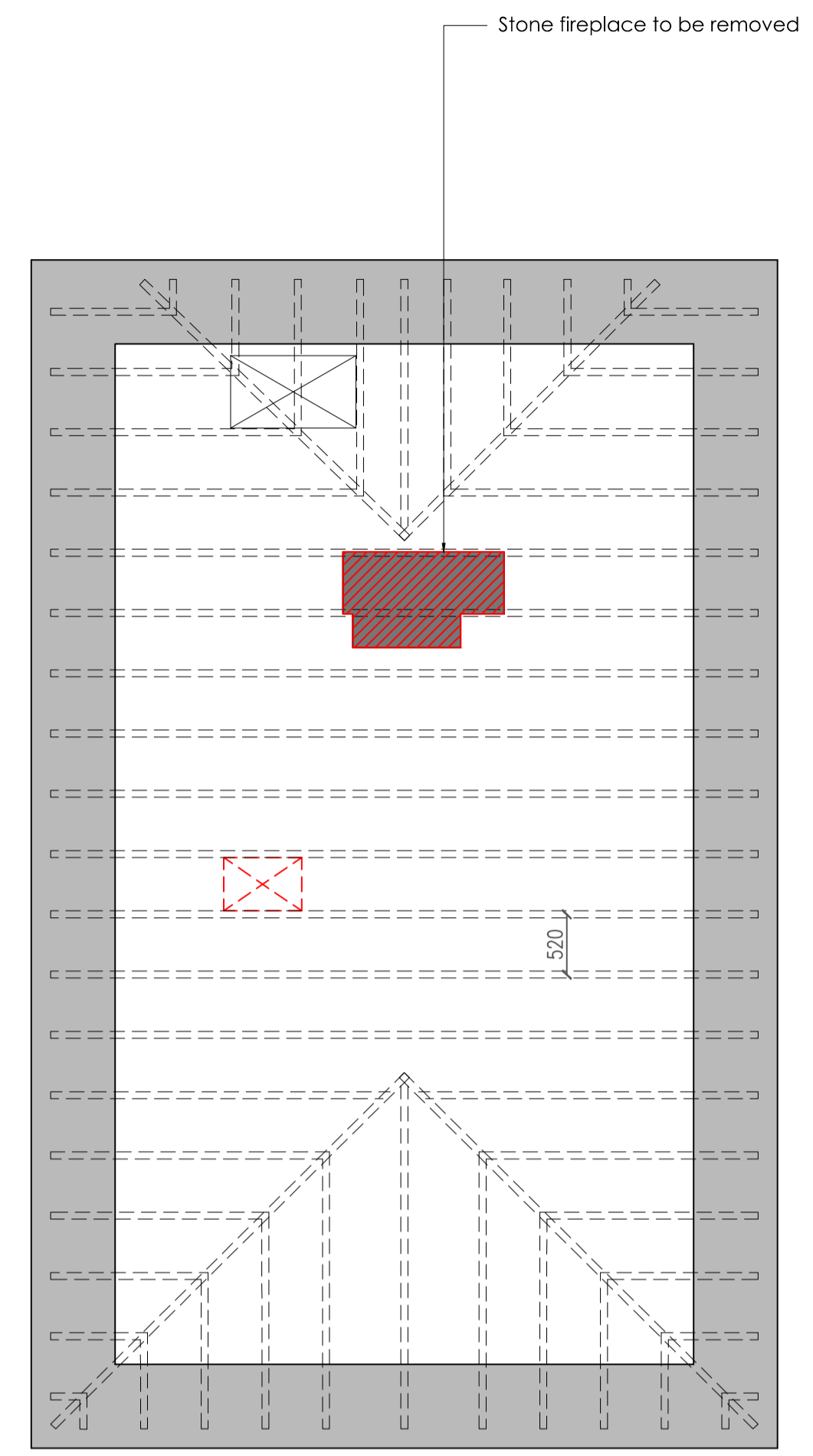
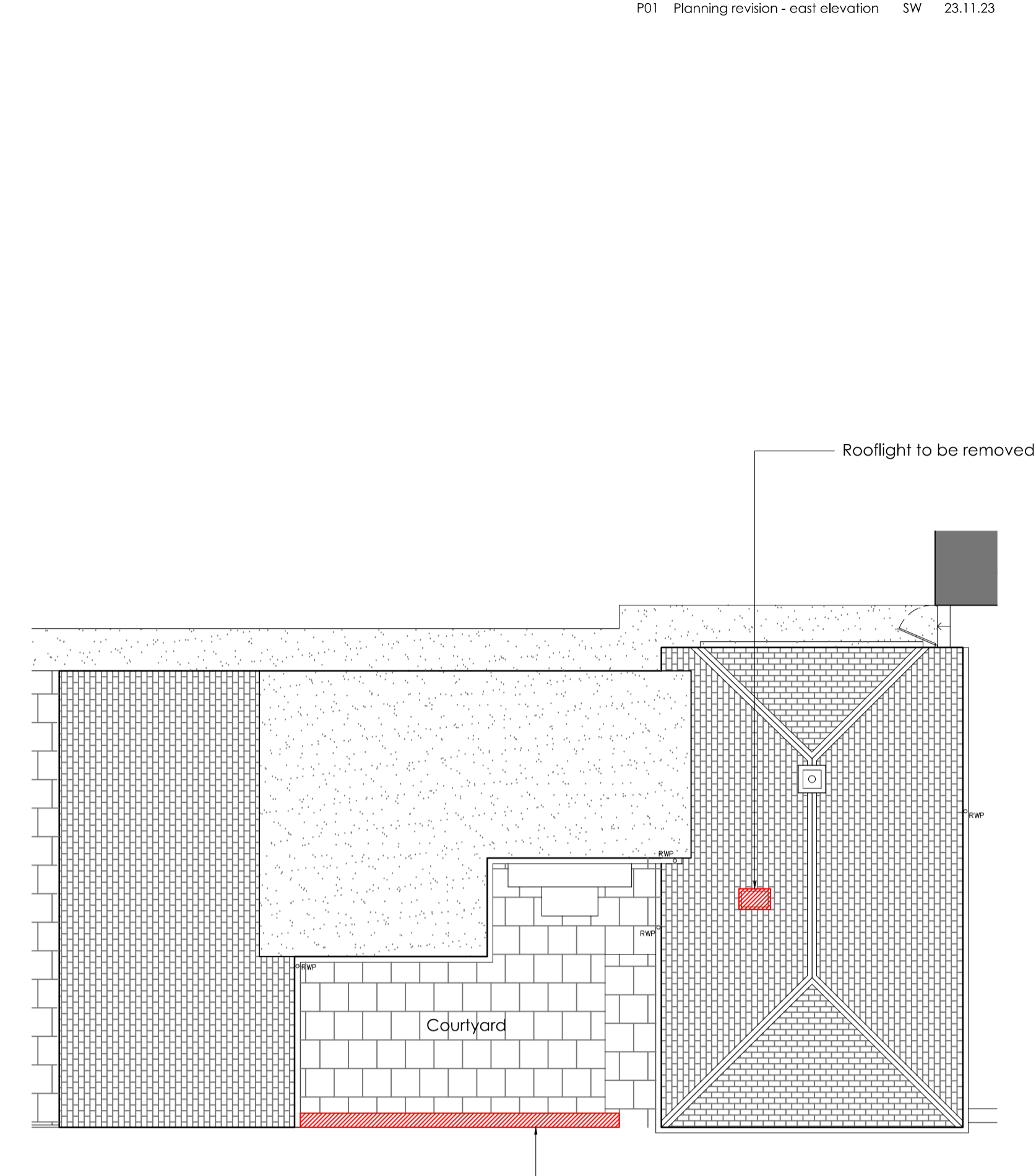


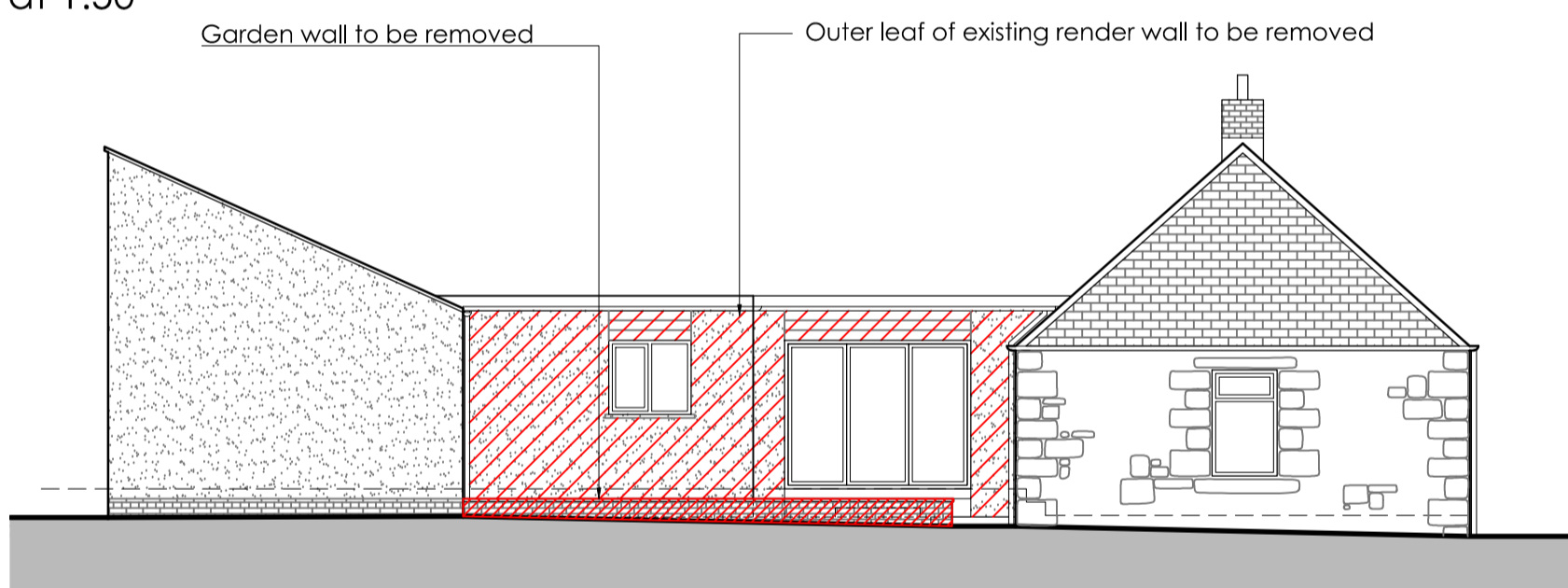
Demolition Partial Ground Floor Plan at 1:50



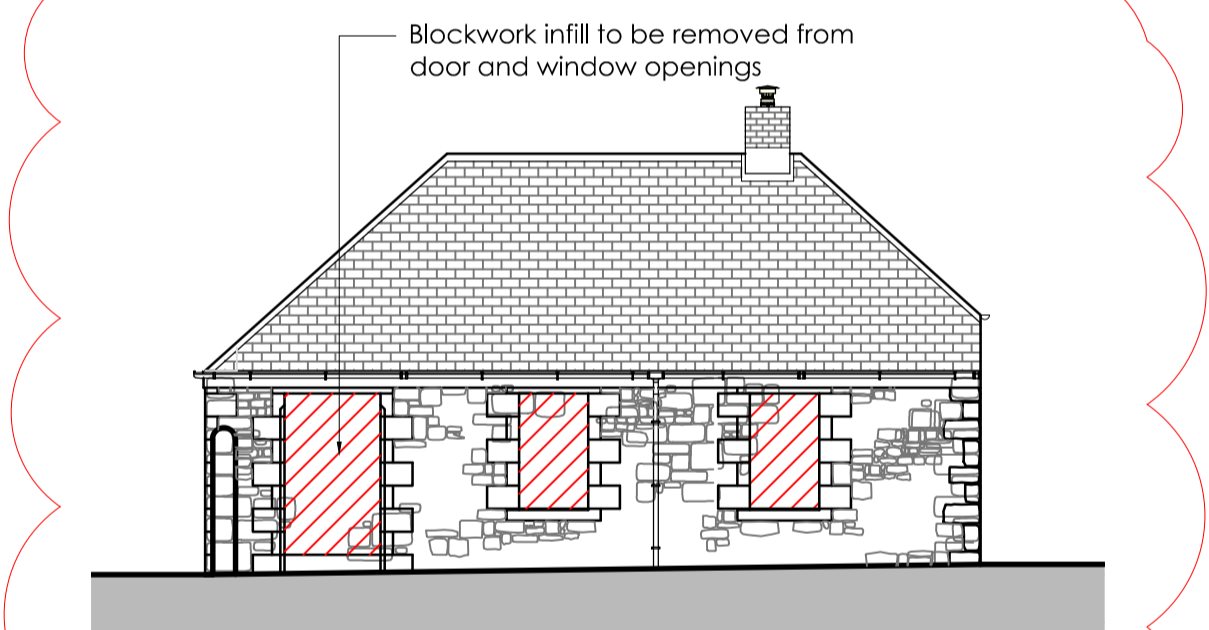
Demolition First Floor Plan at 1:50



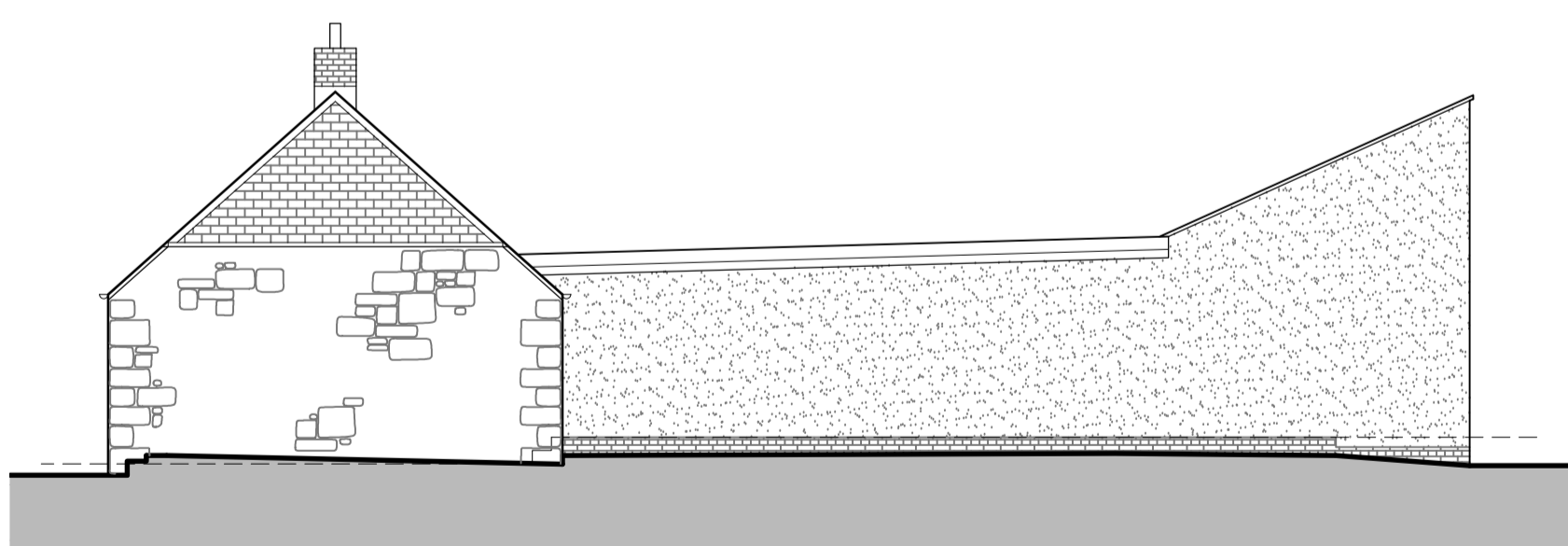
Demolition Roof Plan at 1:100



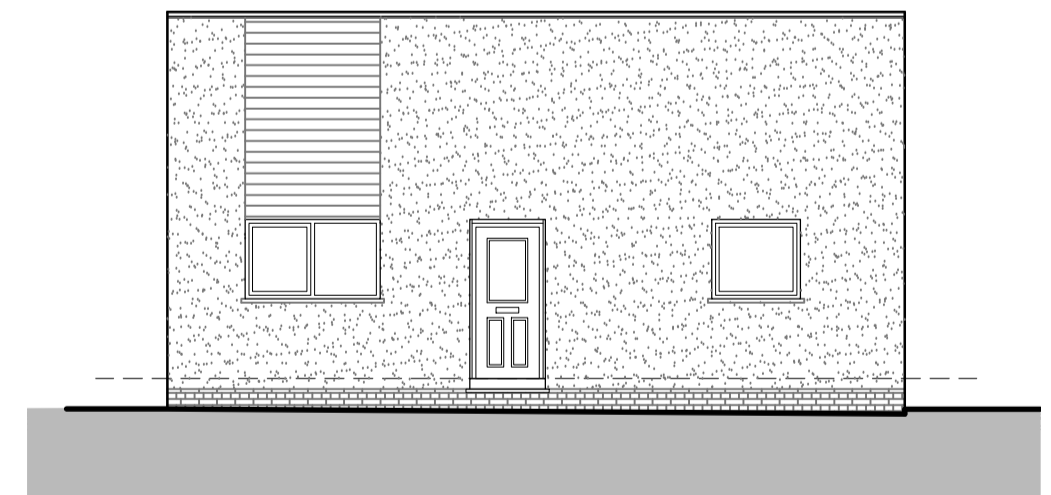
Demolition South Elevation at 1:100



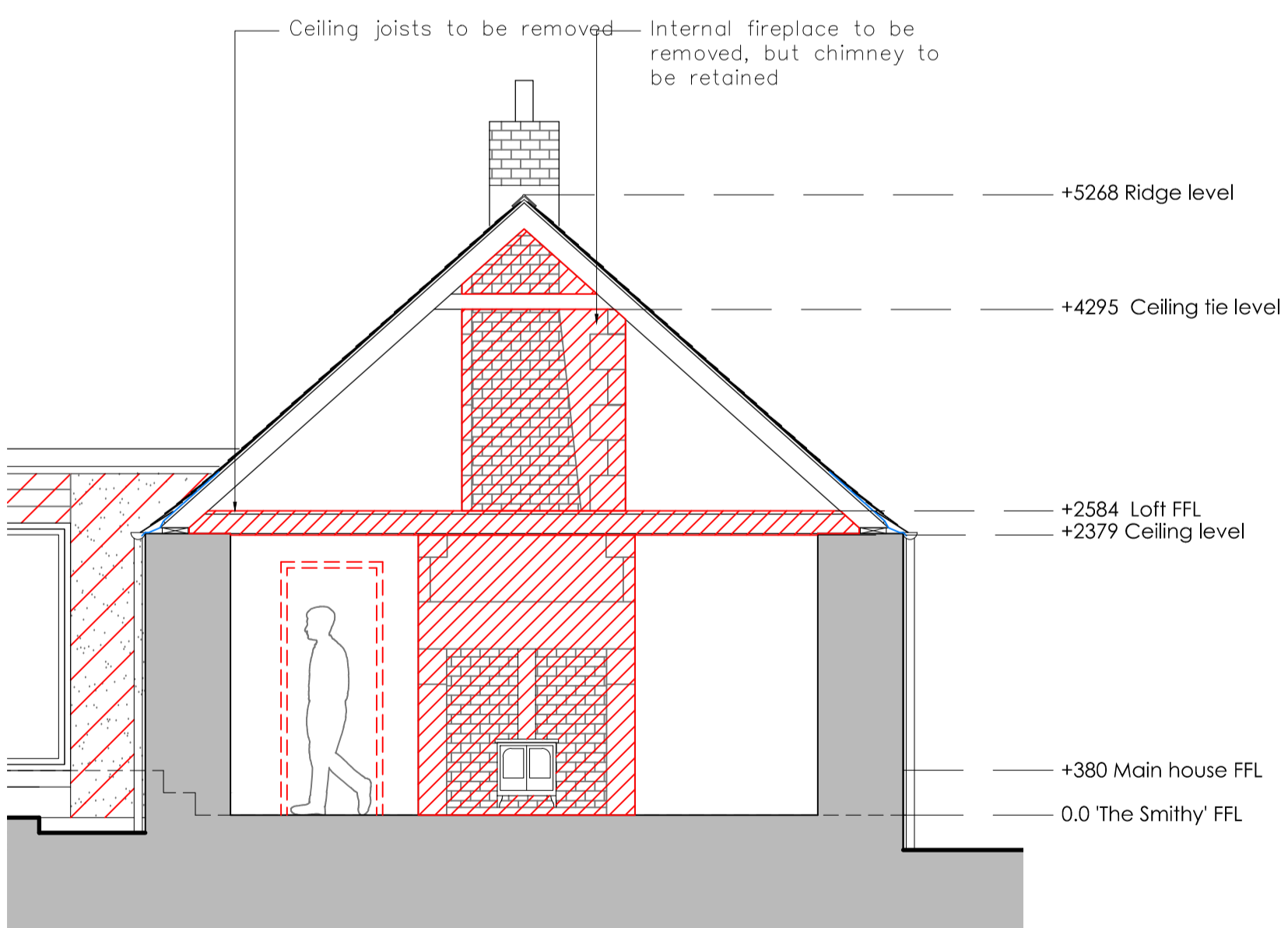
Demolition East Elevation at 1:100



Demolition North Elevation at 1:100



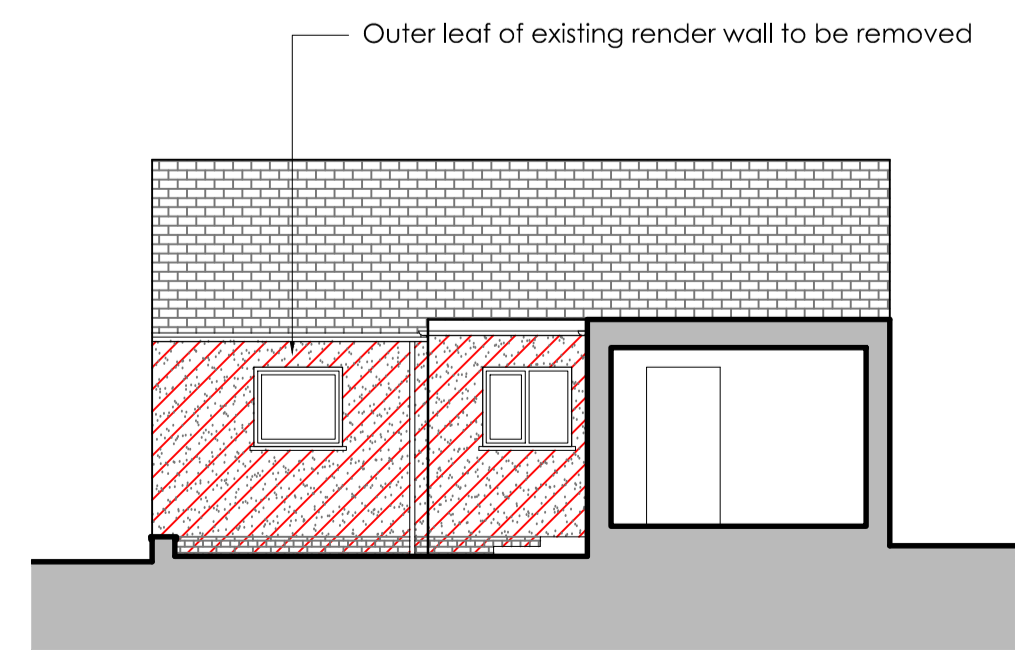
Demolition West Elevation at 1:100



Demolition Section AA at 1:50



Demolition West Elevation from Courtyard at 1:100



Demolition East Elevation from Courtyard at 1:100

