



Salvation Army Ayr Stone Report



Located 59 John Street, Ayr
KA8 0BS

Category B listed building
Recommended stone type - Peak Moor



Salvation Army Ayr Stone Report



1. Bosh/failed repairs to cills required old repairs to be removed and re done using MM Repair.



2. Bosh/failed repairs to plinth course require old repairs to be removed and re done using MM Repair.



3. Bosh/failed repairs to Dressed ashlar require old repairs to be removed and re done using MM Repair.



4. Base of Mullion has weathered and requires part repair using MM Repair.



5. Bosh repairs have failed around window rybat, stone requires a redress and partial repair.



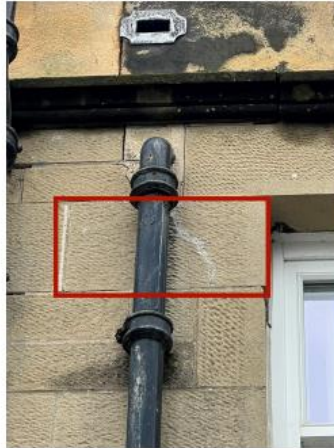
6. Cementitious old repairs to be removal and re done using MM Repair followed by isolated lime pointing to open areas.



Salvation Army Ayr Stone Report



7. Bosh/failed repairs to lintels require old repairs to be removed and re done using MM Repair to 4 areas market in Section G.



8. Resin anchor stitch repair required to window rybat.



9. Bosh/failed repairs to cills require old repairs to be removed and re done using MM Repair.



10. Bosh/failed repairs to cills require old repairs to be removed and re done using MM Repair.



11. Bosh/failed repairs to areas around window require old repairs to be removed and re done using MM Repair.



12. Bosh/failed repairs to areas around window require old repairs to be removed and re done using MM Repair.



Salvation Army Ayr Stone Report



13. Bosh/failed isolated repairs to areas around base of section F require old repairs to be removed and re done using MM Repair.



14. Stone replacement required to damaged quoin section.



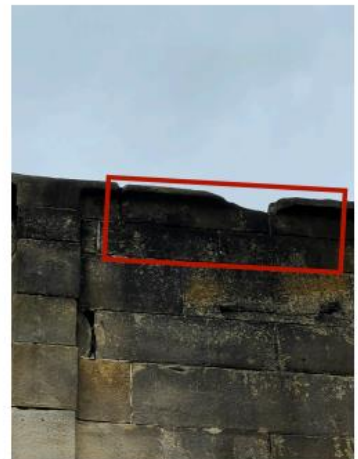
15. Isolated thin bosh repairs require redressed/removed and carborundum rub.



16. Eroded feature stone required replacement & repairs to surrounding stones using MM Repair.



17. Stone replacement required to damaged dressed ashlar section.



18. Stone replacement required to damaged moulded coping section.



Salvation Army Ayr Stone Report



19. Bosh/failed isolated repairs to areas around base of section E require old repairs to be removed and re done using MM Repair & resin anchor stitch repair



20. Eroded feature stone required replacement & repairs to surrounding stones using MM Repair.



21. Cementitious old repairs to be removal and re done using MM Repair.



22. Bosh/failed repairs to Dressed ashlar require old repairs to be removed and re done using MM Repair.



23. Bosh/failed repairs to Dressed buttress require old repairs to be removed and re done using MM Repair.



24. Bosh/failed repairs to Dressed ashlar require old repairs to be removed and re done using MM Repair.



Salvation Army Ayr Stone Report



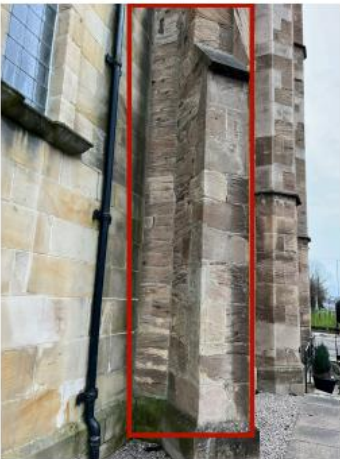
25. Isolated part repair required to window rybat to avoid water build up.



26. Bosh/failed repairs to Dressed buttress require old repairs to be removed and re done using MM Repair.



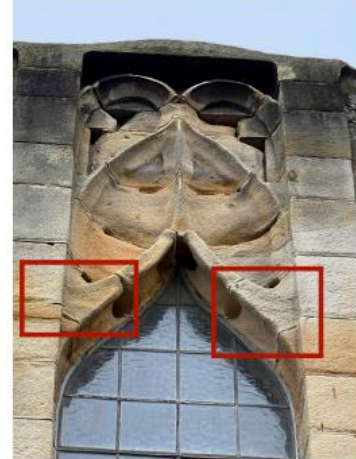
27. Damaged/cracked lintel requires resin anchor stitch repair & full lintel repair.



28. Bosh/failed repairs to Dressed buttress and internal wall require old repairs to be removed and re done using MM Repair.



29. Bosh/failed isolated repairs to areas require old repairs to be removed and re done using MM Repair.



30. Eroded feature stones required replacements & repairs to surrounding stones using MM Repair.



Salvation Army Ayr Stone Report



31. Bosh/failed isolated repairs to areas require old repairs to be removed and re done using MM Repair.



32. Eroded feature stones required replacements & repairs to surrounding stones using MM Repair.



33. Top corner requires 3 courses to be striped following movement and rebuild using sufficient ties.



34. Bosh/failed repairs to Dressed buttress require old repairs to be removed and re done using MM Repair.



35. Bosh/failed repairs to areas around window require old repairs to be removed and re done using MM Repair.



36. Bosh/failed repairs to areas around window require old repairs to be removed and re done using MM Repair.



Salvation Army Ayr Stone Report



37. South Elevation Pillar has eroded through time. High level part indent should be replaced with full width part indent which will strengthen the gate.



38. South Elevation cement rendered wall has become bosh in most areas, there are no signs of sections becoming loose or falling of but will in time.





Salvation Army Ayr Stone Report



39. Internal arches above 4no windows (2 windows at each stair area) have consistent movement cracks on each arch areas. Possibly caused by movement to external corners. Investigation work will have to be carried out by opening up sections. New stone arches may be required if the internal leaf is stone or change of detail required ie concrete lintel installation on each window making up a new internal leaf.



38. Due to the stone being porous, dampness is caused damage to internal finishings. I recommend areas around each window be opened up and dpc installed between stone and new finishing to avoid dampness travelling through future internal finishing.

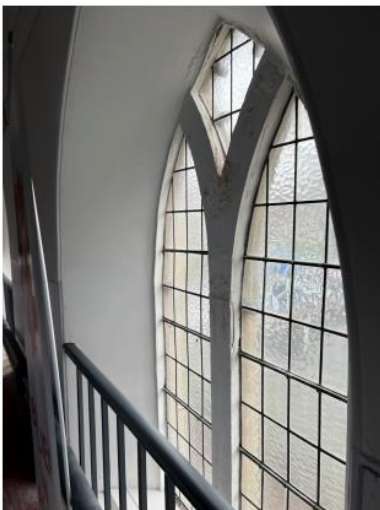




Salvation Army Ayr Stone Report



40. Paint to internal stone has bubbled and damaged the stonework to which it has been applied to. Stone must be allowed to breath or it will suffocate causing damage to the stone which is evident on this building. I recommend all paint be removed from internal stone windows, Kiem breathable paint and then be applied or the stone left without new paint.



41. Internal window stonework has crack running down the inside leaf which will in time get worse. Solution would be to drill resin stainless steel ancors and repair but should the window progress with removing the paint which would be done by hand the section of stone would not withstand hand dressing and will have to be replaced.





Salvation Army Ayr Stone Report

42. Lime pointing areas as per marked drawings

Area A - 60% lime pointing would be required to fill all open and defected mortar joints

Area B - 30% lime pointing would be required to fill all open and defected mortar joints.

Area C - 40% lime pointing would be required to fill all open and defected mortar joints.

Area D - 20% lime pointing would be required to fill all open and defected mortar joints.

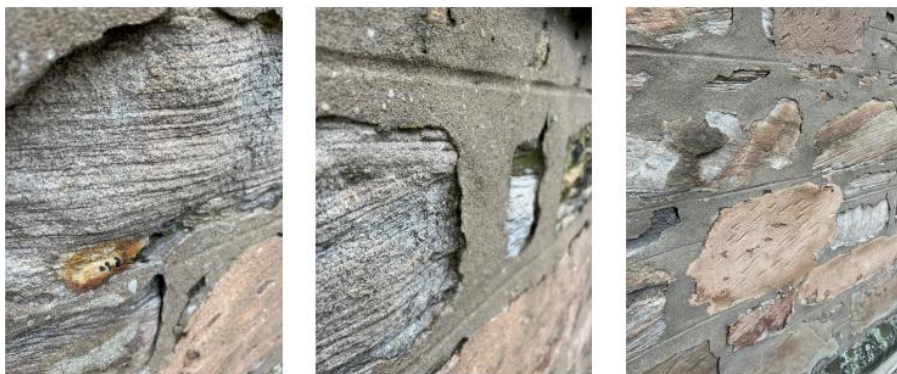
Area E - 100% lime pointing would be required to fill all open and defected mortar joints.

Area F - 100% lime pointing would be required to fill all open and defected mortar joints.

Area G - 30% lime pointing would be required to fill all open and defected mortar joints.

Area H - 20% lime pointing would be required to fill all open and defected mortar joints.

Area I - 30% lime pointing would be required to fill all open and defected mortar joints.



Defective failed cement pointing



Salvation Army Ayr Stone Report

Defective/Bosh repairs



Should you require any further information regarding this survey, please do not hesitate to contact the writer or our office.

Jack Lawson
Managing Director
JL Conservation Surveyors Ltd

Mob: [07365815047](tel:07365815047) | Office: [01413750461](tel:01413750461)
Email: info@jlconservationsurveyors.co.uk
Web: www.jlconservationsurveyors.co.uk
Head Office: Red Tree Business Suites | Suite 1.11 | [33 Dalmarnock Rd | Glasgow | G40 4LA](https://www.google.com/maps/place/33+Dalmarnock+Rd,+Glasgow,+Scotland/G40+4LA)