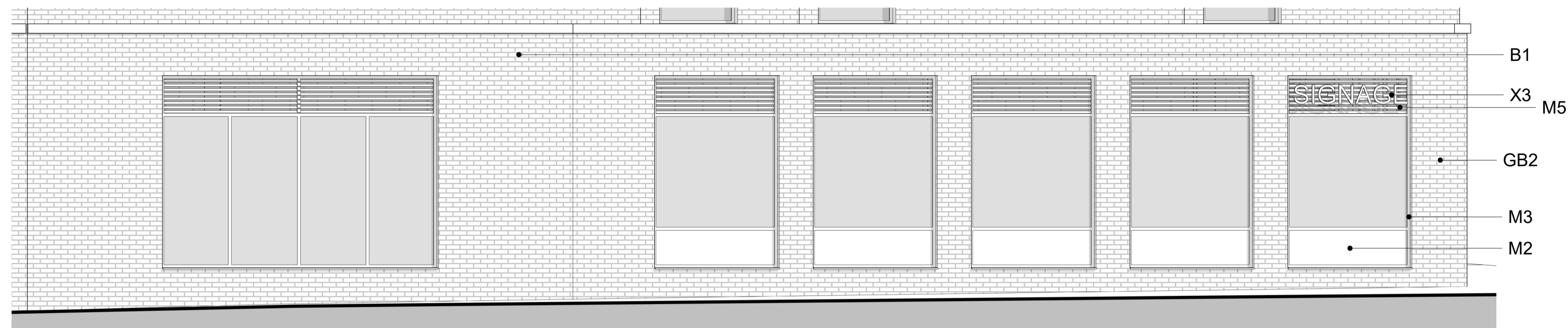
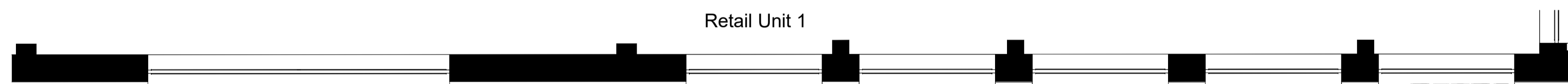


Elevation Legend



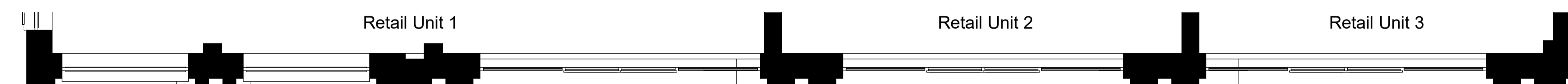
1 Block A_GA Elevation_Chandlers Walk_1-50_Retail Shopfront
 1 : 50



GA Block A Level_00 Chandlers Walk_1-50_Retail Shopfront
 1 : 50



2 Block A_GA Elevation_High Street_1-50_Retail Shopfront
 1 : 50



GA Block A Level_00 High Street_1-50_Retail Shopfront
 1 : 50

MATERIAL KEY

Brickwork
 B1_Brick – multi-tone Dark Red brickwork
 B2_Brick – multi-tone Light Red brickwork
 B3_Brick – white brickwork
 GB1_Brick – glazed Dark Red brickwork
 GB2_Brick – glazed White brickwork

Metal Cladding
 M1_solid aluminium rainscreen cladding – grey beige
 M2_composite solid aluminium rainscreen infill panel - grey beige
 M3_aluminium windows - grey beige
 M4_aluminium vertical fins - grey beige
 M5_aluminium horizontal ventilation louvres - grey beige
 M6_aluminium balcony soffits - grey beige

Balustrade
 R1_metal vertical railings – grey beige
 R2_glazed balustrade

Miscellaneous
 X1_perforated aluminium privacy screen – grey beige (colour to match aluminium rainscreen)
 X2_Planters - Powder-coated solid aluminium planters – grey beige
 X3_Signage - metal signage
 X4_Cills - aluminium window cills- grey beige
 X4_Cills - reconstituted stone window cills

NOTE:
 ALL ELEVATION MATERIALS SHOULD BE READ IN CONJUNCTION
 WITH THE PROPOSED MATERIAL SCHEDULE.

Rev	Date	Revision Details	Dr	Ch
A	13/01/2023	First Issue	FS	SH

London: 76 Great Suffolk Street, London, SE1 0BL
 T 020 7928 2773 E london@ecearchitecture.com
 Sussex: 64-68 Brighton Road, Worthing, West Sussex, BN11 2EN
 T 01903 248777 E sussex@ecearchitecture.com
 Bristol: Wiestworks, Beacon Tower, Colston Street, Bristol, BS1 4XE
 T 0117 214 1101 E bristol@ecestwestworks.com

ECE Architecture
 www.ecearchitecture.com

The *pure lake* group
 The Distinctive Developer

Job Title
 136 High Street, Sevenoaks

Drawing Title
 Block A Retail Shopfront Plans and Elevations 1-50

Scale
 1:100 @ A1 / 1:200 @ A3
 metres 2 4 6 8 10

Project	Originator	Zone	Level	Type	Displ.	Dwg. No.	Rev
7150	-ECE	V1	00	DR	A	0412	A

Status

S2 - Suitable for Information