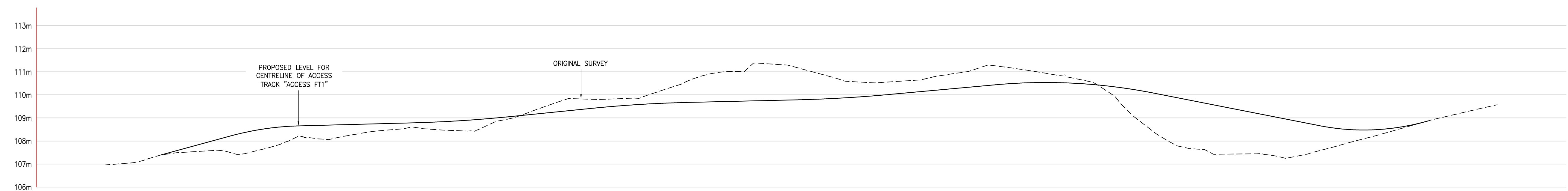
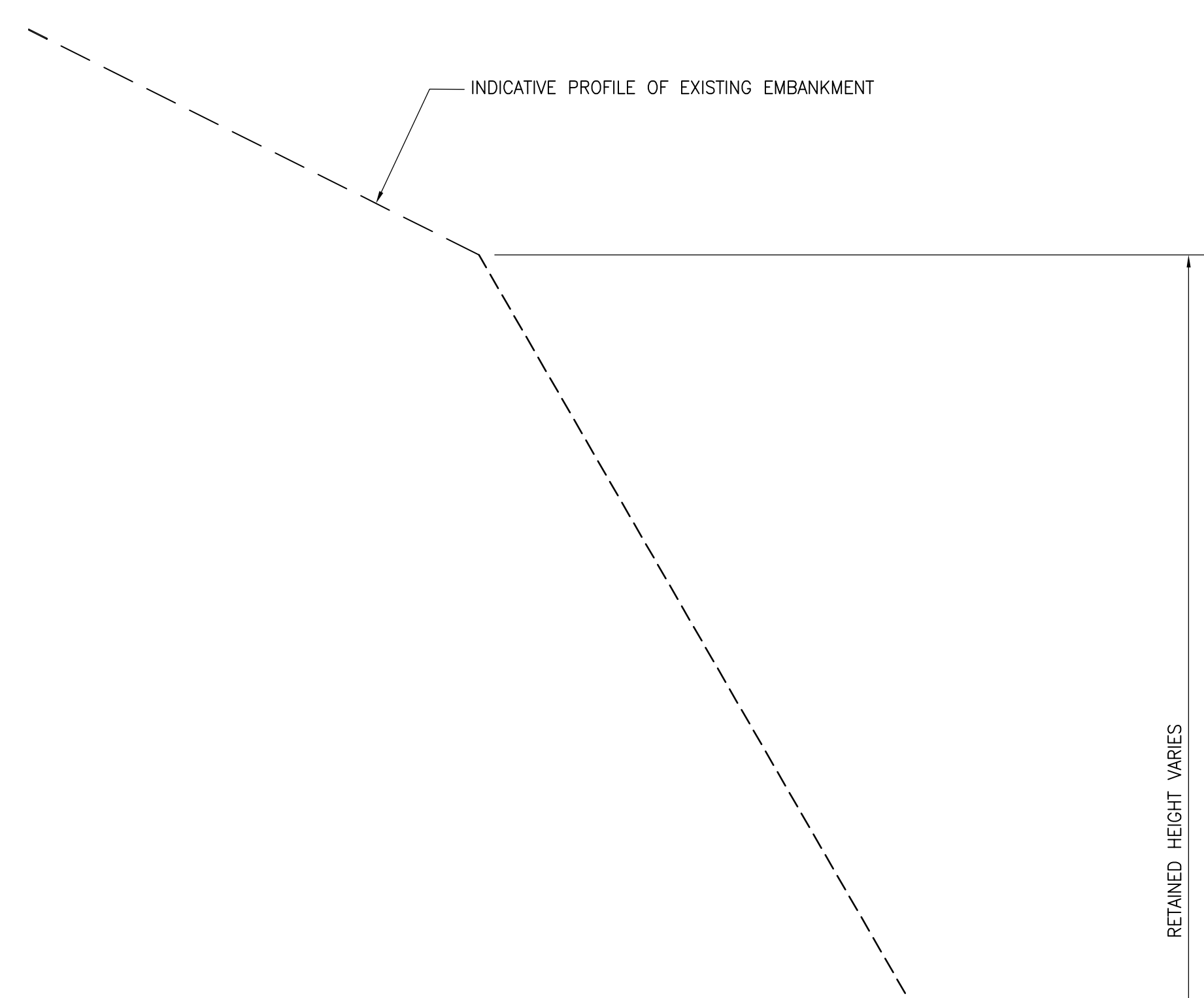


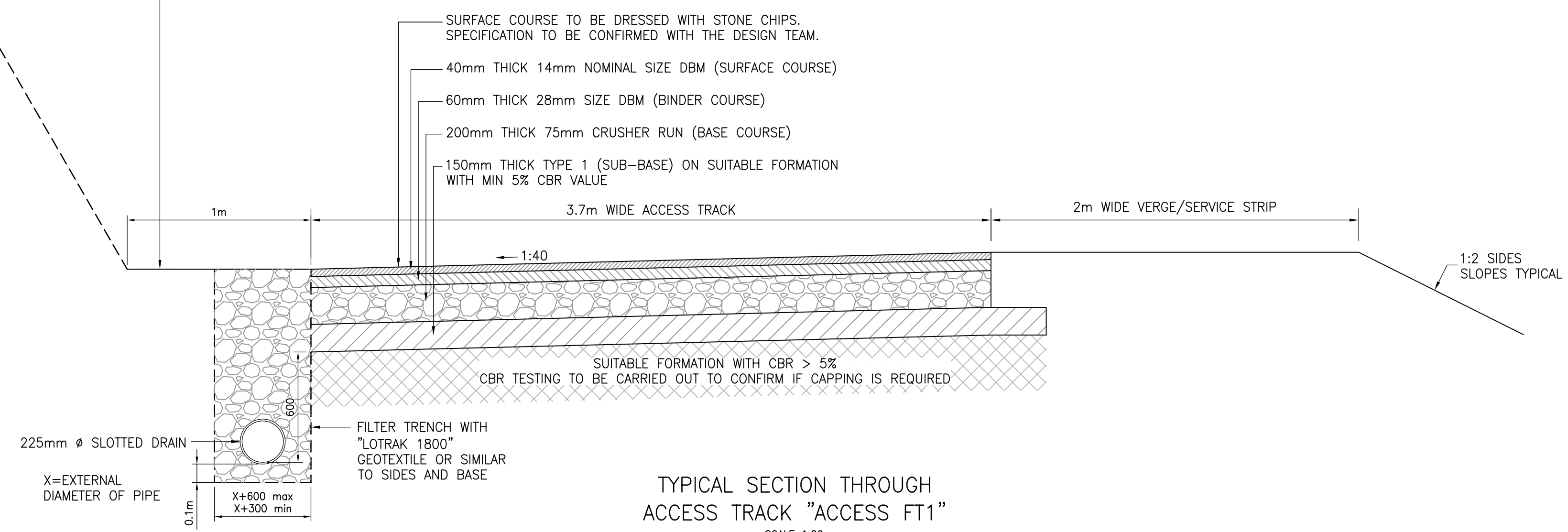
PLAN OF ACCESS TRACK "ACCESS FT1"
SCALE 1:500



LONG SECTION OF ACCESS TRACK "ACCESS FT1"
SCALE H=1:500, V=1:100



RETAINING STRUCTURE COMPRISING "MACCAFERRI GREEN TERRA MESH" OR SIMILAR



TYPICAL SECTION THROUGH ACCESS TRACK "ACCESS FT1"
SCALE 1:20



TYPICAL PHOTO OF "MACCAFERRI GREEN TERRA MESH" RETAINING STRUCTURE PRIOR TO VEGETATION ESTABLISHING



TYPICAL PHOTO OF "MACCAFERRI GREEN TERRA MESH" RETAINING STRUCTURE WITH ESTABLISHED VEGETATION

GENERAL:

- COPYRIGHT - T.A. MILLARD SCOTLAND LIMITED, CONSULTING ENGINEERS.
- ONLY SCALE FOR PLANNING PURPOSES
- THIS DRAWING IS TO BE READ IN CONJUNCTION WITH ALL RELEVANT ARCHITECTS AND ENGINEERS DRAWINGS AND SPECIFICATIONS.
- ALL DIMENSIONS ARE IN METRES UNLESS NOTED OTHERWISE.
- FOR MAIN DIMENSIONS REFER TO ARCHITECTS DRAWINGS.
- ALL LEVELS ARE IN METRES ABOVE ORDNANCE DATUM UNLESS NOTED OTHERWISE.
- TOPOGRAPHICAL SURVEY PROVIDED BY OTHERS.

THIS DRAWING IS NOT FOR CONSTRUCTION PURPOSES UNLESS DRAWING STATUS SPECIFIES "FOR CONSTRUCTION".

| REV | AMENDMENT DETAILS | DRAWN | APPROVED | DATE |
|-----|-------------------|-------|----------|------|
| | | | | |
| | | | | |
| | | | | |
| | | | | |
| | | | | |

| | | | |
|--|--------------------------------|------------------|--|
| PROJECT TAYMOUTH CASTLE KENMORE | DESIGNED BY WH | DRAWN BY WH | SCALE AS NOTED |
| DRAWING TITLE PROPOSED ACCESS TRACK BETWEEN DEERPARK BRIDGE AND ZONE 1 | CHECKED BY | APPROVED BY | DRAWING STATUS PLANNING APPLICATION |
| CLIENT THE RIVER TAY CASTLE LLP | DRAWING NUMBER 17864/03/101 | DATE 27.09.23 | REVISION |

Dundee Office
Seabrook
18 Greenmarket
Dundee
DD1 4QB

tel: 01382 237280
email: dundee@millardconsulting.co.uk
web: www.millardconsulting.co.uk

