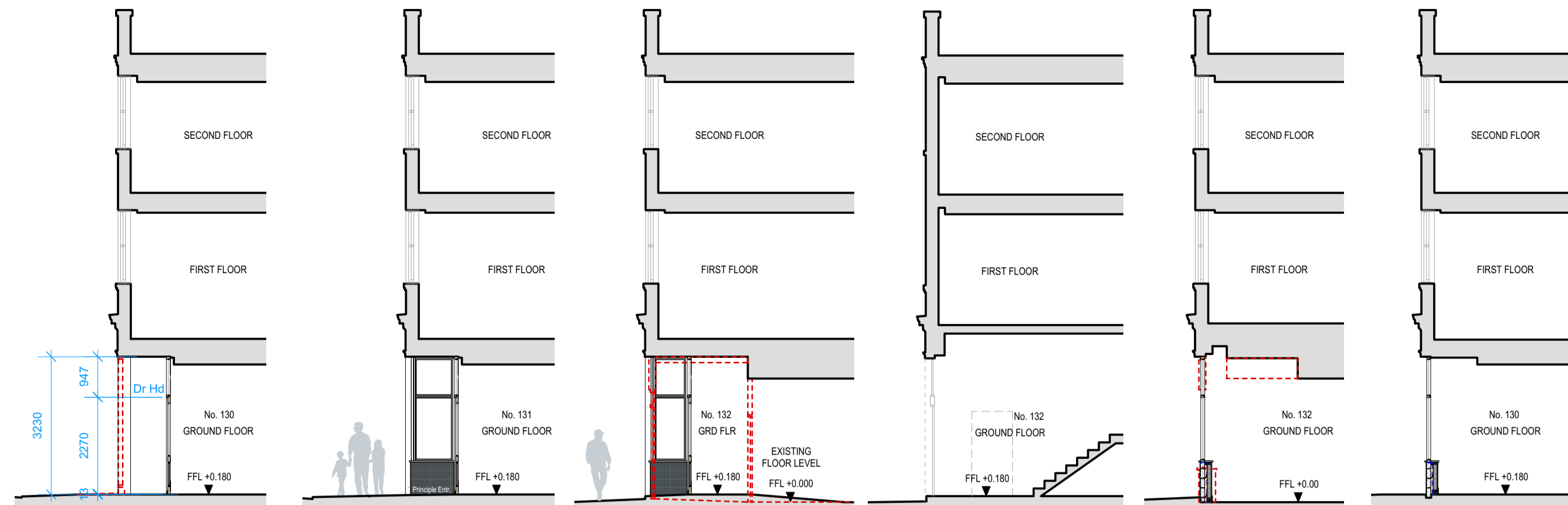
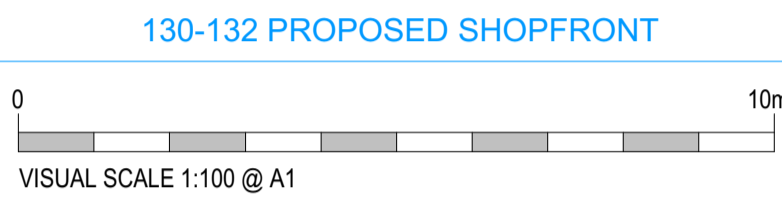




ELEVATION
1:100 @ A1



SECTION A-A
1:100 @ A1

SECTION B-B

SECTION C-C

SECTION D-D

SECTION E-E

SECTION F-F

FASCIA AND SHOPFRONT REPLACEMENT

MATERIALS AND FINISHES

- 1 Flashing over cornice repaired and fascia redecorated
- 2 Stallriser, shop window and transom light to recessed entranceway splayed return.
- 3 No. 130 - Timber framed window bay (approx. 4m) with two main panels, 4no. transom lights above and LHS recessed entrance door fixed shut.
- 4 No. 131 - 2no. timber framed bay windows (approx. 2m) each with 2no. transom lights above, set either side of centralised principle recessed entrance door.
- 5 No. 132 - Timber framed window bay (approx. 3m) with single panel, 3no. transom lights above and RHS recessed entrance door.
- 6 New plinth base and recessed panels added to all existing plain finished pilasters and repaired following removal of cover panel (a) and repainted in dark grey.
- 7 New masonry stallrisers to each shopfront with dark grey tiled finish.
- 8 Alarm cover to be replaced with appropriate alternative and colour matched
- 9 3no. new entrance doors with 1000mm clear opening, level thresholds where existing levels permit. Fanlights over. Entrance door to No. 130 fixed shut.
- 10 Incoming gas supply to be retained and interior fixtures incorporated within timber enclosure to rear side of stallriser.
- 11 3no. new recessed entranceways finished with graded non-slip decorative porcelain tiles.

BRANDING AND SIGNAGE

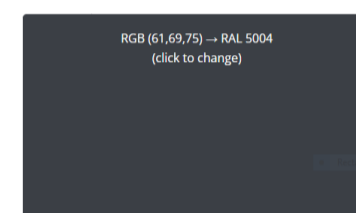
- 12 No. 130 & 132 - Bay windows and doors finished with branded obscured film applied to inside face of glass below transom level for privacy purposes.
- 13 No. 130 - Surface mounted stainless steel signage and hand painted grey signage to fascia.
- 14 No. 131 - Orange company logo on central door fanlight.
- 15 No. 131 - Dark grey/black company logo set into central door recess floor tiles.

PAINT FINISHES

- 16 Dark Grey Paint: Frames, fascia and pilasters.
- 17 Mid Grey Paint: Entrance doors, upper/lower cornice and existing double doors/fanlight to RHS.

Note: All exterior timber paintwork to be natural solvent-free Linseed oil paint in the selected colour.

PAINT COLOURS

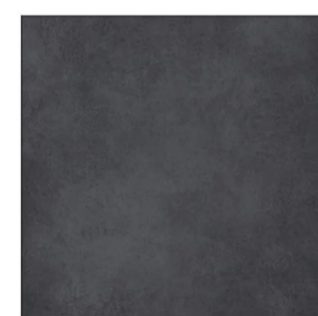


16 Frame, Fascia and Pilasters



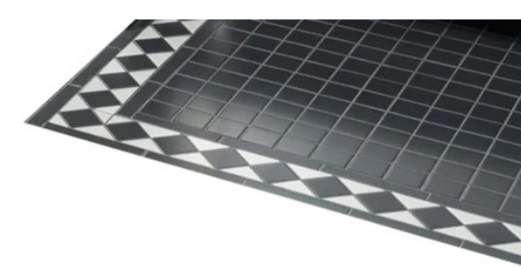
17 Entrance Doors and Cornice

STALLRISER



7 Dark grey matt finish

FLOOR TILES

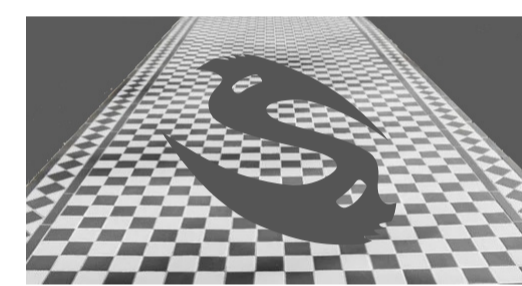


11 Nos.130 & 132 - Recessed entrance finished with Porcelain Tiles

FASCIA SIGNAGE



13 Surface mounted stainless steel signage Hand painted grey signage



15 No.131 - Central recessed entrance finished in porcelain tiles with inset dark grey/black company logo.



Nos.130-132 boarder edge tiles

1) This drawing is the copyrighted and may not be altered or reproduced in any way without written permission
 2) Written dimensions supersede manual or electronically scaled dimensions. All dimensions must be checked on site by Contractor before commencement of the works or fabrication
 3) This drawing is to be used only for the purposes intended as described in the Drawing Title box
 4) This drawing must be read in conjunction with all other Consultants drawings & specifications applicable to this project
 5) The information contained herein is confidential and may not be copied or disclosed to any other person or used for any purpose other than that for which it was originally prepared and supplied without the prior written consent
 CONSTRUCTION DESIGN & MANAGEMENT REGULATIONS 2015
 DESIGNERS HAZARD INFORMATION FOR CONSTRUCTION
 The notes below refer specifically to the information shown on this drawing. Refer to the Construction Phase Health and Safety Plan for further information.
 1) If you do not fully understand the risks involved during the construction of the items indicated on this drawing ask your Manager, Health & Safety Advisor or a member of the Design Team before proceeding.

LEGEND

--- Existing demolished

GLAZING

10.8mm laminated safety glass

EXTERNAL DOORS

External Door - Opening Inwards

Hung on Stainless Steel Butt Hinges

Easy T 5 Lever Sash Lock Stainless Steel

Hampstead Lever Lock Handle Polished or Satin Chrome TBC

Satin Stainless Steel Box Section Flush Bolt 200 x 19mm TBC

Timber Type: Sapele Hardwood

WINDOW FRAMES

Timber Type: Sapele Hardwood

WOOD FINISH

Linseedpaint.com - Brouns & Co

Linseed Oil and Paint Exterior Collection

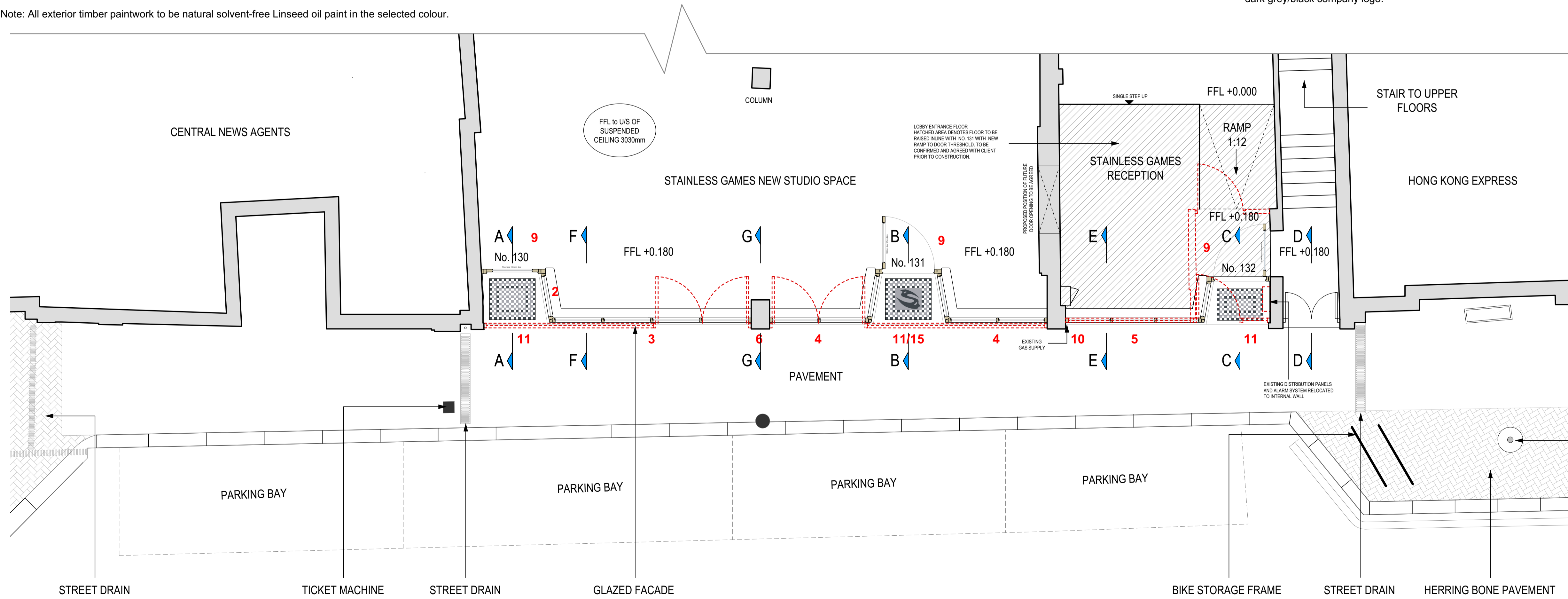
All timber sanded with 120 grit

Treat all Knots with Shellac Knotting Primer

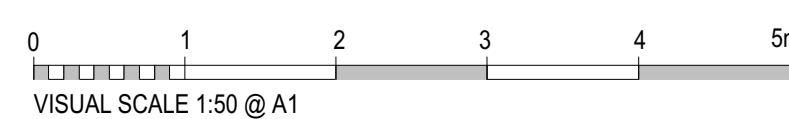
Prime wood with one coat of Primer #1

Finish with three coats of top coat.

NOTE: Refer to Linseedpaint.com for full preparation and application directions.



PLAN
1:50 @ A1



Ref.	Date	Description	By	Chkd
A	24-11-23	Section E-E & F-F added	TH	

P1 PLANNING



03300 240365 www.ermc.co.uk info@ermc.co.uk

Client: Stainless Games

Project Title: Shopfront alterations

130-132 High Street

Newport PO30 1TP

Drawing Title / Description: Replacement Shopfront

Proposed Plans, Elevations and Sections

Our Project Ref.	Scale	Date	Drawn	Chkd
2827	1:50 @ A1	19/09/23	TH	
	1:100 @ A1			

Client Project Ref.	Originator	Zone	Level	Type	Rev	Drawing No.	Rev.
2827	ERM	00	DR	A	0011	A	

This drawing has a Copyright. Permission to use is required.