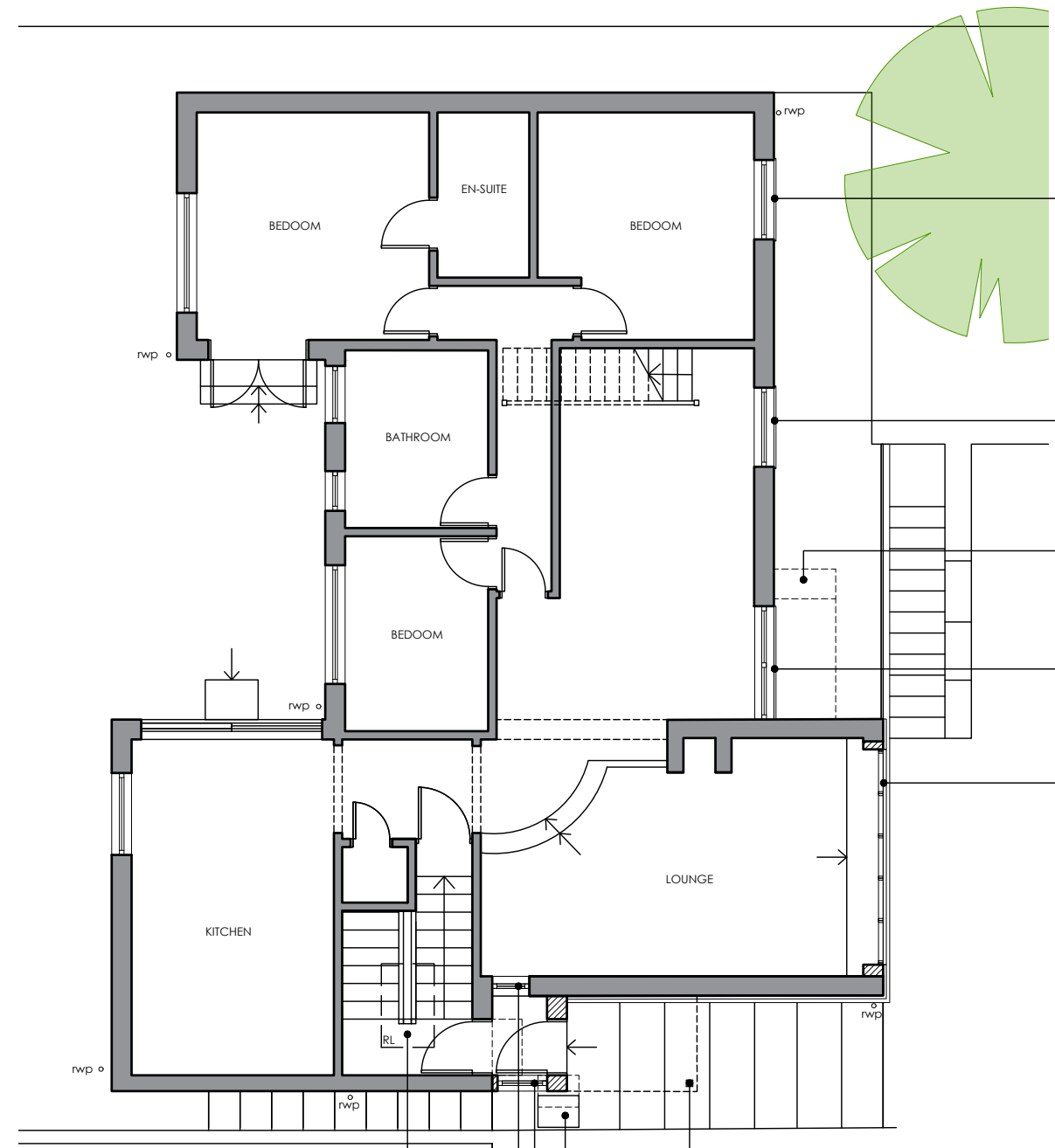


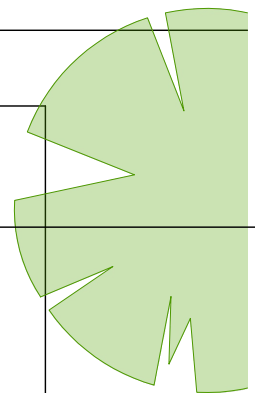
LOWER FLOOR PLAN

New oak barn-style garage doors in existing opening.



GROUND FLOOR PLAN

- Existing drainage inspection chamber cover relocated.
- New entrance porch with glazing on South elevation.
- Existing window retained.
- New roof light.



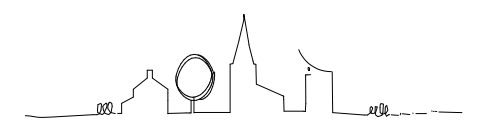
New metal window in oak sub-frame.

New metal window in oak sub-frame.

Steps removed

New metal window in oak sub-frame.

New 5-panel metal window in oak sub-frame with lead drip over. Existing window opening reduced in size.



Revision	Date	Initials	Notes
A	14/11/23	ER	Notes added.

WESTBURY SUB-MENDIP
APPLE ROCK

Floor Plans,
As Proposed

PLANNING

benjamin + beauchamp
 architecture design conservation
 the borough studios, the borough,
 wedmore, somerset BS28 4EB
 T 01934 713313 F 01934 713314

Drawn By	Date	Scale
ER	27/09/23	1:100 at A3

0990.P.001 A

