

SCHEDULE OF FIXINGS

CONSTRUCTION DETAIL	NAIL SIZE (mm)	NUMBER AND/OR SPACING OF NAILS
<b>FOUNDATION</b>		
SOLE PLATE - HALF LAPPED - BUTT JOINTED	75 x 3.75	2: SKEW NAILED
	75 x 3.75	2: SKEW NAILED, ONE EACH SIDE
<b>WALL FRAMING</b>		
BOTTOM RAIL TO SOLE PLATE - RING SHANK NAILS	75 x 3.75	300mm CENTRES, SKEW NAILED
STUD TO BOTTOM RAIL AND STUD TO TOP RAIL	75 x 3.75	600mm CENTRES, SKEW NAILED
	90 x 4.0	2: END NAILED
OR		
	60 x 3.35	4: SKEW NAILED
STUD TO NOGGING	75 x 3.75	2: SKEW NAILED
CRIPPLE STUD TO COMPONENT EDGE STUD	75 x 3.75	600mm CENTRES, FACE NAILED, STAGGERED
UNITS, BEARING ON CRIPPLE STUD TO STUD	90 x 4.0	4: FACE NAILED
UNITS (P/WO MEMBERS)	90 x 4.0	300mm CENTRES, FACE NAILED, STAGGERED
PLATE BELOW OPENING TO CRIPPLE STUD	90 x 4.0	2: END NAILED
PLATE (AS ABOVE) TO STUDS BELOW OPENING	90 x 4.0	2: FACE NAILED
STUD TO STUD OR POST	90 x 4.0	600mm CENTRES, FACE NAILED, STAGGERED
HEAD BRIDER TO WALL PANEL	75 x 3.75	600mm CENTRES, FACE NAILED
<b>FLOOR FRAMING</b>		
JOISTS TO HEAD BRIDER OR TOP RAIL (OVER STUDS)	75 x 3.75	2: SKEW NAILED
JOISTS LAPPED OVER INTERNAL WALL	75 x 3.75	2: FACE NAILED
<b>PLASTERBOARD</b>		
THICKNESS (mm)		
12.5 / 15	40 x 2.65	WALLS: 150mm x 1; CEILING: NOT LESS THAN
12.5 x 12.5	40 x 2.65	5 NAILS ACROSS WIDTH OF BOARD.

STRUCTURAL SPECIFICATION FOR W.C.s:  
STUDS: 95x45mm MIN. C16 TREATED TIMBERS AT 600mm CTRS. NOGGINGS AT THIRD POINTS. DOUBLE SOLE PLATE FIXED TO SLAB AT 1.2m CTRS. WITH GALVANISED HELT HPS-1-8 OR SIMILAR APPROVED.

STUD SHEATHING AND INSULATION: 1x12.5mm MR PLASTERBOARD WITH TAPED AND FILLED JOINTS TO BOTH SIDES. FININGS AS SCHEDULE. TEMPORARY STABILITY TO BE ACHIEVED BY NAILING DIAGONAL BRACING ON ONE SIDE. FIT 50mm COVER APR1/200 INSULATION BETWEEN STUDS. WHITE EMULSION PAINT FINISH.

CEILING JOISTS: 220x44mm C16 TREATED TIMBERS AT 400mm CTRS. FULL DEPTH DWANGS AT QUARTER POINTS. 20mm MR B.G.C. CHIPSBOARD (GRADE P3) ON TOP. FININGS AS SCHEDULE. CEILING TO BE LINED WITH 12.5mm MR PLASTERBOARD, JOINTS TAPED AND FILLED. WHITE EMULSION PAINT FINISH.

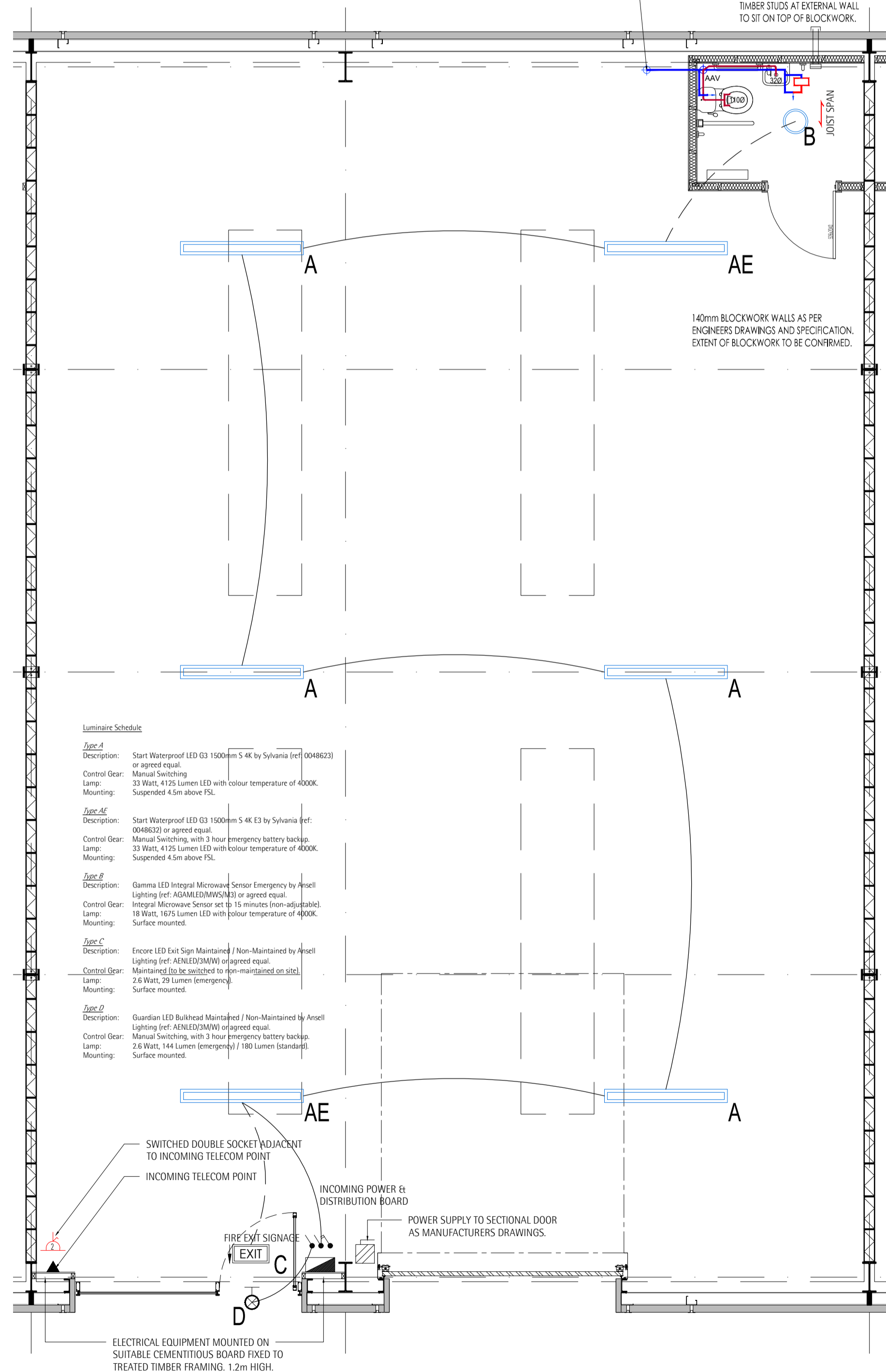
ALL TIMBER TO TIMBER FININGS AS SCHEDULE.

INCOMING WATER SUPPLY WITH DBL CHECK VALVE, PRV, ETC AS SHOWN.

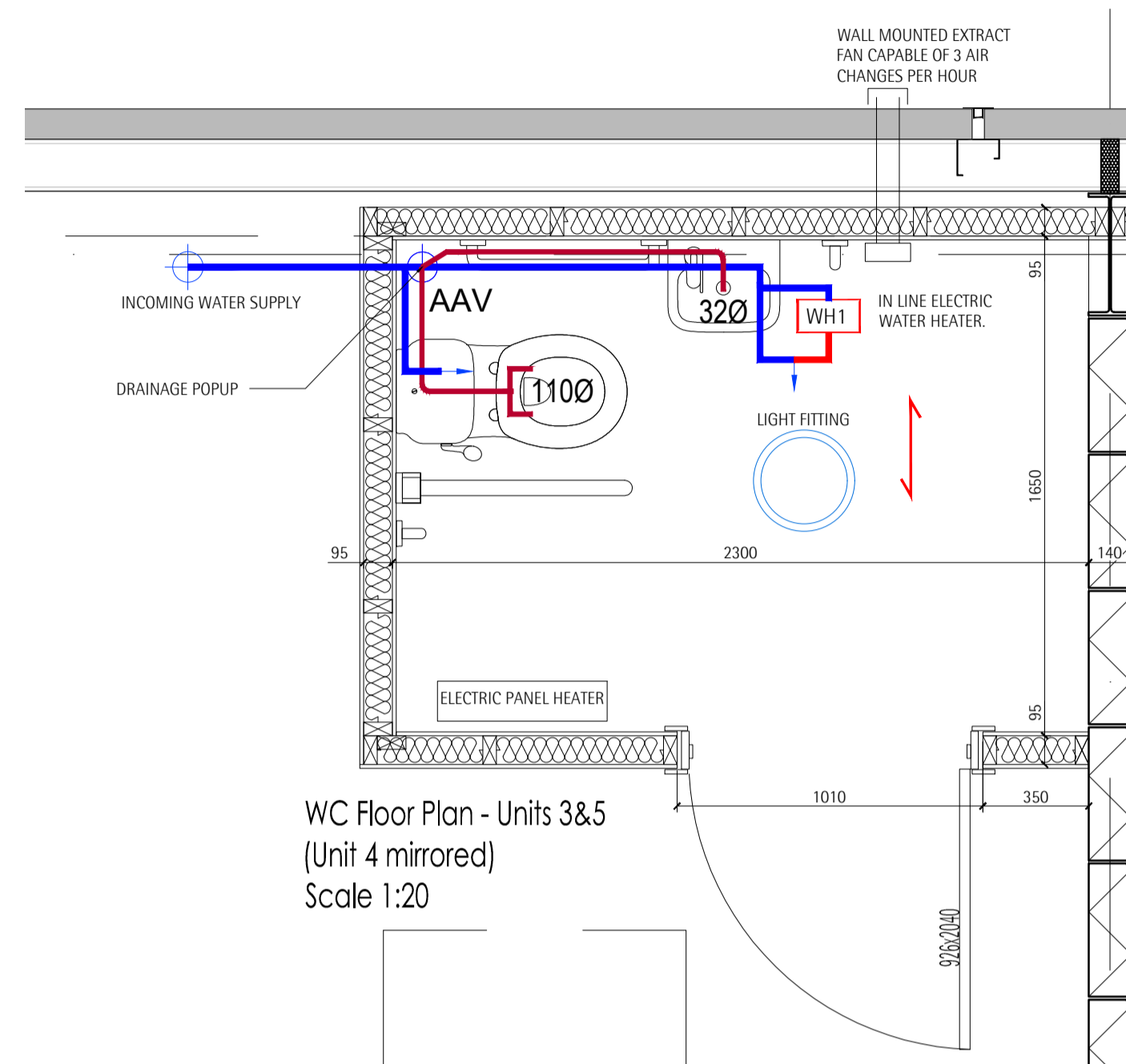
TIMBER STUDS AT EXTERNAL WALL TO SIT ON TOP OF BLOCKWORK.

ADJUST SPAN

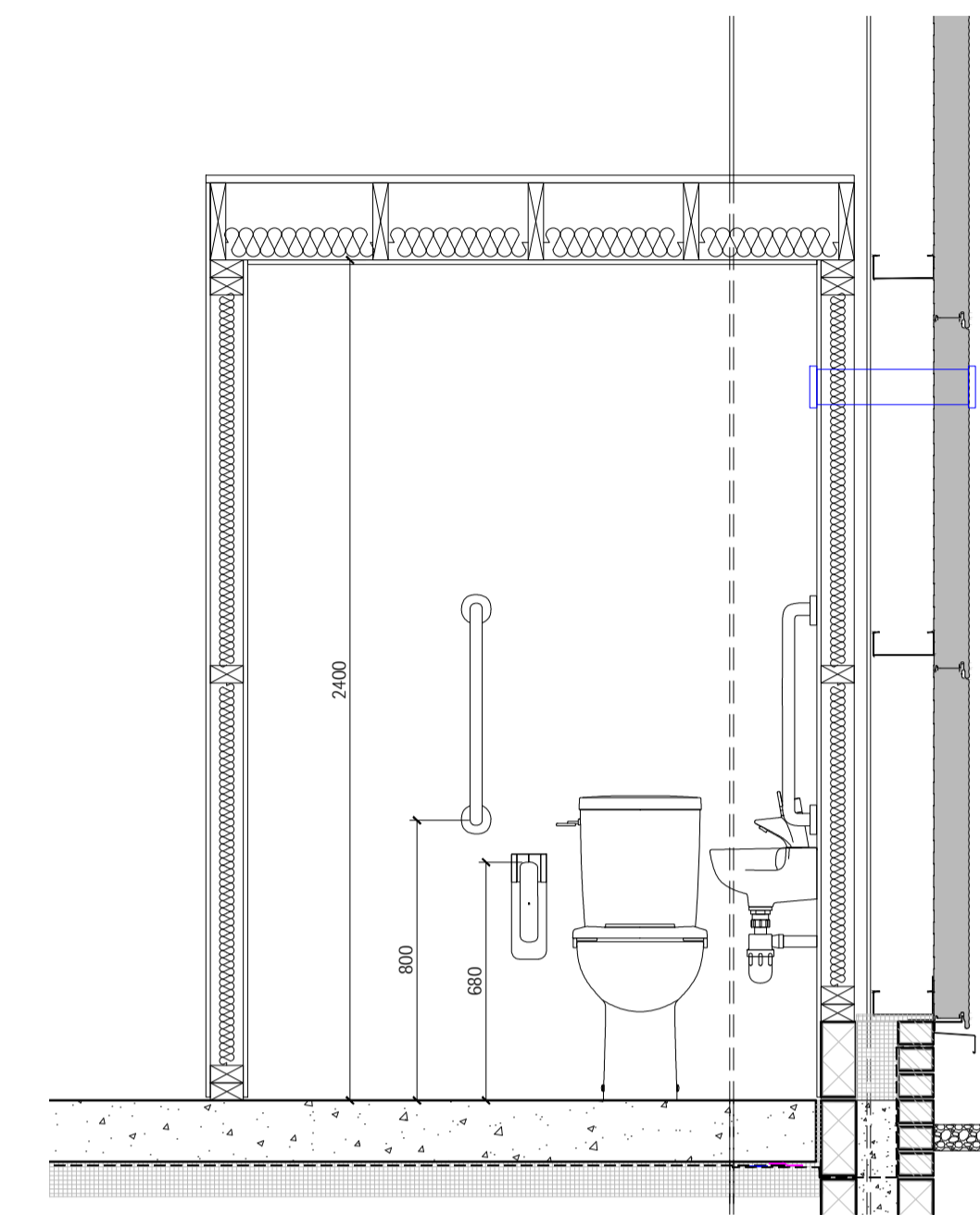
140mm BLOCKWORK WALLS AS PER ENGINEERS DRAWINGS AND SPECIFICATION. EXTENT OF BLOCKWORK TO BE CONFIRMED.



Typical Internal Layout (Units 3-5)  
Scale 1:50



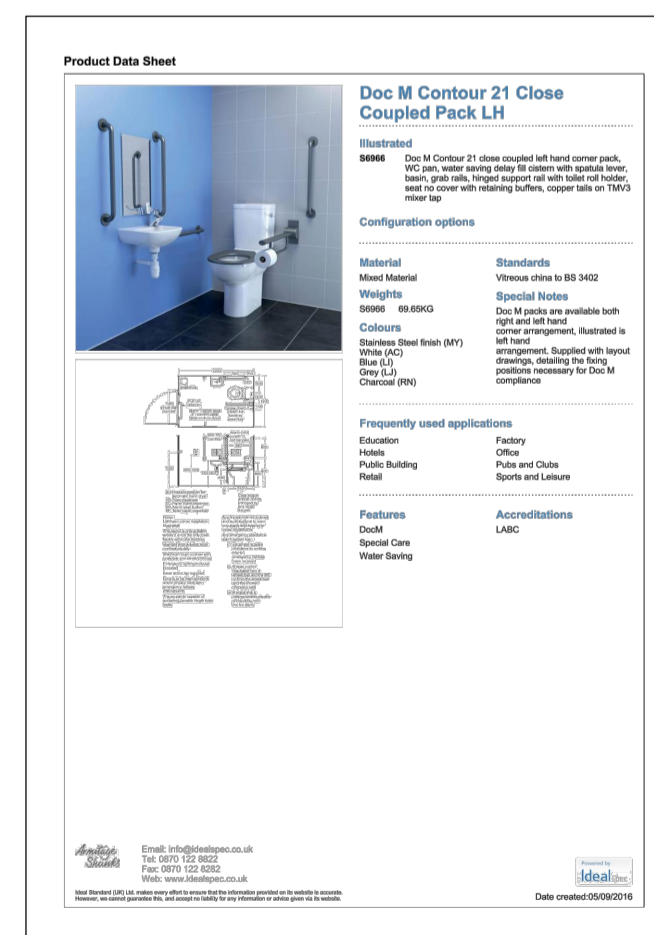
WC Floor Plan - Units 3&5  
(Unit 4 mirrored)  
Scale 1:20



Typical WC Section  
Scale 1:20

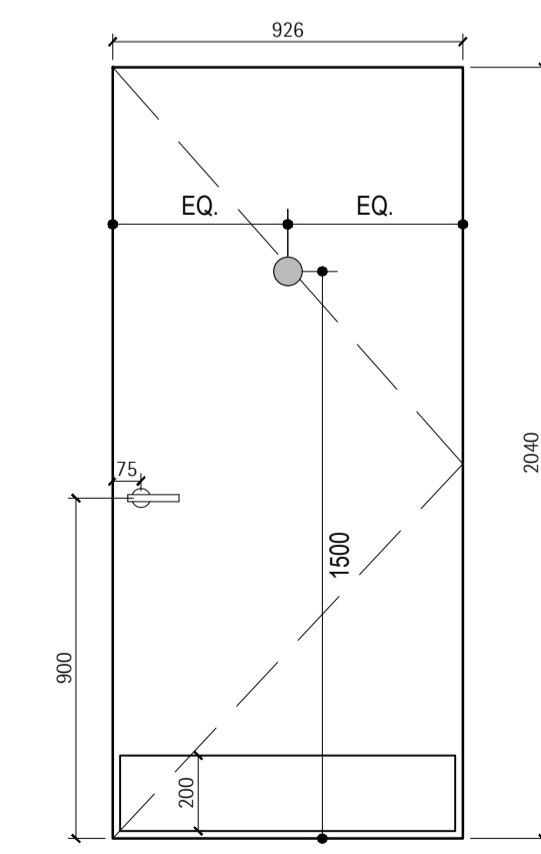
Luminaire Schedule

- Zone A**  
Description: Smart Waterproof LED (3) 1500mm S 4K by Sylvania (ref: 0048620) or agreed equal.  
Control Gear: Manual Switching.  
Lamp: 33 Watt, 4125 Lumen LED with colour temperature of 4000K.  
Mounting: Suspended 4.5m above FSL.
- Zone AE**  
Description: Smart Waterproof LED (3) 1500mm S 4K E2 by Sylvania (ref: 0048620) or agreed equal.  
Control Gear: Manual Switching, with 3 hour emergency battery backup.  
Lamp: 33 Watt, 4125 Lumen LED with colour temperature of 4000K.  
Mounting: Suspended 4.5m above FSL.
- Zone B**  
Description: Gamma LED Integral Microwave Sensor Emergency by Ansell Lighting (ref: A24LED30MW) or agreed equal.  
Control Gear: Integral Microwave Sensor set (3: 15 minutes (non-adjustable), 18 Watt, 1675 Lumen LED with colour temperature of 4000K.  
Lamp: 18 Watt, 1675 Lumen LED with colour temperature of 4000K.  
Mounting: Surface mounted.
- Zone C**  
Description: Encore LED Exit Sign Maintained / Non-Maintained by Ansell Lighting (ref: A24LED30MW) or agreed equal.  
Control Gear: Manual Switching, with 3 hour emergency battery backup.  
Lamp: 2.6 Watt, 29 Lumen (emergency).  
Mounting: Surface mounted.
- Zone D**  
Description: Guardian LED Bulkhead Maintained / Non-Maintained by Ansell Lighting (ref: A24LED30MW) or agreed equal.  
Control Gear: Manual Switching, with 3 hour emergency battery backup.  
Lamp: 2.6 Watt, 144 Lumen (emergency) / 180 Lumen (standard).  
Mounting: Surface mounted.



SPECIFICATION

DOC M CONTOUR 21 CLOSE COUPLED RIGHT HAND CORNER PACK COMPLETE WITH WC PAN, WATER SAVING DELAY FILL CISTERN WITH SPATULA LEVER, GRAB RAILS, HINGED SUPPORT RAIL WITH TOILET ROLL HOLDER, SEAT NO COVER WITH RETAINING BUFFERS, COPPER TAILS ON TAP/2 MIXER TAP AND WHB. AS SHOWN, TO BE FITTED IN ACCORDANCE WITH MANUFACTURERS WRITTEN INSTRUCTIONS. COLOUR: CHARCOAL.




DOOR LEAF	926x2040mm
GLASS	10mm
GLASS THICKNESS	10mm
GLASS TYPE	AS PER MANUFACTURER
GLASS FINISH	AS PER MANUFACTURER
GLASS MOUNTING	AS PER MANUFACTURER
GLASS COLOUR	AS PER MANUFACTURER
GLASS TREATMENT	AS PER MANUFACTURER
GLASS TYPE	AS PER MANUFACTURER
GLASS FINISH	AS PER MANUFACTURER
GLASS MOUNTING	AS PER MANUFACTURER
GLASS COLOUR	AS PER MANUFACTURER
GLASS TREATMENT	AS PER MANUFACTURER
GLASS TYPE	AS PER MANUFACTURER
GLASS FINISH	AS PER MANUFACTURER
GLASS MOUNTING	AS PER MANUFACTURER
GLASS COLOUR	AS PER MANUFACTURER
GLASS TREATMENT	AS PER MANUFACTURER

- IRONMONGERY
- 3.5 PAIRS STAINLESS STEEL HINGES
  - PAIR 19mm dia. LEVER HANDLES ON
  - ROUND ROSE
  - INDICATOR / RELEASE AND DDA
  - THUMBTURN
  - EURO PROFILE MORRICE BATHROOM LOCK
  - 2no. KICK PLATES 200mm HIGH
  - 1no. ACC WC SIGN

NOTES.

REV.	AMENDMENT	DATE	BY
C1	CONSTRUCTION ISSUE	04/09/2020	SS
A	Issued to Brian Kane	02/09/2020	SS
T1	Tender Issue	17.06.2020	GB



16 Beech Manor  
Stoneywood  
Aberdeen  
AB21 9AZ

Tel: 01224 713713 Email: aberdeem@dandara.com Web: www.dandara.com

CLIENT:	Portlethen Developments Ltd.		
PROJECT:	City South Business Park Industrial Starter Units - Phase 2		
DRAWING:	Units 3-5 WC & M&E Layout		
STATUS:	CONSTRUCTION		
SCALE:	shown	DATE:	MARCH 2020
JOB No.:	2537	NAME:	AI
DRAWING No.:	CSC_018	Rev:	C1