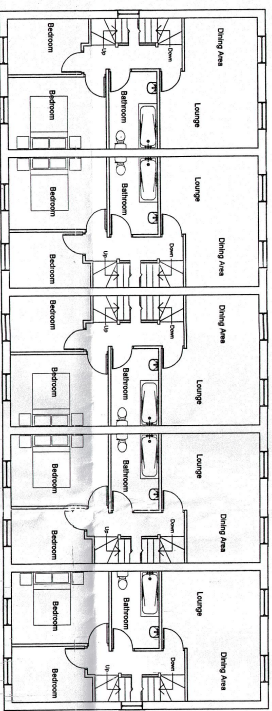
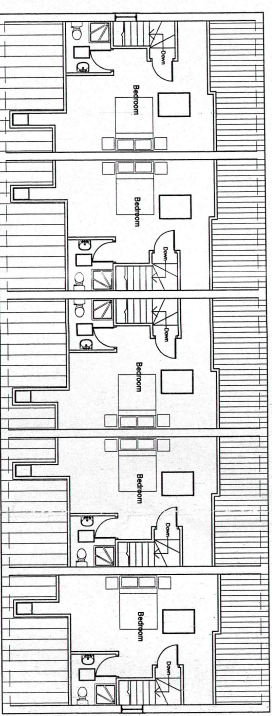


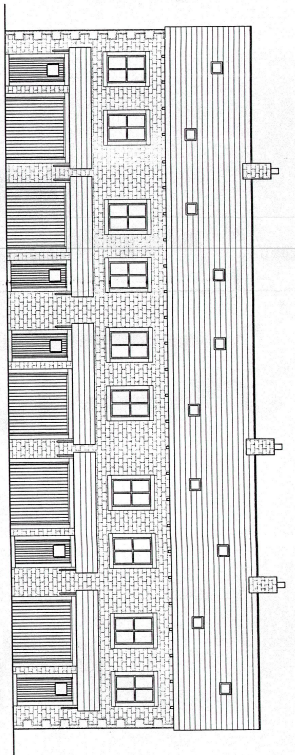
Ground Floor Plan



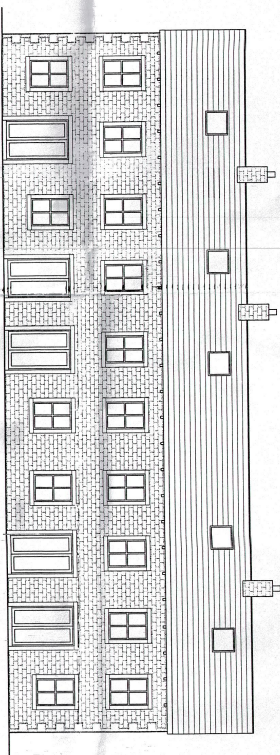
First Floor Plan



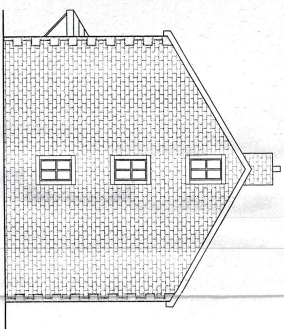
Second Floor Plan



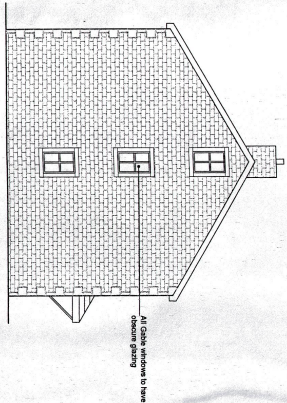
Front Elevation



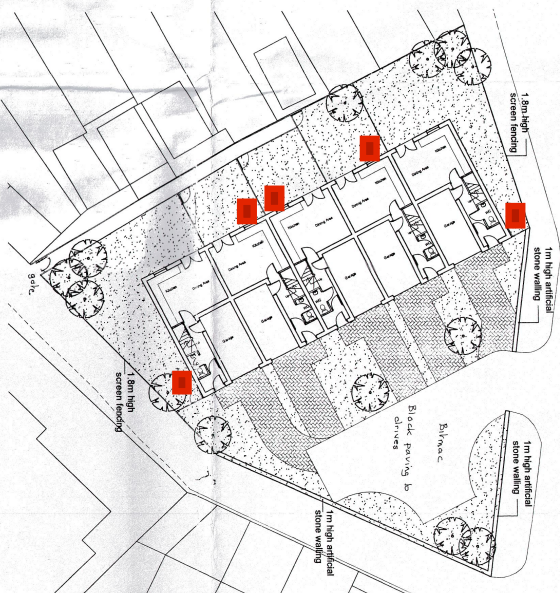
Rear Elevation



Side Elevation



Side Elevation



PROPOSED DEVELOPMENT TO PROVIDE 5 NO. 3 BEDROOM TOWN HOUSES

Land off Duncan Street, Rosegrove, Burnley.

Proposed Plans, Elevations and Site Plan



09 OCT 2018

Scales 1:100, 1:200

REV. A