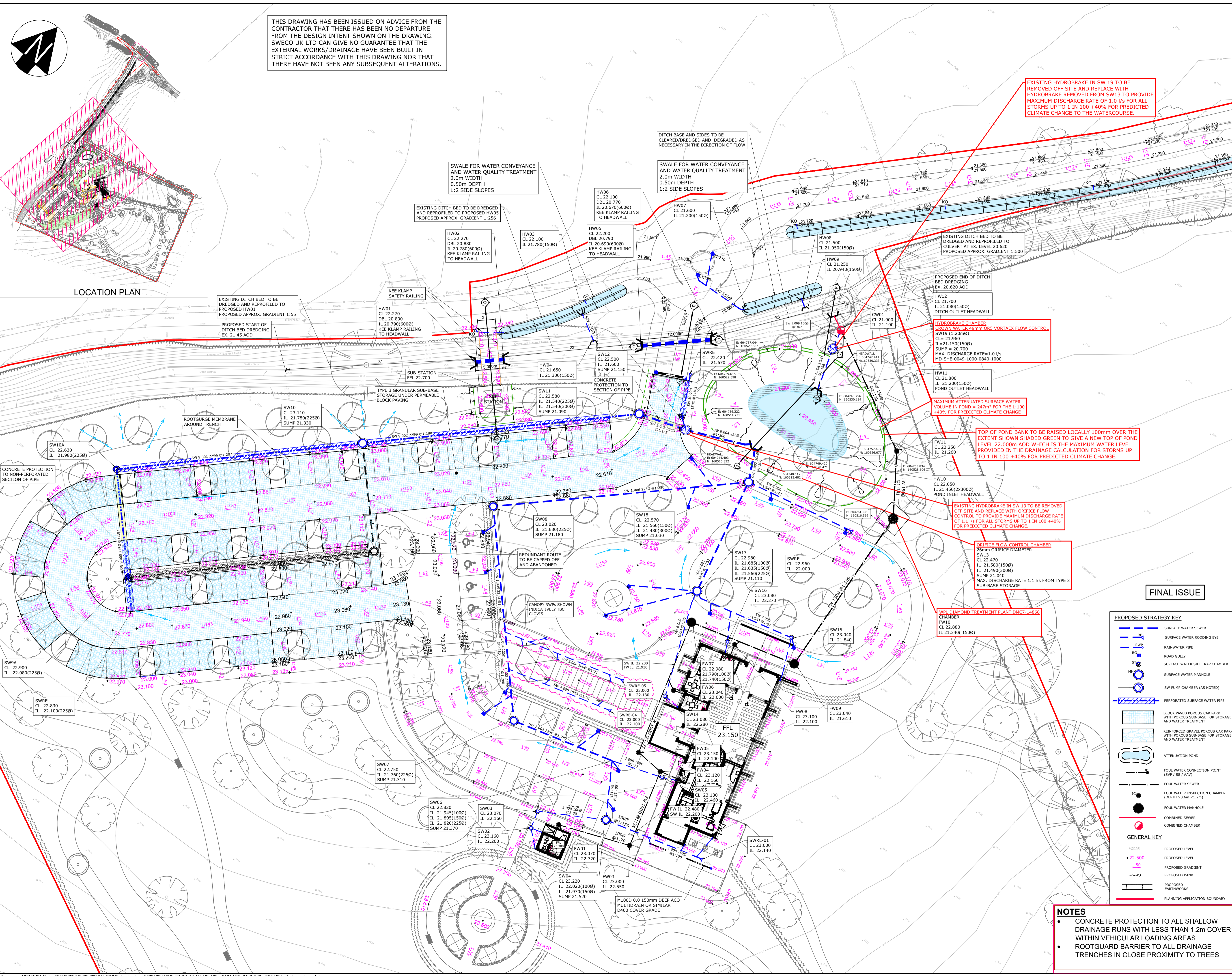


THIS DRAWING HAS BEEN ISSUED ON ADVICE FROM THE CONTRACTOR THAT THERE HAS BEEN NO DEPARTURE FROM THE DESIGN INTENT SHOWN ON THE DRAWING. SWECO UK LTD CAN GIVE NO GUARANTEE THAT THE EXTERNAL WORKS/DRAINAGE HAVE BEEN BUILT IN STRICT ACCORDANCE WITH THIS DRAWING NOR THAT THERE HAVE NOT BEEN ANY SUBSEQUENT ALTERATIONS.

NOTES

- GENERAL NOTES**
- THIS DRAWING IS TO BE READ IN CONJUNCTION WITH ALL RELEVANT ENGINEERS, ARCHITECTS AND SPECIALISTS DRAWINGS AND THE SPECIFICATION.
 - DO NOT SCALE** FROM THIS DRAWING MANUALLY OR ELECTRONICALLY. WRITTEN PERMISSION MUST BE OBTAINED FROM SWECO PRIOR TO SCALING ELECTRONICALLY OR USING THIS ELECTRONIC FILE.
 - ALL WORK IS TO BE CARRIED OUT IN ACCORDANCE WITH THE RELEVANT BRITISH STANDARDS, EUROPEAN STANDARDS, CODES OF PRACTICE AND BUILDING PRACTICE.
 - ALL DIMENSIONS ARE TO BE CHECKED BY THE CONTRACTOR PRIOR TO STARTING THE WORKS ON SITE. ANY DISCREPANCIES ARE TO BE REPORTED TO THE ENGINEER IMMEDIATELY.
 - FOR CIVIL & STRUCTURAL HEALTH & SAFETY HAZARDS PLEASE REFER TO DESIGNERS RISK ASSESSMENTS.
 - IF YOU DO NOT UNDERSTAND FULLY ANY OF THE DETAILS SHOWN ON THIS DRAWING CONTACT THE ENGINEER FOR CLARIFICATION.
 - THE CONTRACTOR SHALL OBTAIN PRIOR APPROVAL AND ALL NECESSARY LICENCES FROM THE HIGHWAY AUTHORITY BEFORE CARRYING OUT ANY WORKS WITHIN THE EXISTING PUBLIC HIGHWAY.
 - SURVEY INFORMATION TAKEN FROM TOPOGRAPHICAL SURVEY CAD FILE BY PARISH LAND SURVEYS DATED 30 SEPTEMBER 2019.
 - SITE LAYOUT BASED ON A GENERAL ARRANGEMENT LAYOUT LANDSCAPE DRAWING BY HAD DATUM/NOV 2022.
- DRAINAGE NOTES**
- ALL PRIVATE DRAINAGE WORKS SHALL BE IN ACCORDANCE WITH THE BUILDING REGULATIONS APPROVED DOCUMENT H AND BS EN 752:2008.
 - THE CONTRACTORS ATTENTION IS DRAWN TO DIAGRAMS 7 AND 8 OF THE BUILDING REGULATIONS APPROVED DOCUMENT H SHOWING DETAILS OF DRAINS Laid BELOW AND NEAR TO BUILDINGS WHERE GROUND BEAMS ARE USED. THEIR LEVEL SHALL BE SET TO AVOID CLASHING WITH DRAIN CONNECTIONS.
 - ACCESS FITTINGS, INSPECTION CHAMBERS AND MANHOLES SHALL BE CONSTRUCTED TO THE DIMENSIONS SHOWN IN TABLES 11 AND 12 OF THE BUILDING REGULATIONS APPROVED DOCUMENT H. INSPECTION CHAMBERS AND MANHOLES SHALL BE CONSTRUCTED IN ACCORDANCE WITH THE PRODUCTS DESIGNATED FOR THE LOCATION IN WHICH THEY ARE TO BE USED. THEY SHALL BE INSTALLED IN ACCORDANCE WITH THE MANUFACTURERS/SUPPLIERS RECOMMENDATIONS.
 - PRIOR TO COMMENCEMENT OF THE WORKS ALL DRAINAGE OUTFALL POINTS SHALL BE VERIFIED ON SITE BY THE CONTRACTOR. IF THE OUTFALL POINT IS FOUND TO BE HIGHER OR SIGNIFICANTLY LOWER THAN SHOWN ON THE DRAWINGS THEN THE CONTRACT ADMINISTRATOR SHALL BE NOTIFIED IMMEDIATELY (SIGNIFICANT REDUCTION OF DRAINAGE AND LEVELS MAY BE NECESSARY).
 - PRIOR TO COMMENCEMENT OF WORKS THE CONTRACTOR IS TO ARRANGE TRACKING OF THE FINISHED SURFACE TO ENSURE THAT NO LIVE CONNECTIONS REMAIN. ANY SUCH CONNECTIONS MUST BE REPORTED TO THE CONTRACT ADMINISTRATOR PRIOR TO DIVERSION INTO THE NEW DRAINS, WHICH MAY BE SUBJECT TO A SECTION 185 (WIA) TO BE APPROVED BY THE LOCAL WATER AUTHORITY.
 - ALL PRE-CAST AND IN-SITU CONCRETE AND MORTARS USED IN THE CONSTRUCTION OF FOUL DRAINS AND SEWERS SHALL BE MADE FROM SULPHATE RESISTING CEMENT.
 - ALL COVER LEVELS SHOWN ON THIS DRAWING ARE APPROXIMATE. EXACT LEVELS OF NEW COVERS AND FRAMES TO BE OBTAINED ON SITE TO MATCH LEVEL AND PROFILE OF FINISHED SURFACE.
 - UNLESS NOTED OTHERWISE ALL PIPEWORK SHALL BE 150mm DIAMETER LEAD TO A FALL OF 1 IN 80 OR STEEPER FOR SURFACE WATER AND 1 IN 40 OR STEEPER FOR FOUL WATER. FOUL DRAINS WITH ONE OR MORE W.C. CONNECTED MAY BE LAID AT 1 IN 80 OR STEEPER, WHERE APPROPRIATE ROAD GULLY CONNECTIONS SHALL BE 150mm DIA AT 1 IN 150 OR STEEPER.
 - UNLESS NOTED OTHERWISE ALL PIPEWORK SHALL BE CONSTRUCTED FROM SUPER STRENGTH VITRIFIED CLAY TO BS 85 OR BS EN 295 OR UNIC TO BS EN 1201 BEDDED AND BACKFILLED AS PER THE MANUFACTURERS RECOMMENDATIONS AND THE ABOVE LISTED PUBLICATIONS.
 - EXACT LOCATION OF GULLIES TO BE DETERMINED ON SITE TO SUIT LOW POINTS. THE CONTRACTOR SHALL ENSURE THAT ALL FINISHED SURFACE ARE LAID TO FALLS THAT ARE SUFFICIENT FOR ALL SURFACE WATER TO DRAIN WITHOUT SURFACE PONDING.
 - RAINWATER DOWNPIPES THAT DO NOT CONNECT DIRECTLY TO AN ACCESS POINT, SHALL BE FITTED WITH A RODDING ACCESS.
 - TESTING OF THE SURFACE WATER SYSTEM SHALL BE UNDERTAKEN IN ACCORDANCE WITH THE GUIDANCE IN BS EN 1410:1998.
 - ALL SANITARY PIPEWORK SHALL BE CONSTRUCTED AND INSTALLED IN ACCORDANCE WITH BS EN 12056-2:2000. SYSTEM 81 (SINGLE DISCHARGE STACK SYSTEM WITH FULL BORE BRANCH DISCHARGE PIPES) SHALL BE USED UNLESS OTHERWISE SPECIFIED BY ARCHITECT OR M&E ENGINEER.
 - FOR THE EXACT LOCATION OF SOIL PIPES, STRUCTURES, W.C.'S, RWPS AND OTHER DRAINAGE CONNECTIONS REFER TO THE ARCHITECTURAL BUILDING PLANS OR FREE ENGINEER DRAWINGS.
 - ALL EXTERNAL BUILDING DRAINAGE SHALL BE CONSTRUCTED AND INSTALLED IN ACCORDANCE WITH BS 12056-1:2000, BS EN 752-3:1997 (AMENDMENT 2), BS EN 12056-4:1998 AND BS EN 12056-5:1998.
 - TESTING OF THE COMPLETED WASTEWATER SYSTEM SHALL BE CARRIED OUT IN ACCORDANCE WITH BS EN 12056-2:2000 (SANITARY PIPEWORK) AND BS EN 12056-3:1995 FOR SURFACE WATER.
 - ALL EXCAVATIONS SHALL BE KEPT FREE OF STANDING WATER. THE CONTRACTOR SHALL ENSURE THE STABILITY OF ALL EXCAVATIONS IS MAINTAINED AT ALL TIMES.
 - ALL COVERS, GRATING AND FRAMES TO CHAMBERS, GULLIES, CHAMBERS ETC. SHALL BE OF THE CORRECT LOAD CLASS TO SUIT THEIR LOCATION IN ACCORDANCE WITH BS EN 124:1994.
 - LOAD CLASS A15 PEDESTRIAN AREAS (NOT ACCESSIBLE BY VEHICLES)
LOAD CLASS B125 PRIVATE DRIVES
LOAD CLASS C250 LIGHTLY TRAFFICATED ROADS
LOAD CLASS D400 MAIN ROADS
 - REFER TO SITE INVESTIGATION REPORT FOR EXISTING GROUND CONDITIONS AND ANY SPECIAL REQUIREMENTS FOR BURIED CONCRETE (CRITICAL REQUIREMENTS FOR BURIED CONCRETE SHALL INCLUDE ALL PRE-CAST AND IN-SITU CONCRETE AND MORTARS), WHERE APPROPRIATE REFER TO CONTAMINATION REPORTS FOR DETAILS OF CHEMICALS AFFECTING CHOICE OF MATERIALS AND OTHER ADDITIONAL REQUIREMENTS.



FINAL ISSUE

PROPOSED STRATEGY KEY

- SW: SURFACE WATER SEWER
- SWR: SURFACE WATER RODDING EYE
- RWP: RAINWATER PIPE
- ST: ROAD GULLY
- SWT: SURFACE WATER SILT TRAP CHAMBER
- SM: SURFACE WATER MANHOLE
- SP: SW PUMP CHAMBER (AS NOTED)
- SFP: PERFORATED SURFACE WATER PIPE
- CP: BLOCK PAVED POROUS CAR PARK WITH POROUS SUB-BASE FOR STORAGE AND WATER TREATMENT
- CGP: REINFORCED GRAVEL POROUS CAR PARK WITH POROUS SUB-BASE FOR STORAGE AND WATER TREATMENT
- AP: ATTENUATION POND
- FCP: FOUL WATER CONNECTION POINT (SVP / SS / AA)
- FW: FOUL WATER SEWER
- IC: FOUL WATER INSPECTION CHAMBER (DEPTH >0.6m <1.2m)
- M: FOUL WATER MANHOLE
- CC: COMBINED SEWER
- CCM: COMBINED CHAMBER

GENERAL KEY

- +22.50: PROPOSED LEVEL
- +22.500: PROPOSED LEVEL
- 1:50: PROPOSED GRADIENT
- 1:50: PROPOSED BANK
- 1:50: PROPOSED EARTHWORKS
- : PLANNING APPLICATION BOUNDARY

- NOTES**
- CONCRETE PROTECTION TO ALL SHALLOW DRAINAGE RUNS WITH LESS THAN 1.2m COVER WITHIN VEHICULAR LOADING AREAS.
 - ROOTGUARD BARRIER TO ALL DRAINAGE TRENCHES IN CLOSE PROXIMITY TO TREES

Rev	Date	Amendment Details	Drn	CHK	Appr
C11	21.09.2023	AMENDED FINAL ISSUE TO SUIT LATEST MD CALCULATION UPDATE	HB	CH	CH
C10	21.08.2023	FINAL ISSUE	MP	MCL	MCL
029	02.08.2023	UPDATED TO MATCH MICRODRAINAGE CALCULATIONS FOR THE DISCHARGE OF CONDITION 14 AND 15	HB	CH	CH
028	30.06.2023	SURFACE WATER PIPE REFERENCES ADDED INDICATIVE FLOOD EXTENT ACCESS	HB	CH	CH
027	20.02.2023	ATTENUATION POND SETTING OUT ADDED. SECTION THROUGH POND	DJA	CH	CH
026	08.02.2023	CAR PARK LEVELS AMENDED TO MATCH AS-BUILT LEVELS RECEIVED FROM SITE. AMENDMENTS TO DITCH BED LEVELS	HB	CH	CH
025	12.12.2022	CAR PARK LEVELS REVIEWED AND AMENDED IN LINE WITH COMMENTS RECEIVED BY EMAIL FROM SITE DATED 08.12.2022. PACKAGE TREATMENT PLANT RELOCATED	HB	CH	CH
024	15.11.2022	SURFACE WATER DRAINAGE IN THE OVERFLOW CAR PARK REVISED AS CLOUSED	HB	CH	CH
023	03.11.2022	LEVELS AROUND THE BUILDING ADJUSTED IN COORDINATION WITH ARCHITECT. DRAWING UPDATED TO SUIT ADDITIONAL HEADWALL INFORMATION ADDED	HB	CH	CH

This drawing should not be relied on or used in circumstances other than those for which it was originally prepared and for which it was specifically intended and for which it was specifically intended. Sweco UK Limited accepts no responsibility for this drawing to any party other than the person by whom it was commissioned. Any party which breaches the provisions of the disclaimer and indemnity Sweco UK Limited for all use or damage arising therefrom. COPYRIGHT © Sweco 2022

Building 7200
Cambridge Research Park
Cambridge
CB25 9TL
Tel: +44 (0)1223 632 800
Web: www.sweco.co.uk



MEMORIA

Project Title: **FAVERSHAM CREMATORIUM**

Drawing Title: **PROPOSED DRAINAGE LAYOUT SHEET 2**

Revision History

Rev	Date	Description	By	Check	Appr
S4		FOR REVIEW AND AUTHORIZATION	HB	CH	CH

Scale: 1:200

Drawing Number: **65204882-SWE-ZZ-XX-DR-C-0101**