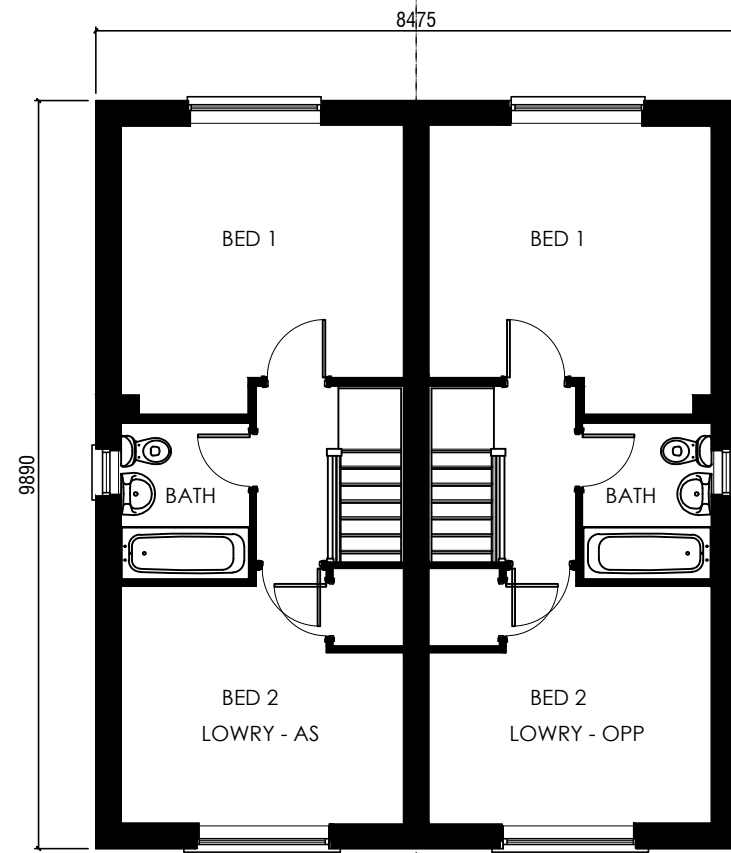
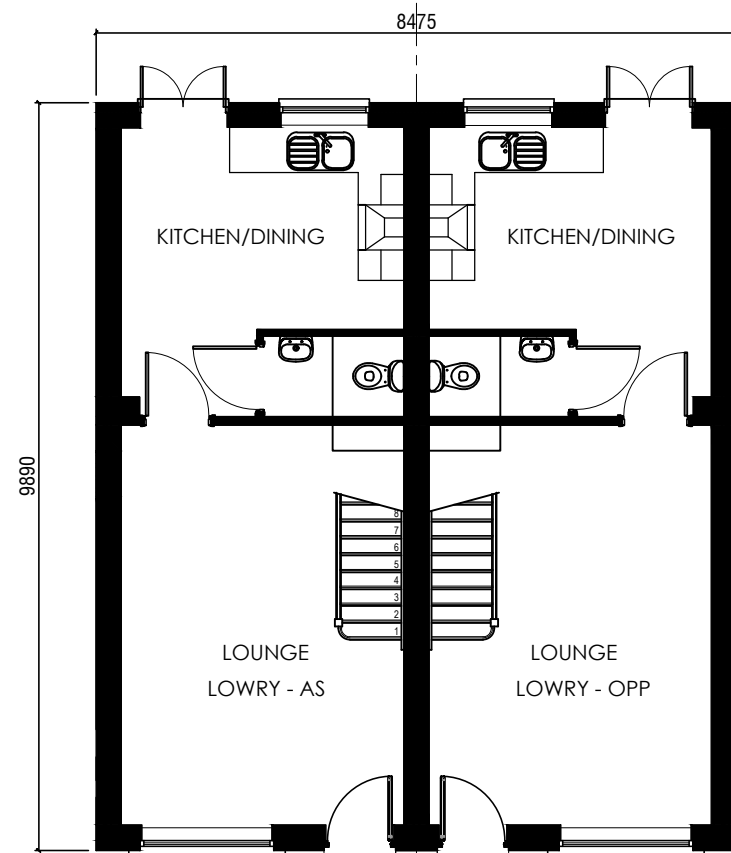


1 : 100



FIRST FLOOR PLANS

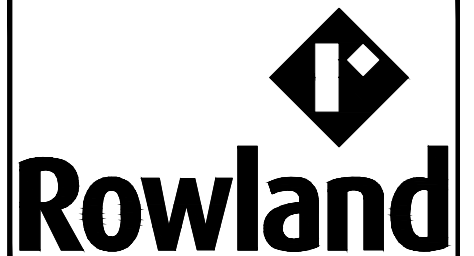


GROUND FLOOR PLAN

FLOOR AREA: 760ft² 70.6m²

NOTES

REV	DESCRIPTION	DATE
A	House Type name changed from A2 to Lowry	14.05.19



Rowland Homes Limited
 Farington House, Stanifield Business Park, Stanifield Lane,
 Leyland, Lancashire PR25 4UA
 Tel: 01772 621166 Fax: 01772 623552 www.rowland.co.uk

DRAWING
 LOWRY - 2 BLOCK PLANS

PROJECT
 LOWRY PLANNING DRAWING

SCALE	DATE	DRAWN	REV.	DRAWING No.
1:100 @A3	OCT '13	MCK/RHL	A	HT164/P/2/V1-1