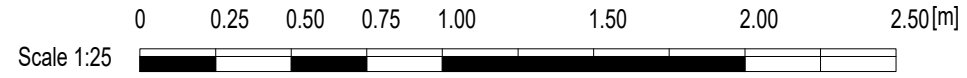


**Timber single glazed sash and case windows.**



**NOTES**

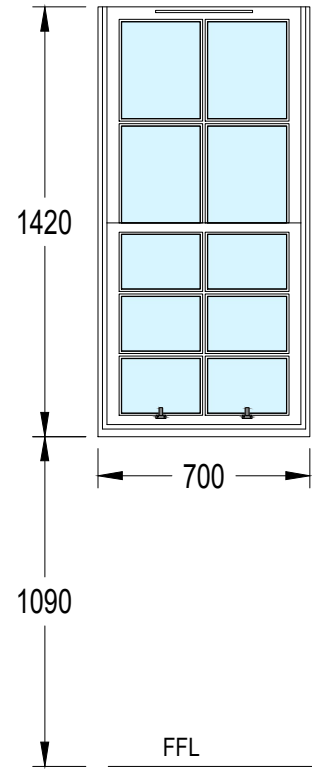
© copyright. All rights reserved, this drawing must not be copied or reproduced without the written consent of Summers-Inman Construction and Property Consultants LLP.

No dimensions are to be scaled from this drawing. All dimensions and sizes are in millimetres unless otherwise stated and should be checked on site.

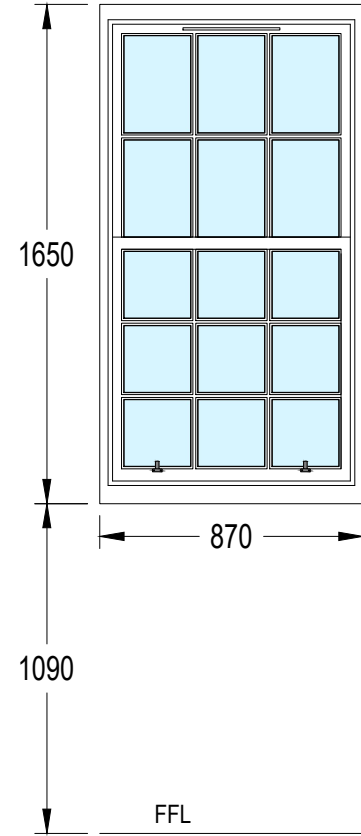
No part of this publication may be produced, stored in any retrieval system or transmitted in any form or by any means without prior permission of summers-inman construction and property consultants.

This drawing is to be read in conjunction with Summers-Inman Construction and Property Consultants' specification, structural engineer's and services consultant's specification where applicable.

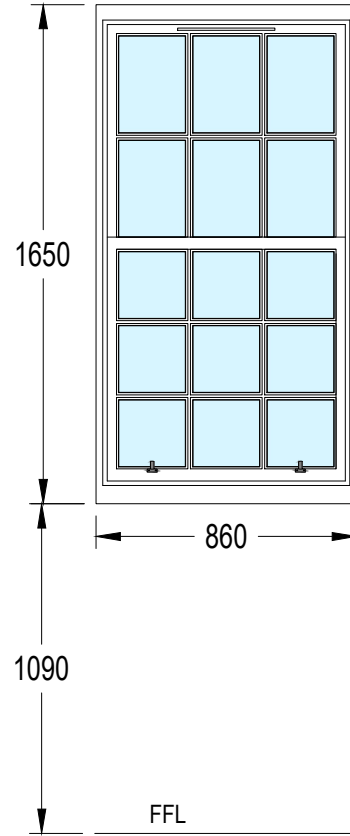
**W1 - Utility room window - Internal View**



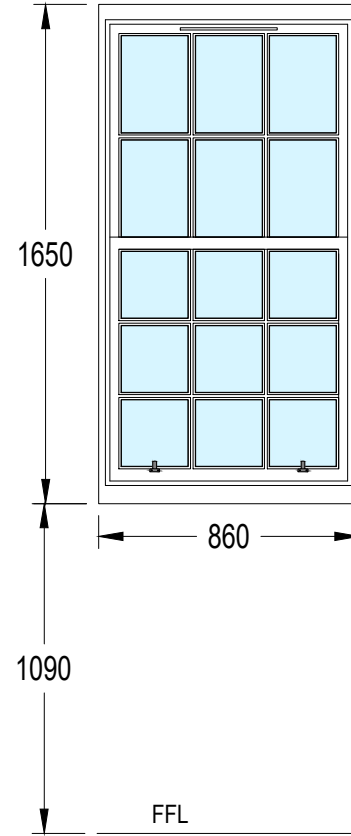
**W2 - Dining room window - Internal View**



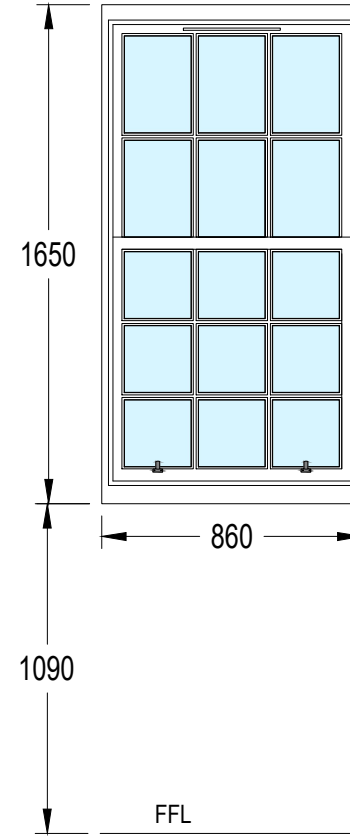
**W3 - Kitchen window - Internal View**



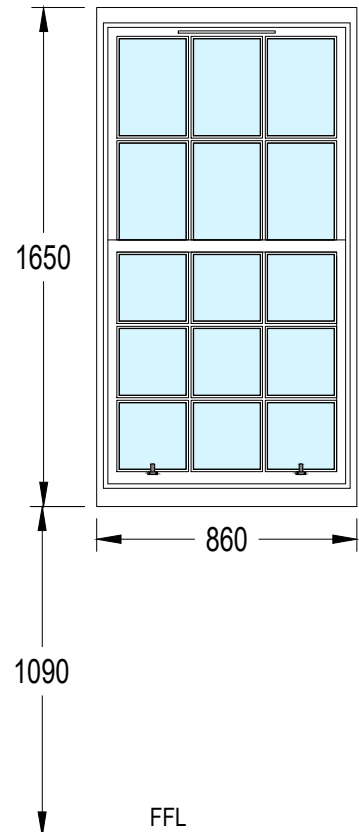
**W4 - Toilet window - Internal View**



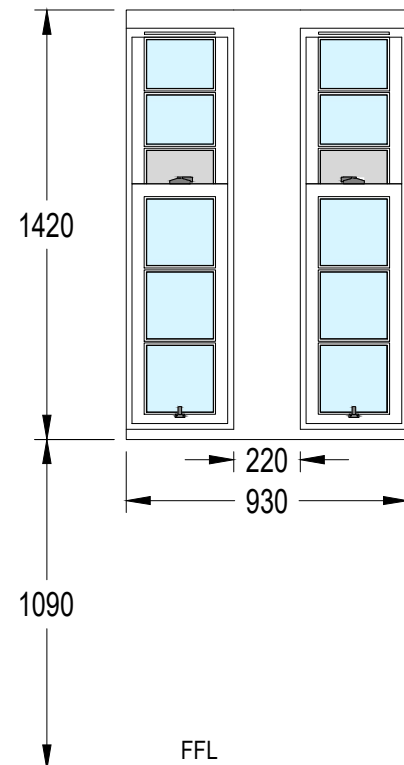
**W5 - Bedroom 1 window - Internal View**



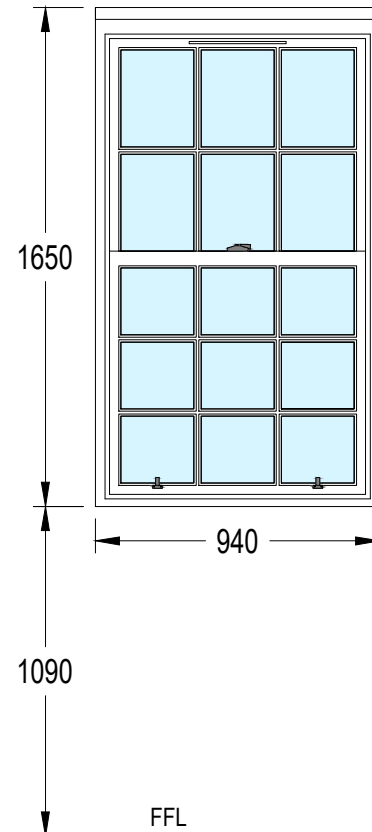
**W6 - Bedroom 2 window - Internal View**



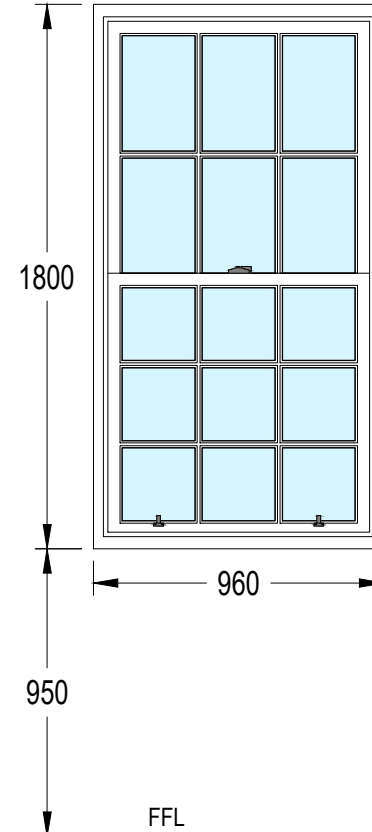
**W7, W8 & W9, W10 & W11, W12 - Living room windows - Internal View**



**W13 - Living room window - Internal View**



**W14, W15 - Hallway windows - Internal View**



Rev.	Description	Issue by	Date

**SUMMERS INMAN**  
CONSTRUCTION & PROPERTY CONSULTANTS

Suite 4, Pavilion 1, The Quadrant,  
14 New Mart Road, Edinburgh, EH14 1RL  
0131 455 9700  
edinburgh@summers-inman.co.uk  
www.summers-inman.co.uk

Drawing Status

**Statutory Consent**

Client  
The City of Edinburgh Council  
Project  
Windows Refurbishment, 41 2F Haddington Place, Edinburgh  
Title  
Existing Windows (Internal View)

Date NOV 23 Scale at A3 1:25 Drawn MJ Checked IM

Eh22040	-	SUM	-	XX	-	XX	-	DR	-	B	-	0104	-
Project	Originator	Zone	Level	Type	Role	Number	Rev.						