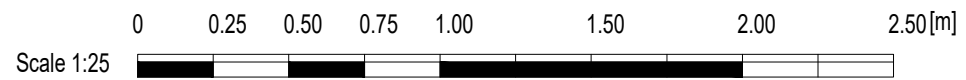


Timber double glazed sash and case window.



NOTES

© copyright. All rights reserved, this drawing must not be copied or reproduced without the written consent of Summers-Inman Construction and Property Consultants LLP.

No dimensions are to be scaled from this drawing. All dimensions and sizes are in millimetres unless otherwise stated and should be checked on site.

No part of this publication may be produced, stored in any retrieval system or transmitted in any form or by any means without prior permission of summers-inman construction and property consultants.

This drawing is to be read in conjunction with Summers-Inman Construction and Property Consultants' specification, structural engineer's and services consultant's specification where applicable.

NOTES

All dimensions are to be checked on site before work commences and the manufacturing any components. Any discrepancies should be reported to the CA. All work to be carried out to the satisfaction of the contract administrator and clerk of works.

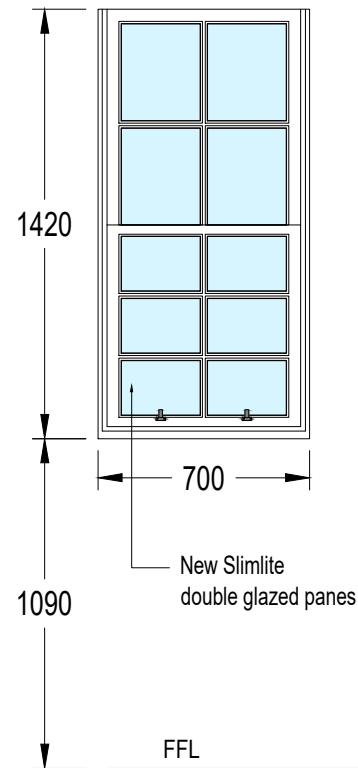
It is the Contractors responsibility to make good any damage caused upon completion of works. All internal finishes to be retained, to be suitably protected by the contractor & any damage to be made good to contract administrators satisfaction.

BUILDING WORKS

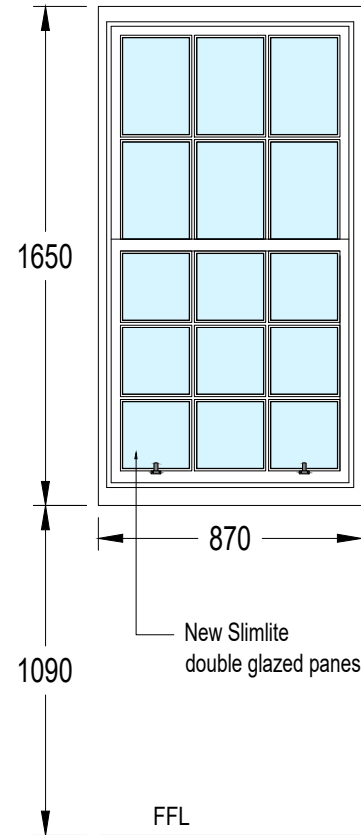
The contractor is to ensure all appropriate services have been disconnected before starting work.

Refurbished Slimlite double glazed panes to be installed in existing timber sash and case windows. The double glazed panes will be 14mm wide with 4mm panes and 6mm cavity. The existing sash and cases shall be overhauled and re-decorated (white painted finish) including renewing broken ironmongery and cords.

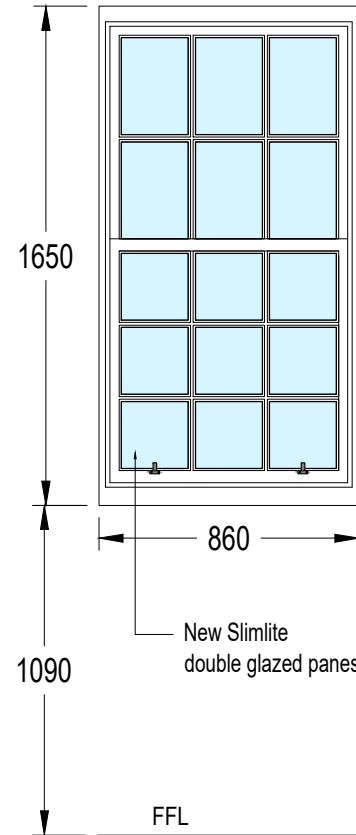
W1 - Utility room window - Internal View



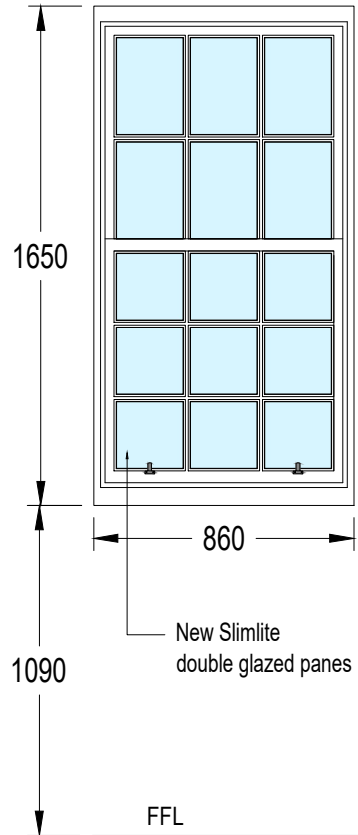
W2 - Dining room window - Internal View



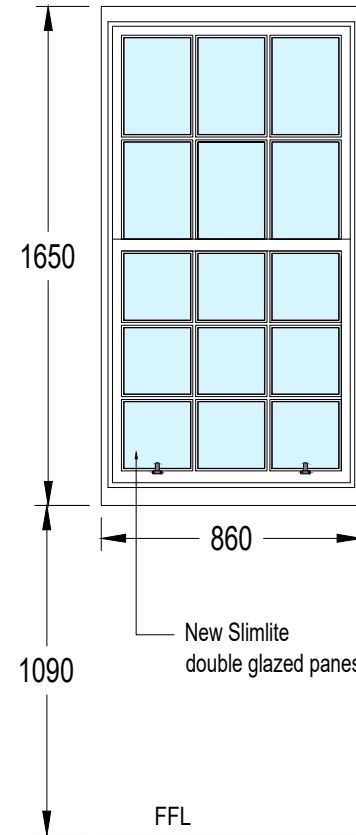
W3 - Kitchen window - Internal View



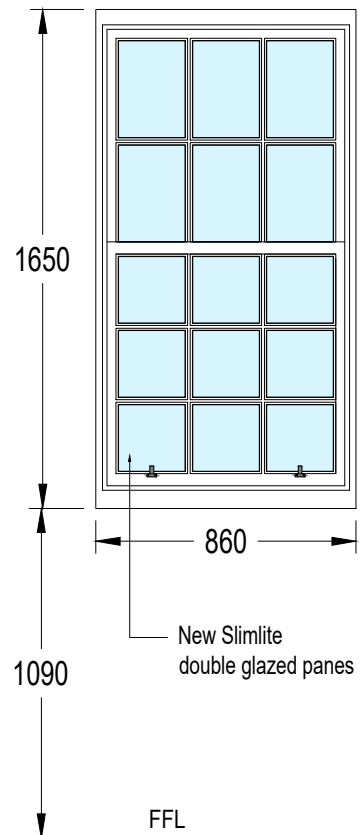
W4 - Toilet window - Internal View



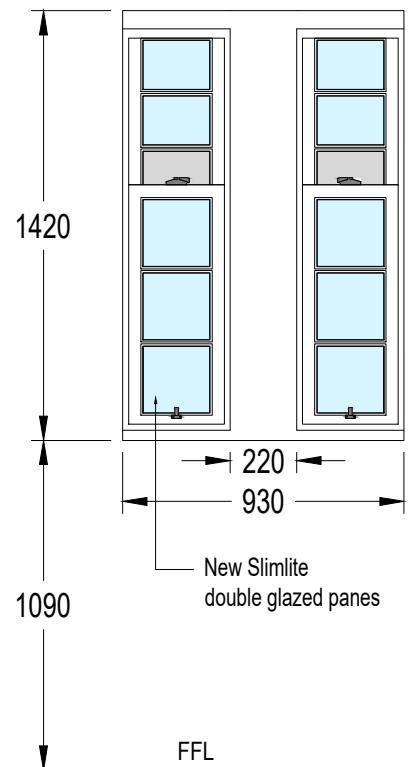
W5 - Bedroom 1 window - Internal View



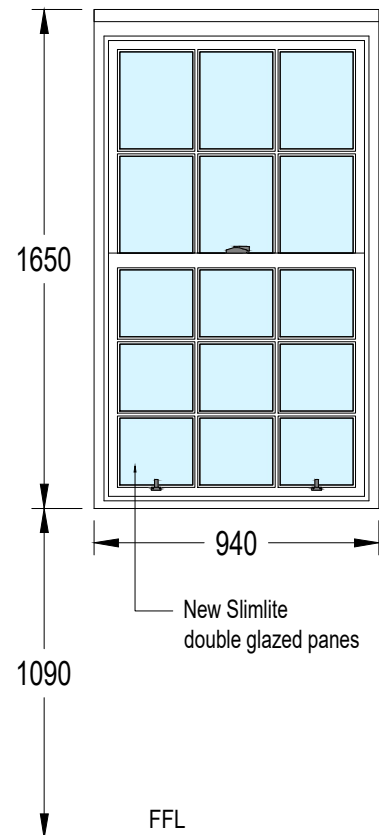
W6 - Bedroom 2 window - Internal View



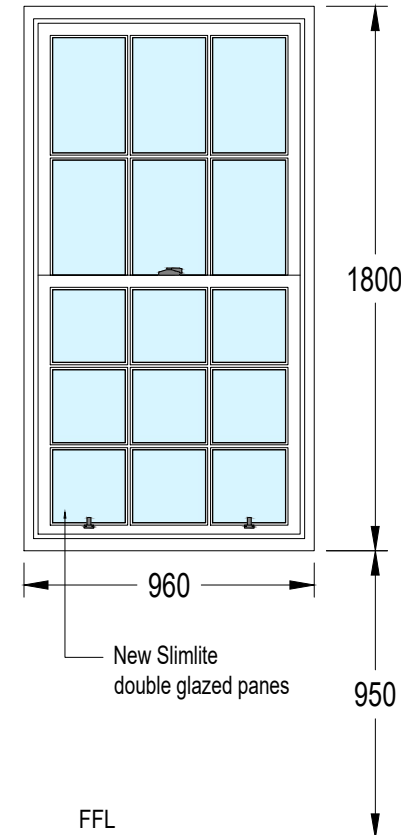
W7, W8 & W9, W10 & W11, W12 - Living room windows - Internal View



W13 - Living room window - Internal View



W14, W15 - Hallway windows - Internal View



Rev.	Description	Issue by	Date

SUMMERS INMAN
CONSTRUCTION & PROPERTY CONSULTANTS

Suite 4, Pavilion 1, The Quadrant,
14 New Mart Road, Edinburgh, EH14 1RL
0131 455 9700
edinburgh@summers-inman.co.uk
www.summers-inman.co.uk

Drawing Status

Statutory Consent

Client
The City of Edinburgh Council
Project
Windows Refurbishment, 41 2F Haddington Place, Edinburgh
Title
Proposed Windows (Internal View)

Date NOV 23 Scale at A3 1:25 Drawn MJ Checked IM

EH22040 - SUM - XX - XX - DR - B - 0105 -							
Project	Originator	Zone	Level	Type	Role	Number	Rev.